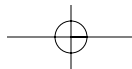
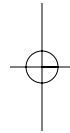
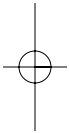


C-more™ **Programming Software** **Installation Guide** **EA-PGMSW-SIG**





C-more[®] Programming Software Installation Guide

⚡ WARNING ⚡

Thank you for purchasing automation equipment from Automationdirect.comTM, doing business as, AutomationDirect. We want your new automation equipment to operate safely. Anyone who installs or uses this equipment should read this publication (and any other relevant publications) before installing or operating the equipment.

To minimize the risk of potential safety problems, you should follow all applicable local and national codes that regulate the installation and operation of your equipment. These codes vary from area to area and usually change with time. It is your responsibility to determine which codes should be followed, and to verify that the equipment, installation, and operation is in compliance with the latest revision of these codes.

At a minimum, you should follow all applicable sections of the National Fire Code, National Electrical Code, and the codes of the National Electrical Manufacturer's Association (NEMA). There may be local regulatory or government offices that can also help determine which codes and standards are necessary for safe installation and operation.

Equipment damage or serious injury to personnel can result from the failure to follow all applicable codes and standards. We do not guarantee the products described in this publication are suitable for your particular application, nor do we assume any responsibility for your product design, installation, or operation.

Our products are not fault-tolerant and are not designed, manufactured or intended for use or resale as on-line control equipment in hazardous environments requiring fail-safe performance, such as in the operation of nuclear facilities, aircraft navigation or communication systems, air traffic control, direct life support machines, or weapons systems, in which the failure of the product could lead directly to death, personal injury, or severe physical or environmental damage ("High Risk Activities"). AutomationDirect specifically disclaims any expressed or implied warranty of fitness for High Risk Activities.

For additional warranty and safety information, see the Terms and Conditions section of our catalog. If you have any questions concerning the installation or operation of this equipment, or if you need additional information, please call us at 770-844-4200.

This publication is based on information that was available at the time it was printed. At AutomationDirect we constantly strive to improve our products and services, so we reserve the right to make changes to the products and/or publications at any time without notice and without any obligation. This publication may also discuss features that may not be available in certain revisions of the product.

Trademarks

This publication may contain references to products produced and/or offered by other companies. The product and company names may be trademarked and are the sole property of their respective owners. AutomationDirect disclaims any proprietary interest in the marks and names of others.

Copyright 2005, Automationdirect.comTM Incorporated, All Rights Reserved

No part of this manual shall be copied, reproduced, or transmitted in any way without the prior, written consent of Automationdirect.comTM Incorporated. AutomationDirect retains the exclusive rights to all information included in this document.

C-more[®] Programming Software Installation Guide

⚡ AVERTISSEMENT ⚡

Nous vous remercions d'avoir acheté l'équipement d'automatisation de Automationdirect.comMC. Nous tenons à ce que votre nouvel équipement d'automatisation fonctionne en toute sécurité. Toute personne qui installe ou utilise cet équipement doit lire la présente publication (et toutes les autres publications pertinentes) avant de l'installer ou de l'utiliser.

Afin de réduire au minimum le risque d'éventuels problèmes de sécurité, vous devez respecter tous les codes locaux et nationaux applicables régissant l'installation et le fonctionnement de votre équipement. Ces codes diffèrent d'une région à l'autre et, habituellement, évoluent au fil du temps. Il vous incombe de déterminer les codes à respecter et de vous assurer que l'équipement, l'installation et le fonctionnement sont conformes aux exigences de la version la plus récente de ces codes.

Vous devez, à tout le moins, respecter toutes les sections applicables du Code national de prévention des incendies, du Code national de l'électricité et des codes de la National Electrical Manufacturer's Association (NEMA). Des organismes de réglementation ou des services gouvernementaux locaux peuvent également vous aider à déterminer les codes ainsi que les normes à respecter pour assurer une installation et un fonctionnement sûrs.

L'omission de respecter la totalité des codes et des normes applicables peut entraîner des dommages à l'équipement ou causer de graves blessures au personnel. Nous ne garantissons pas que les produits décrits dans cette publication conviennent à votre application particulière et nous n'assumons aucune responsabilité à l'égard de la conception, de l'installation ou du fonctionnement de votre produit.

Nos produits ne sont pas insensibles aux défaillances et ne sont ni conçus ni fabriqués pour l'utilisation ou la revente en tant qu'équipement de commande en ligne dans des environnements dangereux nécessitant une sécurité absolue, par exemple, l'exploitation d'installations nucléaires, les systèmes de navigation aérienne ou de communication, le contrôle de la circulation aérienne, les équipements de survie ou les systèmes d'armes, pour lesquels la défaillance du produit peut provoquer la mort, des blessures corporelles ou de graves dommages matériels ou environnementaux («activités à risque élevé»). La société Automationdirect.comMC nie toute garantie expresse ou implicite d'aptitude à l'emploi en ce qui a trait aux activités à risque élevé.

Pour des renseignements additionnels touchant la garantie et la sécurité, veuillez consulter la section Modalités et conditions de notre documentation. Si vous avez des questions au sujet de l'installation ou du fonctionnement de cet équipement, ou encore si vous avez besoin de renseignements supplémentaires, n'hésitez pas à nous téléphoner au 770-844-4200.

Cette publication s'appuie sur l'information qui était disponible au moment de l'impression. À la société Automationdirect.com, nous nous efforçons constamment d'améliorer nos produits et services. C'est pourquoi nous nous réservons le droit d'apporter des modifications aux produits ou aux publications en tout temps, sans préavis ni quelque obligation que ce soit. La présente publication peut aussi porter sur des caractéristiques susceptibles de ne pas être offertes dans certaines versions révisées du produit.

Marques de commerce

La présente publication peut contenir des références à des produits fabriqués ou offerts par d'autres entreprises. Les désignations des produits et des entreprises peuvent être des marques de commerce et appartiennent exclusivement à leurs propriétaires respectifs. Automationdirect.comMC nie tout intérêt dans les autres marques et désignations.

Copyright 2005, Automationdirect.com[™] Incorporated, Tous droits réservés

Nulle partie de ce manuel ne doit être copiée, reproduite ou transmise de quelque façon que ce soit sans le consentement préalable écrit de la société Automationdirect.com[™] Incorporated. Automationdirect.com[™] conserve les droits exclusifs à l'égard de tous les renseignements contenus dans le présent document.

C-more[®] Programming Software Installation Guide

⚡ ADVERTENCIA ⚡

Gracias por comprar equipo de automatización de Automationdirect.comTM. Deseamos que su nuevo equipo de automatización opere de manera segura. Cualquier persona que instale o use este equipo debe leer esta publicación (y cualquier otra publicación pertinente) antes de instalar u operar el equipo.

Para reducir al mínimo el riesgo debido a problemas de seguridad, debe seguir todos los códigos de seguridad locales o nacionales aplicables que regulan la instalación y operación de su equipo. Estos códigos varían de área en área y usualmente cambian con el tiempo. Es su responsabilidad determinar cuales códigos deben ser seguidos y verificar que el equipo, instalación y operación estén en cumplimiento con la revisión mas reciente de estos códigos.

Como mínimo, debe seguir las secciones aplicables del Código Nacional de Incendio, Código Nacional Eléctrico, y los códigos de (NEMA) la Asociación Nacional de Fabricantes Eléctricos de E.E.U.U.. Puede haber oficinas de normas locales o del gobierno que pueden ayudar a determinar cuales códigos y normas son necesarios para una instalación e operación segura.

Si no se siguen todos los códigos y normas aplicables, puede resultar en daños al equipo o lesiones serias a personas. No garantizamos los productos descritos en esta publicación para ser adecuados para su aplicación en particular, ni asumimos ninguna responsabilidad por el diseño de su producto, la instalación u operación.

Nuestros productos no son tolerantes a fallas y no han sido diseñados, fabricados o intencionados para uso o reventa como equipo de control en línea en ambientes peligrosos que requieren una ejecución sin fallas, tales como operación en instalaciones nucleares, sistemas de navegación aérea, o de comunicación, control de trafico aéreo, máquinas de soporte de vida o sistemas de armamentos en las cuales la falla del producto puede resultar directamente en muerte, heridas personales, o daños físicos o ambientales severos ("Actividades de Alto Riesgo"). Automationdirect.comTM específicamente rechaza cualquier garantía ya sea expresada o implicada para actividades de alto riesgo.

Para información adicional acerca de garantía e información de seguridad, vea la sección de Términos y Condiciones de nuestro catalogo. Si tiene alguna pregunta sobre instalación u operación de este equipo, o si necesita información adicional, por favor llámenos al número 770-844-4200 en Estados Unidos.

Esta publicación está basada en la información disponible al momento de impresión. En Automationdirect.comTM nos esforzamos constantemente para mejorar nuestros productos y servicios, así que nos reservamos el derecho de hacer cambios al producto y/o a las publicaciones en cualquier momento sin notificación y sin ninguna obligación. Esta publicación también puede discutir características que no estén disponibles en ciertas revisiones del producto.

Marcas Registradas

Esta publicación puede contener referencias a productos producidos y/u ofrecidos por otras compañías. Los nombres de las compañías y productos pueden tener marcas registradas y son propiedad única de sus respectivos dueños. Automationdirect.comTM, renuncia cualquier interés propietario en las marcas y nombres de otros.

**Propiedad Literaria 2005, Automationdirect.comTM Incorporated
Todos los derechos reservados**

No se permite copiar, reproducir, o transmitir de ninguna forma ninguna parte de este manual sin previo consentimiento por escrito de Automationdirect.comTM Incorporated. Automationdirect.comTM retiene los derechos exclusivos a toda la información incluida en este documento. Los usuarios de este equipo pueden copiar este documento solamente para instalar, configurar y mantener el equipo correspondiente. Puede ser usado también para propósitos de educación en institutos de enseñanza.

C-more[®] Programming Software Installation Guide

AUTOMATIONDIRECT.COM END USER LICENSE AGREEMENT FOR C-more PROGRAMMING SOFTWARE

IMPORTANT: Before using this software you should carefully read this agreement.

The enclosed C-more Programming computer software programs (the "Software") are the property of Automationdirect.com, inc. or its suppliers. Before installing, copying, downloading, accessing or otherwise using this package, carefully read this Agreement. If you do not accept the terms and conditions of this Agreement, you should return the enclosed Software and any accompanying items (including any manuals, release notes, binders, etc.), unopened, to Automationdirect.com for a full refund.

1. LICENSE: Subject to the terms and conditions of this Agreement, when you install this software, Automationdirect.com grants you and you accept a non-exclusive license to use the following Software which you obtain from Automationdirect.com. The particular Software you have acquired and the type of license is specified in your purchase order as part of the part number for the item. The following applies to each type of Software product and license:

C-more Programming Software User License

If you have acquired a license for the C-more Programming Software you may use one copy of the C-more Programming Software product on any single computer, provided the Software is in use on only one computer at any time. If you have multiple licenses for the C-more Programming Software, then you may use the product on a number of computers equal to the number of licenses you have obtained for the product. The C-more Programming Software is deemed "in use" on a computer when it is loaded into the temporary memory (i.e., RAM) or installed into the permanent memory (i.e., hard disk, CD-ROM or other storage device) of that computer, except that a copy may be installed on a network server for the sole purpose of distribution to other computers for which you have obtained a license for the product and that are not currently "in use".

C-more[®] Programming Software Installation Guide

You must have a reasonable mechanism or process in place to ensure that the number of computers using the C-more Programming Software concurrently does not exceed the number of licenses, and obtain any required additional licenses from Automationdirect.com. However, if the C-more Programming Software is permanently installed on the hard disk or other storage device of a computer (other than a network server) and one person uses that computer more than 80% of the time it is in use, then that person may also use the C-more Programming Software on a single portable computer or a single computer at home.

2. COPYRIGHT: The Software is owned by Automationdirect.com or its suppliers and is protected by United States copyright laws and international treaty provisions. You shall not remove or alter, or permit any person to remove or alter, any of the copyright or other notices of Automationdirect.com or its suppliers on, stated in or affixed to the Software or any of the documentation, or on any diskettes, covers or other packaging containing Software or the documentation.

3. RESTRICTIONS: You acknowledge that the Software and the related documentation delivered to you are and shall remain the property of Automationdirect.com or its suppliers. You may not, and you may not permit others to (a) reverse engineer, decompile, decode, decrypt, disassemble, or in any way derive source code from, the Software; (b) modify, distribute, or create derivative works of the Software; (c) copy (other than one back-up copy), distribute, publicly display, transmit, sell, rent, lease or otherwise exploit the Software.

4. LIMITED WARRANTY: Automationdirect.com warrants that the Software will perform substantially in accordance with the written materials accompanying the Software for a period of ninety (90) days from the date of receipt. EXCEPT AS PROVIDED ABOVE, AUTOMATIONDIRECT.COM MAKES NO REPRESENTATIONS OR WARRANTIES OF ANY KIND, NATURE OR DESCRIPTION, EXPRESS OR IMPLIED, WITH RESPECT TO THE SOFTWARE OR ANY RELATED WRITTEN MATERIALS, INCLUDING, WITHOUT LIMITATION, ANY WARRANTY OF MERCHANTABILITY OR FITNESS FOR ANY PARTICULAR PURPOSE,

C-more[®] Programming Software Installation Guide

AND AUTOMATIONDIRECT.COM HEREBY DISCLAIMS THE SAME. This Limited Warranty is void if failure of the Software results from accident, abuse, or misapplication or failure to use the Software in accordance with its documentation.

5. CUSTOMER REMEDIES: Automationdirect.com's entire liability and your exclusive remedy shall be, at Automationdirect.com's option, either refund of the price paid for the defective Software, or repair or replacement of the defective Software, in each case upon return to Automationdirect.com during the warranty period. You must return the defective Software product to Automationdirect.com with a copy of your purchase receipt. Any replacement Software will be warranted for the remainder of the original warranty period or thirty (30) days, whichever is longer.

6. LIMITATION ON LIABILITY: In no event shall Automationdirect.com be liable, whether in contract or in tort, or under any other legal theory (including, without limitation, negligence), for any indirect, special, consequential or incidental damages arising out of or in connection with the Software or any documentation, including, without limitation, lost profits or revenues, loss of data or business information, costs for recreating lost data, business interruption, costs for replacement programs, or any similar damages, or for any claim made against you by any other party, even if Automationdirect.com has been advised of the possibility of such claim. In no event will the liability of Automationdirect.com for any Software exceed the price paid by you for the defective Software product.

7. NO TRANSFER: You may not rent or lease the Software, but you may transfer your rights under each copy of the Software products on a permanent basis with the prior written consent of Automationdirect.com, provided that you transfer this Agreement, the Software, and all accompanying written materials and retain no copies on any computer or other form of media. Any transfer of the Software must include the most recent update and all prior released versions.

C-more[®] Programming Software Installation Guide

Any transfer requires that you provide written notification to Automationdirect.com prior to the transfer, the prior written consent of Automationdirect.com, and the recipient's agreement in writing to abide by the terms contained in this Agreement. Automationdirect.com reserves the right to reject the transfer if it is not in the best interest of Automationdirect.com, its customers or authorized resellers.

8. TERM AND TERMINATION: This Agreement and the licenses granted in this Agreement are effective until terminated. You may terminate this Agreement at any time by notifying Automationdirect.com, returning the Software and related documentation, and destroying all copies. This Agreement will also terminate upon your failure to comply with any of its terms, in which event you must return the Software and the written materials to Automationdirect.com and destroy all copies.

9. U.S.GOVERNMENT RESTRICTED RIGHTS: The Software and accompanying documentation are "commercial computer software" and "commercial computer software documentation," respectively, with United States Government rights governed by DFAR Section 227.7202 and FAR Section 12.212, as applicable. Any use, modification, reproduction, release, performance, display or disclosure of the Software and accompanying documentation by the United States Government shall be governed solely by the terms of this Agreement and shall be prohibited except to the extent expressly permitted by the terms of this Agreement.

10. MISCELLANEOUS: No failure or delay to exercise any right or remedy under this Agreement shall operate as a waiver, and a single or partial exercise of any right or remedy will not preclude the further exercise of such right or remedy or any other right or remedy. This Agreement supercedes any other oral or written agreement between you and Automationdirect.com. This Agreement shall be construed and enforced in accordance with the laws of the State of Georgia, without regard to its rules regarding conflicts of law. AutomationDirect.com - 3505 Hutchinson Road - Cumming GA, 30040 - U.S.A

C-more[™] Programming Software Installation Guide

Document History



Programming Software Installation Guide EA-PGMSW-SIG

Please include the manual number and the manual issue, both which are shown below, when communicating with Technical Support regarding this publication.

Manual Number: EA-PGMSW-M
Issue Number: First Edition, Rev. A
Issue Date: December 2005

Publication History		
Issue	Date	Description of Changes
First Edition	October 2005	Original
Rev. A	December 2005	Updated license agreement and screen captures.

Programming Software Installation Guide

Table of Contents

Introduction	1
Programming Software Installation	3
Launch C-more Programming Software	12
Uninstalling the Programming Software	13

C-more Programming Software Installation Guide

Notes

C-more Programming Software Installation Guide

Introduction

Conventions Used



Whenever you see the "exclamation mark" icon in the left-hand margin, the paragraph to its immediate right will be a warning. These are very important because the information could prevent injury, loss of property, or even death (in extreme cases). The word **WARNING:** will mark the beginning of the text.



Whenever you see the "notepad" icon in the left-hand margin, the paragraph to its immediate right will be a special note. The word **NOTE:** will mark the beginning of the text.



Whenever you see the "light bulb" icon in the left-hand margin, the paragraph to its immediate right will give you a special tip. The word **TIP:** will mark the beginning of the text.

System Requirements

Following are the minimum system requirements for running C-more Programming Software on a PC:

- Personal Computer with a 333MHz or higher processor (CPU) clock speed recommended; Intel Pentium/Celeron family or AMD K6/Athlon/Duron family, or compatible processor recommended.
- Keyboard and Mouse or compatible pointing device.
- SVGA 800x600 pixels resolution (1024x768 pixels resolution recommended).
- 300MB free hard-disk space.
- 128MB free Ram (512MB recommended).

C-more Programming Software Installation Guide

- CD-ROM or DVD drive for installing software from the CD.
- USB port or Ethernet 10/100 Mbps port for project transfer to Touch Panel(Ethernet port not available on R-models).
- Operating System - Windows® XP Home / Professional Edition or Windows® 2000 with Service Pack 4.



TIP: Any size monitor will work, but larger monitors enhance the display capabilities of the C-more Programming Software.

We highly recommend that you use power surge protection for the computer running C-more Programming Software. A quality surge protector will protect your computer from most surges and spikes; however, an uninterruptible power supply (UPS) will offer the highest level of protection. A UPS provides complete isolation between the AC power source and the computer and has battery backup for blackout and brownout conditions.

If you further need assistance during the software installation, call the AutomationDirect Technical Support team at 770-844-4200.

C-more Programming Software Installation Guide

Programming Software Installation



NOTE: Before starting, you must be logged on with administrator privileges or as a member of the administrators group to Install the C-more software. If you do not have administrator privileges, please check with your network administrator.



When upgrading from the Demo Version to the Full Version, it is not necessary to uninstall the Demo version before starting the Installation. The C-more Installation Software supports the ability to upgrade from Demo Version to Products Key Version. You must first purchase the Software to receive a Key Code.

Step 1: Load the CD

Insert the C-more Software CD into the CD drive.

Step 2: Starting the Installation

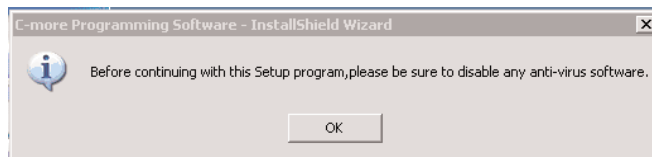
The CD will begin its auto-install feature. If the auto install is not on, click on **Start** (bottom left of your monitor screen), and select **Run**. In the screen that appears, type "D: setup" if your CD ROM drive is "D." (Usually, your floppy disks are drives "A" and "B", your hard drive is "C" and your CD ROM is "D".) If you are not sure which one is your CD ROM drive, click on the word **Browse** on the screen that came up when you clicked on **Run**. Then, click on the down arrow in the field labeled **Look in**. A drop-down menu will appear when you click on this area. Select the CD icon from the drop-down menu. Then, click on the word **Setup** and follow the directions on the screen.



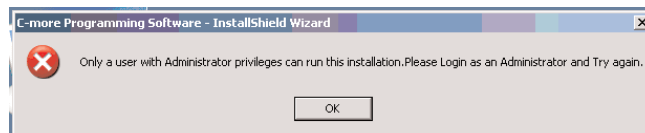
C-more Programming Software Installation Guide

Step 3. Deactivate Your Anti-Virus Software

The installation issues a reminder to temporarily deactivate your anti-virus software during the installation. If it is deactivated, click **OK**.



NOTE: an error message is displayed if the user login account you selected does not have administrative rights.



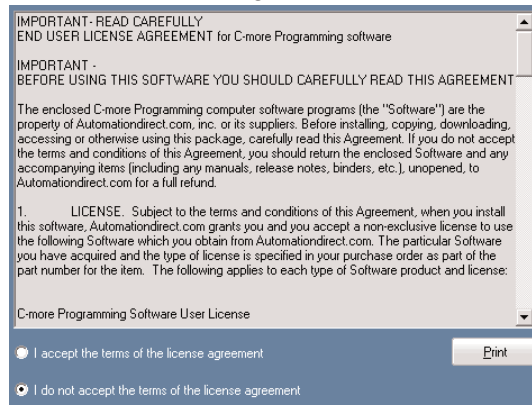
You must be logged on with administrator privileges or be a member of the administrators group to install the C-more software. If you do not have administrator privileges, check with your network administrator. When you click **OK** the installation will terminate.

Restart the installation after you have logged in with administrator privileges.

C-more® Programming Software Installation Guide

Step 4: License Agreement

Carefully read the software license agreement. If you agree to the terms and conditions of this agreement, select the **I accept the terms of the license agreement** and Next buttons.



IMPORTANT - READ CAREFULLY
END USER LICENSE AGREEMENT for C-more Programming software

IMPORTANT -
BEFORE USING THIS SOFTWARE YOU SHOULD CAREFULLY READ THIS AGREEMENT

The enclosed C-more Programming computer software programs (the "Software") are the property of Automationdirect.com, inc. or its suppliers. Before installing, copying, downloading, accessing or otherwise using this package, carefully read this Agreement. If you do not accept the terms and conditions of this Agreement, you should return the enclosed Software and any accompanying items (including any manuals, release notes, binders, etc.), unopened, to Automationdirect.com for a full refund.

1. LICENSE. Subject to the terms and conditions of this Agreement, when you install this software, Automationdirect.com grants you and you accept a non-exclusive license to use the following Software which you obtain from Automationdirect.com. The particular Software you have acquired and the type of license is specified in your purchase order as part of the part number for the item. The following applies to each type of Software product and license:

C-more Programming Software User License

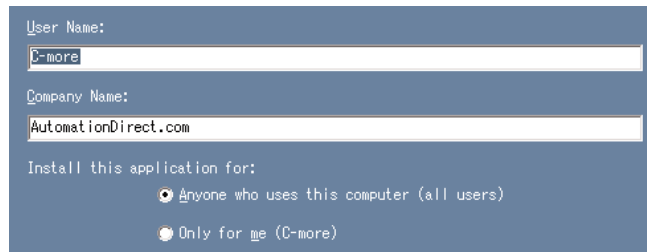
☒ I accept the terms of the license agreement Print

☐ I do not accept the terms of the license agreement

Step 5: Enter Your Name and Company

Enter your name and the name of your company.

Select which users will be able to run the C-more software. If you select **Anyone who uses this computer (all users)**, then all users can use the software. If you want to limit the C-more software use to your account only, then select **Only for me (Your Name)**.



User Name:
C-more

Company Name:
AutomationDirect.com

Install this application for:

☒ Anyone who uses this computer (all users)

☐ Only for me (C-more)

C-more[®] Programming Software Installation Guide

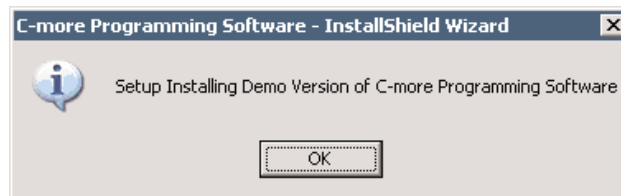
Step 6: Enter Your Product Key Code

Enter your Product Key Code. The label with the Software Key Code is on the software CD case.

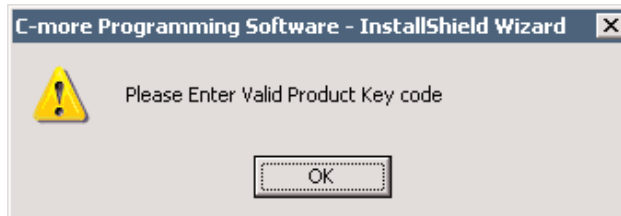
Leave this field empty to install Demo Version of the C-more software. The Demo version is fully functional but it cannot transfer any projects you create to a C-more panel.



NOTE: If you left the key code field empty, the software will notify you that the DEMO will be installed, Select **OK** to continue.



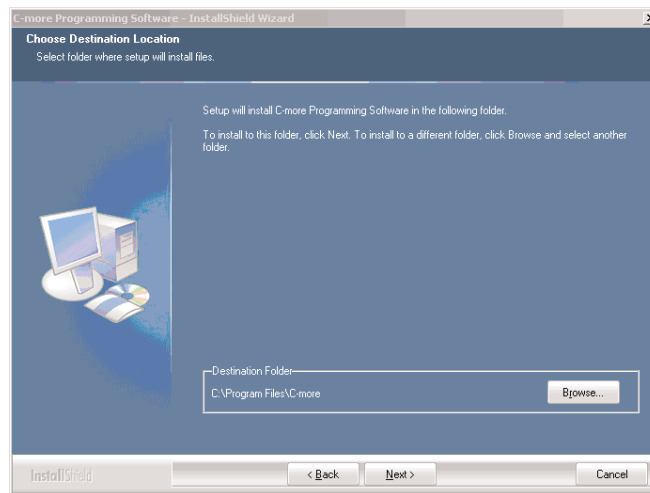
NOTE: If you enter an incorrect key code, the software gives you an error message. Select **OK** and re-enter the key code again.



C-more[®] Programming Software Installation Guide

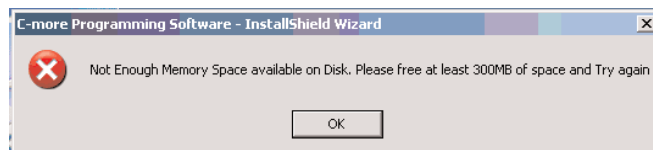
Step 7: Select Installation Directory

This screen lets you choose the folder (directory) where the C-more Programming Software files will be loaded. By default the software loads to the *C:/Program Files/C-more* folder. Most software programs install to the Program Files folder by default.



NOTE: The Disk Space Error Message means that there is not enough memory available on the personal computer. Free up at least 300MB of memory and try again.

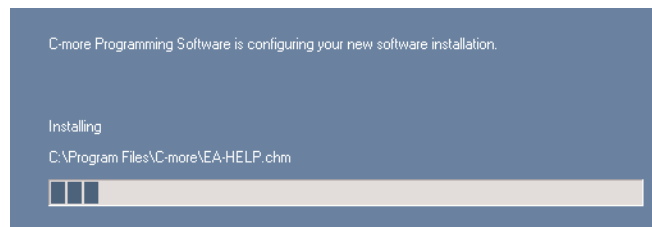
Selecting OK terminates the installation.



C-more[®] Programming Software Installation Guide

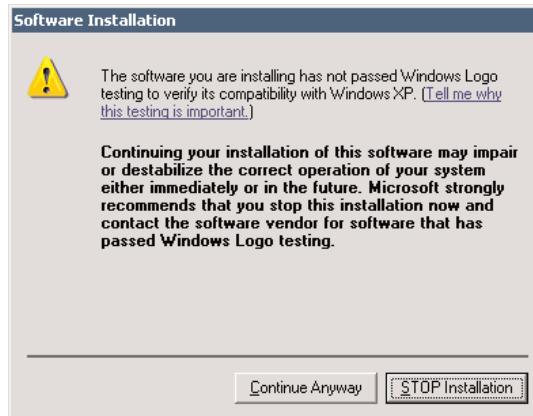
Step 8: Program Installation

The screen provides information on the status of the install. This could take a few minutes based on the speed of your PC. Please wait until the installation is complete before using any other applications.



Step 9: Windows XP Logo Test for C-more USB Driver Message

C-more Installer also installs a USB driver, which is required to connect to the C-more panel USB port. If you are running Windows XP (Pro and Home), this caution dialog appears. Click **Continue Anyway**, and the USB driver will be installed.



C-more® Programming Software Installation Guide



Windows2000 will not display the Windows Logo test screen.

Step 10: Installation of C-more Start Icon

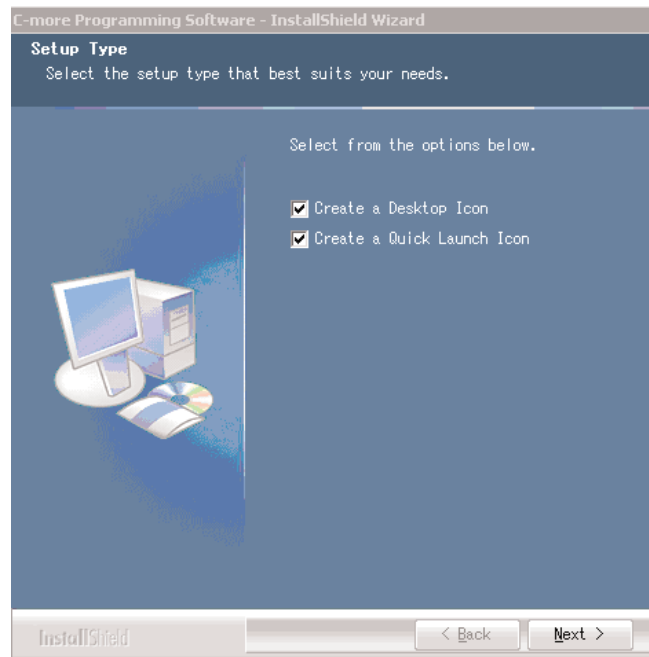


C-more Programming Software will install a Start icon , help file icon and a read me file icon into the Start Menu.

If you would like to have the software place start icons on your desktop and in the quick-launch window, leave the options selected.

If you do not want the icons installed, uncheck the boxes.

Click **Next**.



C-more[®] Programming Software Installation Guide

Step 11: Windows Restart Message

Setup Complete window appears. You can either select restart or restart later check box.

The software should function without a system restart, but restart your PC if you are having problems using the software.



Step 12 : C-more USB Driver Final install

Once you have connected the C-more panel to the PC with the USB cable, Windows will detect the panel and start the Hardware Update Wizard.

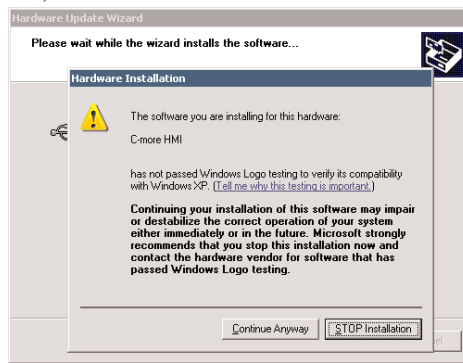
It is recommended the you select **Install the software automatically**. Click **Next**.



C-more[®] Programming Software Installation Guide

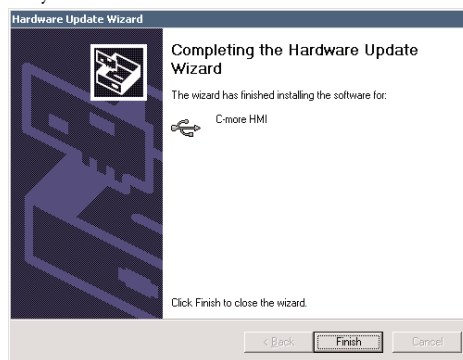
Windows will detect the USB driver and the Windows XP Logo Test Message will display again. Click **Continue Anyway** to allow the USB driver to be installed.

(The C-more software also supports Ethernet connections. If your C-more panel has an ethernet port, you can connect with it.)



The Hardware Update Wizard should verify that the installation is complete. Select **Finish**.

You may now use the software by selecting the C-more Programming Software from the Start menu, or the desktop icon if you installed it.

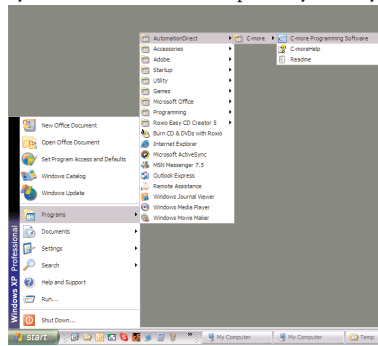


C-more[®] Programming Software Installation Guide

Launch C-more Programming Software

Launch 1: Start Menu

The installation is now complete and you may use the software by selecting “Start > Programs > AutomationDirect > C-more > C-more Programming Software” from the Start menu. If you installed the desktop icon you may use it.

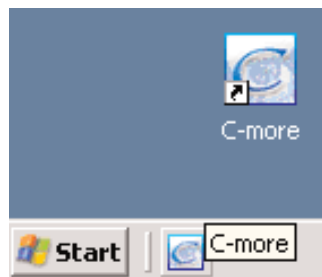


Launch 2: Quick Launch Icon or Desktop Icon

The quickest way to start the software is with the quick-start icon on the Windows task bar or with the desktop icon.



NOTE: These Icons will only exist if you chose to install them in Step 10: Installation of C-more Start Icon.



C-more[®] Programming Software Installation Guide

Uninstalling the Programming Software

Step 1. Check Log-in Account

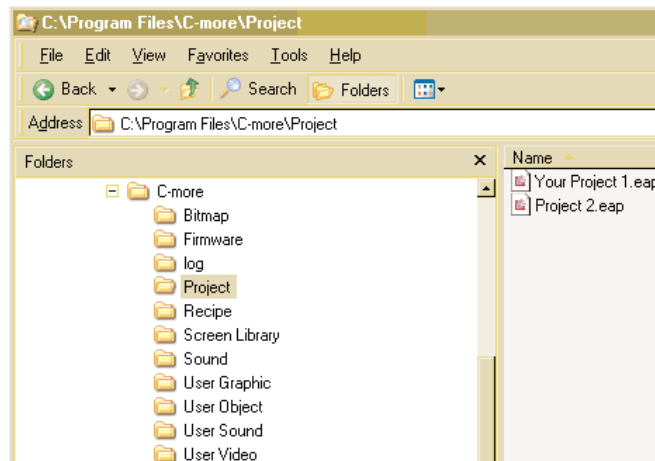
You must be logged on with administrator privileges or be a member of the administrators group to uninstall the C-more software. If you do not have administrator privileges, please check with your network administrator.

Step 2. Backup Data You Want to Save

If you have saved any projects that you created that you would like to keep, then you will need to make backups of these files. Backup your files such as Project and Library files before uninstalling the software.

Step 3. Remove USB Cable

Remove USB cable between PC and C-more before uninstalling software; otherwise the USB driver will still be active.



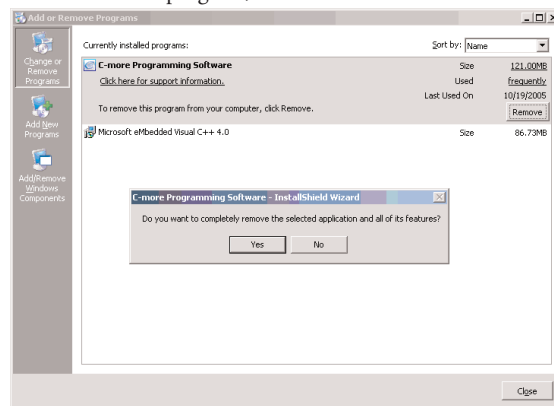
C-more[®] Programming Software Installation Guide

Step 4. Start Uninstall Process

Go to My Computer on your PC Control Panel screen.

Open Add or Remove Programs, and select C-more Programming Software.

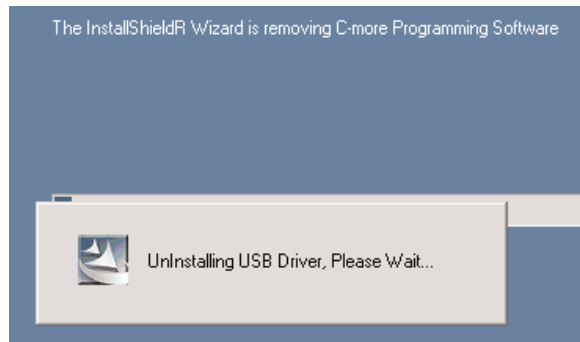
To remove the program, click **Remove**.



This begins the uninstall process. Information on the status of the uninstall is displayed.



NOTE: The USB driver may take awhile to uninstall.



C-more Programming Software Installation Guide

The Uninstall Complete window appears.

Click **Finish**.

The software is now removed from your PC.

