



AutomationDirect

3505 Hutchinson Road, Cumming, GA 30040
tel: 770/889-2858 fax: 770/889-7876
www.automationdirect.com

Installation Guide

C-more Programming Software

In This Manual....

Conventions Used	2
Preparing for Installation	3
Installation of C-more Programming Software.....	4
Launch C-more Programming Software	10
Uninstallation of C-more Programming Software	11

Conventions Used



Whenever you see the “light bulb” icon in the left-hand margin, the paragraph to its immediate right will give you a special tip.



Whenever you see the “notepad” icon in the left-hand margin, the paragraph to its immediate right will be a special note.



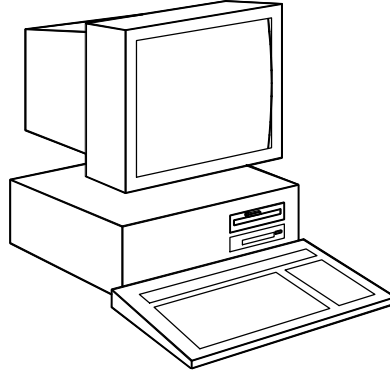
Whenever you see the “exclamation mark” icon in the left-hand margin, the paragraph to its immediate right will be a warning. These are very important because the information could prevent injury, loss of property, or even death (in extreme cases).

Preparing for Installation

Getting to Know C-more Programming Software runs under Windows Operating systems(Windows XP Pro/XP Home/2000 with SP4)

Check Your
PC Hardware
Requirements

Please check the following requirements when choosing your PC configuration.



System Requirements

- Personal Computer with a 333MHz or higher processor(CPU)clock speed recommended; Intel Pentium/Celeron family or AMD K6/Athlon/Duron family, or compatible processor recommended.
- SVGA 800x600 pixels resolution. (1024x768 pixels resolution recommended)
- 300MB free hard-disk space
- 128MB free Ram(512MB recommended)
- CD-ROM or DVD drive for installing software from the CD.
- USB port or Ethernet 10/100 Mbps port for project transfer to Touch Panel



**Ethernet
port not
available on
R-models**



Tip on Monitors:

Any size monitor will work, but larger monitors enhance the display capabilities of C-more Programming Software.

Power Supply

We highly recommend that you use power surge protection for the computer running C-more Programming Software. A quality surge protector will protect your computer from most surges and spikes however, an uninterruptible power supply (UPS) will provide the ultimate protection. A UPS provides complete isolation between the AC power source and the computer and has battery backup for blackout and brownout conditions.

Installation of C-more Programming Software



Step1:

The set of an installer

Step2:

The start of installation

Before Start:

Log-in Account check

Log-in by Administrator account is required for Install,

Upgrade from Demo-Application to Product Key Version:

C-more Installer support upgrade from Demo Version to Products Key Version. It is Uninstallation of a demonstration is unnecessary.

Insert the C-more Programming Software CD into the CD drive.

The CD will begin its auto-install feature. Following Splash Screen display after run Installer.



Step3:
End Other
Windows
tasks

The installation issues a reminder to exit anti-virus software. If it is closed, click **[OK]** to continue.



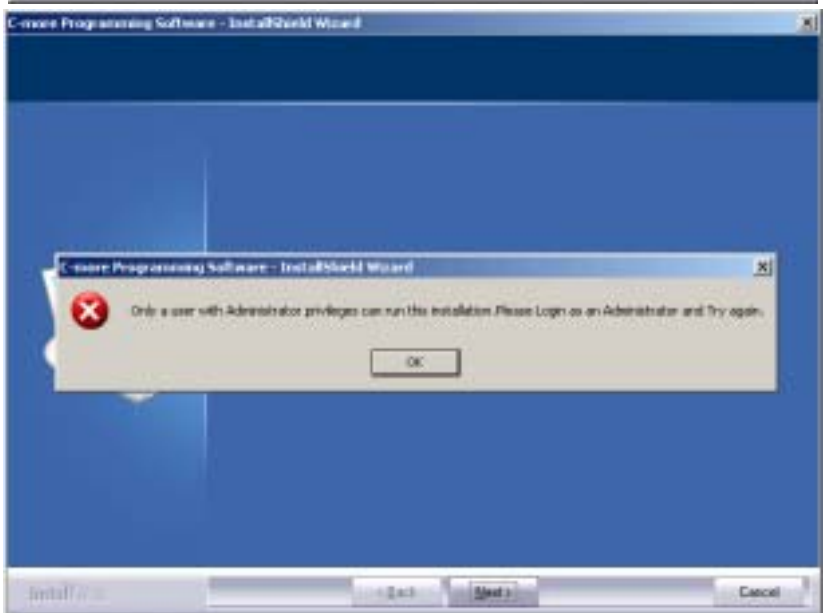
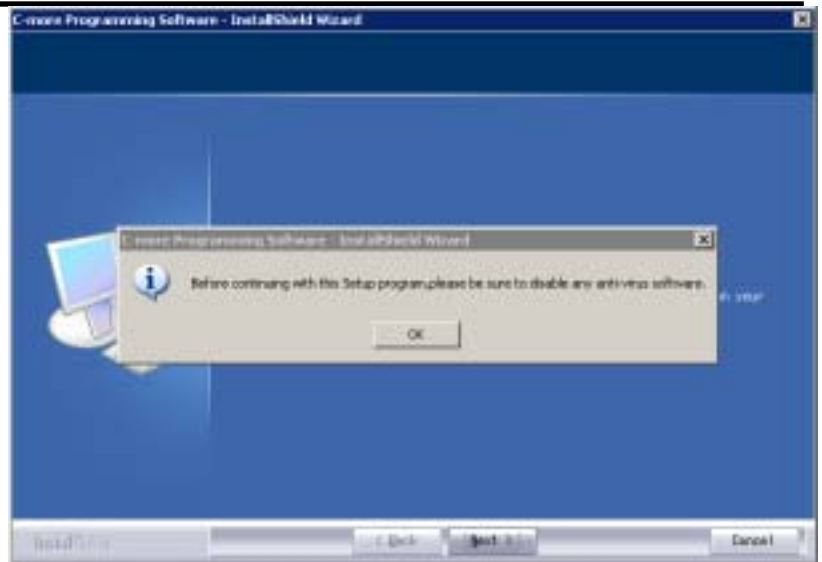
Step4 :
Log-in
Account
check

A right message is displayed when Log-in except Administrator account . After click of **[OK]** Installation will terminate.

Please start installation again after doing Log-in by Administrator account.

Step5:
License
Agreement
t

The next screen displays the software license agreement. If you agree to the terms and conditions, Check on I accept... and click **[Next]** to continue.



Step6:

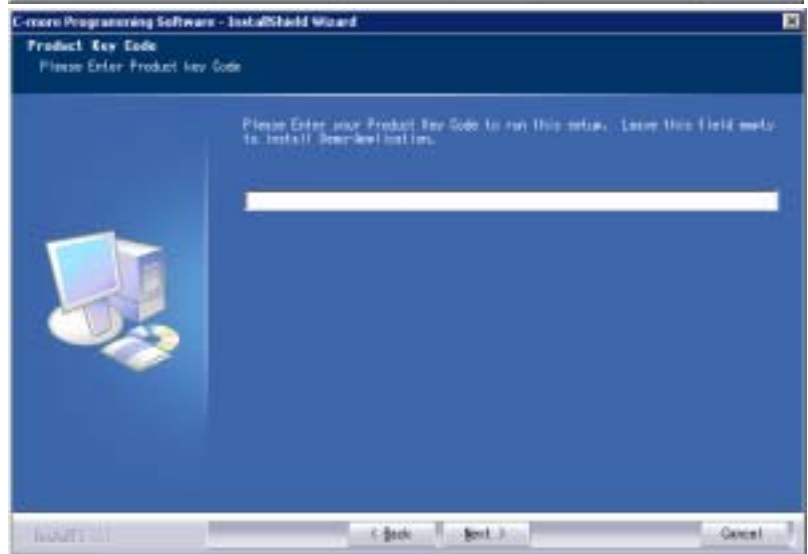
Enter Your Name and Company

The next required information to enter is your name and the name of your company. It is enabling to use C-more by all account registered on PC, It checks "Anyone who uses this computer (all users)." It is using C-more only by the user who logs in now, It checks "Only for me (Your Name)."

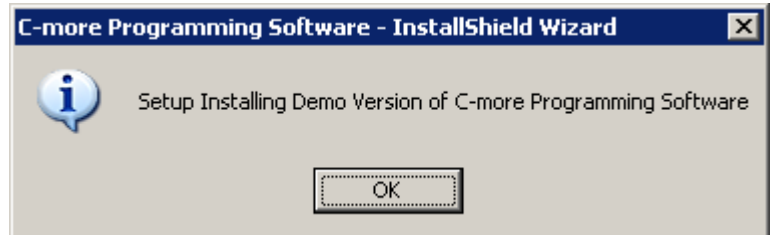
**Step7:**

Enter Your Product Key Code

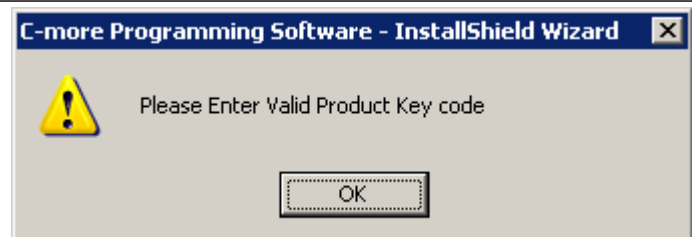
Please Enter your Product Key Code. Leave this field empty to Install Demo-Application.

**Install Demo Message**

It displays, when Next is clicked by field empty.

**Error Message**

Please Enter Valid Product Key Code



Step8:
Select
Installation
Directory

The Destination Location dialog lets you choose the folder (directory) in which the C-more Programming Software files will be loaded.

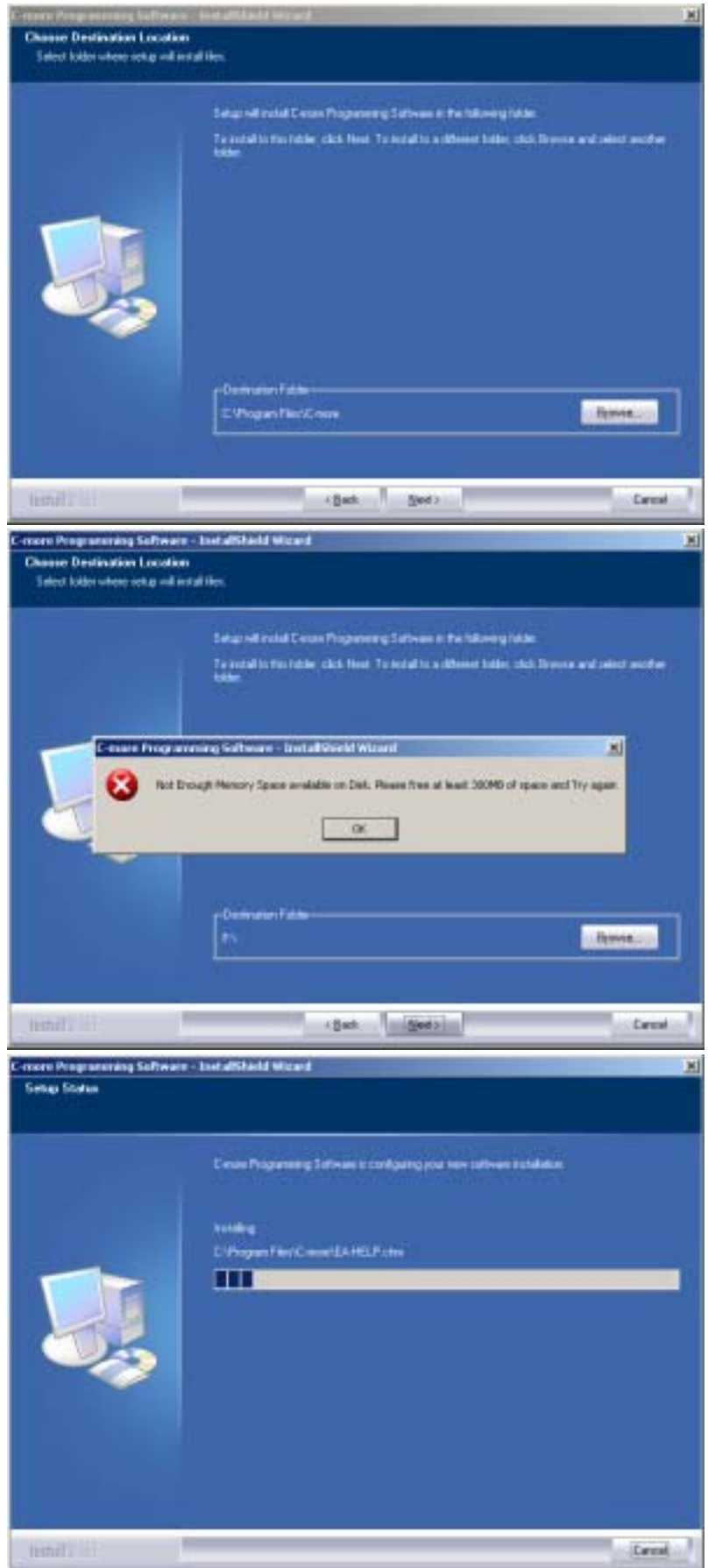


Disk Space Error Message

Not enough Memory Space available on Disk. Please free at least **300MB** of space and Try again. After click of **[OK]** Installation will terminate.

Step9:
Program
Installation

The program can begin its installation. The screen provides information on the status of the install.



**Step10:
C-more USB
Driver of
WindowsXP
Logo Test
Message**



Windows2000
is not display.

C-more Installer also installs a USB driver. In the case of WindowsXP(Pro and Home) caution dialog of Microsoft Windows XP Logo is displayed. Please click "Continue Anyway" and a USB driver install.

Software Installation



The software you are installing has not passed Windows Logo testing to verify its compatibility with Windows XP. ([Tell me why this testing is important.](#))

Continuing your installation of this software may impair or destabilize the correct operation of your system either immediately or in the future. Microsoft strongly recommends that you stop this installation now and contact the software vendor for software that has passed Windows Logo testing.

Continue Anyway

STOP Installation



**Step11:
Registration
of C-more
Start Icon**

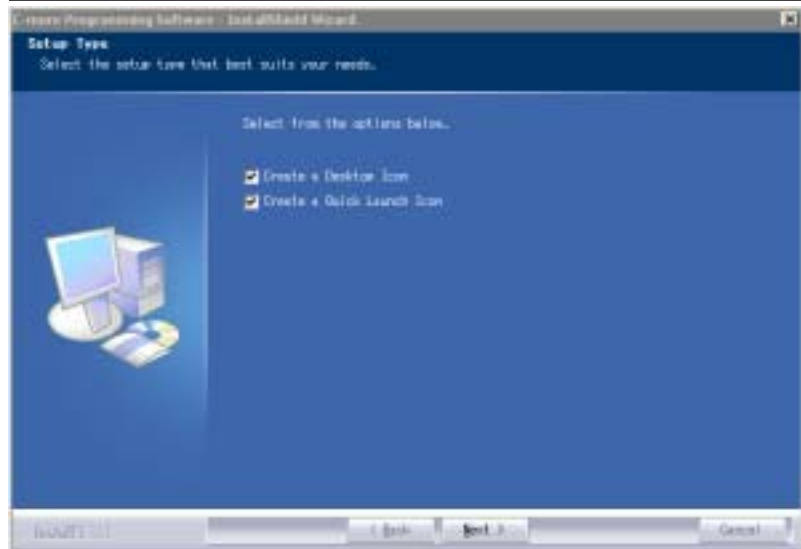
C-more Programming Software resist Start ICON , Help File and ReadMe File to Start Menu.

Otherwise, Start ICON resist to Desktop and Quick Launch.

If unnecessary to them.
please remove a check mark.

**Step12:
Windows
restart
Message.**

After Click "Next" at Step11, the Setup Complete window will appear. You can either check restart or restart later with check box.



**Step13:
C-more USB
Driver Final
install**

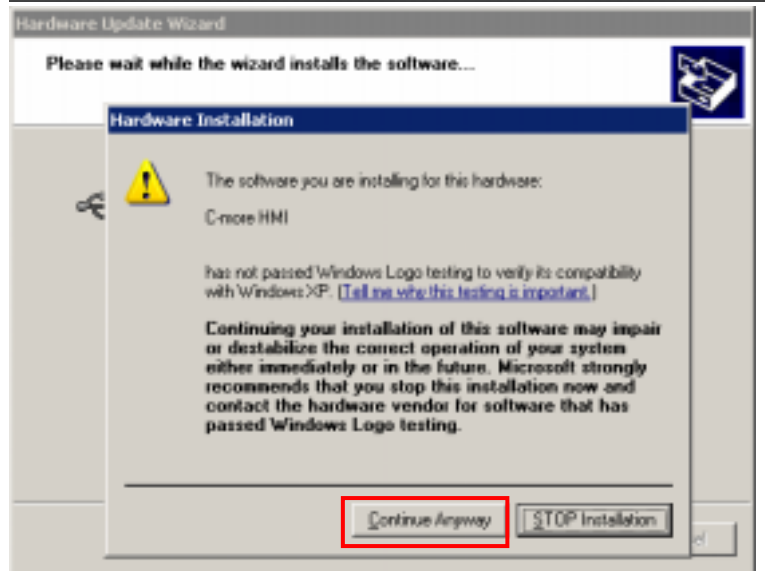
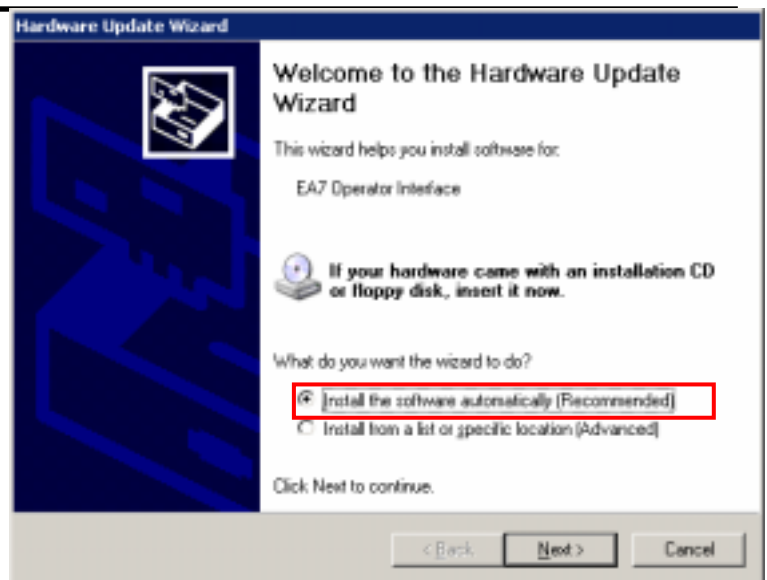
When PC connect to C-more by USB Cable, Hardware Update Wizard display. Please check on "Install the software automatically(Recommended)".



Windows2000
is not display.

WindowsXP Logo Test Message display again, Please click "Continue Anyway" and a USB driver install.

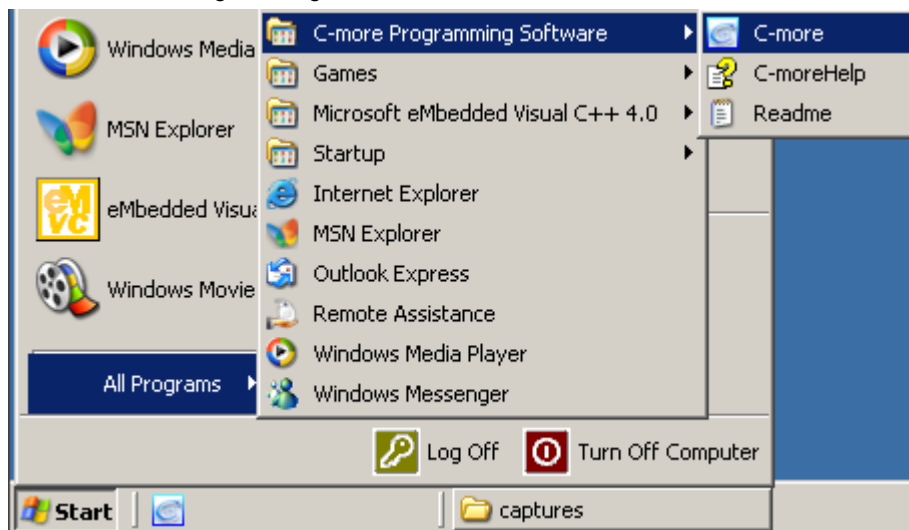
Hardware Update Wizard displays complete window. It shows C-more HMI. Please click a "Finish"



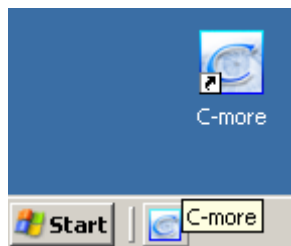
Launch C-more Programming Software

Launch1 : C-more Programming Software can start by the following three methods.

Start Menu Start > C-more Programming Software > C-more



Launch2:
**Quick
Launch
ICON**



Launch2:
**Desktop
ICON**



**It needs
Registratio
n of
C-more
Start Icon
in Step11.**

Uninstallation of C-more Programming Software



Before Start:

Log-in Account check

Log-in by Administrator account is required for Uninstall,



Before Start:

Data Backup

Please Backup your files such as Project, Library files before Uninstall,



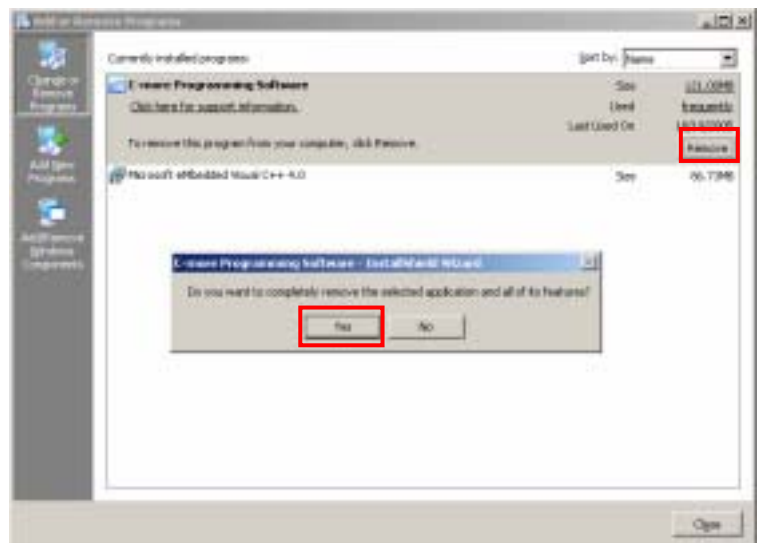
Before Start:

Remove USB Cable

Please Remove USB Cable between PC and C-more before Uninstall,

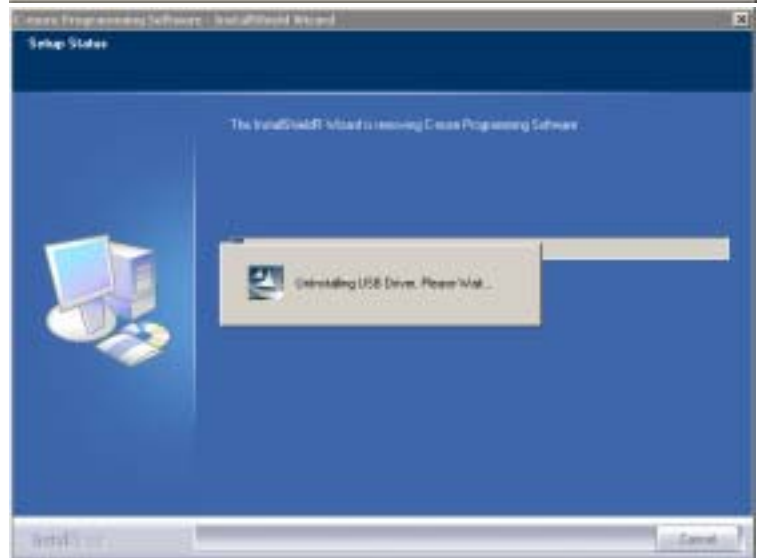
Step1: Start Uninstall

1. Please open to Control panel.
Start>Settings>Control Panel
2. Please runs Add or Remove Programs.
3. Select C-more Programming Software.
4. Click "Remove"
5. Click "Yes"



Uninstall USB Driver. This takes time for a while.

The program can begin its uninstallation. At first, The screen provides information on the status of the install.



The program displays
complete window.
Please click a "Finish"

