



TECHNICAL NOTE

Product: LookoutDirect Version 4.5 Upgrade Software

Part No: PC-LKD-DEVUPG, PC-LKD-RTEUPG

Date Issued: 12/7/01

Revision: Original

Subject: Restoring previous historical data from version 3.8.x for use with converted version 4.5.x file in hypertrends

Products Affected: PC-LKD-DEVUPG, PC-LKD-RTEUPG

Description of Problem: User will not be able to view previous version 3.8.x Citadel historical data in hypertrends.

Solution: Convert previous historical data from version 3.8.x using the "migrate_citadel.exe" (within the downloaded zip file) and place the converted data files in the Citadel Database default path folder for use in version 4.5.x process files with hypertrends.

1. Place version 3.8.x Citadel Database files in an empty folder. Example "C:\OldProject\Database".
2. Place the "migrate_citadel.exe" and "lkmgrtn.dll" from the zip file, in the same empty folder created in Step 1 above. Example "C:\OldProject\Database".
3. Create an additional empty folder. Example "C:\NewProject\Database". This will be the folder where the converted database files will result.
4. Run the "migrate_citadel.exe" as shown below. **Note:** If this is a converted 3.8 process file, an "a" prefix must proceed the process file name (i.e. **a**Process1).

A screenshot of a Windows Command Prompt window. The title bar says "Command Prompt". The command entered is: `C:\Database>migrate_citadel.exe C:\Old Project\database C:\New Project\database \\scada_computer\Process1`. The command is split across two lines.

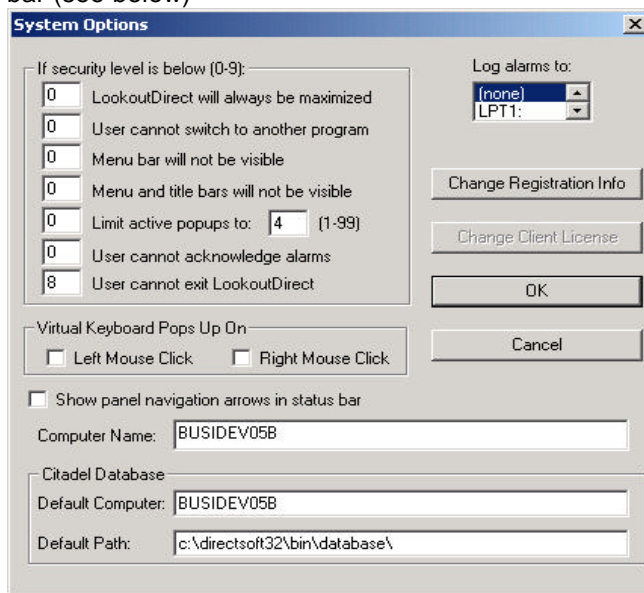
```
C:\Database>migrate_citadel.exe C:\Old Project\database C:\New Project\database
\\scada_computer\Process1
```

5. Be sure that the referenced computer name and process file name (Example: [\\scada_computer1\Process1](#)) matches your computer name and process file name of your version 4.5.x computer and process file.

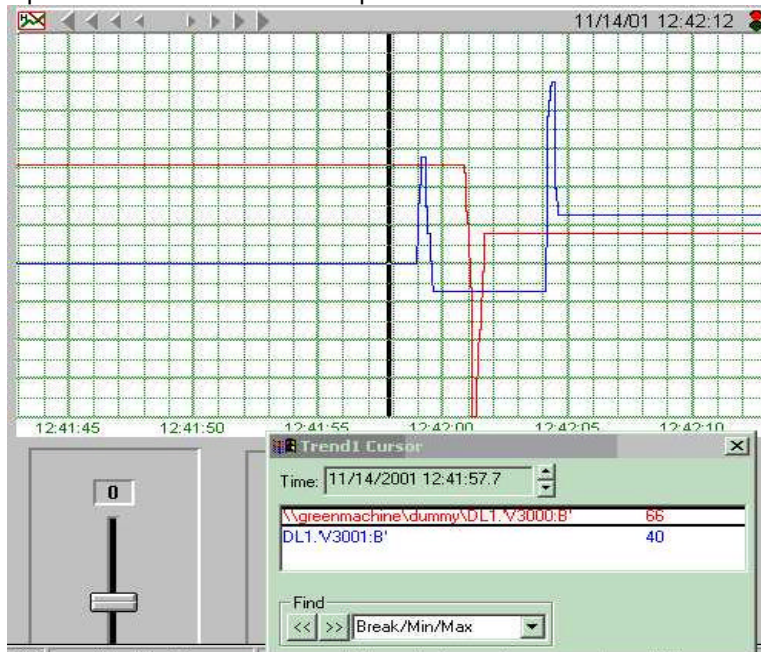


TECHNICAL NOTE

6. Move the resulting converted database files to the Citadel Database default path folder. The location of this folder path can be found by selecting Options>System Options from the LookoutDirect Menu bar (see below)



7. Open converted version 4.5.x process file and confirm historical data is accessible on hypertrends.



Technical Assistance: If you have questions regarding this Product Advisory, please contact us at 770-844-4200 for further assistance.