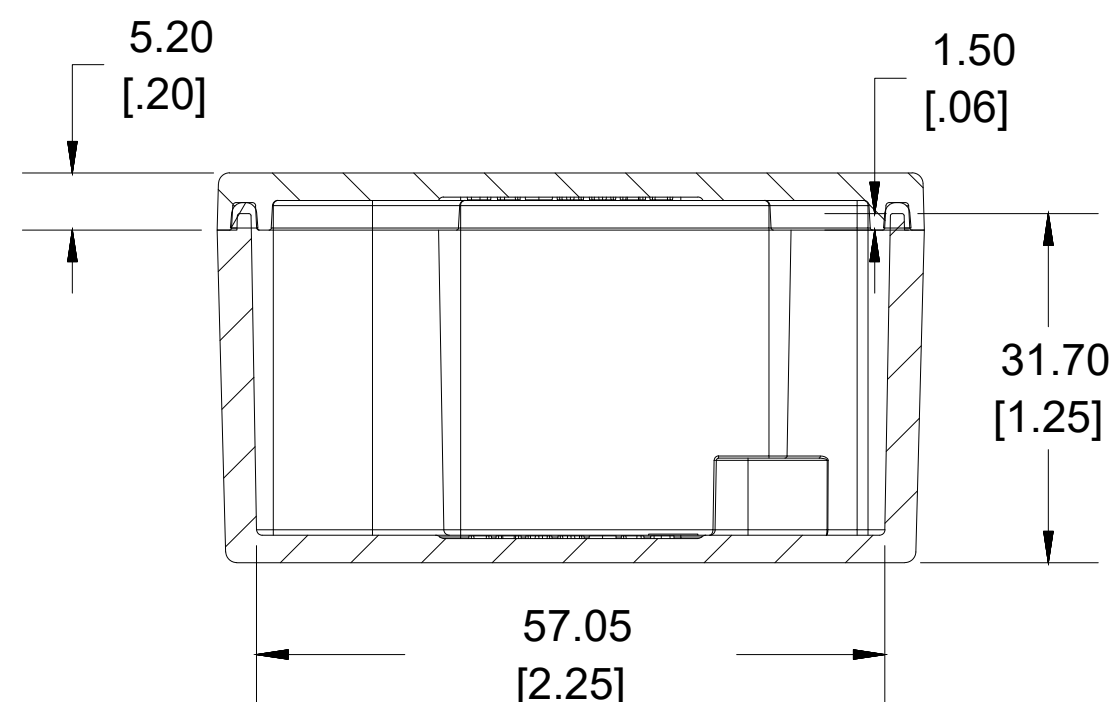
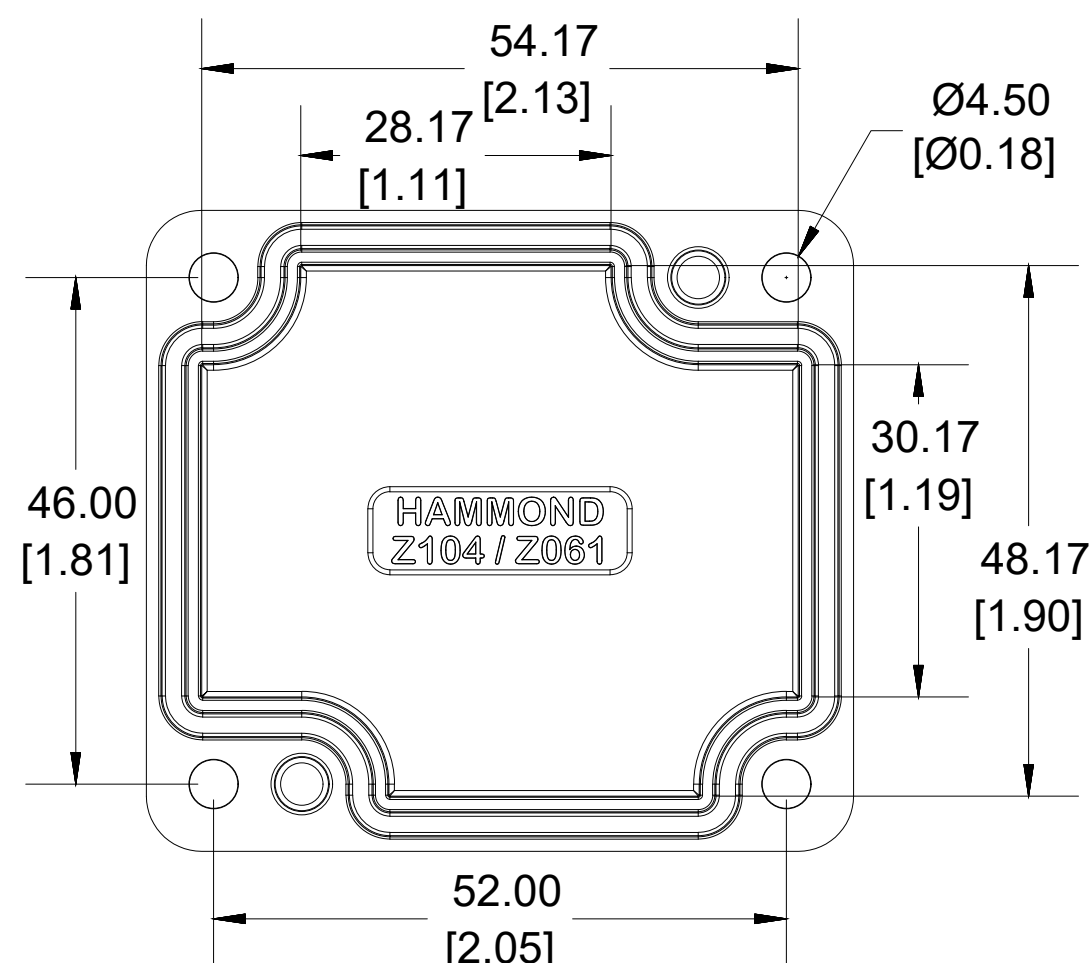


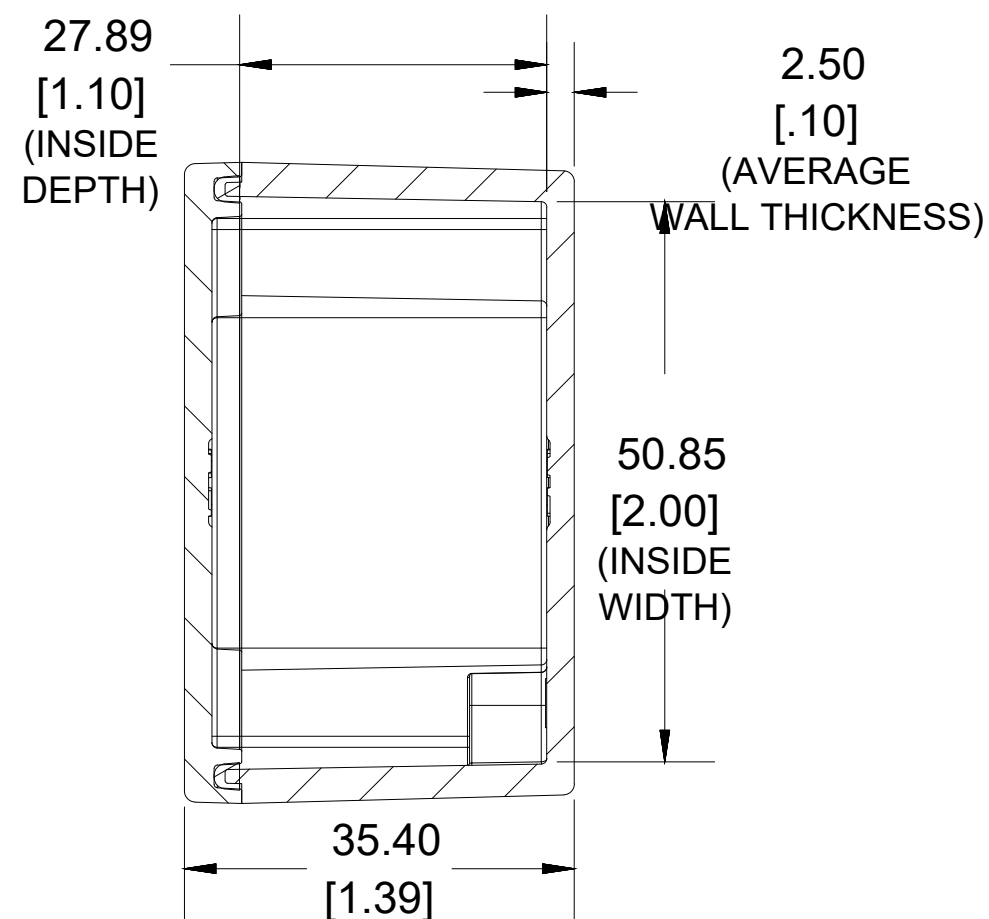
TOP VIEW



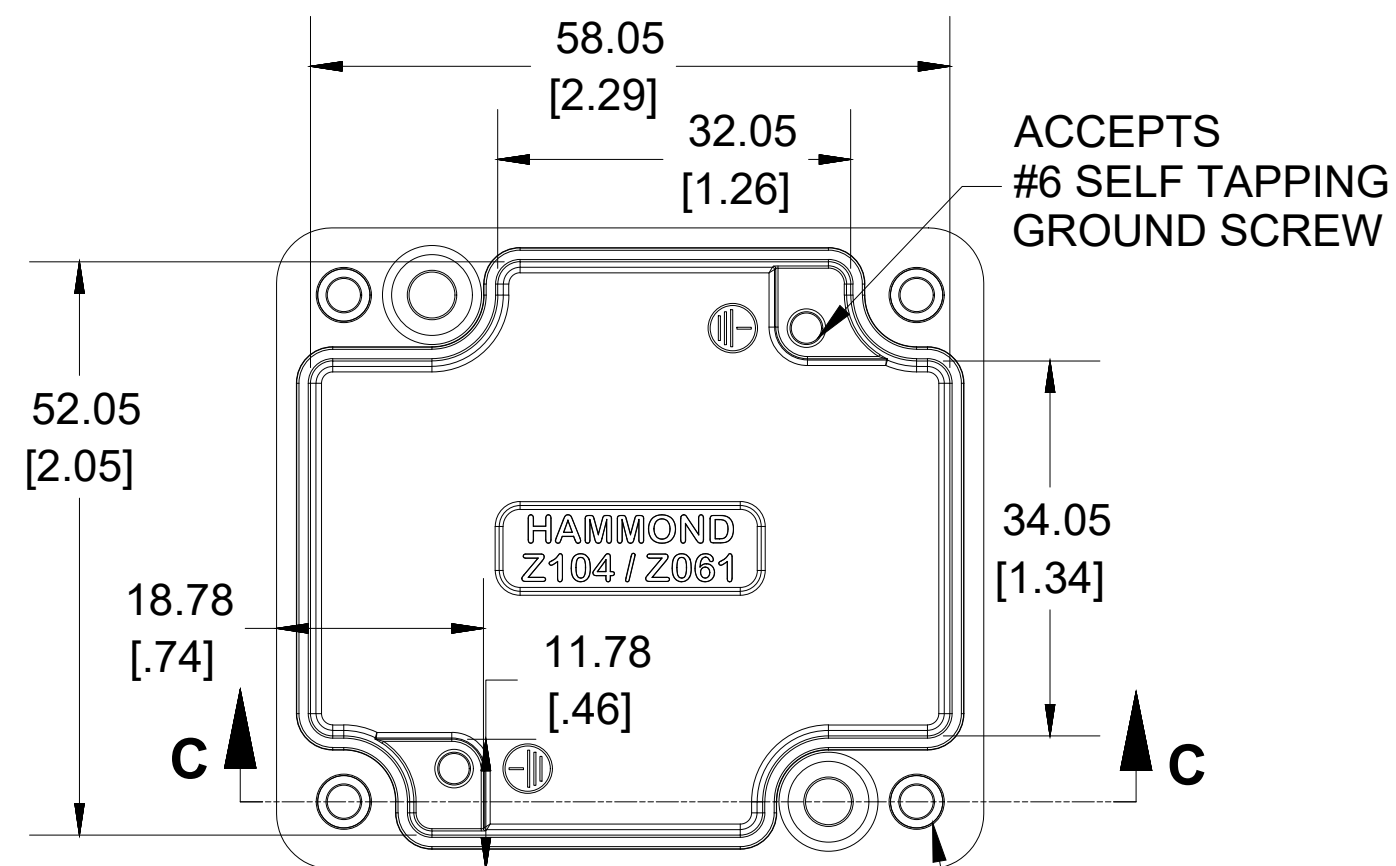
**SECTION B-B
SIDE VIEW**



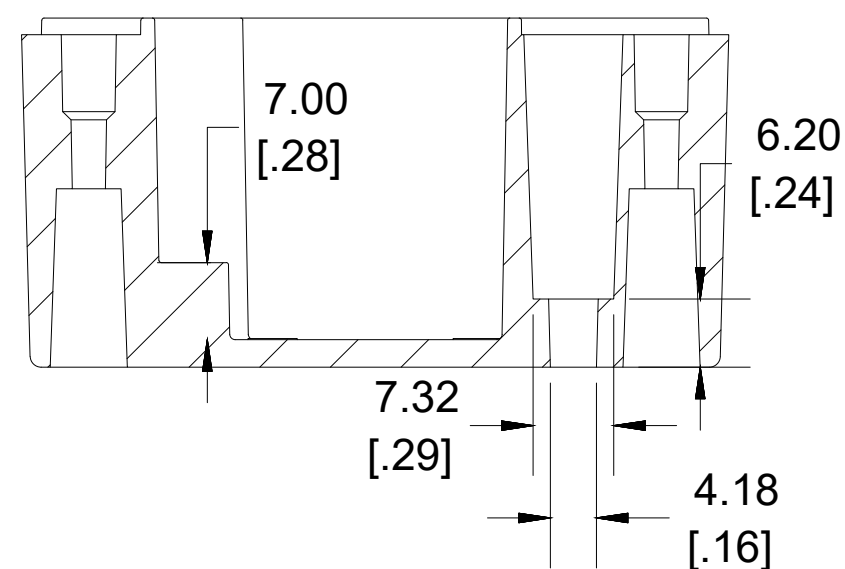
INSIDE LID



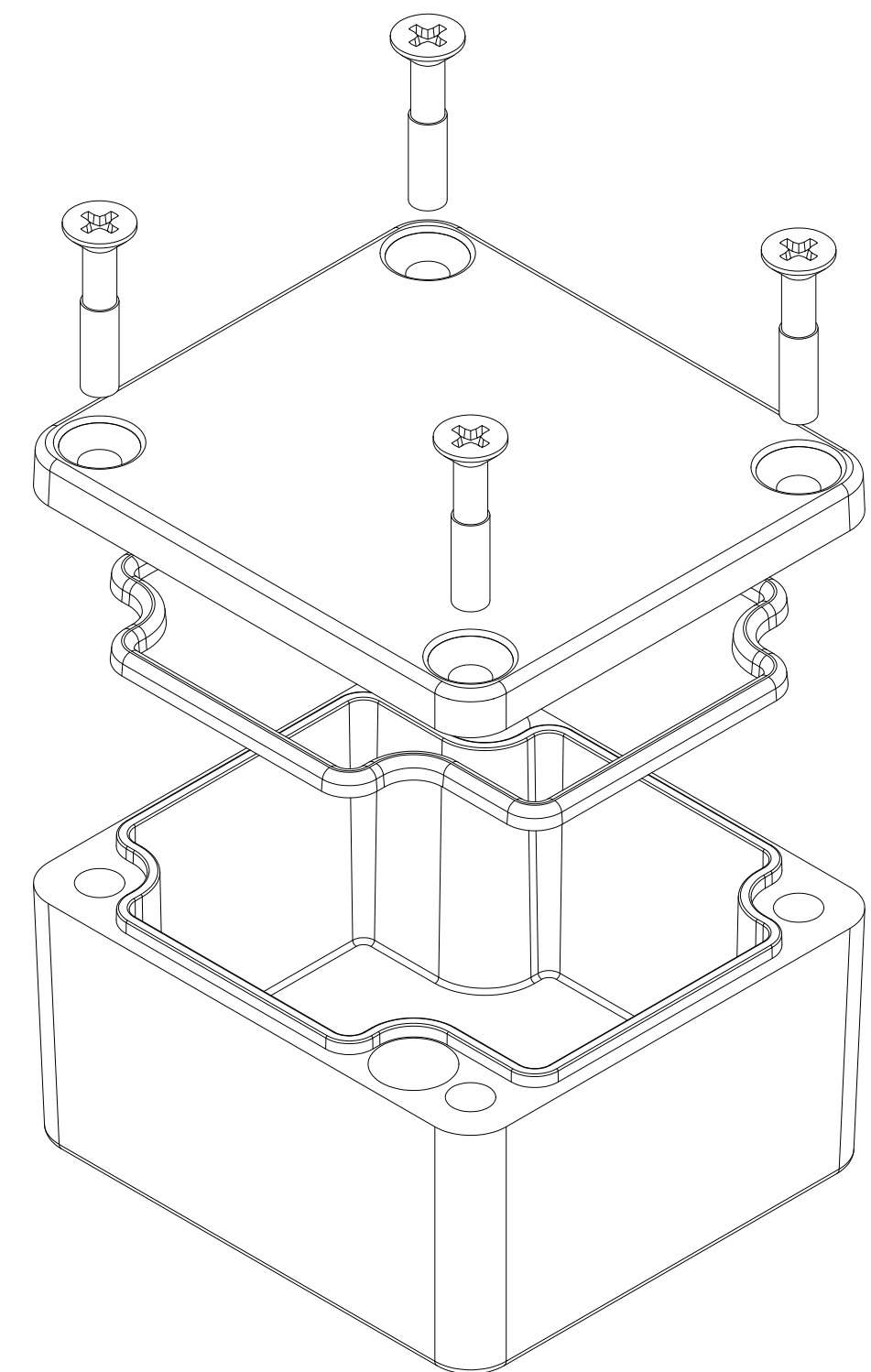
**SECTION A-A
END VIEW**



INSIDE BOX



**SECTION C-C
MOUNTING HOLE**



Enclosures can be Factory Modified (Milling, Drilling, Printing etc.)
Contact Factory mjm@hammondmfg.com for quotes
Solid models of this enclosure available in STEP or IGES.
(Part number and text placement/orientation on our products are subject to change, we do not recommend using them as a locating reference for modification purposes)

NOTE

Purchased assembly includes box, lid, silicone gasket, and 4 cover screws.
Box and lid are made from Diecast Aluminum Alloy.

Screws should not be torqued past 5-7.5 lbf.in (50 -75 cN.m)

PART NUMBERS

1550Z104 Enclosure	
Basic Enclosure	1550Z104
Black Enclosure	1550Z104BK
ACCESSORIES	
Pre-Formed Silicone Gasket (2 Pack)	1550Z104GASKET
Stainless Steel Cover screws (50 Pack) [M4 - 0.7 x 20mm]	SC1550Z103-50
Ground Hardware (50 Pack) [Copper #6-32X5/16 Self-Tapping / #6 Bronze lock Washer]	SCG060-50



**HAMMOND
MANUFACTURING®**

1550Z104

www.hammondmfg.com

Dimensions:
mm
[inches]