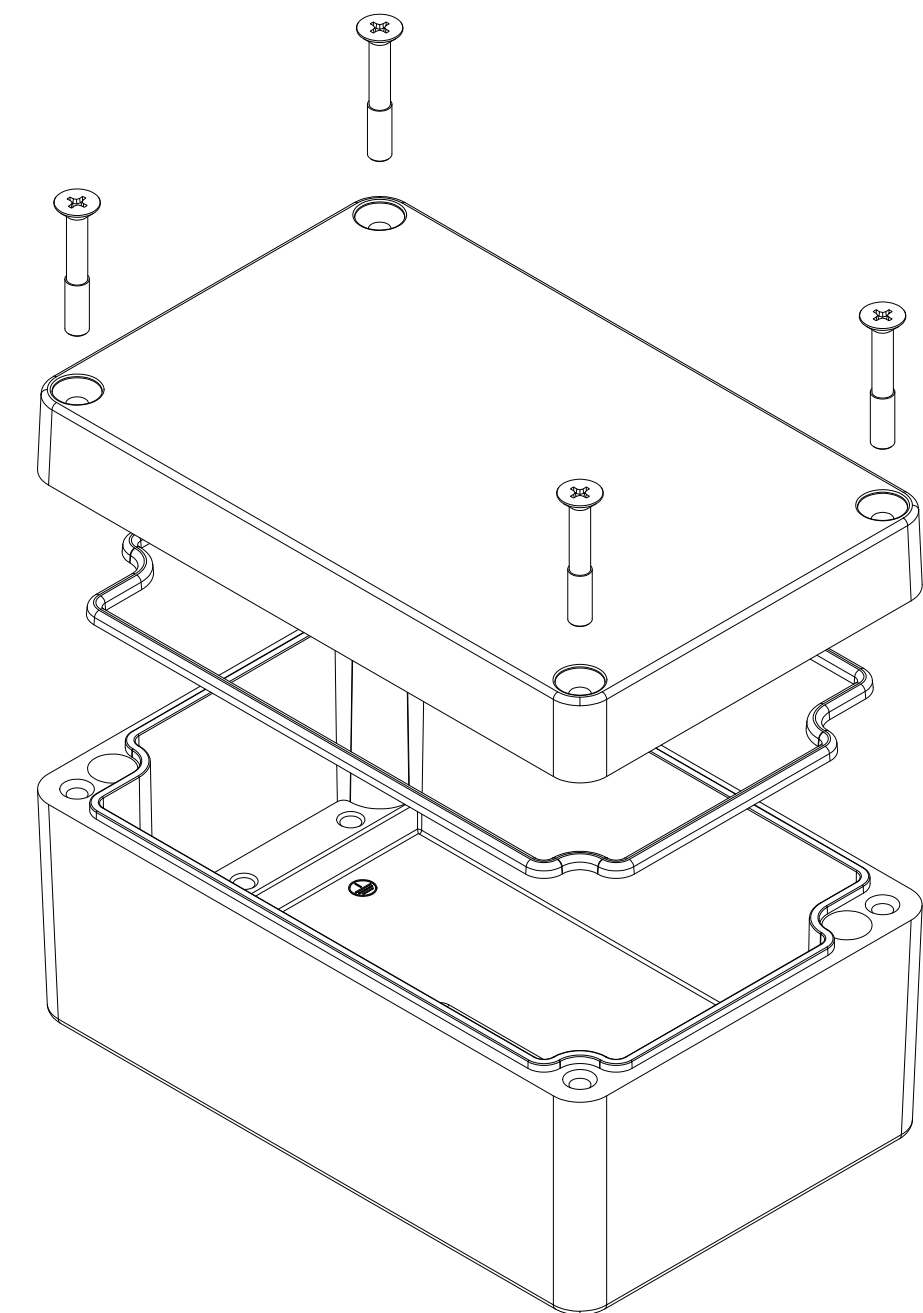
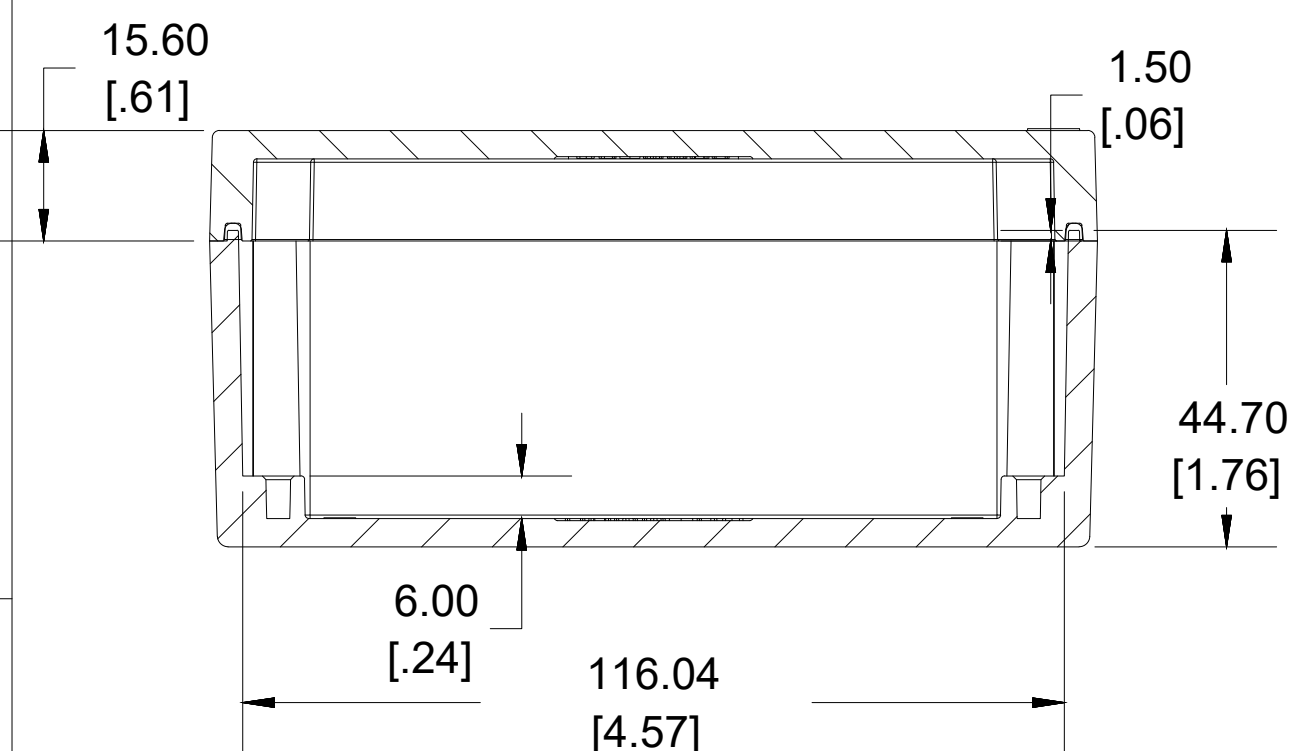


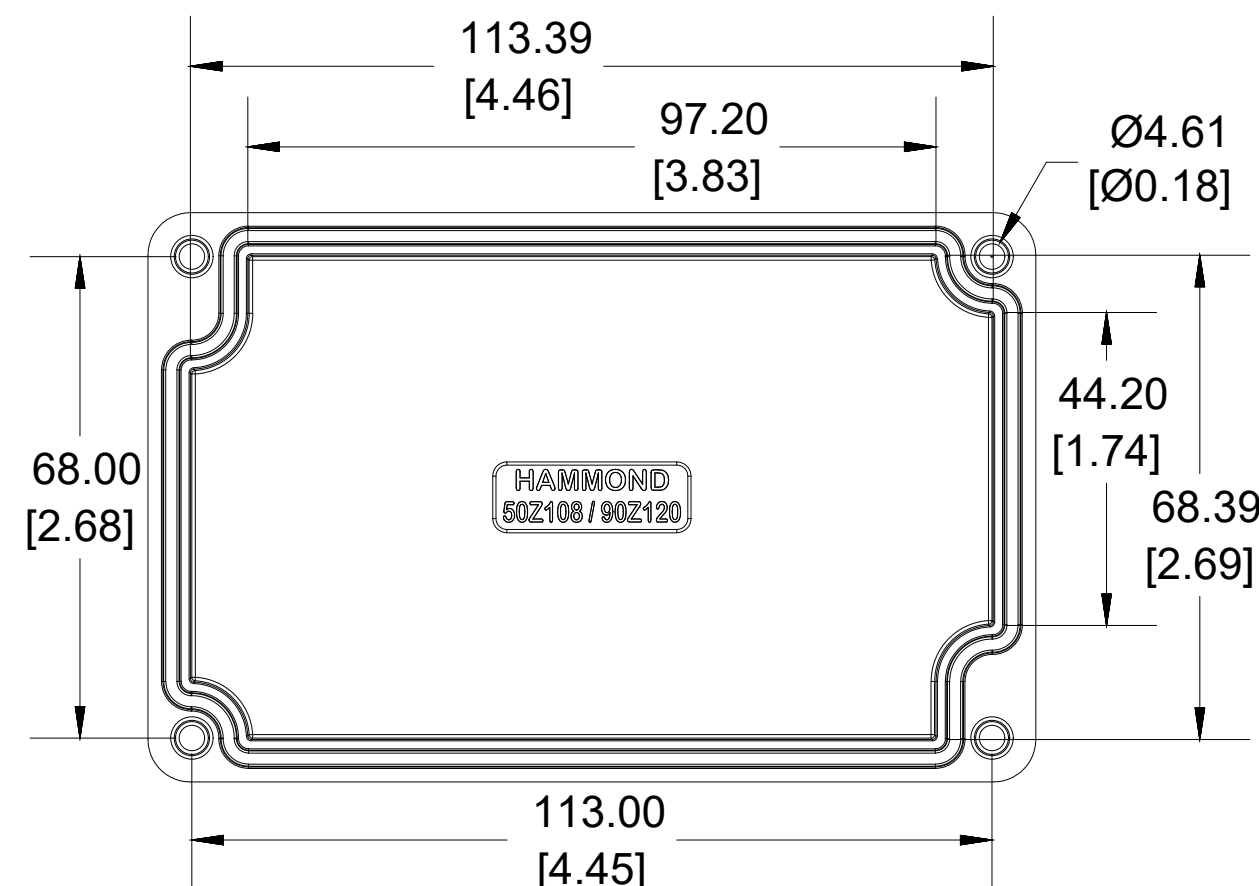
**SECTION A-A  
END VIEW**



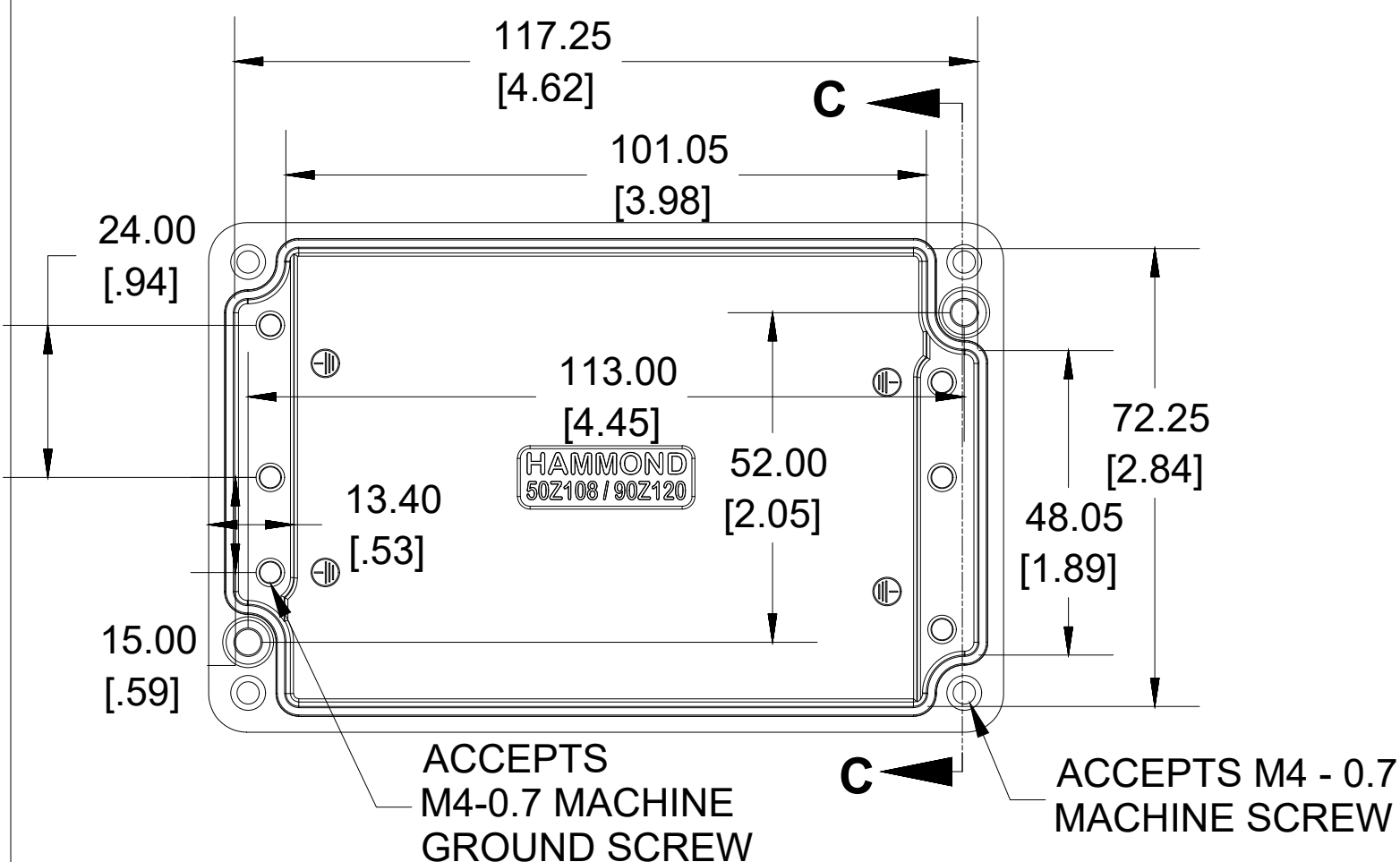
Enclosures can be Factory Modified ( Milling, Drilling, Printing etc.)  
Contact Factory [mjm@hammondmfg.com](mailto:mjm@hammondmfg.com) for quotes  
Solid models of this enclosure available in STEP or IGES.  
(Part number and text placement/orientation on our products are subject to change,  
we do not recommend using them as a locating reference for modification purposes)



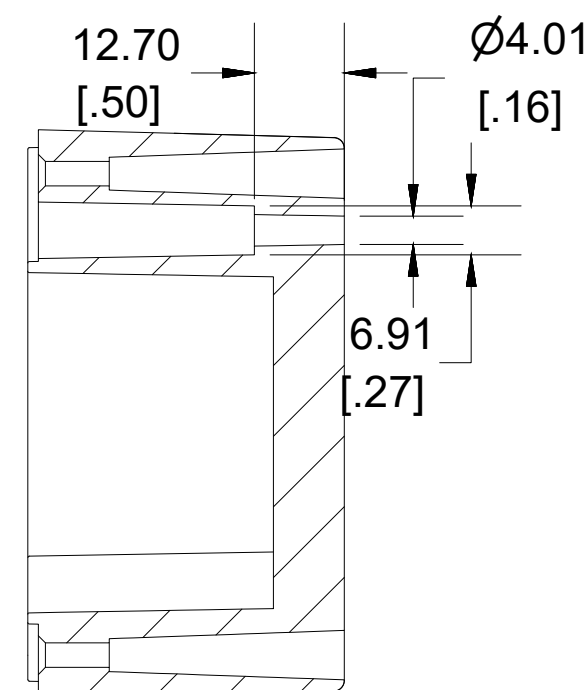
(INSIDE LENGTH)  
**SECTION B-B  
SIDE VIEW**



**INSIDE LID**



**INSIDE BOX**



**SECTION C-C  
MOUNTING HOLE**

NOTE	
Purchased assembly includes box, lid, silicone gasket, and 4 cover screws. Box and lid are made from Diecast Aluminum Alloy.	
Screws should not be torqued past 5-7.5 lbf.in ( 50 -75 cN.m)	
PART NUMBERS	
1550Z108 Enclosure	
Basic Enclosure	1550Z108
Black Enclosure	1550Z108BK
ACCESSORIES	
Pre-Formed Silicone Gasket (2 Pack)	1550Z107GASKET
Stainless Steel Cover screws (50 Pack) [M4 - 0.7 x 25mm]	SC1550Z107-50
Copper Ground Hardware (50 Pack) [M4 - 0.7 X 6mm / M4 Washer]	SCGM4-50



**HAMMOND  
MANUFACTURING®**

**1550Z108**

[www.hammondmfg.com](http://www.hammondmfg.com)

Dimensions:  
mm  
[inches]