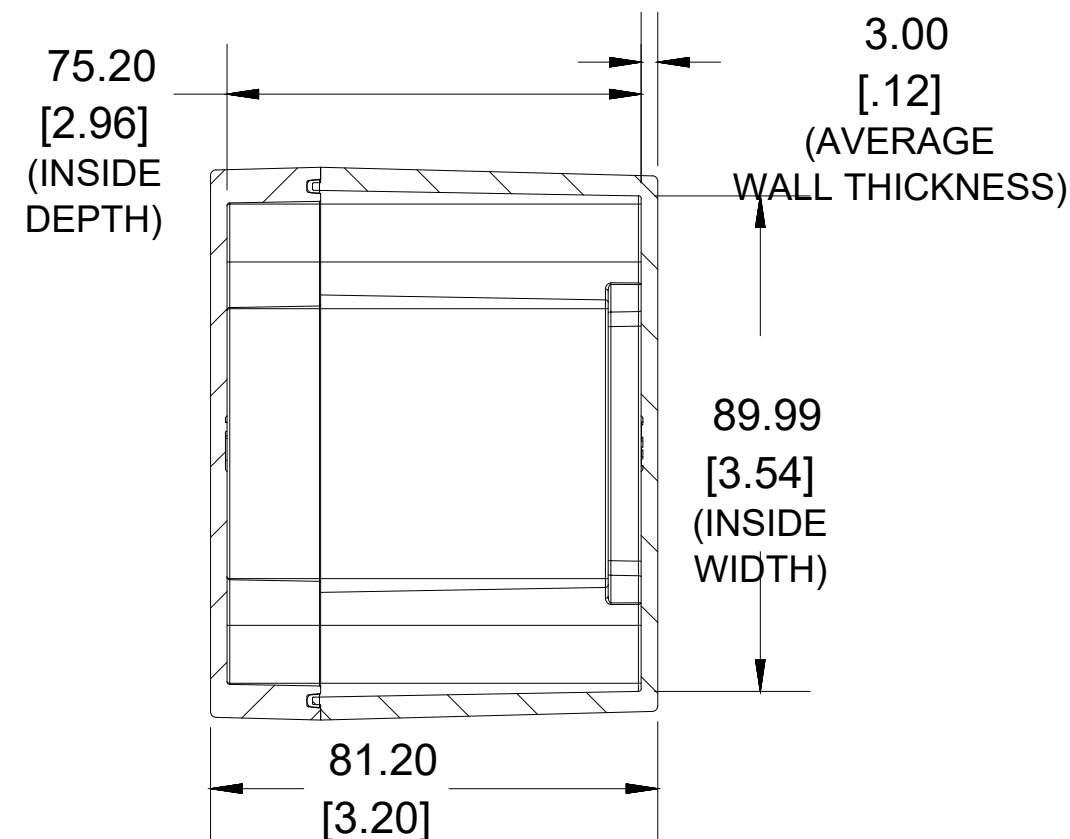
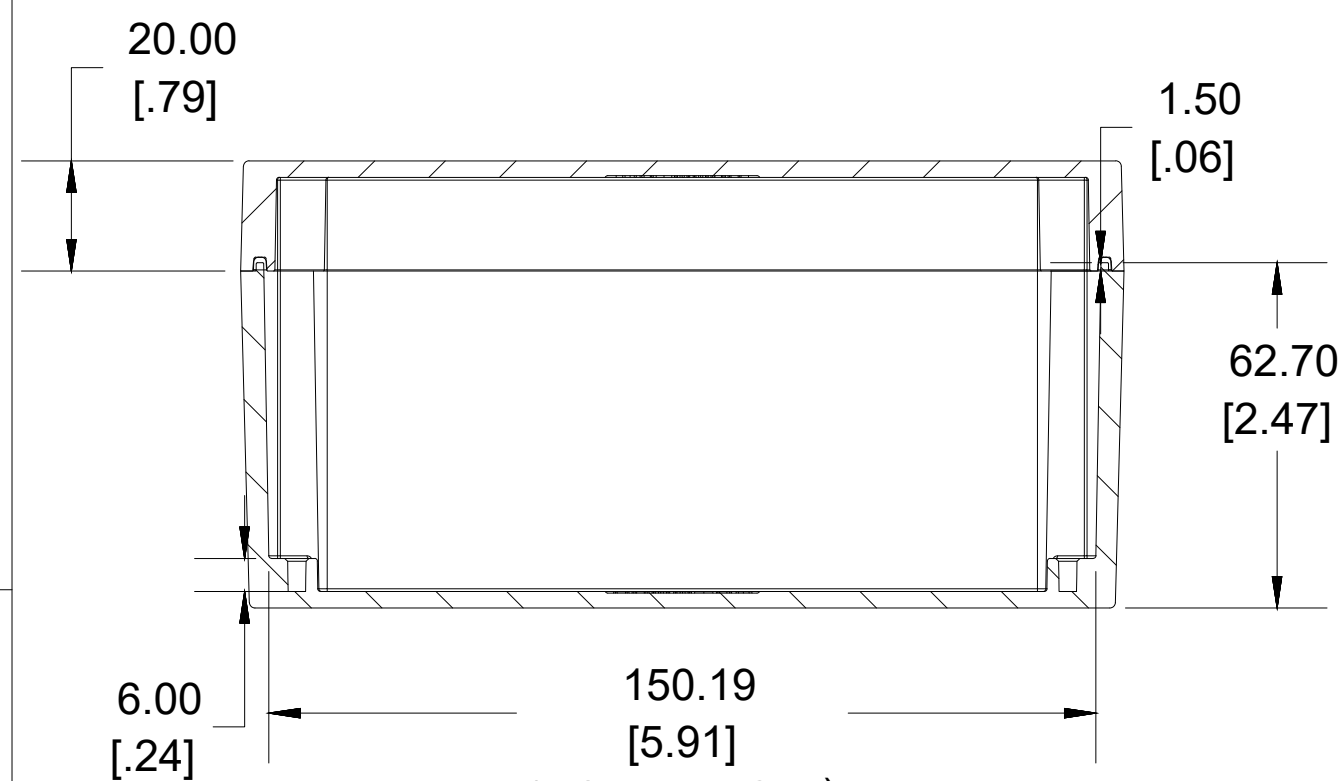


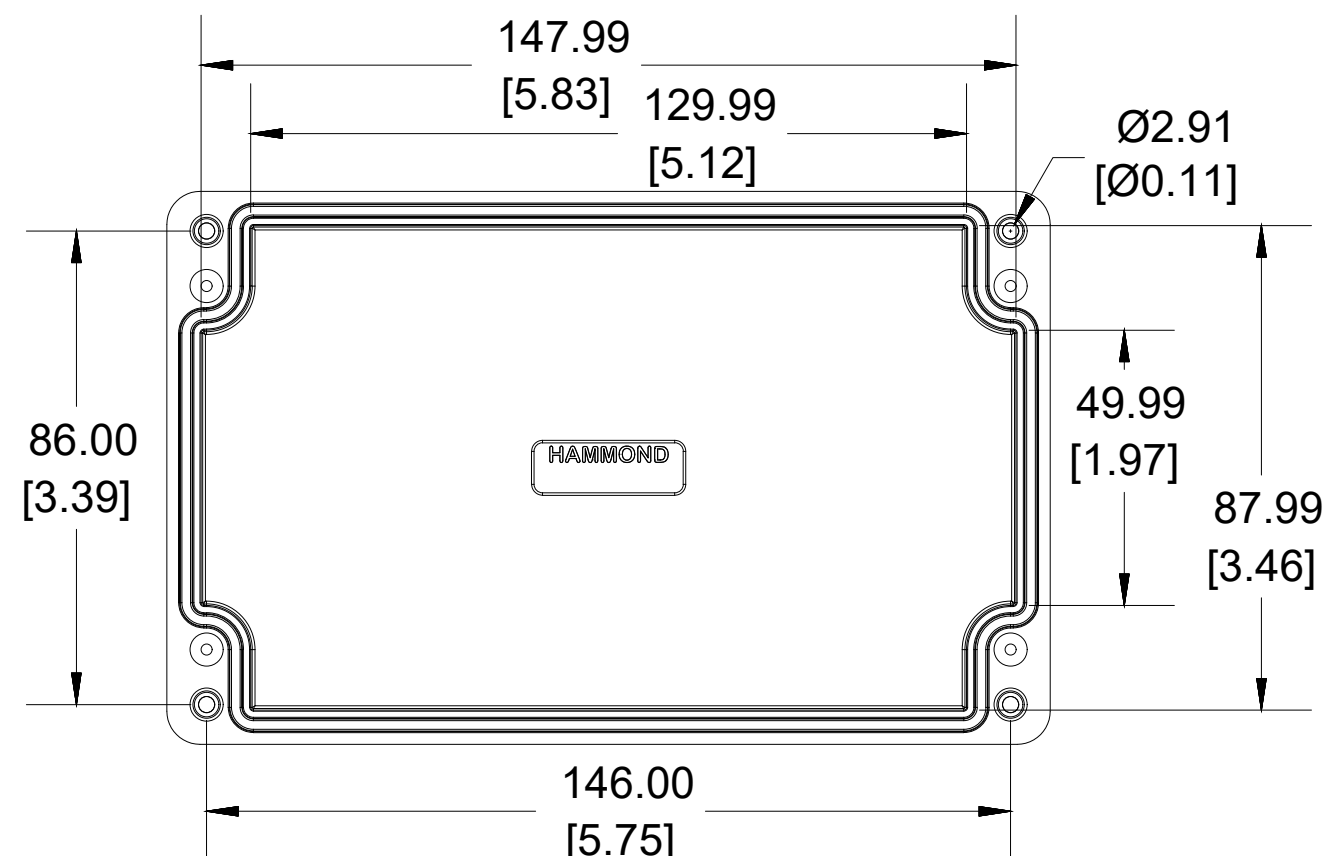
**TOP VIEW**



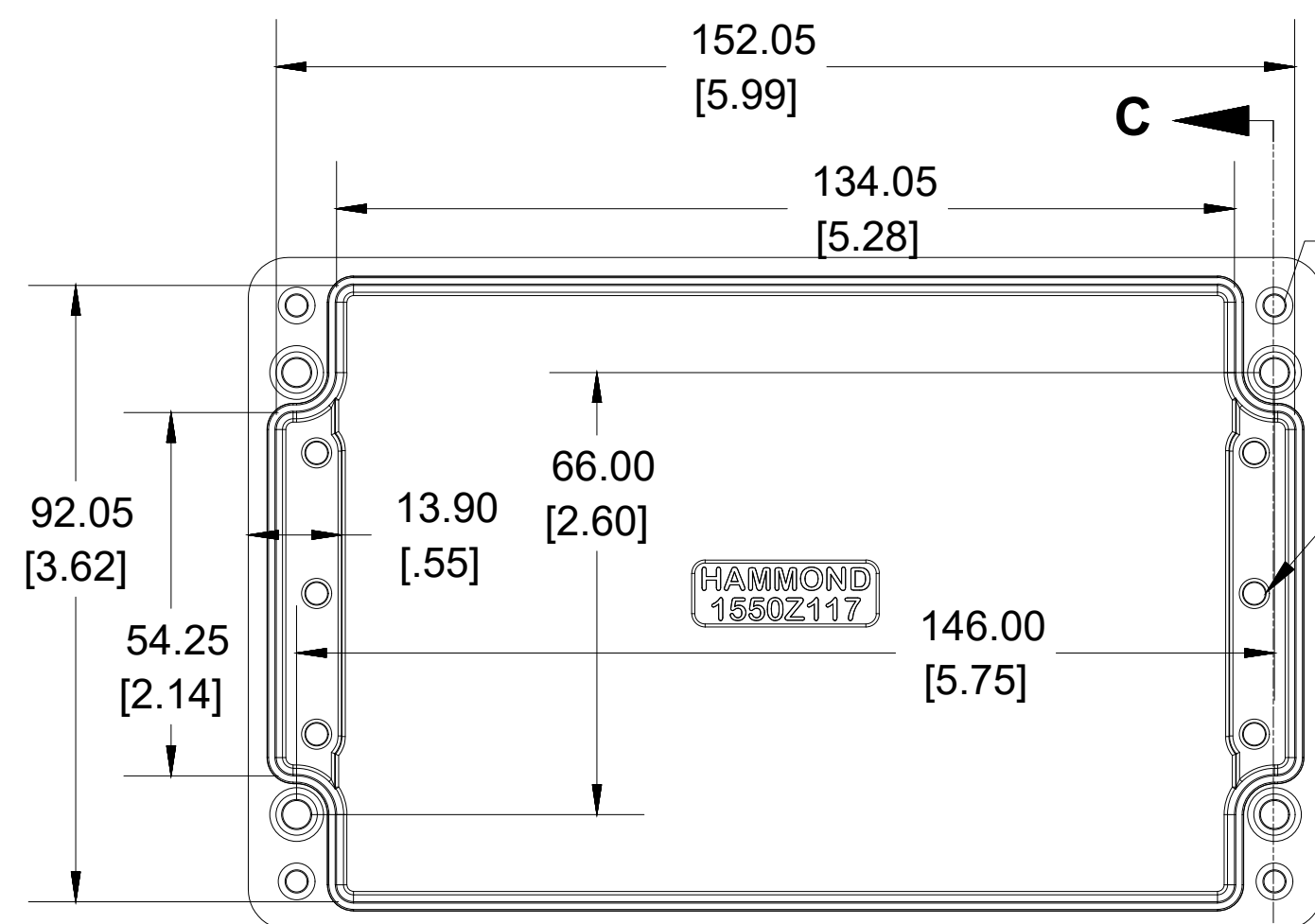
**SECTION A-A  
END VIEW**



**SECTION B-B  
SIDE VIEW**



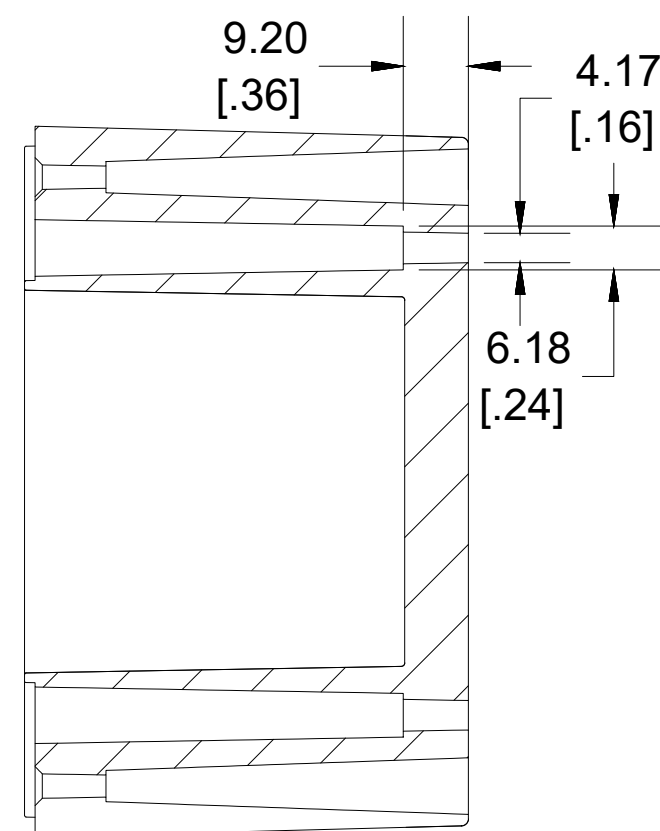
**INSIDE LID**



**INSIDE BOX**

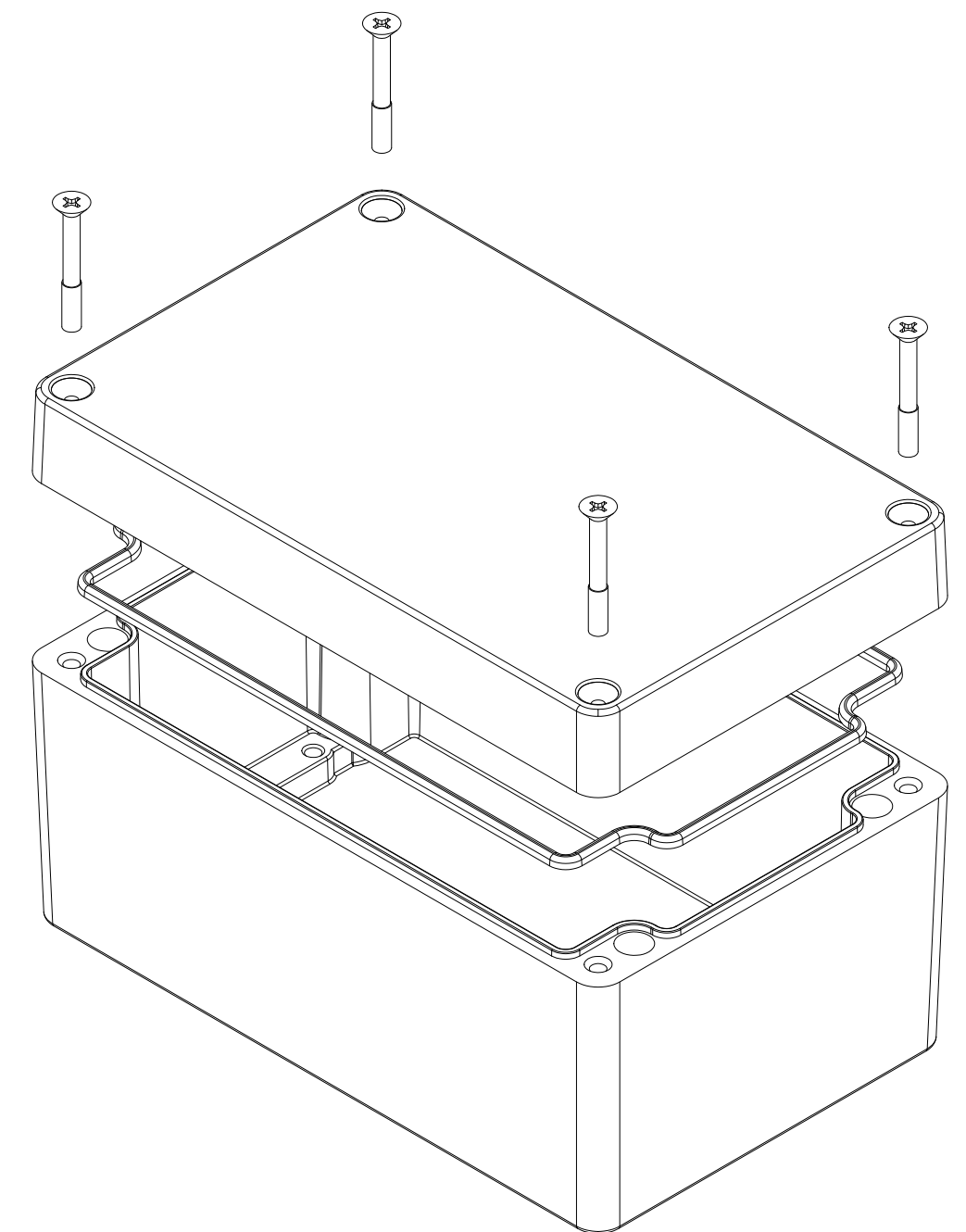
ACCEPTS M4 - 0.7  
MACHINE SCREW

ACCEPTS  
M4-0.7 MACHINE  
GROUND SCREW



**SECTION C-C  
MOUNTING HOLE**

Dimensions:  
mm  
[inches]



**UL** US LISTED  
FILE #E71073  
NEMA 4, 4X

Enclosures can be Factory Modified ( Milling, Drilling, Printing etc.)  
Contact Factory [mjm@hammondmfg.com](mailto:mjm@hammondmfg.com) for quotes  
Solid models of this enclosure available in STEP or IGES.  
(Part number and text placement/orientation on our products are subject to change,  
we do not recommend using them as a locating reference for modification purposes)

**NOTE**

Purchased assembly includes box, lid, silicone gasket, and 4 cover screws.  
Box and lid are made from Diecast Aluminum Alloy.

**Screws should not be torqued past 5-7.5 lbf.in ( 50 -75 cN.m)**

**PART NUMBERS**

**1550Z117 Enclosure**

Basic Enclosure

1550Z117

Black Enclosure

1550Z117BK

**ACCESSORIES**

Pre-Formed Silicone Gasket (2 Pack)

1550Z116GASKET

Stainless Steel Cover screws (30 Pack)  
[M4 - 0.7 x 30mm]

SC1550Z116-30

Copper Ground Hardware (50 Pack)  
[M4 - 0.7 X 6mm / M4 Washer]

SCGM4-50

**HAMMOND  
MANUFACTURING®**

**1550Z117**

[www.hammondmfg.com](http://www.hammondmfg.com)