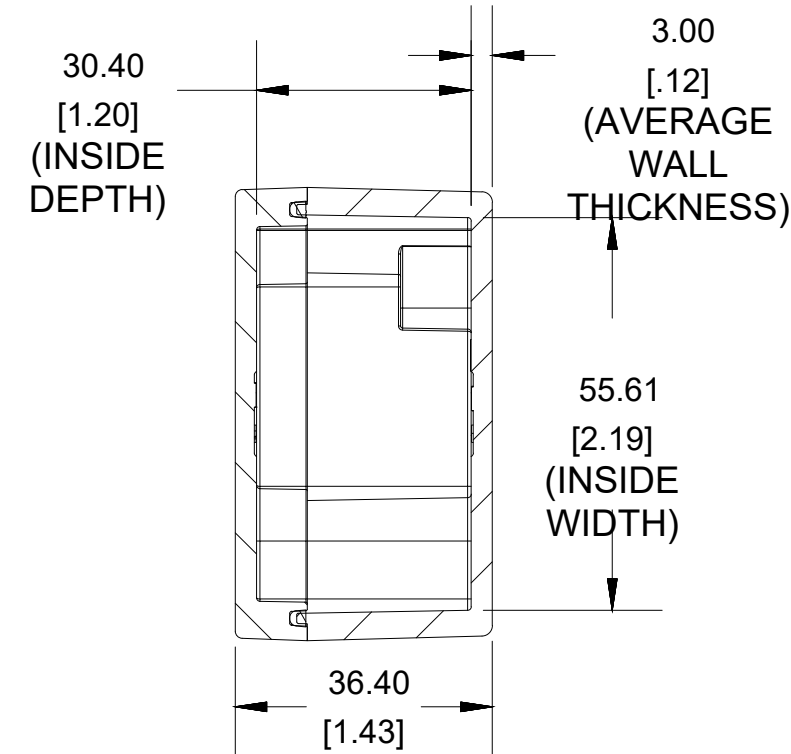
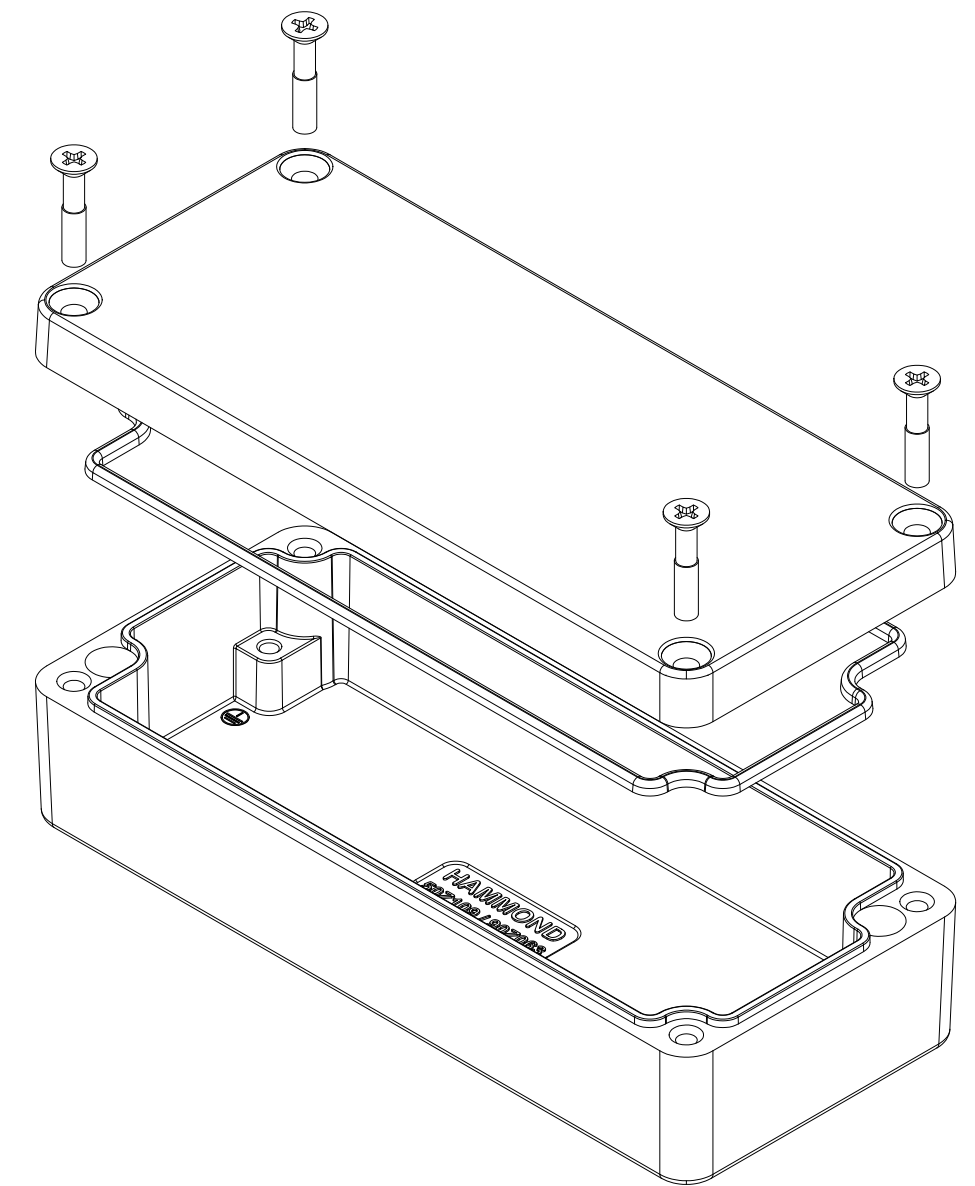




TOP VIEW

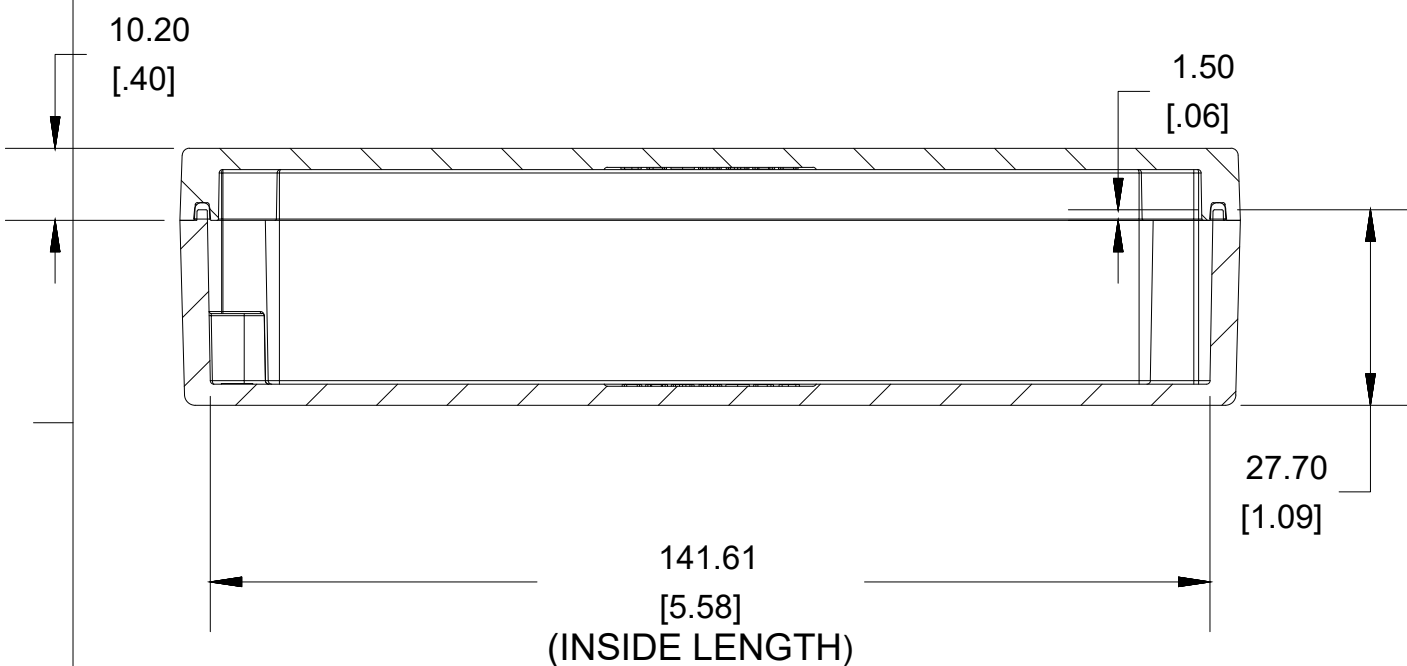


**SECTION A-A
END VIEW**

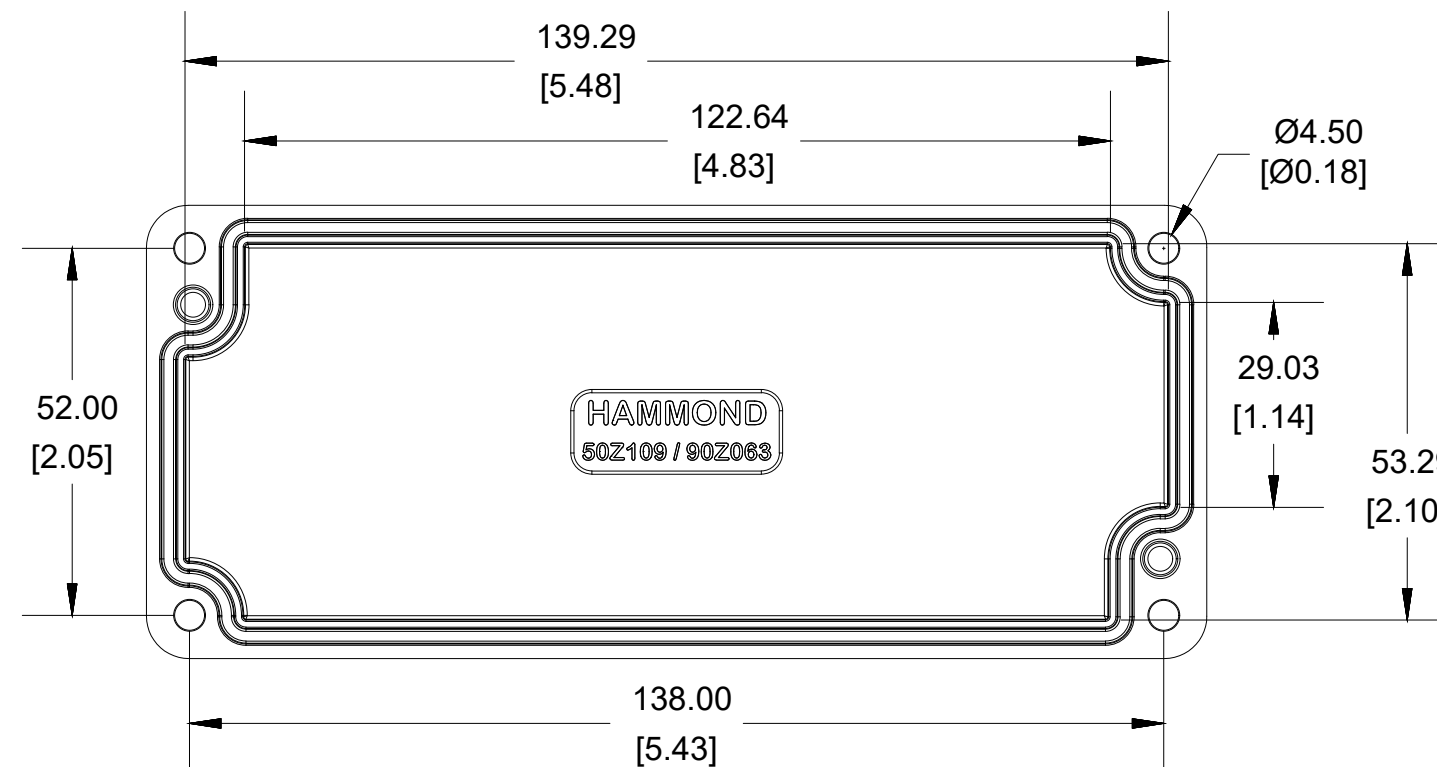


UL US LISTED
FILE #E65324
NEMA 4, 4X, 6, 6P

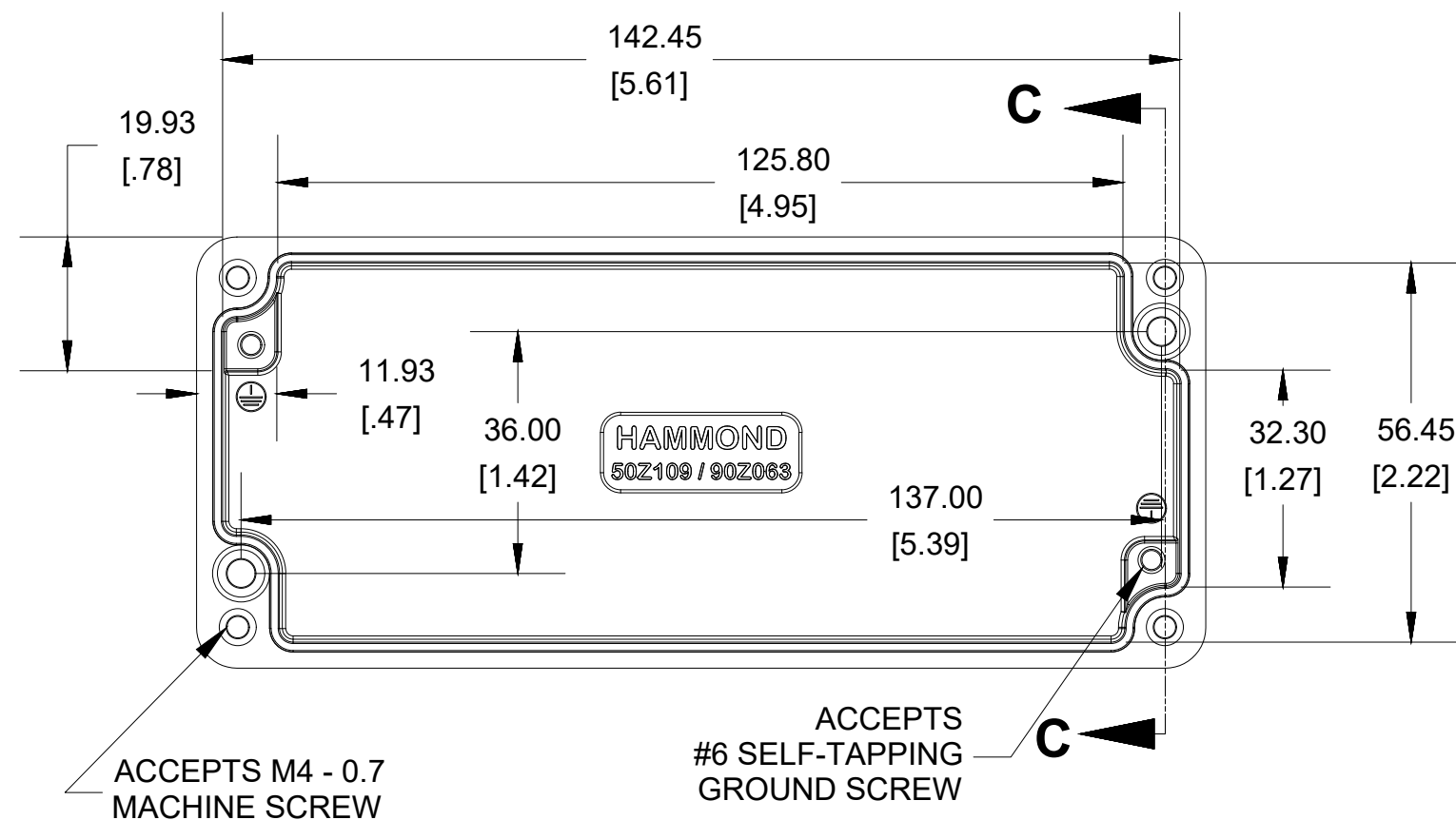
Enclosures can be Factory Modified (Milling, Drilling, Printing etc.)
Contact Factory mjm@hammondmfg.com for quotes
Solid models of this enclosure available in STEP or IGES.
(Part number and text placement/orientation on our products are subject to change,
we do not recommend using them as a locating reference for modification purposes)



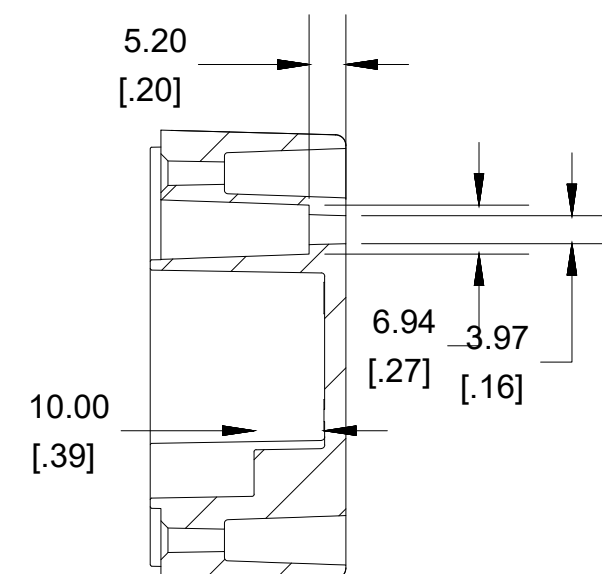
**SECTION B-B
SIDE VIEW**



INSIDE LID



INSIDE BOX



**SECTION C-C
MOUNTING HOLE**

NOTE	
Purchased assembly includes box, lid, silicone gasket, 4 cover screws and 4 ground screws with washers. Box and lid are made from Diecast Aluminum Alloy.	
Recommended cover screw Torque 5-7.5 lbf.in (50 -75 cN.m)	
1590Z063	
1590Z063 Enclosure	
Natural Enclosure	1590Z063
Black Enclosure	1590Z063BK
Grey Enclosure - RAL7001 Gloss	1590Z063GY
ACCESSORIES	
Pre-Formed Silicone Gasket (2 Pack)	1590Z063G
Ground Hardware (50 Pack)	SCG060-50
[Copper #6-32X5/16 Self-Tapping / Stainless Steel Cover screws (50 pkg) [M4 - 0.7 x 20mm]	SC1550Z103-50

HAMMOND MANUFACTURING®
1590Z063
www.hammondmfg.com

Dimensions:
mm
[inches]