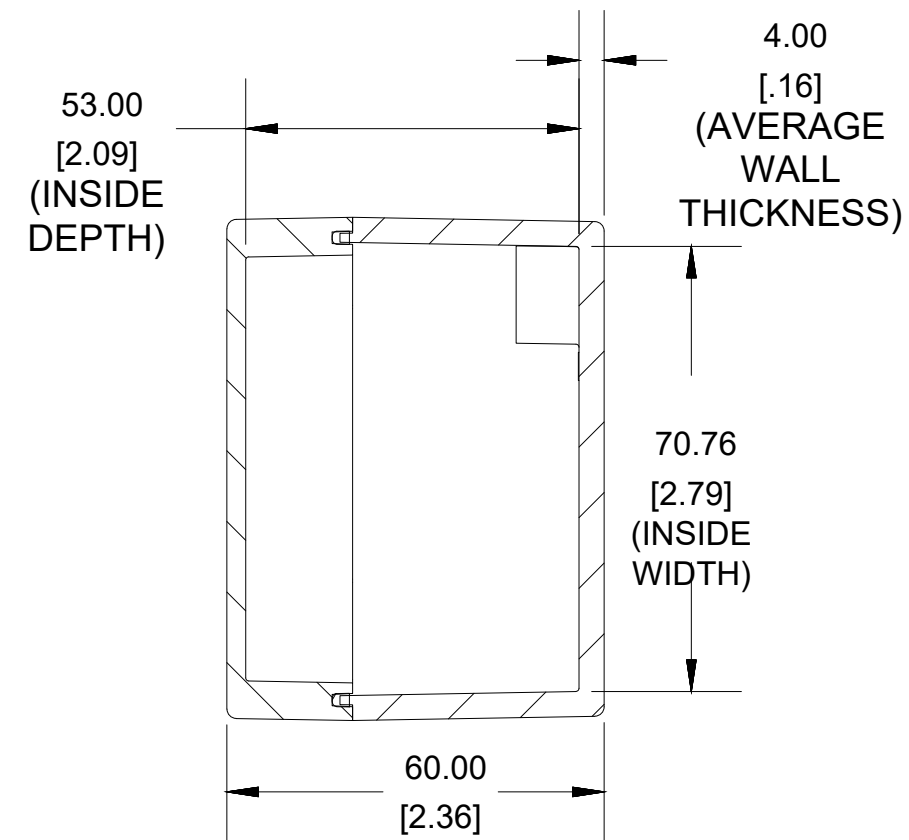
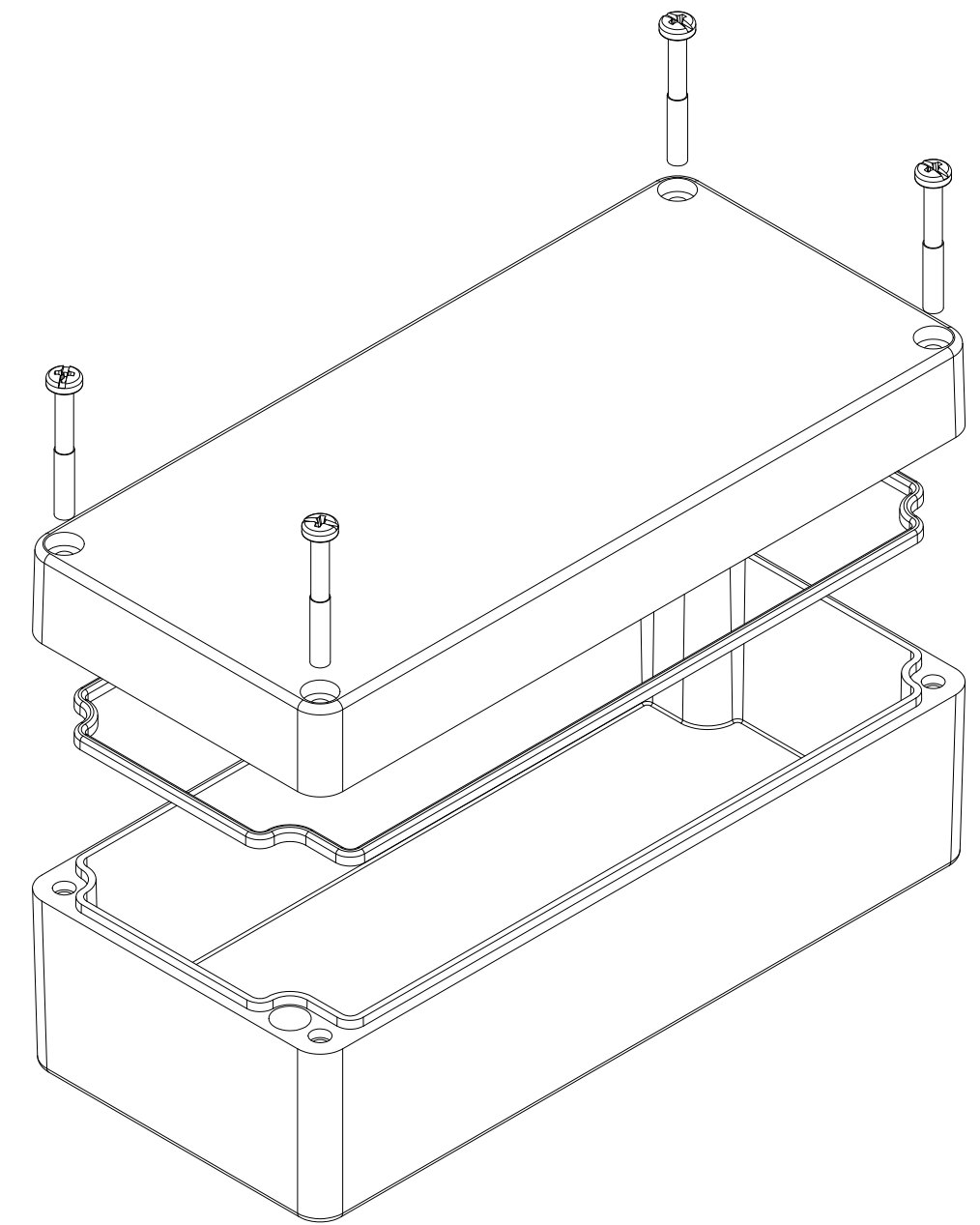


**TOP VIEW**



**SECTION A-A  
END VIEW**



Enclosures can be Factory Modified ( Milling, Drilling, Printing etc.)  
Contact Factory [mjm@hammondmfg.com](mailto:mjm@hammondmfg.com) for quotes  
Solid models of this enclosure available in STEP or IGES.  
(Part number and text placement/orientation on our products are subject to change,  
we do not recommend using them as a locating reference for modification purposes)

**NOTE**

Purchased assembly includes box, lid, silicone gasket,  
4 cover screws and 3 ground screws with washers.  
Box and lid are made from Diecast Aluminum Alloy.

**Recommended cover screw Torque 5-7.5 lbf.in ( 50 -75 cN.m)**

**1590Z135**

**1590Z135 Enclosure**

Natural Enclosure

1590Z135

Black Enclosure

1590Z135BK

Grey Enclosure - RAL7001 Gloss

1590Z135GY

**ACCESSORIES**

Pre-Formed Silicone Gasket (2 Pack)

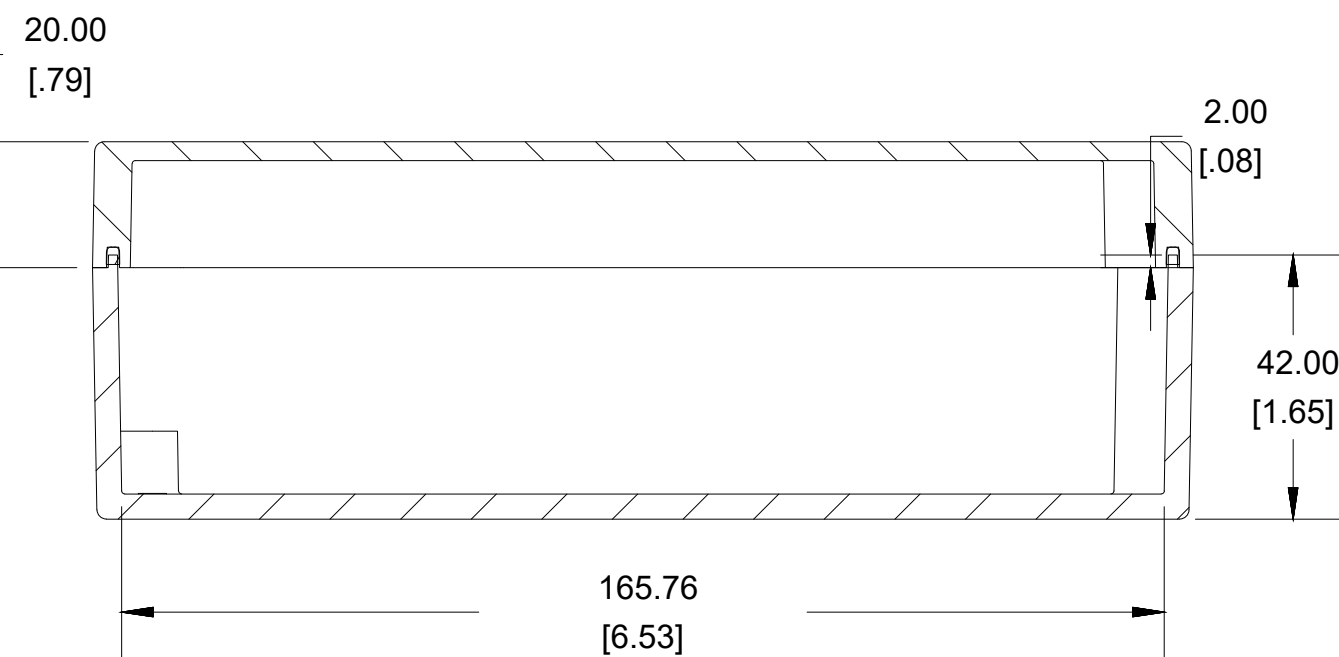
1590Z130G

Copper Ground Hardware (50 Pack)  
[M4 - 0.7 X 6mm / M4 Washer]

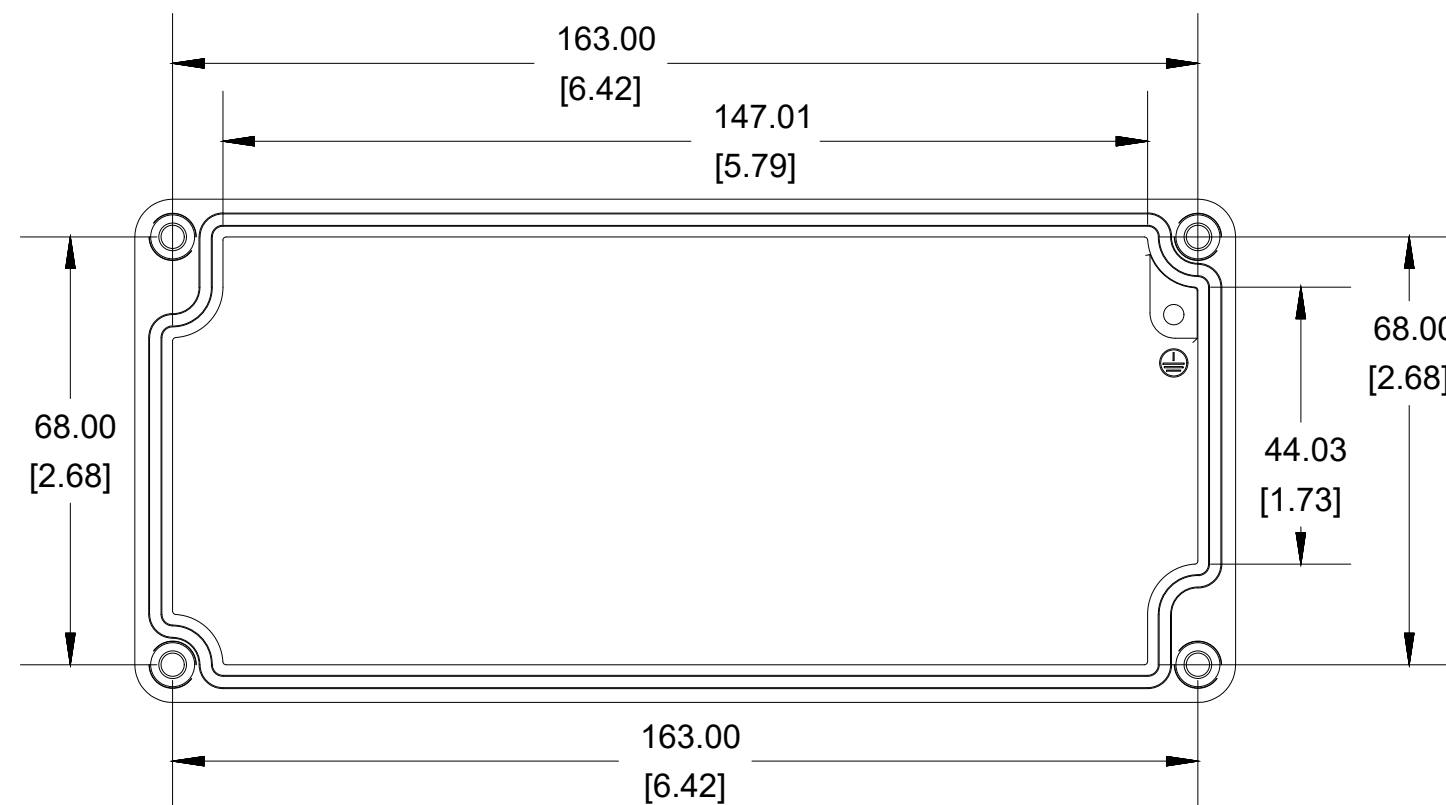
SCGM4-50

Stainless Steel Cover screws (30 pkg)  
[M4 - 0.7 x 30mm]

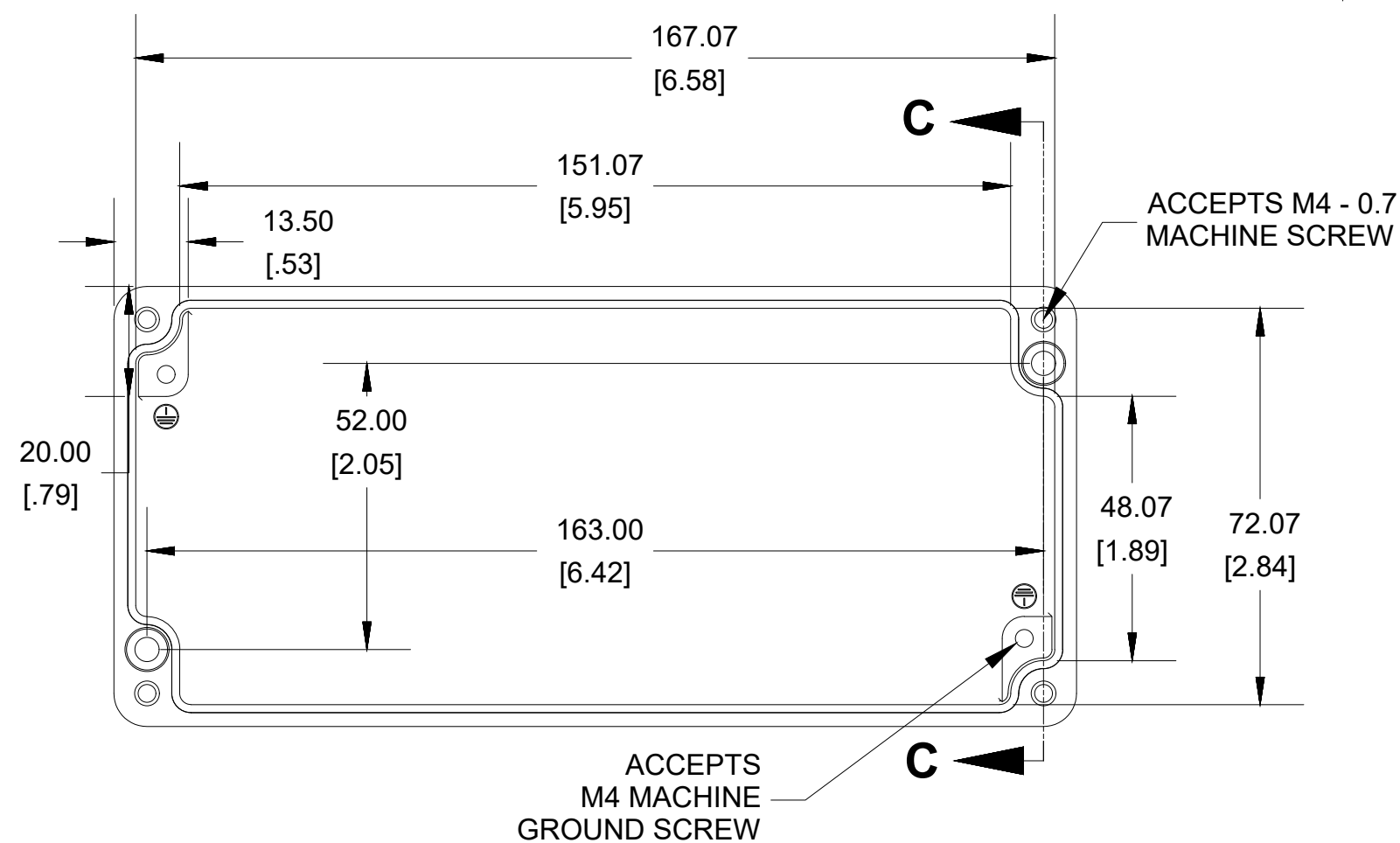
SC574-30



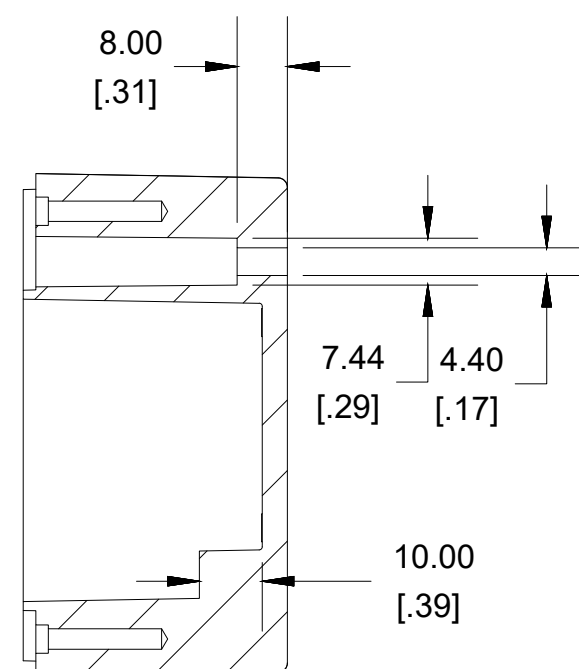
**SECTION B-B  
SIDE VIEW**



**INSIDE LID**



**INSIDE BOX**



**SECTION C-C  
MOUNTING HOLE**

**Dimensions:**  
mm  
[inches]

**HAMMOND MANUFACTURING®**

**1590Z135**

[www.hammondmfg.com](http://www.hammondmfg.com)