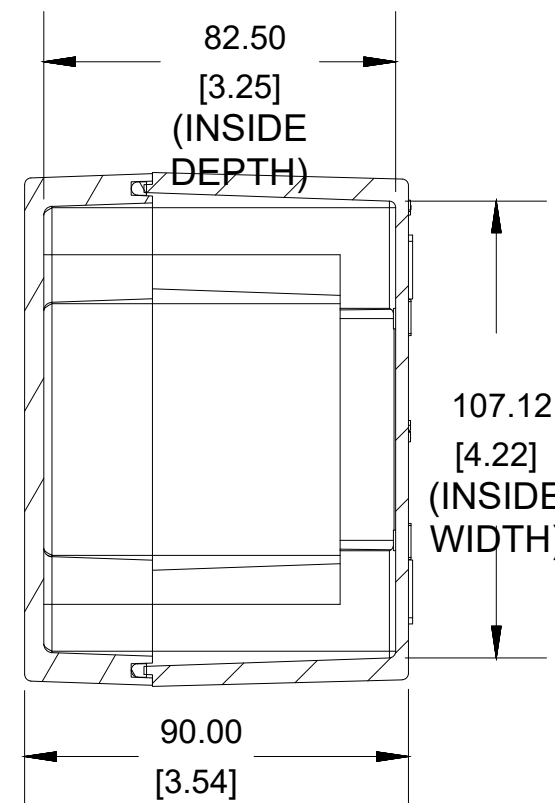
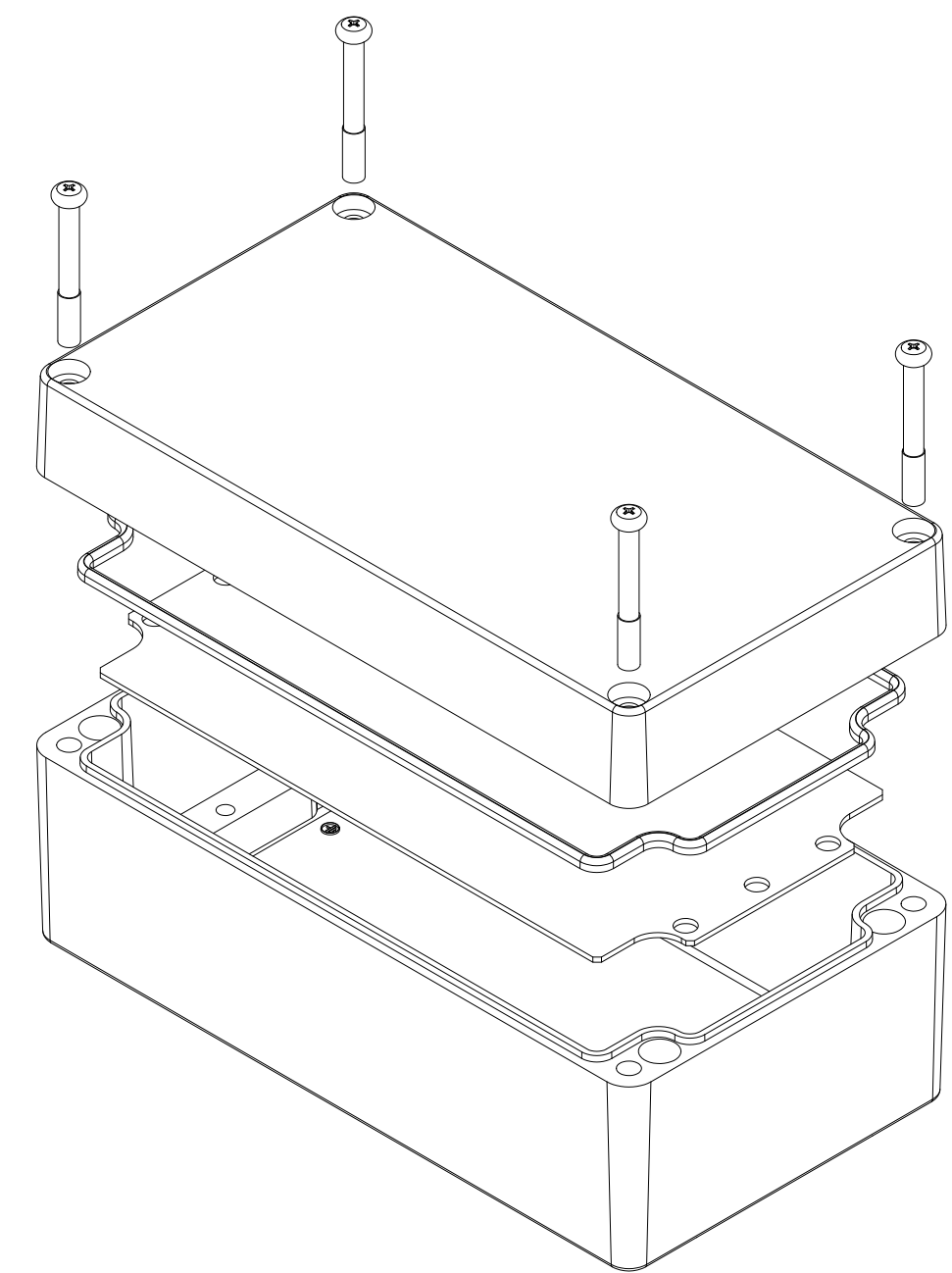


TOP VIEW

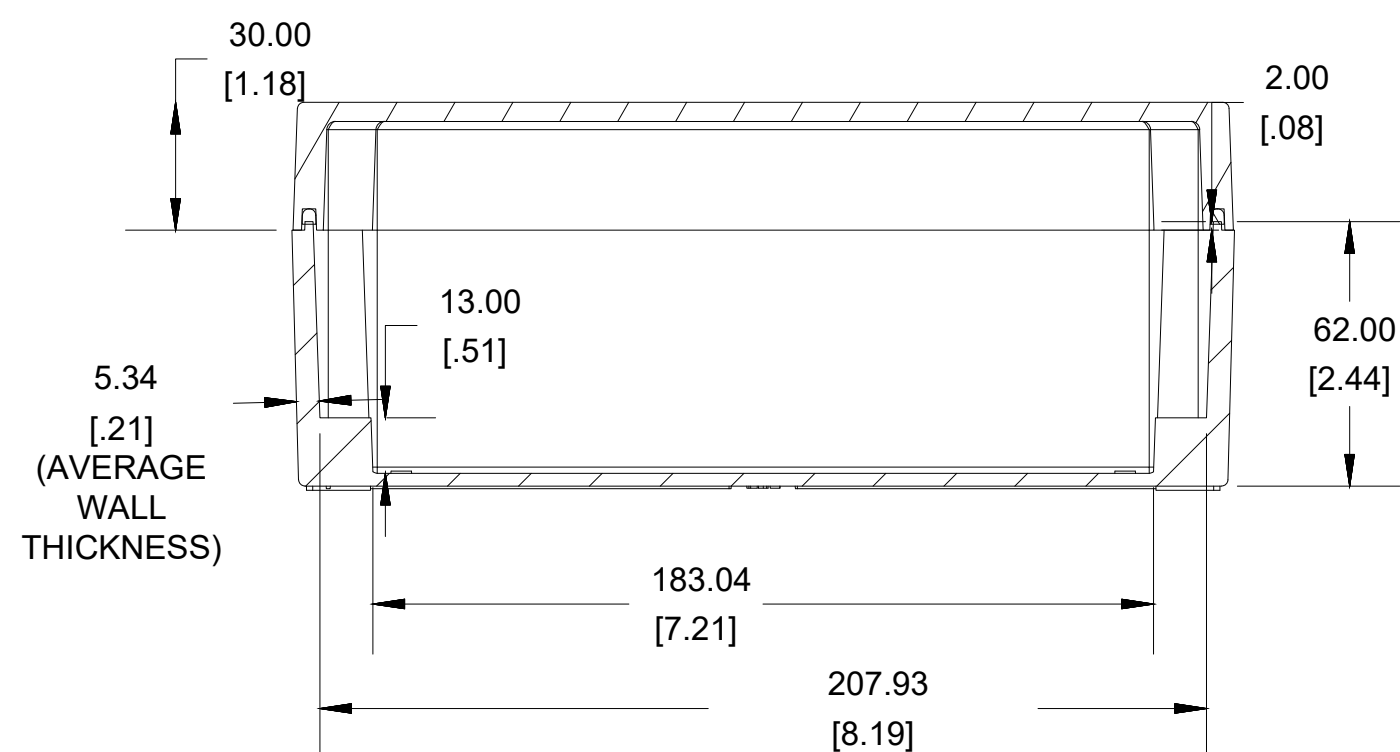


**SECTION A-A
END VIEW**

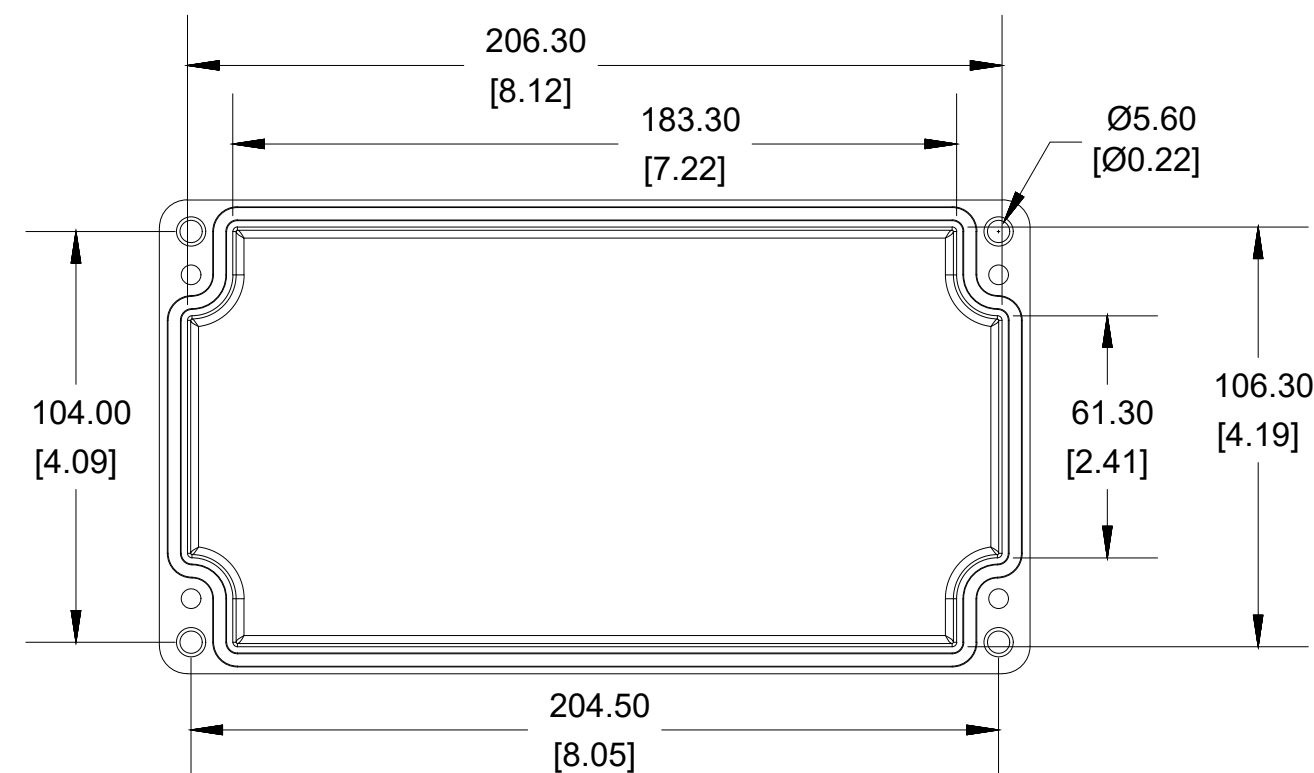


UL US LISTED
FILE #E65324
NEMA 4, 4X, 6, 6P

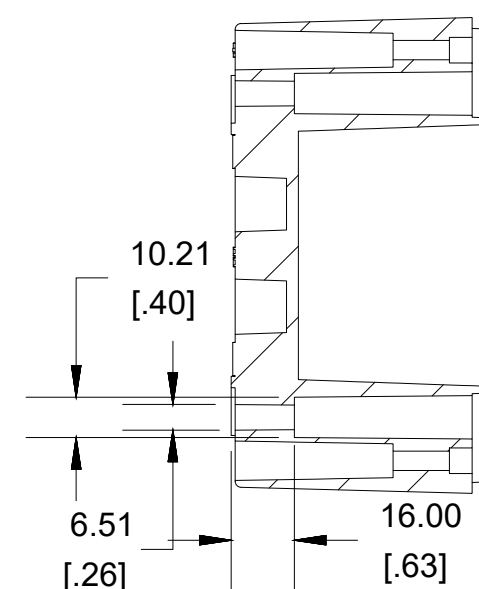
Enclosures can be Factory Modified (Milling, Drilling, Printing etc.)
Contact Factory mjm@hammondmfg.com for quotes
Solid models of this enclosure available in STEP or IGES.
(Part number and text placement/orientation on our products are subject to change,
we do not recommend using them as a locating reference for modification purposes)



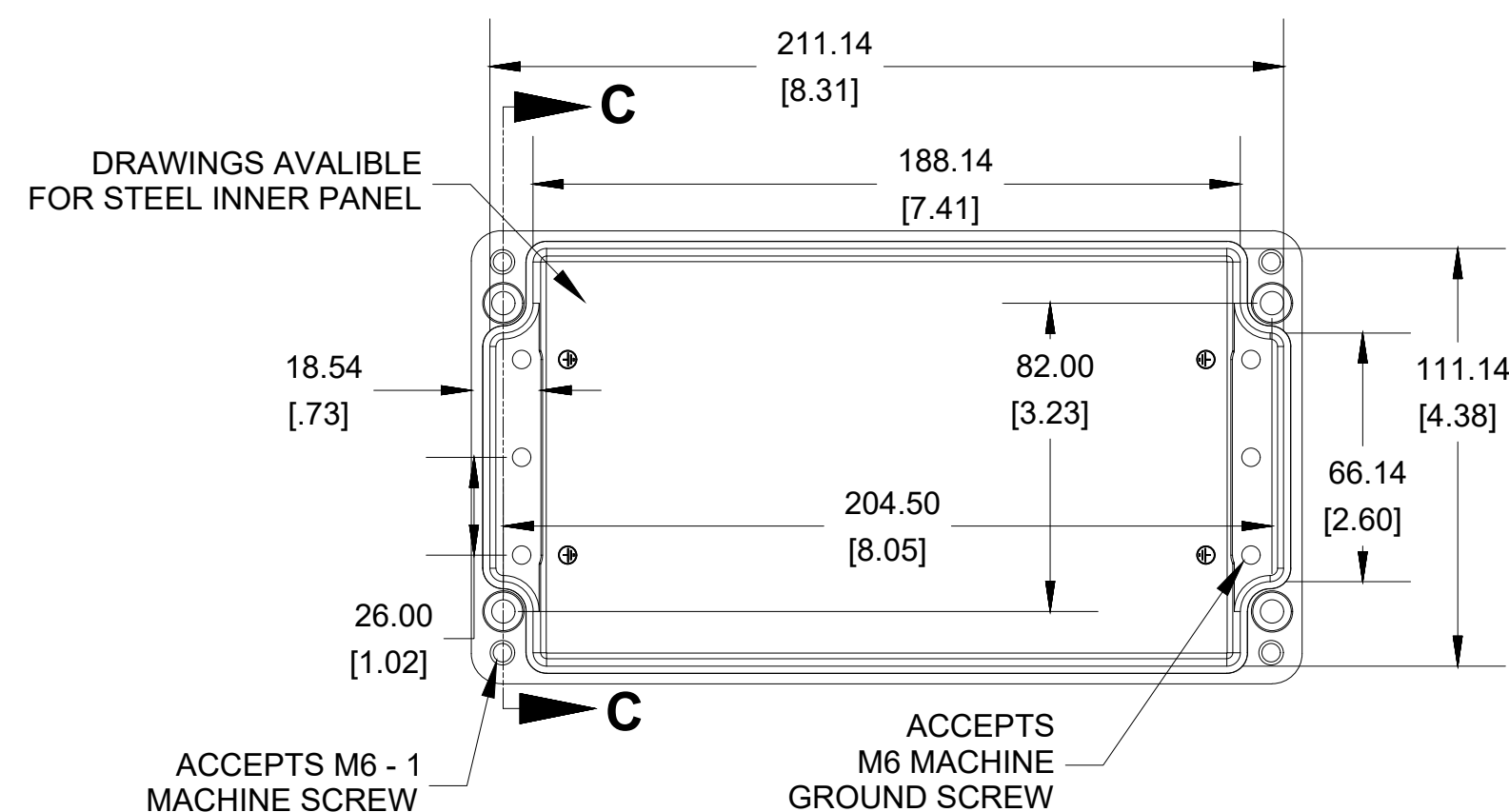
**SECTION B-B
SIDE VIEW**



INSIDE LID



**SECTION C-C
MOUNTING HOLE**



INSIDE BOX

Dimensions:
mm
[inches]

NOTE

Purchased assembly includes box, lid, silicone gasket,
4 cover screws and 4 ground screws with washers.
Box and lid are made from Diecast Aluminum Alloy.

Recommended cover screw Torque 15-17 lbf.in (150 -170 cN.m)

1590Z155

1590Z155 Enclosure

Natural Enclosure 1590Z155

Black Enclosure 1590Z155BK

Grey Enclosure - RAL7001 Gloss 1590Z155GY

ACCESSORIES

Steel Inner Panel 1590Z150PL

Pre-Formed Silicone Gasket (2 Pack) 1590Z150G

Copper Ground Hardware (20 Pack)
[M6 - 1.0 X 10mm / M6 Washer] SCGM6-20

Stainless Steel Cover screws (12 pkg)
[M6 - 1.0 x 45mm] SC565-12

**HAMMOND
MANUFACTURING®**

1590Z155

www.hammondmfg.com