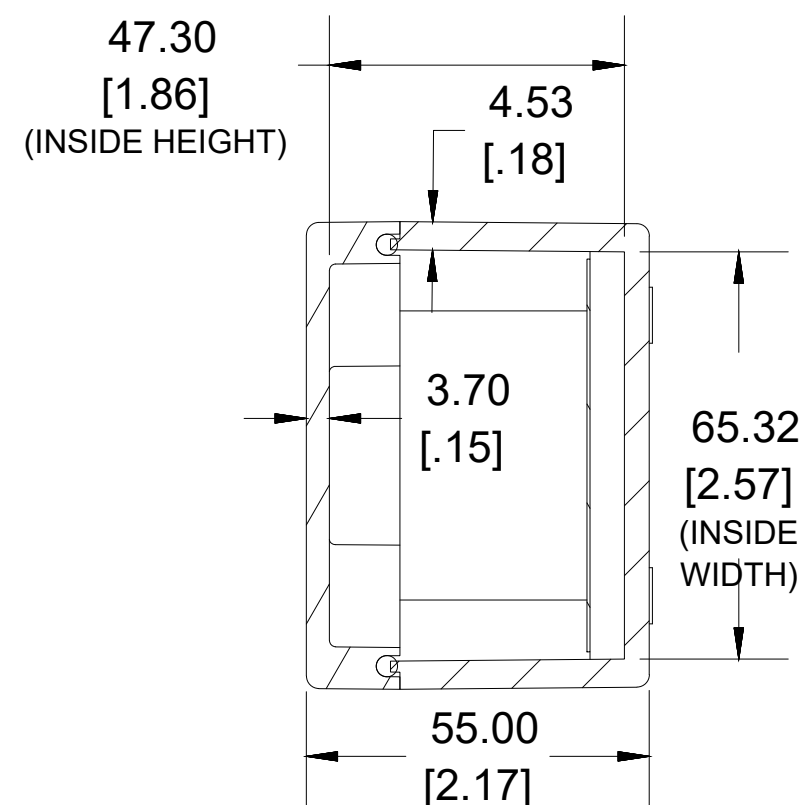
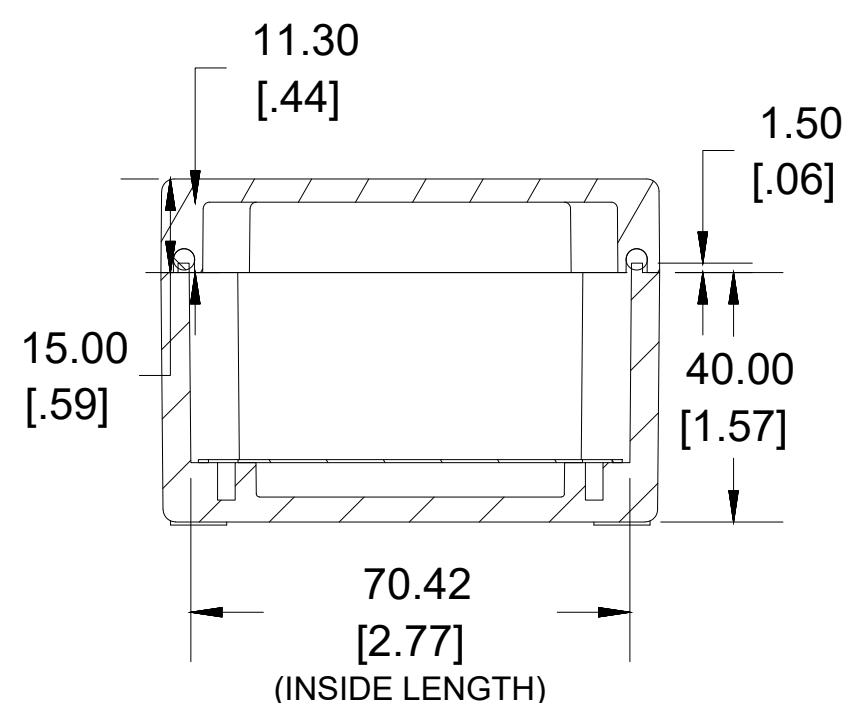
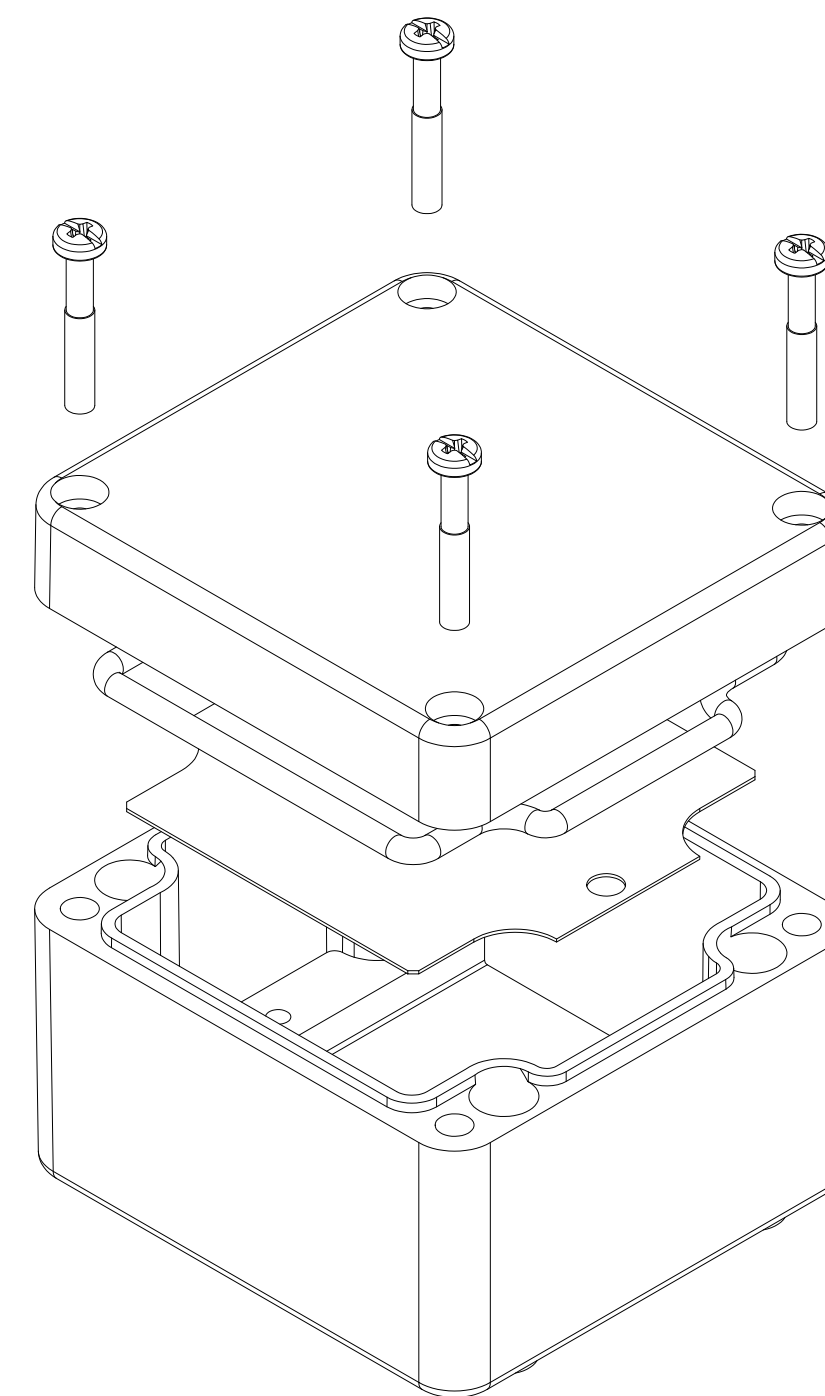


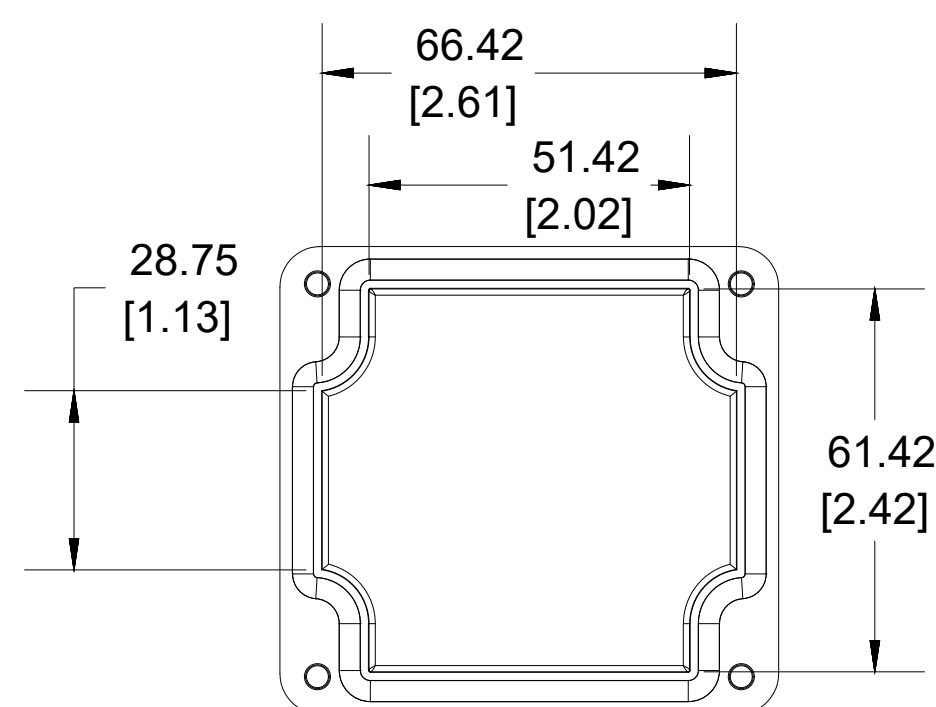
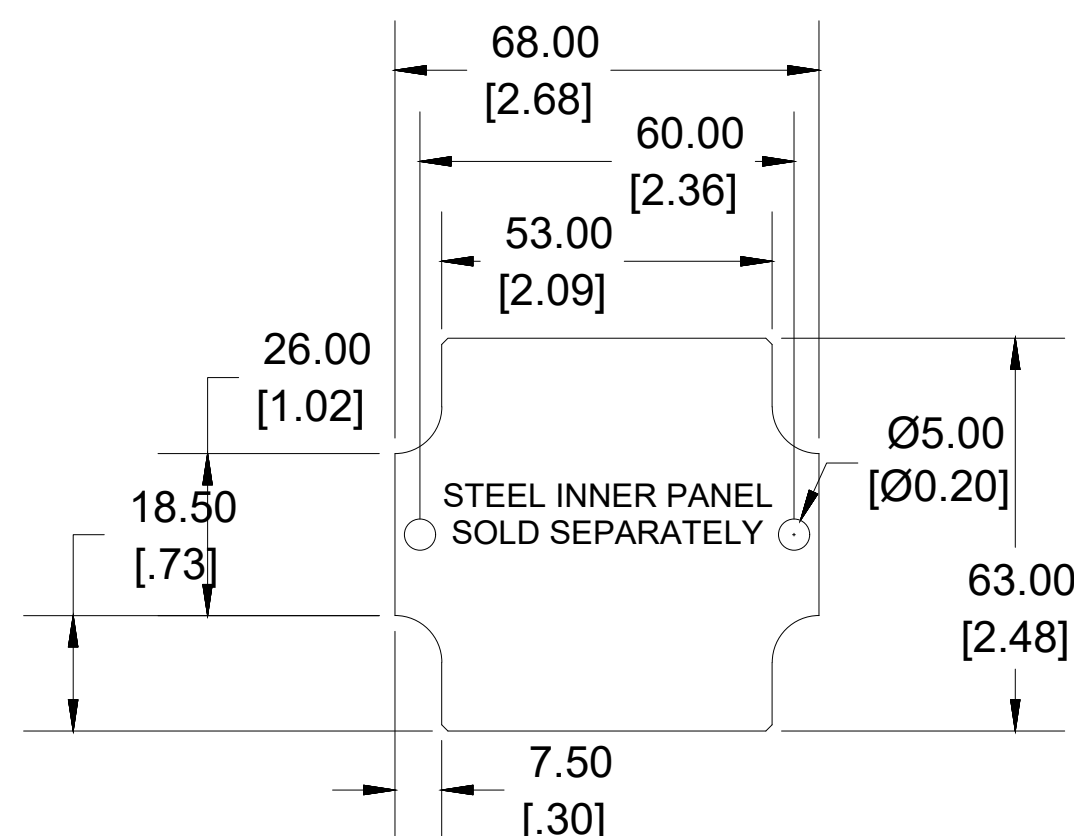
TOP VIEW



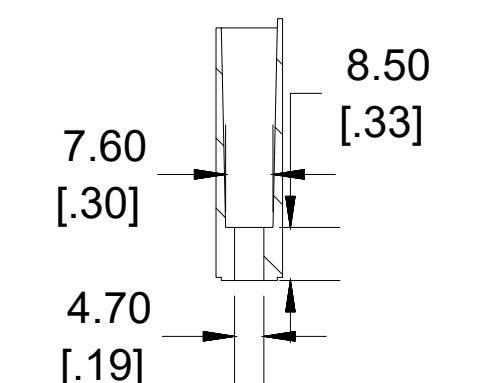
**SECTION B-B
END VIEW**



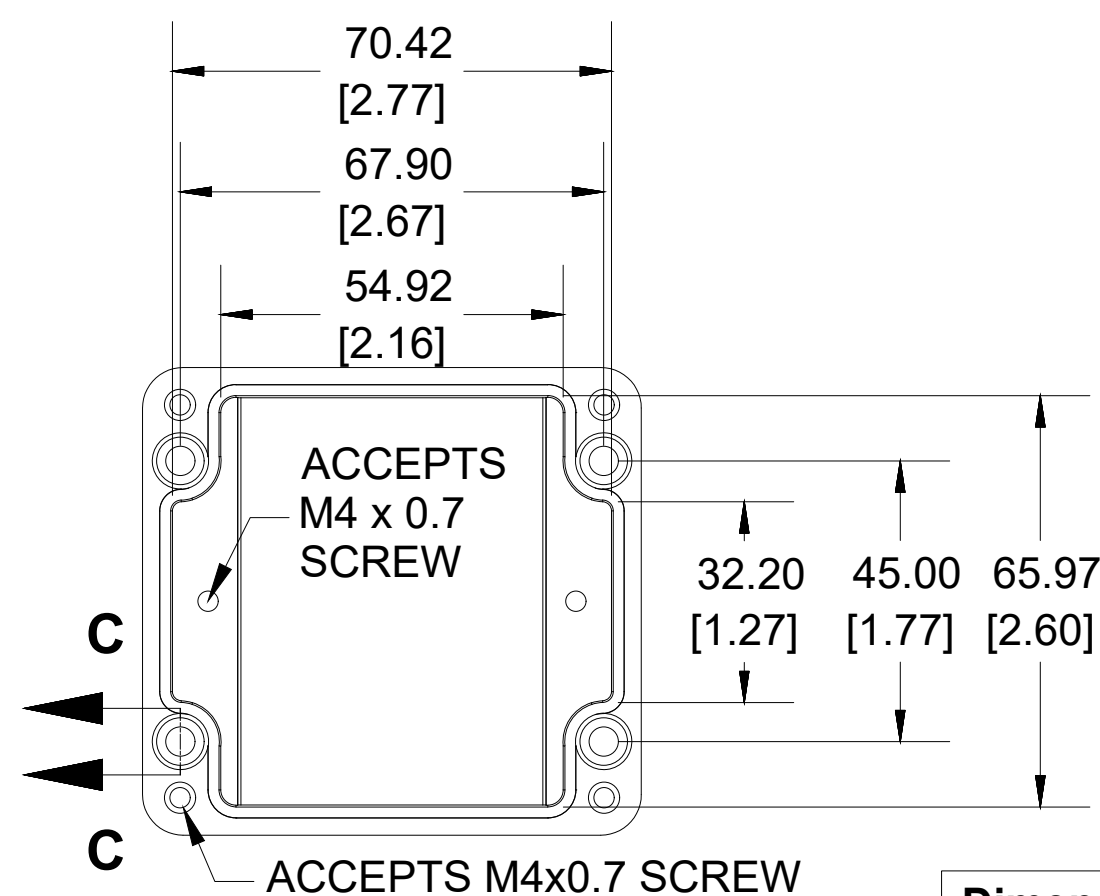
**SECTION A-A
SIDE VIEW**



INSIDE LID



**SECTION C-C
MOUNTING HOLE**



INSIDE BOX

Dimensions:
mm
[inches]



Enclosures can be Factory Modified (Milling, Drilling, Printing etc.)
Contact Factory mjm@hammondmfg.com for quotes
Solid models of this enclosure available in STEP or IGES.
(Part number and text placement/orientation on our products are subject to change,
we do not recommend using them as a locating reference for modification purposes)

NOTE

Purchased assembly includes Box, Lid, Gasket and 4 cover screws
Enclosure Molded from Glass Reinforced Polyester

Recommended cover screw torque 6-7.5 lbf.in (70-85 cN.m)

PART NUMBERS

1590ZGRP081 Enclosure

Grey Enclosure

1590ZGRP081

ACCESSORIES

Copper Ground Hardware (50 Pack)
[M4 - 0.7 X 6mm / M4 Washer]

SCGM4-50

Stainless Steel Cover Screw (50 Pack)
[M4 - 0.7 x 25mm]

SC583-50

Steel Inner Panel

1590ZGRP081PL

Hinge Kit (2 Pack)

1427HK

