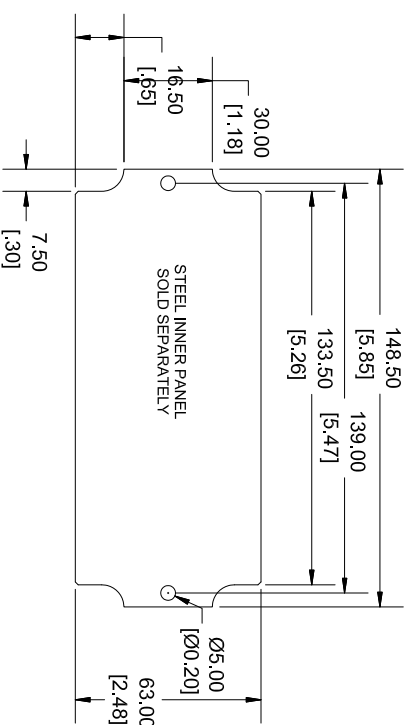
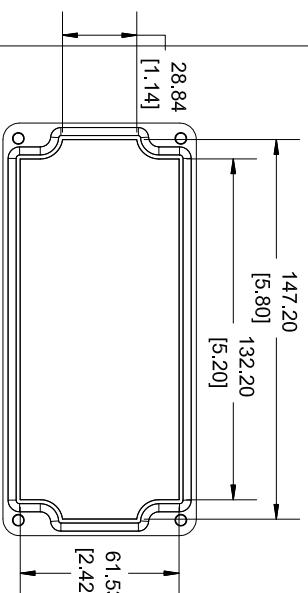


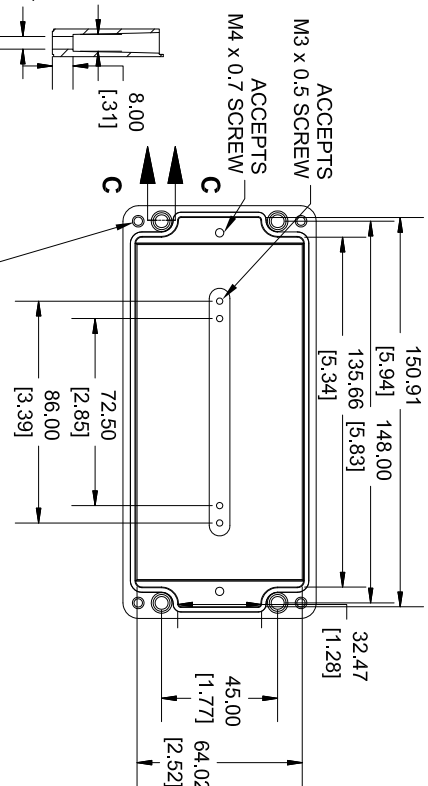
**SECTION A-A
SIDE VIEW**
(INSIDE LENGTH)



STEEL INNER PANEL
SOLD SEPARATELY



INSIDE LID



**SECTION C-C
MOUNTING HOLES**
INSIDE BOX

NOTE

Purchased assembly includes Box, Lid, Gasket and 4 cover screws
Enclosure Molded from Glass Reinforced Polyester
Recommended cover screw torque 8.8-13.3 lbf in (100-150 cN.m)

PART NUMBERS	
Black Enclosure	1590ZGRP083BK
ACCESSORIES	
Copper Ground Hardware (50 Pack) [M4 - 0.7 X 6mm / M4 Washer]	SCGM4-50
Stainless Steel Cover Screw (50 Pack) [M4 - 0.7 X 25mm]	SCS83-50
Steel Inner Panel	1590ZGRP083FL
Hinge Kit Black (2 Pack)	1427HK-BK



Solid models of this enclosure available in .stp or .x_t
(Part number and lead placement/orientation on our products are subject to change,
we do not recommend using them as a locating reference for modification purposes)

Dimensions:
mm
[inches]

HAMMOND
MANUFACTURING®
1590ZGRP083BK
www.hammondmfg.com