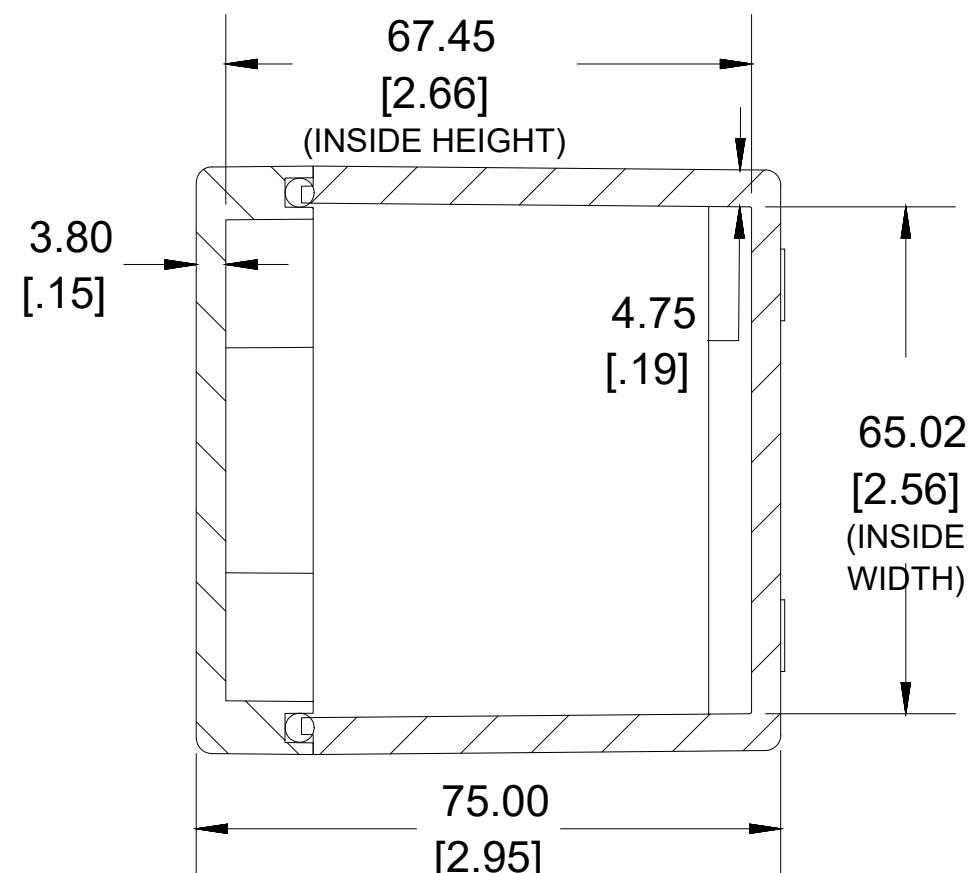
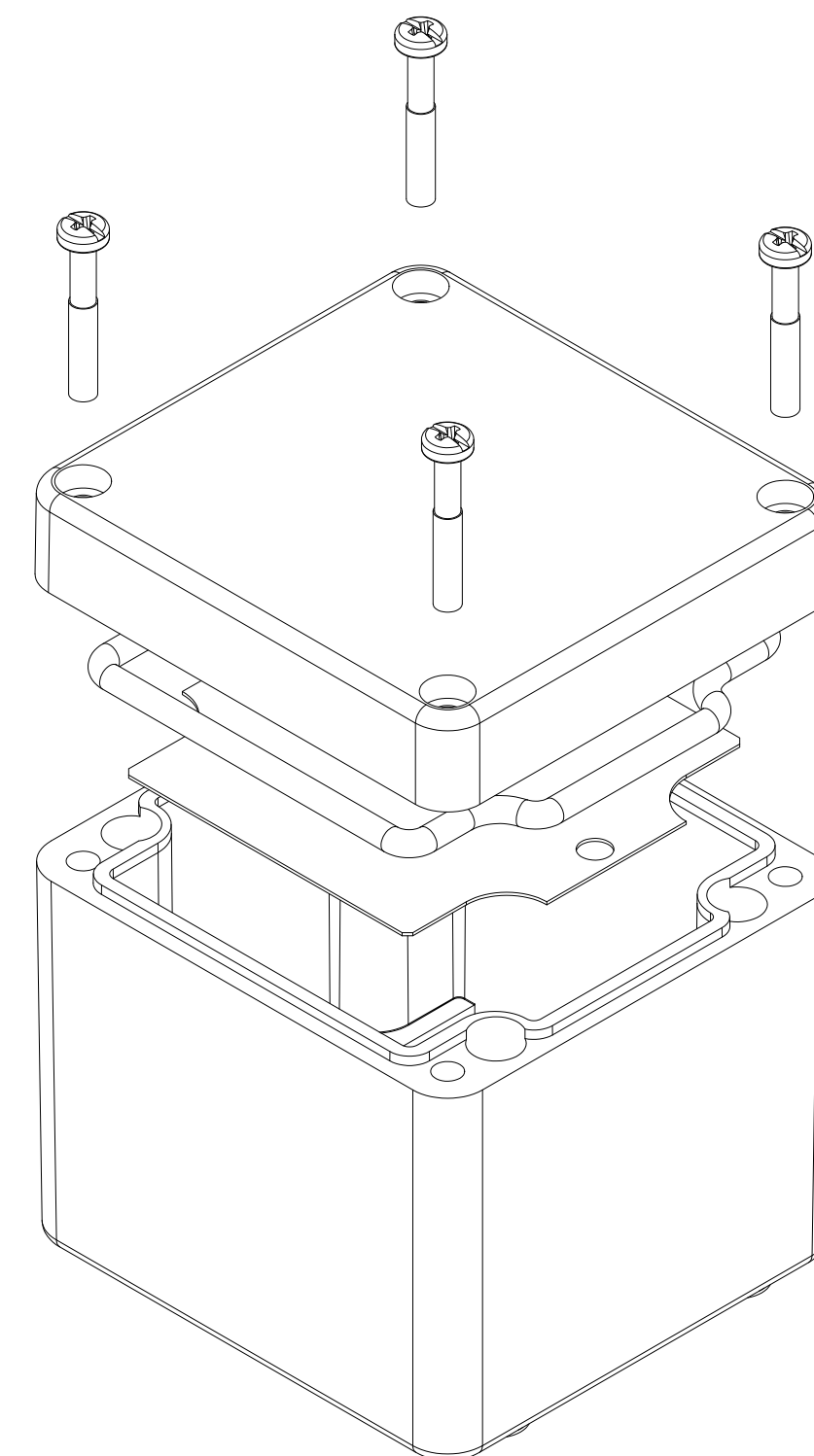


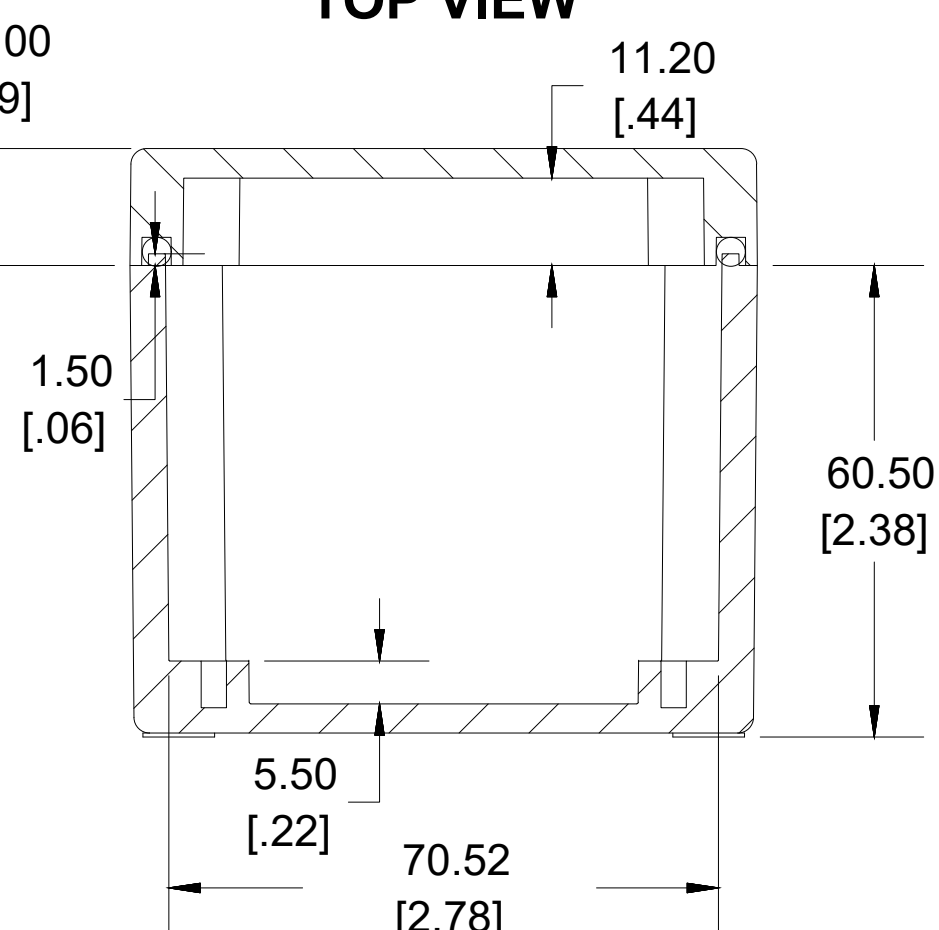
TOP VIEW



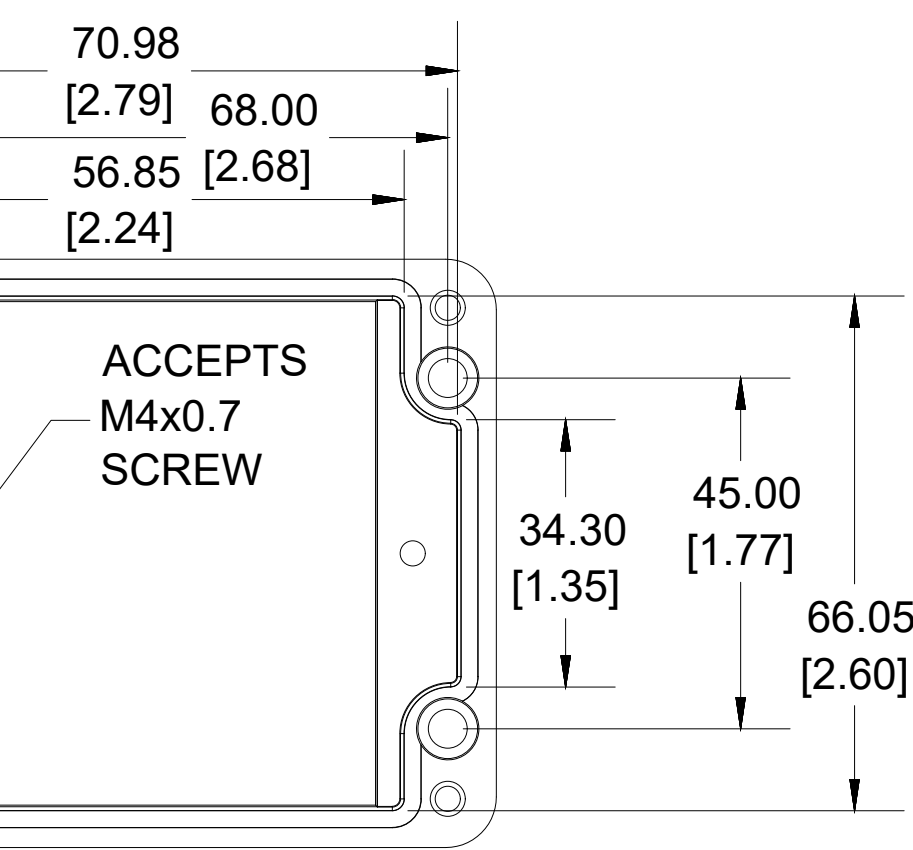
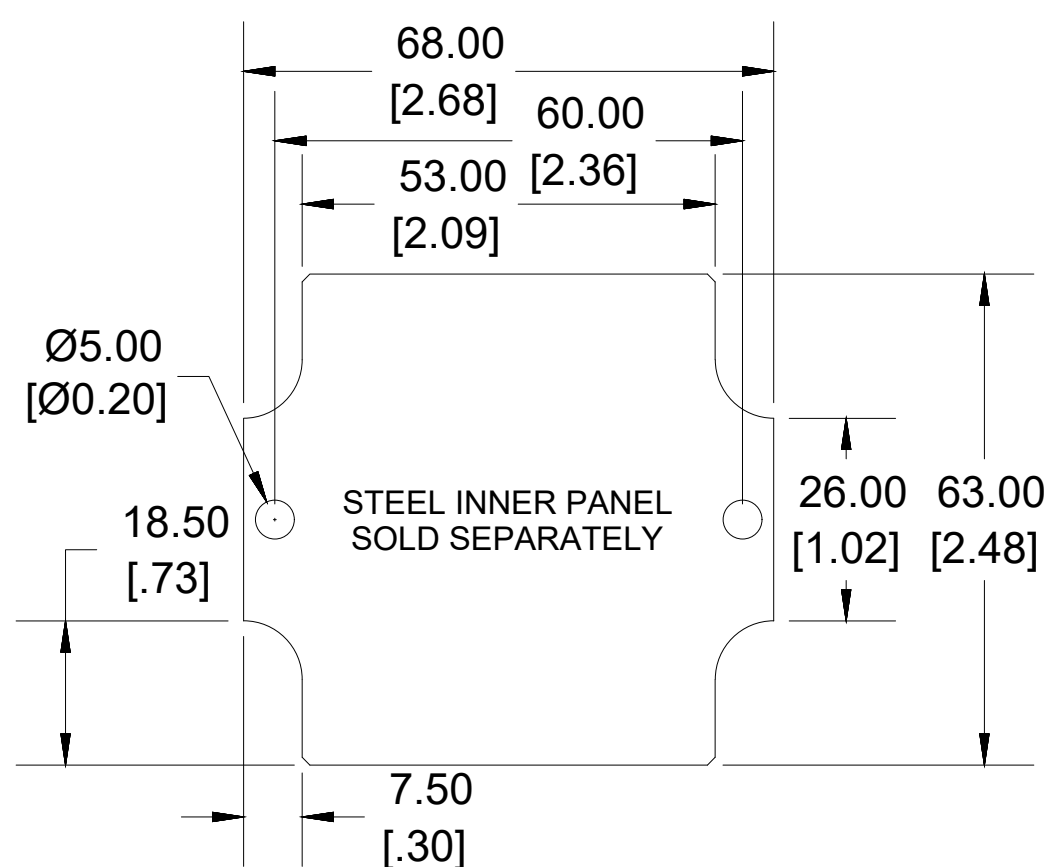
**SECTION B-B
END VIEW**



Enclosures can be Factory Modified (Milling, Drilling, Printing etc.)
 Contact Factory mjm@hammondmfg.com for quotes
 Solid models of this enclosure available in STEP or IGES.
 (Part number and text placement/orientation on our products are subject to change,
 we do not recommend using them as a locating reference for modification purposes)



**SECTION A-A
SIDE VIEW**



INSIDE BOX

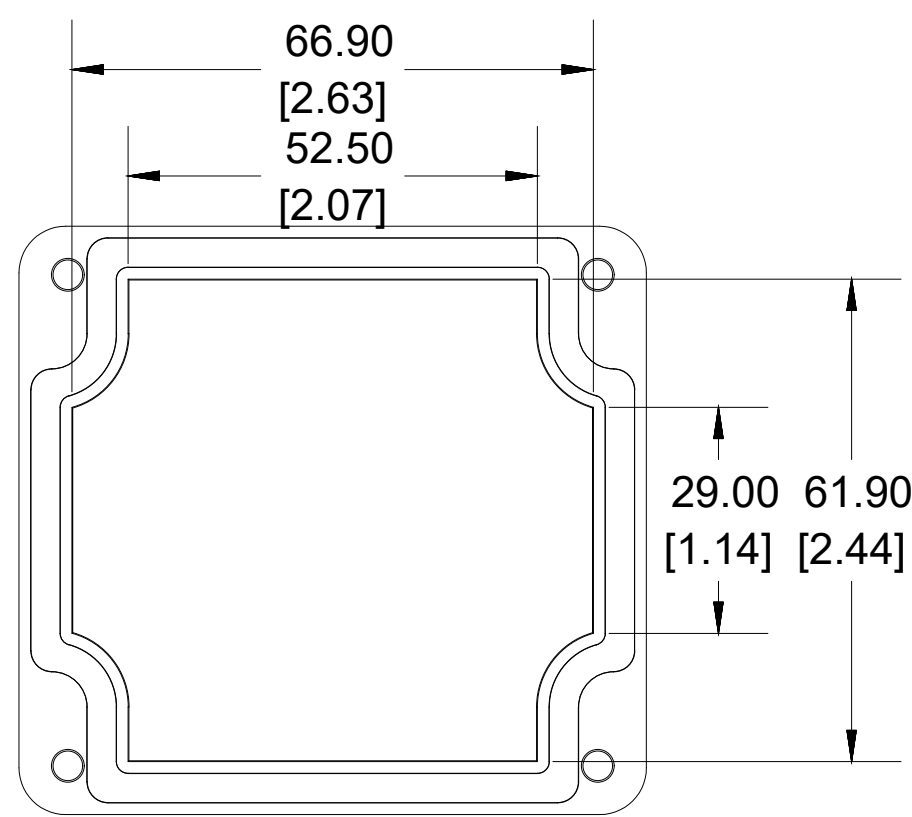
Dimensions:
mm
[inches]

| NOTE | |
|--|---------------|
| Purchased assembly includes Box, Lid, Gasket and 4 cover screws | |
| Enclosure Molded from Glass Reinforced Polyester | |
| Recommended cover screw torque 6-7.5 lbf.in (70-85 cN.m) | |
| PART NUMBERS | |
| 1590ZGRP084 Enclosure | |
| Grey Enclosure | 1590ZGRP084 |
| ACCESSORIES | |
| Copper Ground Hardware (50 Pack) [M4 - 0.7 X 6mm / M4 Washer] | SCGM4-50 |
| Stainless Steel Cover Screw (50 Pack) [M4 - 0.7 x 25mm] | SC583-50 |
| Steel Inner Panel | 1590ZGRP081PL |
| Hinge Kit (2 Pack) | 1427HK |

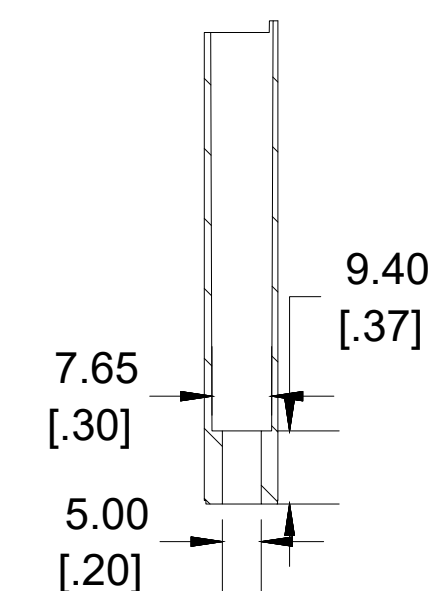
**HAMMOND
MANUFACTURING®**

1590ZGRP084

www.hammondmfg.com



INSIDE LID



**SECTION D-D
MOUNTING HOLE**