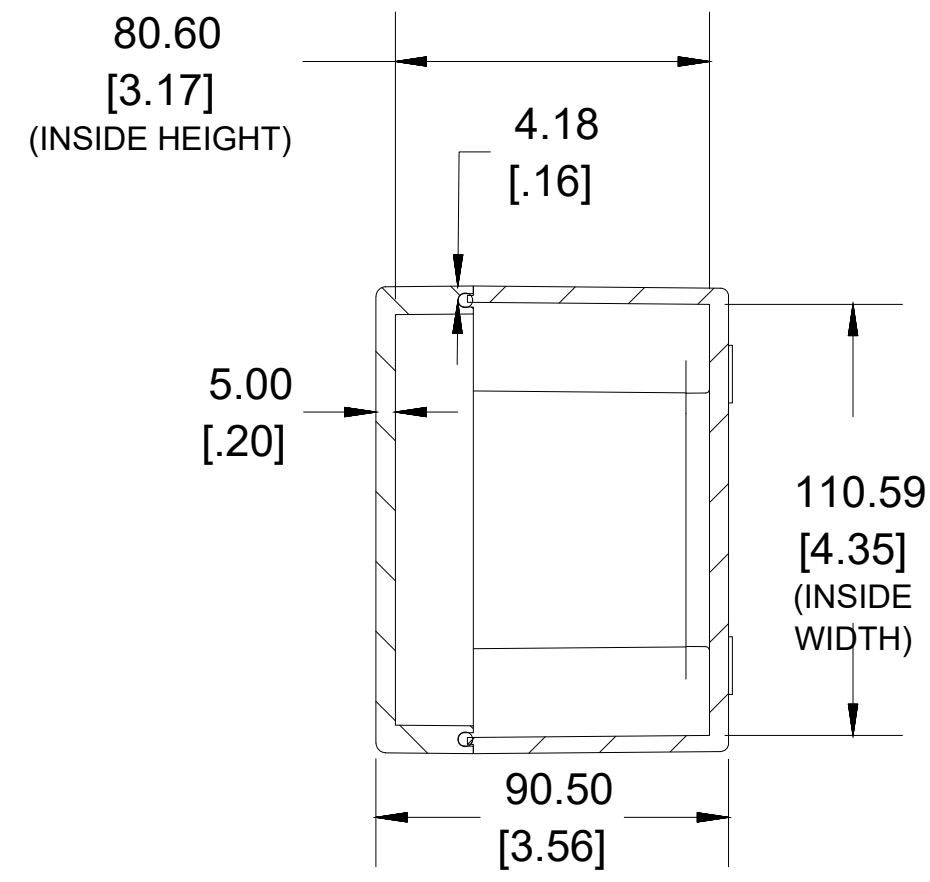
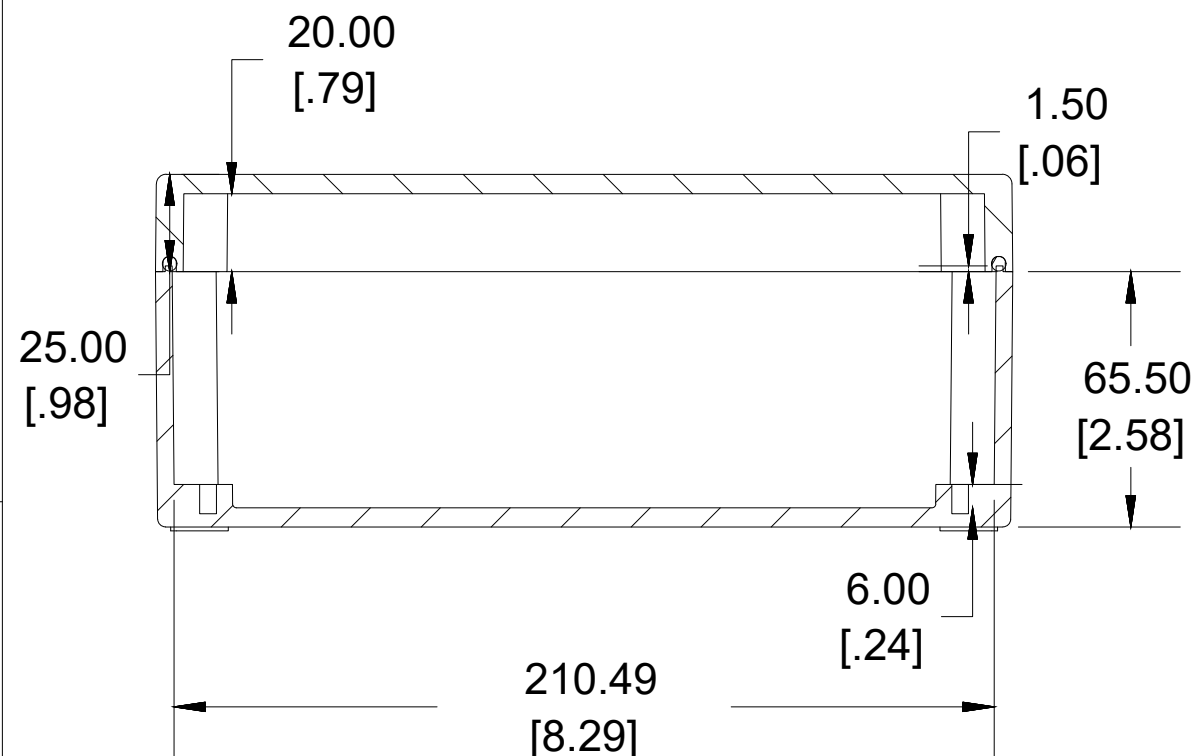
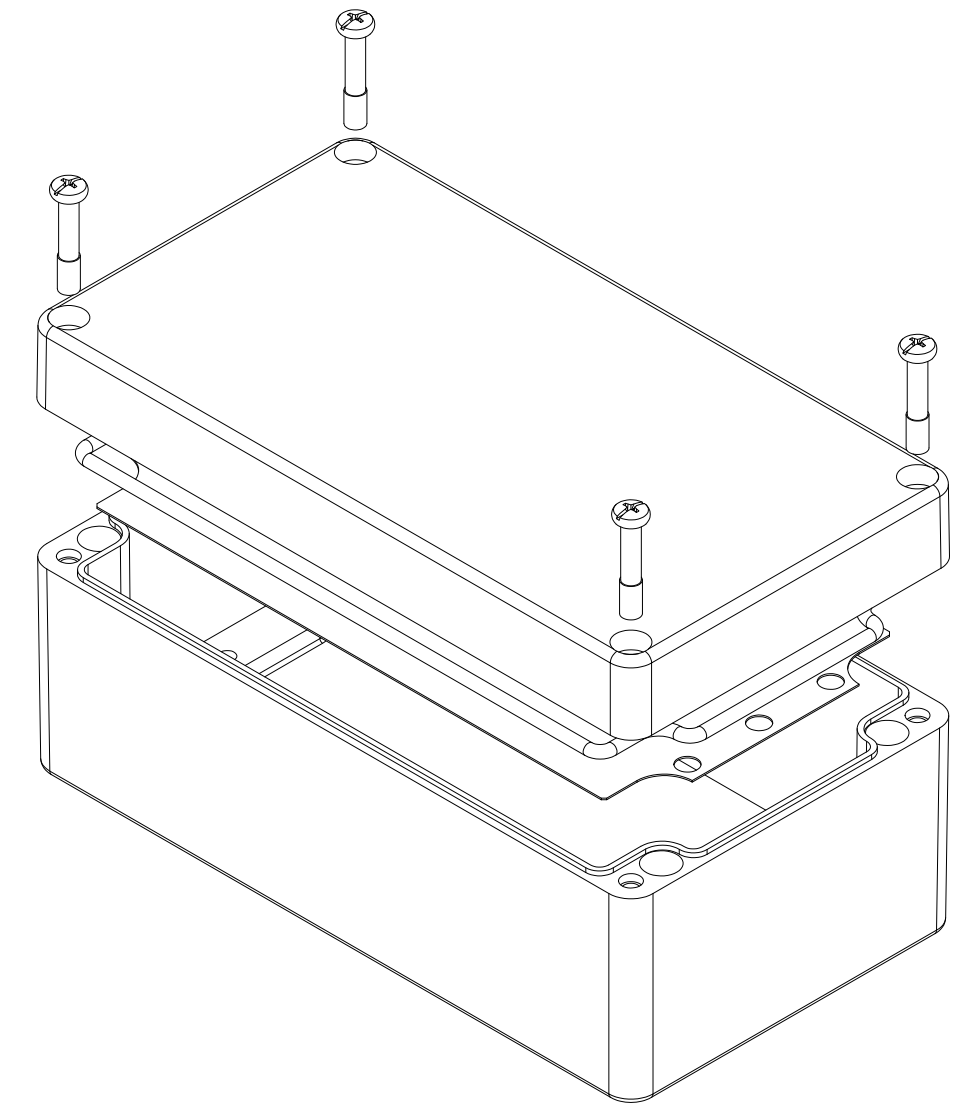


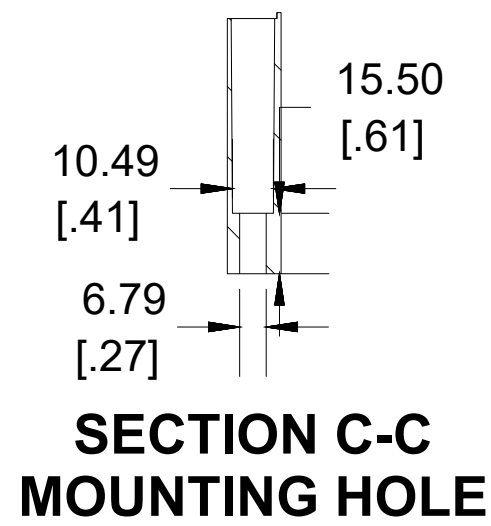
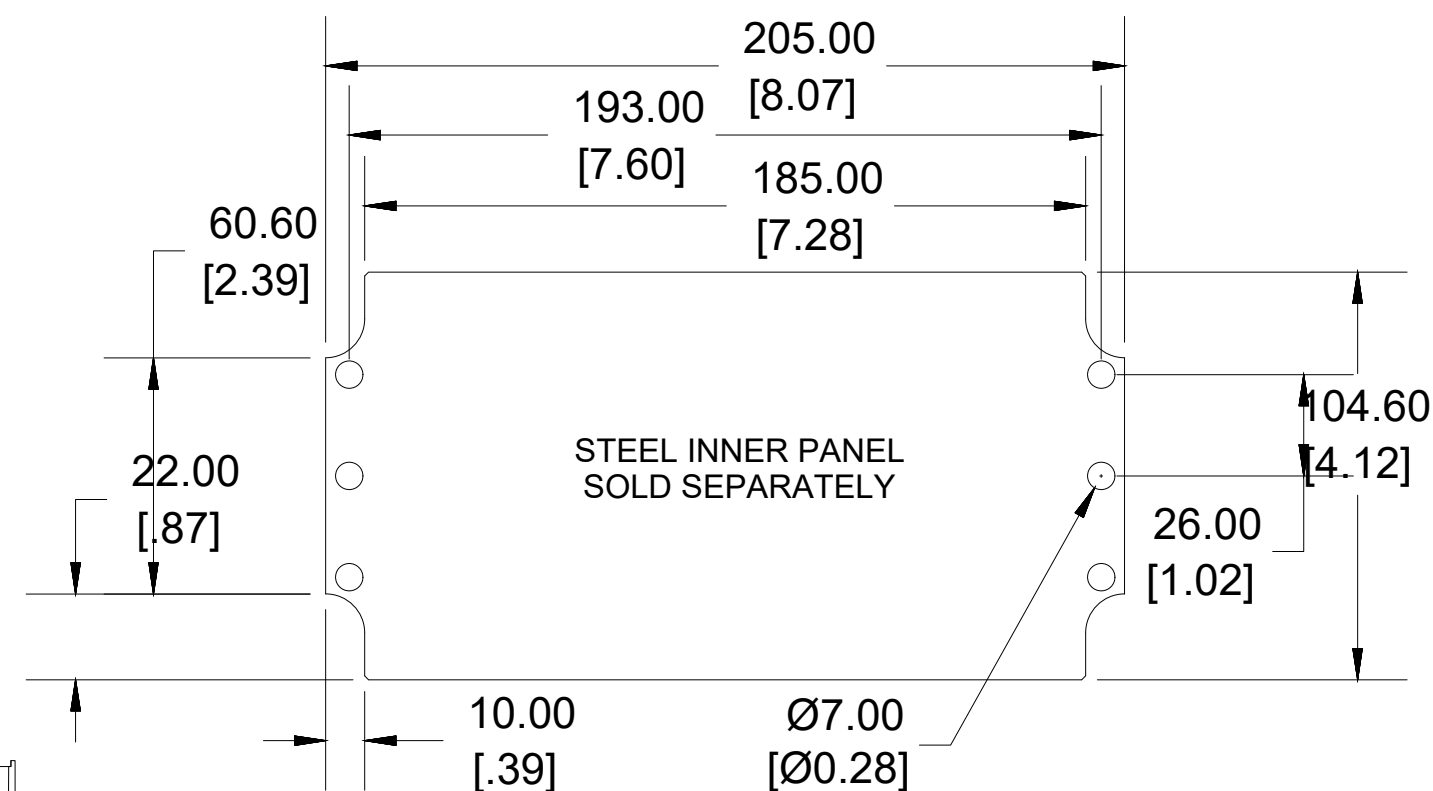
**TOP VIEW**



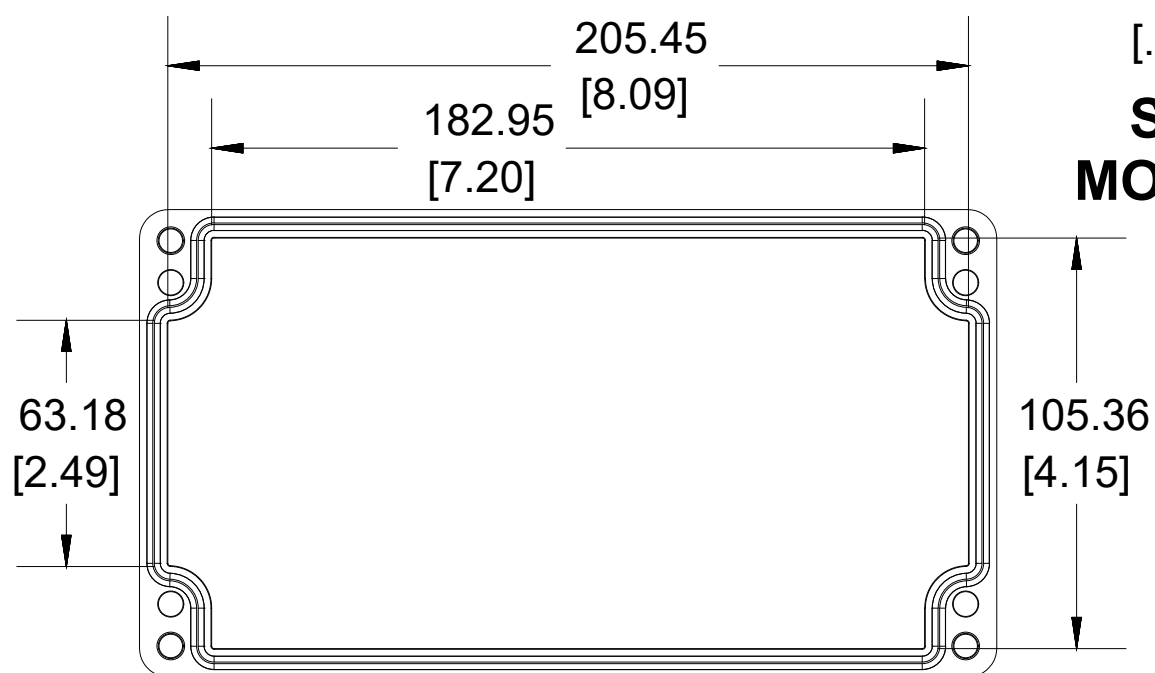
**SECTION B-B  
END VIEW**



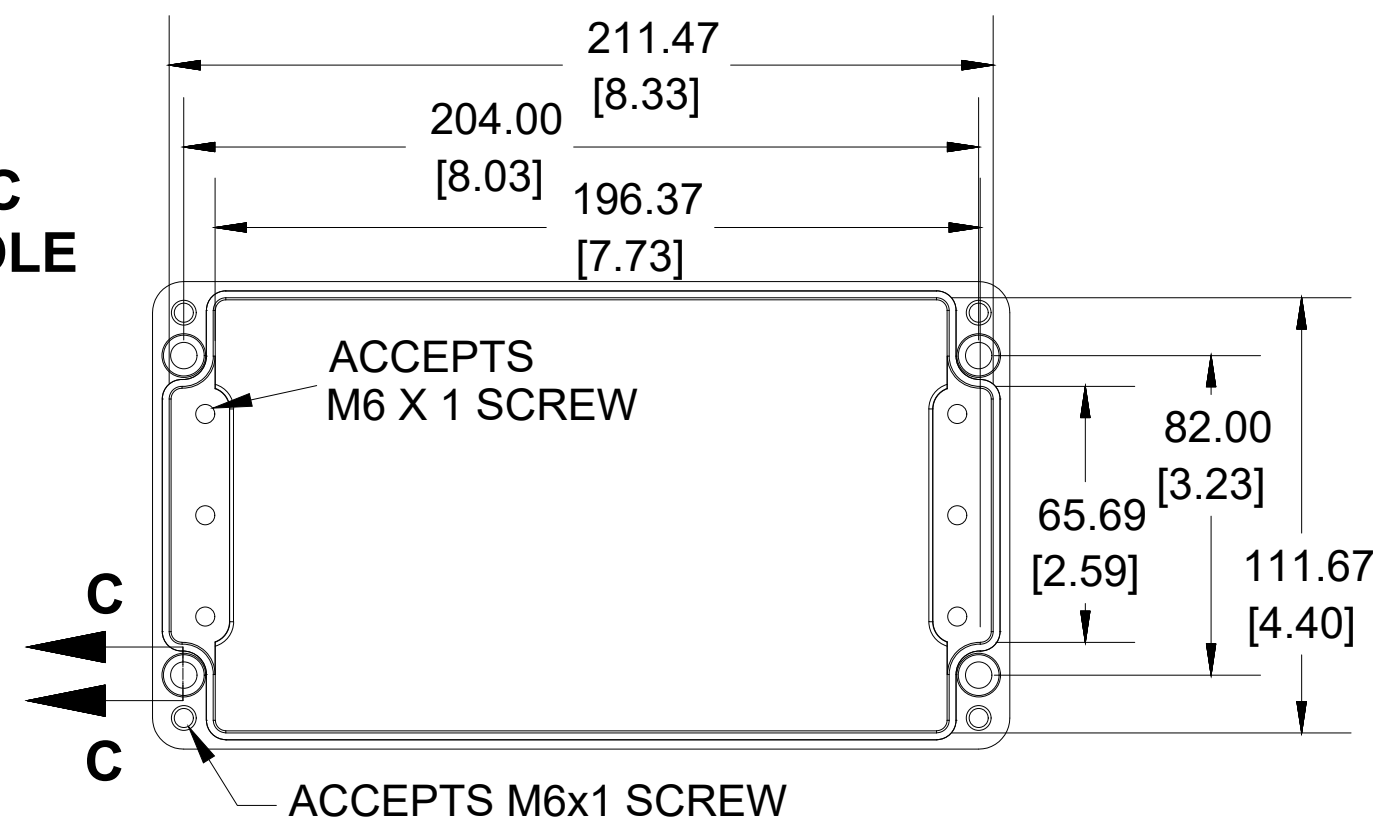
**SECTION A-A  
SIDE VIEW**



**SECTION C-C  
MOUNTING HOLE**



**INSIDE LID**



**INSIDE BOX**

Dimensions:  
mm  
[inches]



Enclosures can be Factory Modified ( Milling, Drilling, Printing etc.)  
Contact Factory [mjm@hammondmfg.com](mailto:mjm@hammondmfg.com) for quotes  
Solid models of this enclosure available in STEP or IGES.  
(Part number and text placement/orientation on our products are subject to change,  
we do not recommend using them as a locating reference for modification purposes)

| NOTE   |               |
|--|---------------|
| Purchased assembly includes Box, Lid, Gasket and 4 cover screws  |               |
| Enclosure Molded from Glass Reinforced Polyester                 |               |
| Recommended cover screw torque 8-9.5 lbf.in (90-110 cN.m)        |               |
| PART NUMBERS   |               |
| 1590ZGRP123 Enclosure  |               |
| Grey Enclosure   | 1590ZGRP123   |
| ACCESSORIES  |               |
| Copper Ground Hardware (20 Pack)<br>[M6 - 1.0 X 6mm / M6 Washer] | SCGM6GRP-20   |
| Stainless Steel Cover Screw (20 Pack)<br>[M6 - 1.0 x 30mm]       | SC570-20      |
| Steel Inner Panel  | 1590ZGRP123PL |
| Hinge Kit (2 Pack)   | 1427HK        |




**HAMMOND  
MANUFACTURING®**

**1590ZGRP123**

[www.hammondmfg.com](http://www.hammondmfg.com)