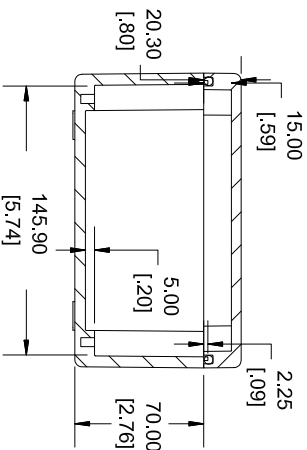
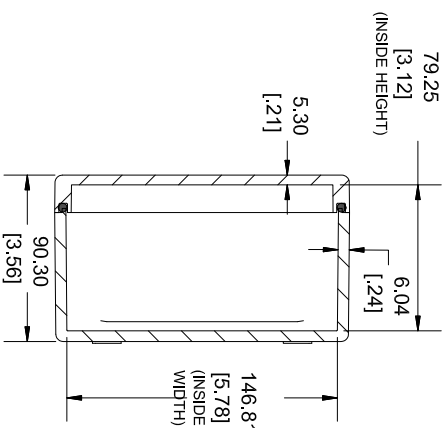


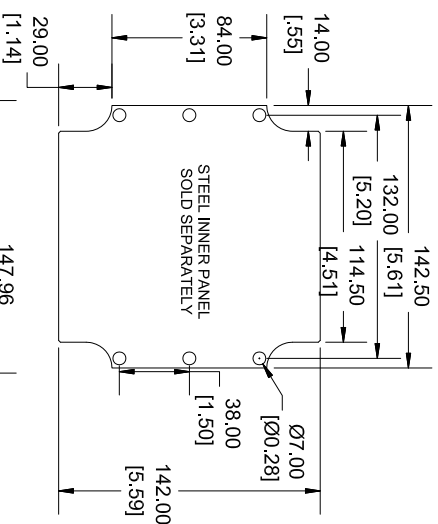
TOP VIEW



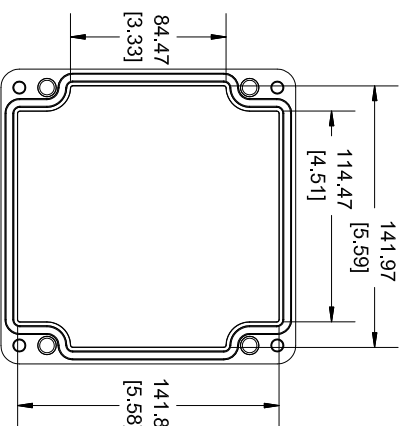
**SECTION A-A
SIDE VIEW**
(INSIDE LENGTH)



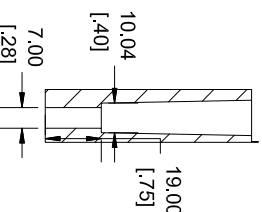
**SECTION B-B
END VIEW**



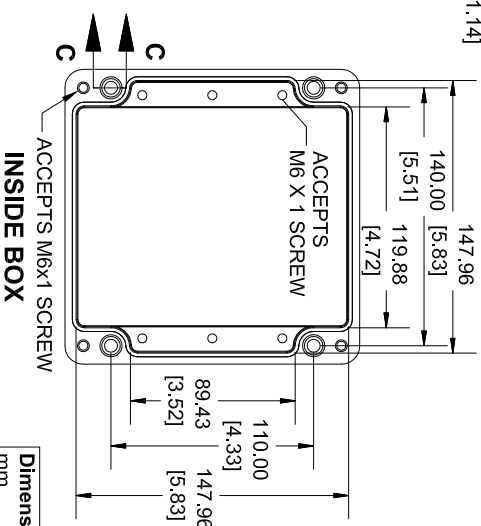
STEEL INNER PANEL
SOLD SEPARATELY



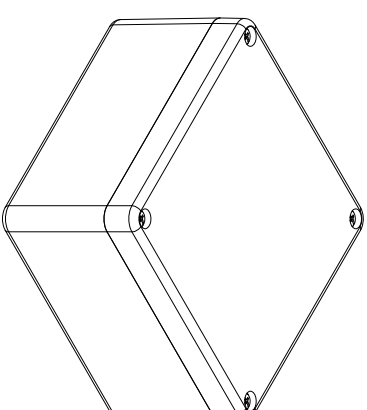
INSIDE LID



**SECTION C-C
MOUNTING HOLE**



INSIDE BOX



Solid models of this enclosure available in .stp or .x_t
(Part number and text placement orientation on our products are subject to change.
we do not recommend using them as a modeling reference for modification purposes)

NOTE

Purchased assembly includes Box, Lid, Gasket and 4 cover screws
Enclosure Moulded from Glass Reinforced Polyester

Recommended cover screw torque 13.3-17.7 lbf.in (150-200 cN.m)

PART NUMBERS	
1590ZGRP161 Enclosure	1590ZGRP161BK
ACCESSORIES	
Copper Ground Hardware (20 Pack) [M6 - 1.0 X 6mm / M6 Washer]	SCGM6GRP-20
Stainless Steel Cover Screw (20 Pack) [M6 - 1.0 x 30mm]	SCS70-20
Steel Inner Panel	1590ZGRP161PL
Hinge Kit Black (2 Pack)	1427HKBK



HAMMOND
MANUFACTURING®
1590ZGRP161BK

www.hammondmtg.com

17.11.2020

Dimensions:
mm
[inches]