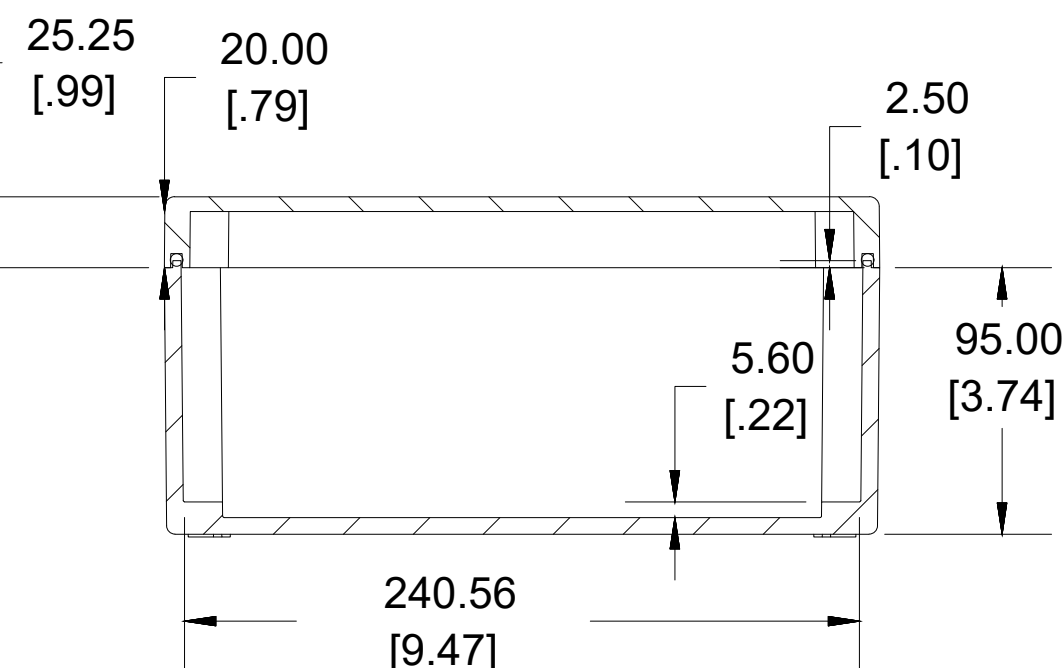
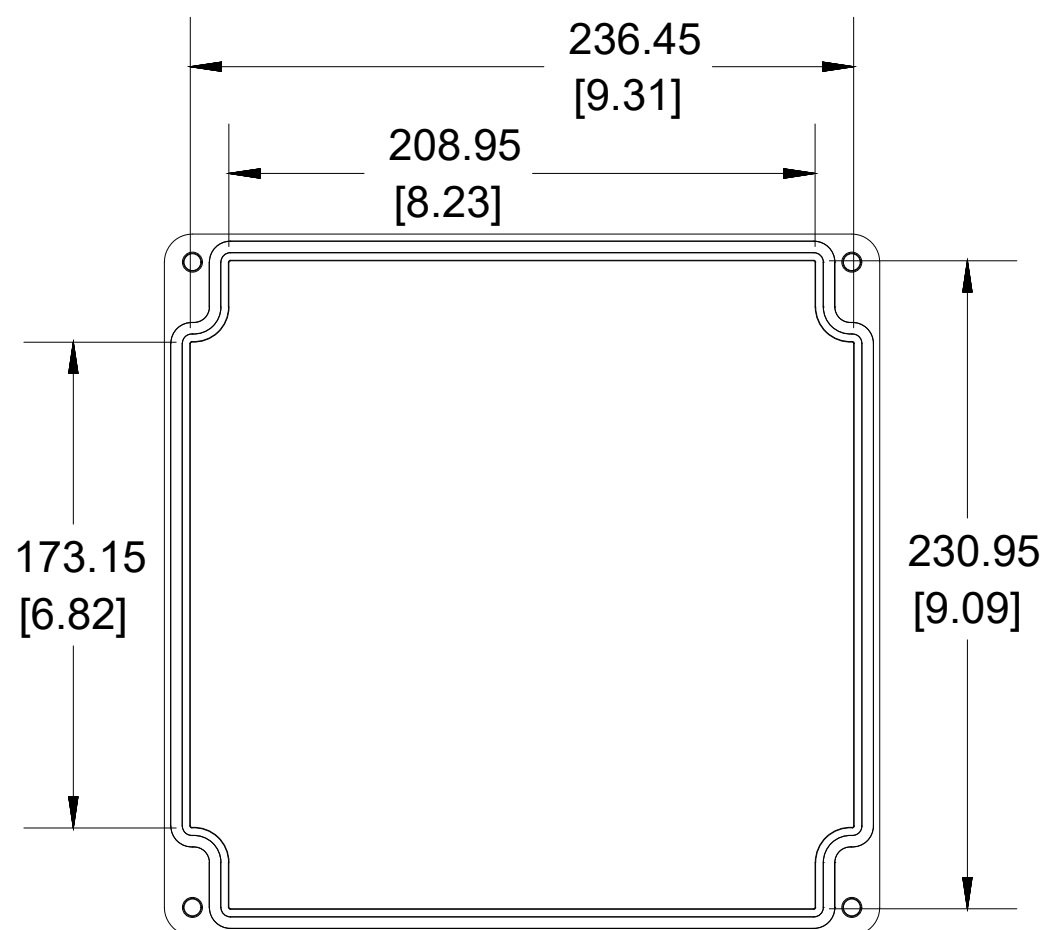


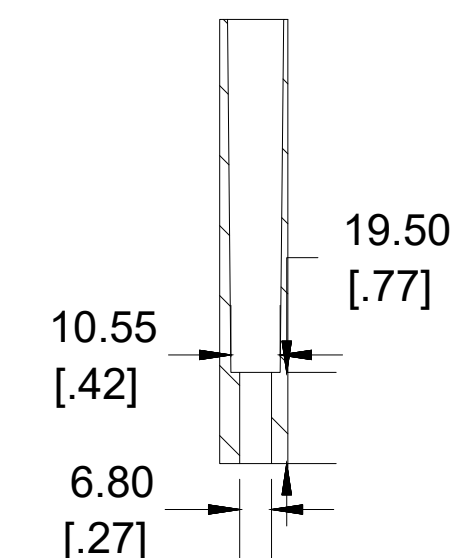
TOP VIEW



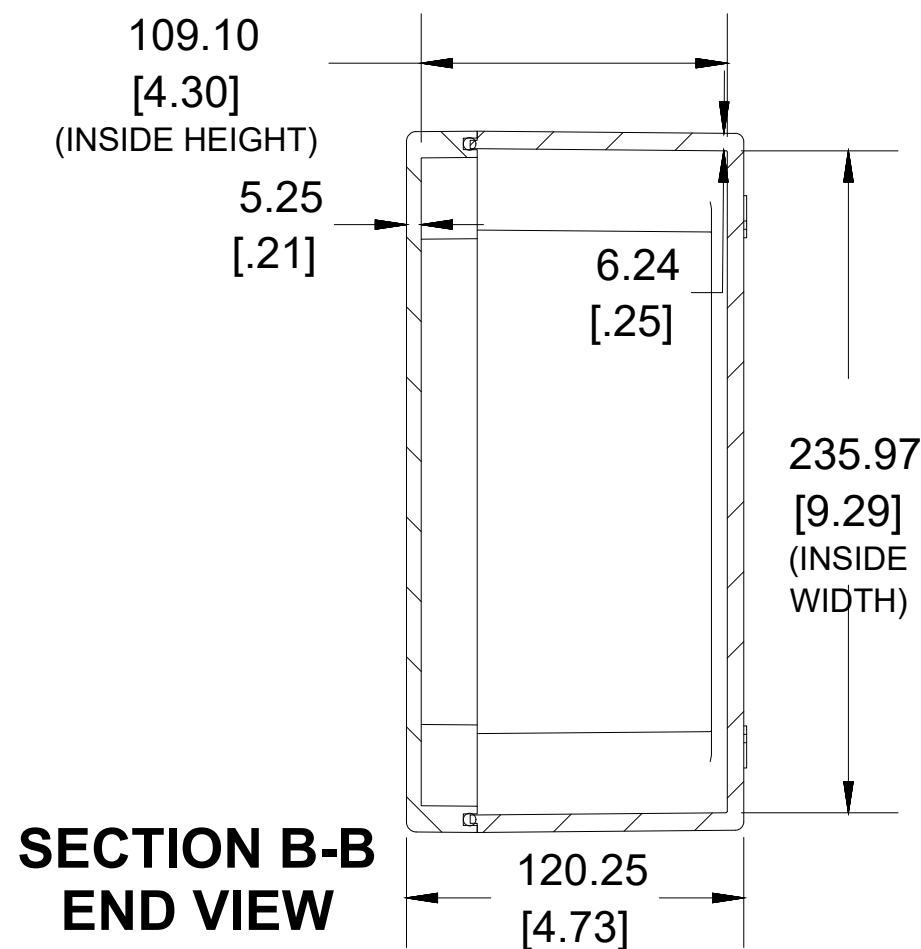
**SECTION A-A
SIDE VIEW**



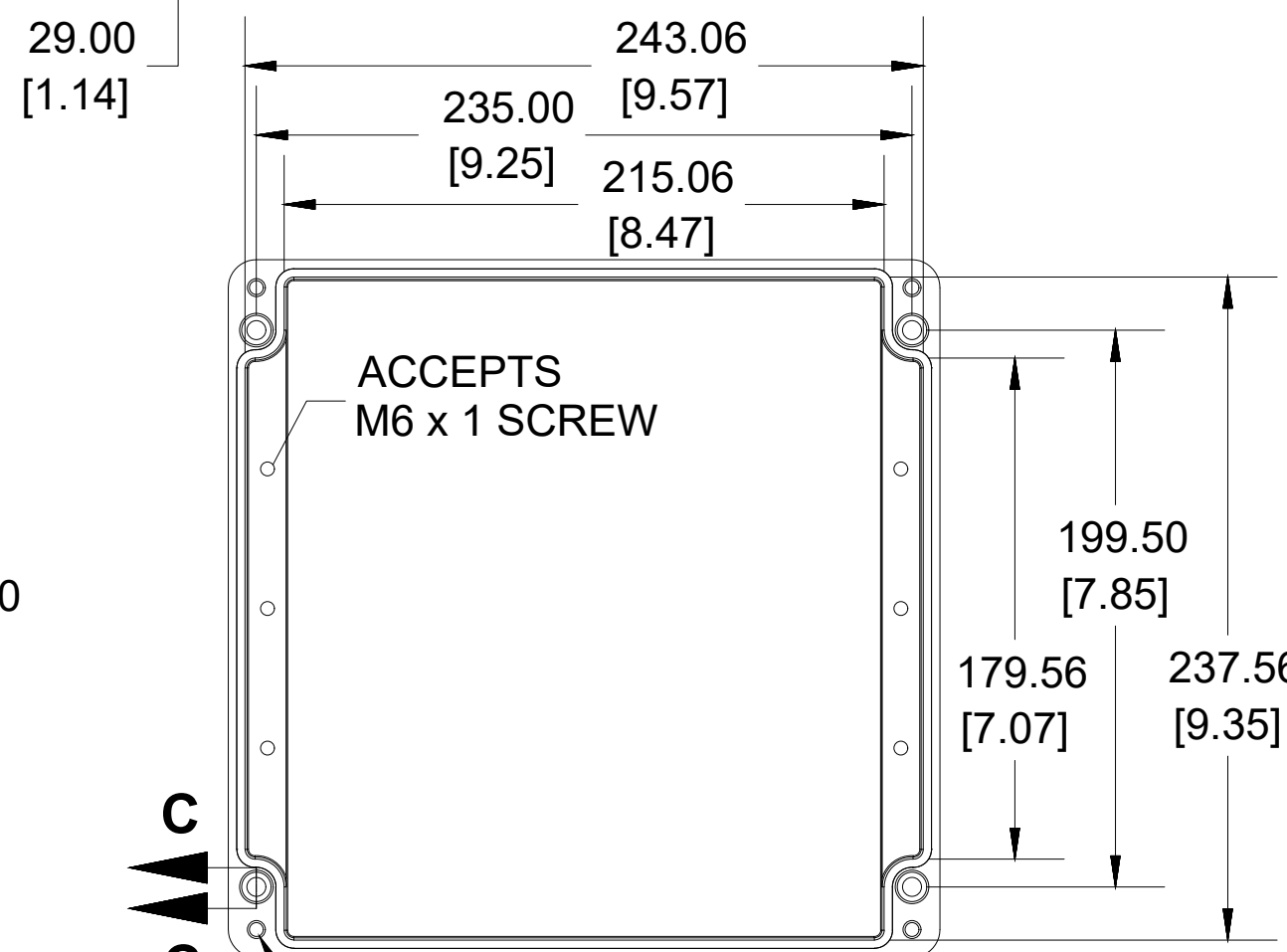
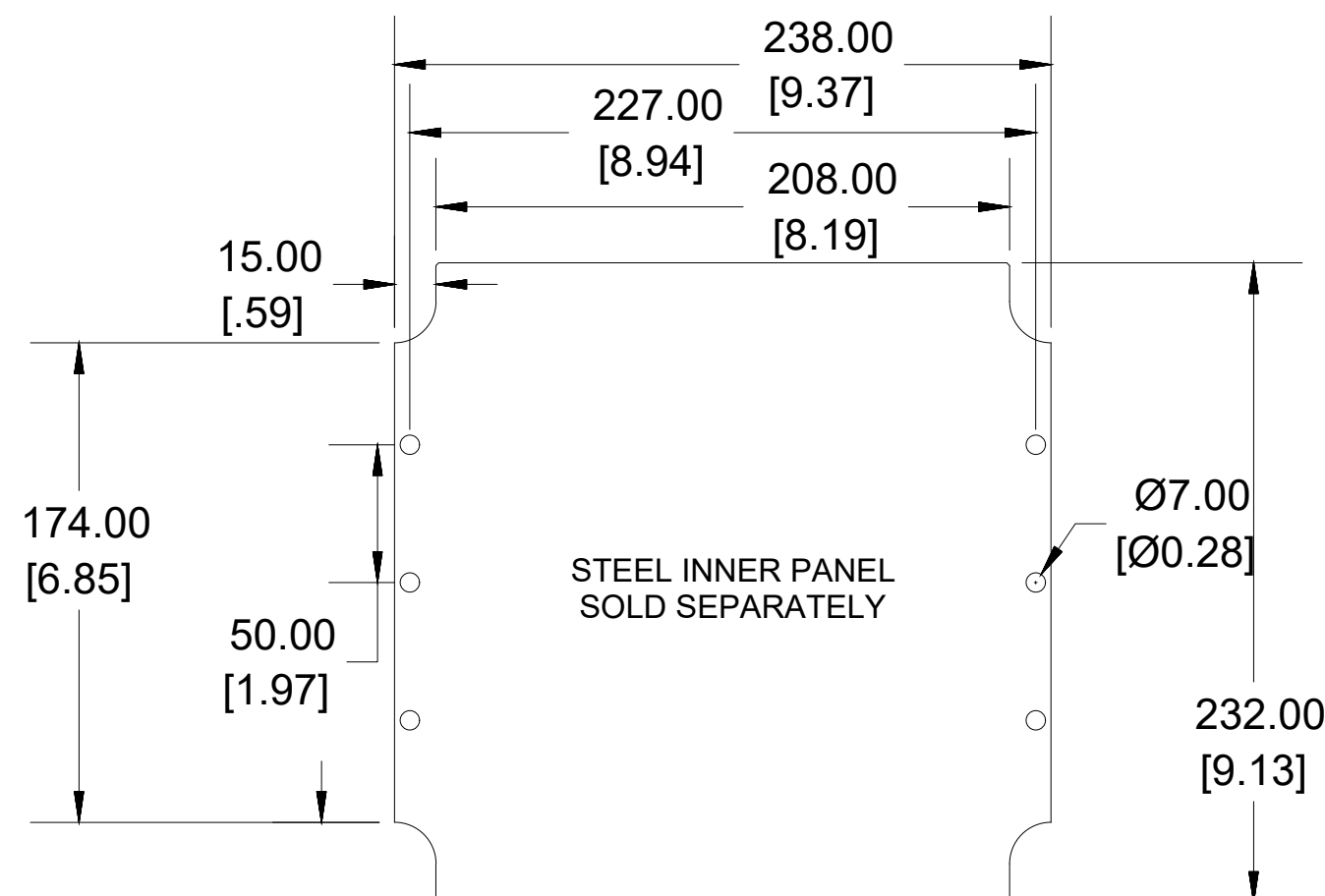
INSIDE LID



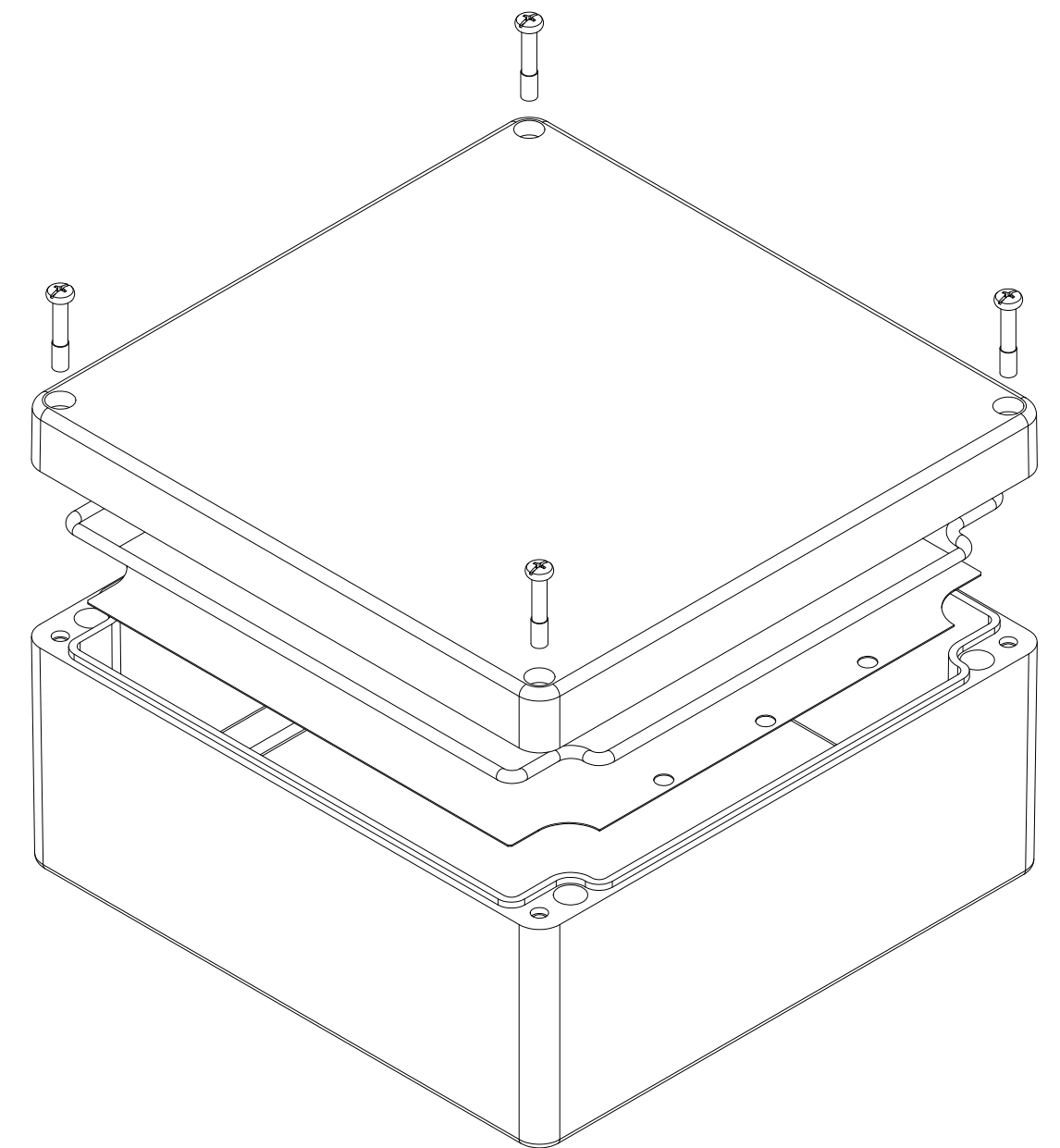
**SECTION C-C
MOUNTING HOLE**



**SECTION B-B
END VIEW**



INSIDE BOX



Enclosures can be Factory Modified (Milling, Drilling, Printing etc.)
 Contact Factory mjm@hammondmfg.com for quotes
 Solid models of this enclosure available in STEP or IGES.
 (Part number and text placement/orientation on our products are subject to change,
 we do not recommend using them as a locating reference for modification purposes)

NOTE

Purchased assembly includes Box, Lid, Gasket and 4 cover screws
 Enclosure Molded from Glass Reinforced Polyester

Recommended cover screw torque 8-9.5 lbf.in (90-110 cN.m)

PART NUMBERS

1590ZGRP234 Enclosure

Grey Enclosure

1590ZGRP234

ACCESSORIES

Copper Ground Hardware (20 Pack)
 [M6 - 1.0 X 6mm / M6 Washer]

SCGM6GRP-20

Stainless Steel Cover Screw (20 Pack)
 [M6 - 1.0 x 30mm]

SC570-20

Steel Inner Panel

1590ZGRP234PL

Hinge Kit (2 Pack)

1427HK



Dimensions:
 mm
 [inches]