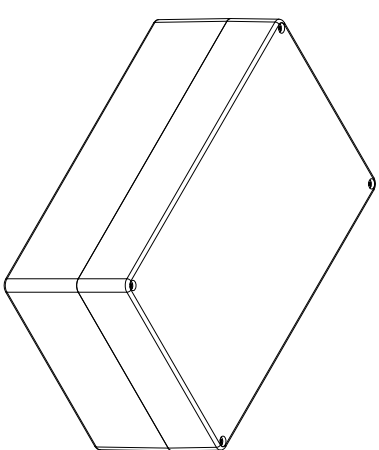
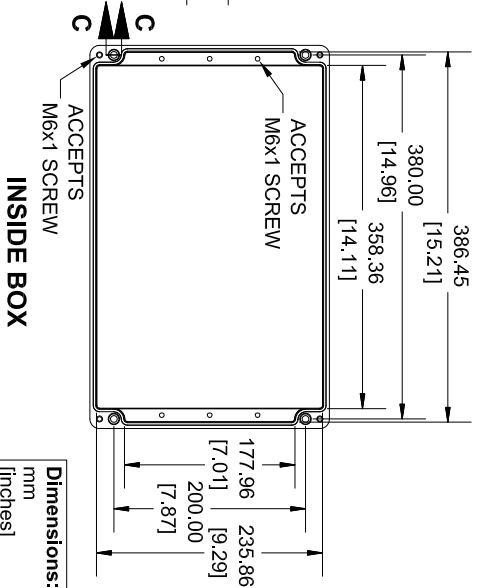
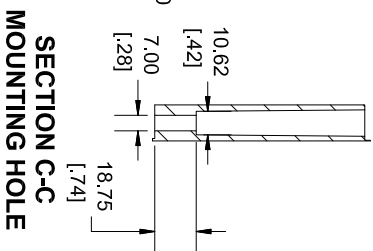
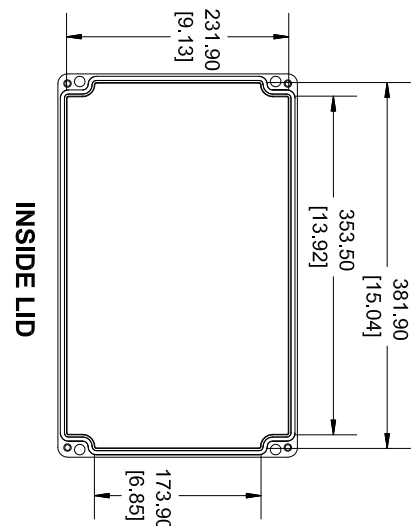
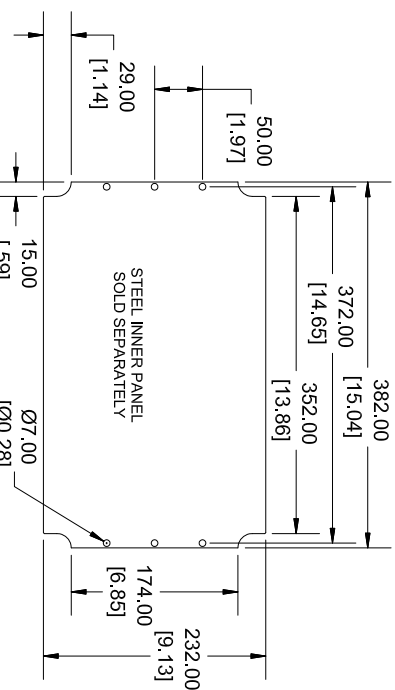
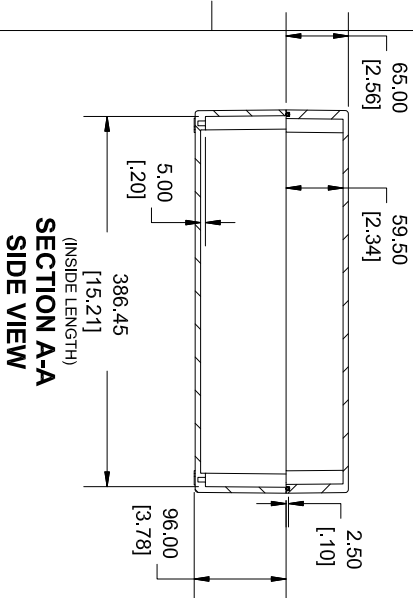
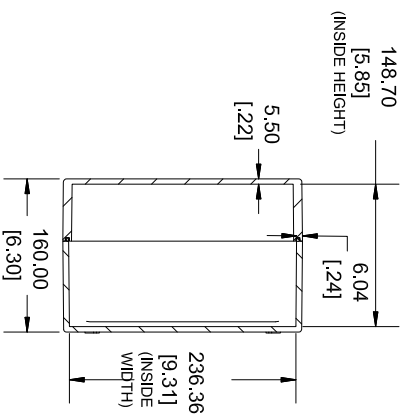


**SECTION B-B
END VIEW**



Solid models of this enclosure available in .stp or .x_t
(Part number and text placement/orientation on our products are subject to change.
We do not recommend using them as a locating reference for modification purposes)

NOTE	
Purchased assembly includes Box, Lid, Gasket and 4 cover screws	
Enclosure Molded from Glass Reinforced Polyester	
Recommended cover screw torque 13.3-17.7 lbf in (150-200 cN.m)	

PART NUMBERS	
1590ZGRP244 Enclosure	1590ZGRP244BK
ACCESSORIES	
Copper Ground Hardware (20 Pack) [M6 - 1.0 X 6mm / M6 Washer]	SCGW6GRP-20
Stainless Steel Cover Screw (12 Pack) [M6 - 1.0 X 70mm]	SC571-12
Steel Inner Panel	1590ZGRP243PL
Hinge Kit Black (2 Pack)	1427HKBK



HAMMOND
MANUFACTURING®
1590ZGRP244BK

www.hammondmtg.com

Dimensions:
mm
[inches]