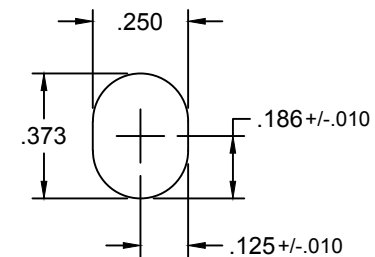


DETAIL A
2 PLACES
SCALE=NONE



DETAIL B
2 PLACES
SCALE=NONE

NOTES:

1. MATERIAL: TYPE 3003 ALUMINUM, 0.063 THICK
2. FINISH: MILL FINISH
3. PANEL TO BE SUPPLIED WITH PROTECTIVE PVC FILM ON ONE SIDE.

					<div><div>TC</div><div>INTGRA</div><div>ENCLOSURE</div></div> 7700 TYLER BLVD UNITON, OHIO 44002-280-0000 NEW INDUSTRIES FAX (440) 280-2800				
					SCALE: SHEET: 1 of 1 DRAWN BY: W.TIDWELL				
					TITLE: BACK PANEL, 6 X 6, ALUMINUM				
					DATE: 02.13.14 DRAWN: 9912581-67-10				
					REV: 02.13.14				
					REV: 02.13.14				
					REV: 02.13.14				
					REV: 02.13.14				
					REV: 02.13.14				
					REV: 02.13.14				
					REV: 02.13.14				
					REV: 02.13.14				
					REV: 02.13.14				
					REV: 02.13.14				
					REV: 02.13.14				
					REV: 02.13.14				
					REV: 02.13.14				
					REV: 02.13.14				
					REV: 02.13.14				
					REV: 02.13.14				
					REV: 02.13.14				
					REV: 02.13.14				
					REV: 02.13.14				
					REV: 02.13.14				
					REV: 02.13.14				
					REV: 02.13.14				
					REV: 02.13.14				
					REV: 02.13.14				
					REV: 02.13.14				
					REV: 02.13.14				
					REV: 02.13.14				
					REV: 02.13.14				
					REV: 02.13.14				
					REV: 02.13.14				
					REV: 02.13.14				
					REV: 02.13.14				
					REV: 02.13.14				
					REV: 02.13.14				
					REV: 02.13.14				
					REV: 02.13.14				
					REV: 02.13.14				
					REV: 02.13.14				
					REV: 02.13.14				
					REV: 02.13.14				
					REV: 02.13.14				
					REV: 02.13.14				
					REV: 02.13.14				
					REV: 02.13.14				
					REV: 02.13.14				
					REV: 02.13.14				
					REV: 02.13.14				
					REV: 02.13.14				
					REV: 02.13.14				
					REV: 02.13.14				
					REV: 02.13.14				
					REV: 02.13.14				
					REV: 02.13.14				
					REV: 02.13.14				
					REV: 02.13.14				
					REV: 02.13.14				
					REV: 02.13.14				
					REV: 02.13.14				
					REV: 02.13.14				
					REV: 02.13.14				
					REV: 02.13.14				
					REV: 02.13.14				
					REV: 02.13.14				
					REV: 02.13.14				
					REV: 02.13.14				
					REV: 02.13.14				
					REV: 02.13.14				
					REV: 02.13.14				
					REV: 02.13.14				
					REV: 02.13.14				
					REV: 02.13.14				
					REV: 02.13.14				
					REV: 02.13.14				
					REV: 02.13.14				
					REV: 02.13.14				
					REV: 02.13.14				
					REV: 02.13.14				
					REV: 02.13.14				
					REV: 02.13.14				
					REV: 02.13.14				
					REV: 02.13.14				
					REV: 02.13.14				
					REV: 02.13.14				
					REV: 02.13.14				
					REV: 02.13.14				
					REV: 02.13.14				
					REV: 02.13.14				
					REV: 02.13.14				
					REV: 02.13.14				
					REV: 02.13.14				
					REV: 02.13.14				
					REV: 02.13.14				
					REV: 02.13.14				
					REV: 02.13.14				
					REV: 02.13.14				
					REV: 02.13.14				
					REV: 02.13.14				
					REV: 02.13.14				
					REV: 02.13.14				
					REV: 02.13.14				
					REV: 02.13.14				
					REV: 02.13.14				
					REV: 02.13.14				
					REV: 02.13.14				
					REV: 02.13.14				
					REV: 02.13.14				
					REV: 02.13.14				
					REV: 02.13.14				
					REV: 02.13.14				
					REV: 02.13.14				
					REV: 02.13.14				
					REV: 02.13.14				
					REV: 02.13.14				
					REV: 02.13.14				
					REV: 02.13.14				
					REV: 02.13.14				
					REV: 02.13.14				
					REV: 02.13.14				
					REV: 02.13.14				
					REV: 02.13.14				
					REV: 02.13.14				
					REV: 02.13.14				
					REV: 02.13.14				
					REV: 02.13.14				
					REV: 02.13.14				
					REV: 02.13.14				
					REV: 02.13.14				
					REV: 02.13.14				
					REV: 02.13.14				
					REV: 02.13.14				
					REV: 02.13.14				
					REV: 02.13.14				
					REV: 02.13.14				
					REV: 02.13.14				
					REV: 02.13.14				
					REV: 02.13.14				
					REV: 02.13.14				
					REV: 02.13.14				
					REV: 02.13.14				
					REV: 02.13.14				
					REV: 02.13.14				
					REV: 02.13.14				
					REV: 02.13.14				
					REV: 02.13.14				
					REV: 02.13.14				
					REV: 02.13.14				
					REV: 02.13.14				
					REV: 02.13.14				
					REV: 02.13.14				
					REV: 02.13.14				
					REV: 02.13.14				
					REV: 02.13.14				
					REV: 02.13.14				
					REV: 02.13.14				
					REV: 02.13.14				
					REV: 02.13.14				
					REV: 02.13.14				
					REV: 02.13.14				
					REV: 02.13.14				
					REV: 02.13.14				
					REV: 02.13.14				
					REV: 02.13.14				
					REV: 02.13.14				
					REV: 02.13.14				
					REV: 02.13.14				
					REV: 02.13.14				
					REV: 02.13.14				
					REV: 02.13.14				
					REV: 02.13.14				
					REV: 02.13.14				
					REV: 02.13.14				
					REV: 02.13.14				
					REV: 02.13.14				
					REV: 02.13.14				
					REV: 02.13.14				
					REV: 02.13.14				
					REV: 02.13.14				
					REV: 02.13.14				
					REV: 02.13.14				
					REV: 02.13.14				
					REV: 02.13.14				
					REV: 02.13.14				
					REV: 02.13.14				
					REV: 02.13.14				
					REV: 02.13.14				
					REV: 02.13.14				