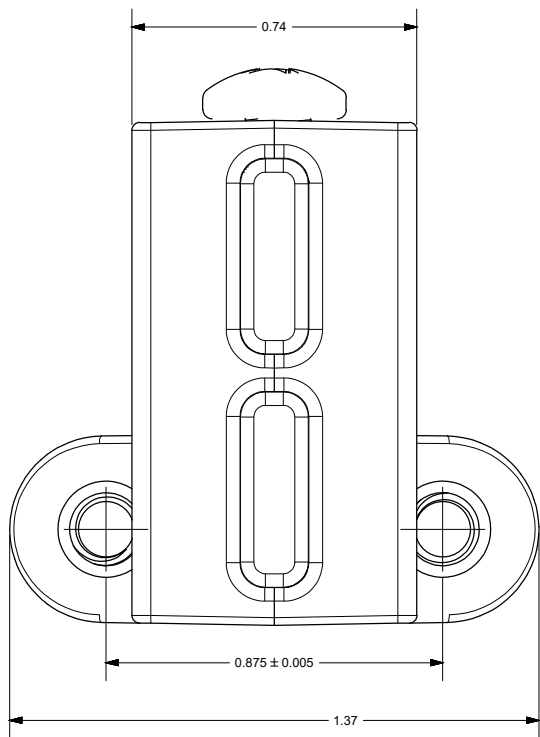
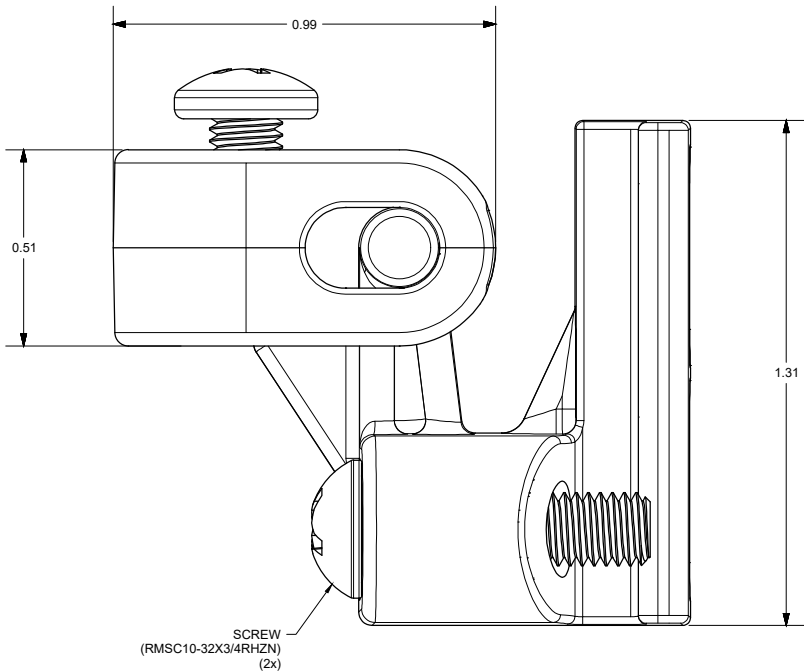
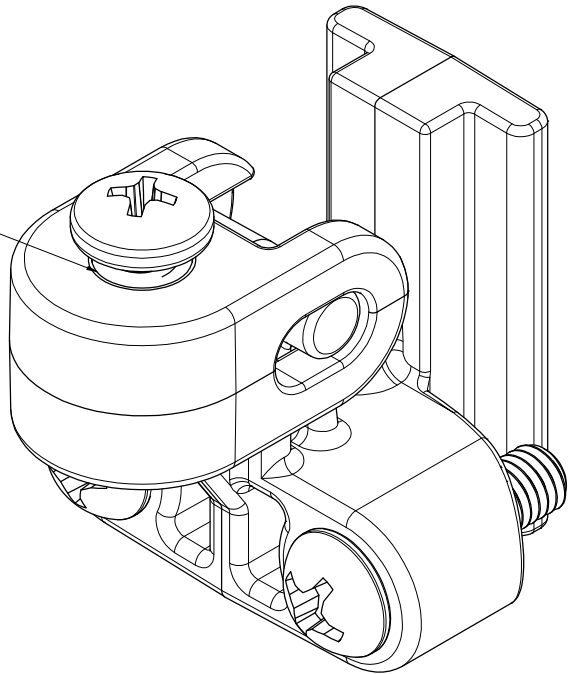



#10-32 BRASS INSERT
(3x)



THIS DRAWING IS THE SOLE AND EXCLUSIVE
PROPERTY OF ROBROY ENCLOSURES.
NO PART OF THIS DRAWING MAY BE
REPRODUCED, DISTRIBUTED, OR PUBLICALLY
DISPLAYED IN ANY FORM OR BY ANY MEANS
WITHOUT THE EXPRESS WRITTEN
PERMISSION OF ROBROY ENCLOSURES.
ALL RIGHTS RESERVED.
UNDER THE COPYRIGHT LAWS.
COPYRIGHT © 2016 ROBROY ENCLOSURES

SPECIAL REQUIREMENTS
ASSEMBLY:
1. SWING PANEL MOUNT KIT INCLUDES THE FOLLOWING:
-(4) SWING PANEL MOUNTS (RMAHSPM-001)
-(4) #10-32 x 3/8 SCREW (RMSC10/32X3/8ZN)
-(8) #10-32 x 3/4 SCREWS (RMSC10-32X3/4RHZN)
-(1) 4 x 6 ZIP-LOCK BAG (RM4X6BAGZL)

NEMA 250: TYPE N/A IEC 60529: N/A		STANDARD P/N: AHSPM		ALL DIMENSIONS ARE IN INCHES UNLESS OTHERWISE SPECIFIED		TOLERANCES UNLESS SPECIFIED		.XX ± 0.03	.XXX ± 0.010
COLOR: N/A COLOR STANDARD: PANTONE 7541 C		CUSTOMER DWG:		<div><div> AttaBox</div><div>A ROBROY ENCLOSURES™ BRAND</div></div>					
MATERIAL: POLYCARBONATE									
REVISION HISTORY									
REV	DESCRIPTION	DATE	ENG	DRAWN BY	DATE	CUSTOMER		DWG	
-	-	-	-	DRH	08/01/16			AHSPM	
-	-	-	-	SCALE		DESCRIPTION		PART NUMBER	
-	-	-	-	DO NOT SCALE		SWING PANEL MOUNT KIT		ATAHSPM	
3			2			1			

AttaBox
A ROBROY ENCLOSURES™ BRAND

Robroy Enclosures
500 Maple Street
Belding, Michigan 48809
Phone: 616-794-0700
Fax: 616-749-3378

DWG
AHSPM