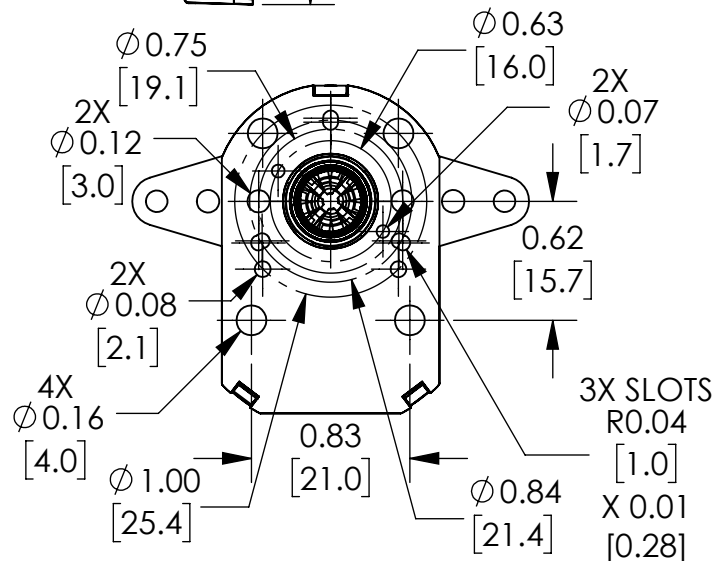
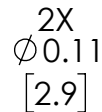
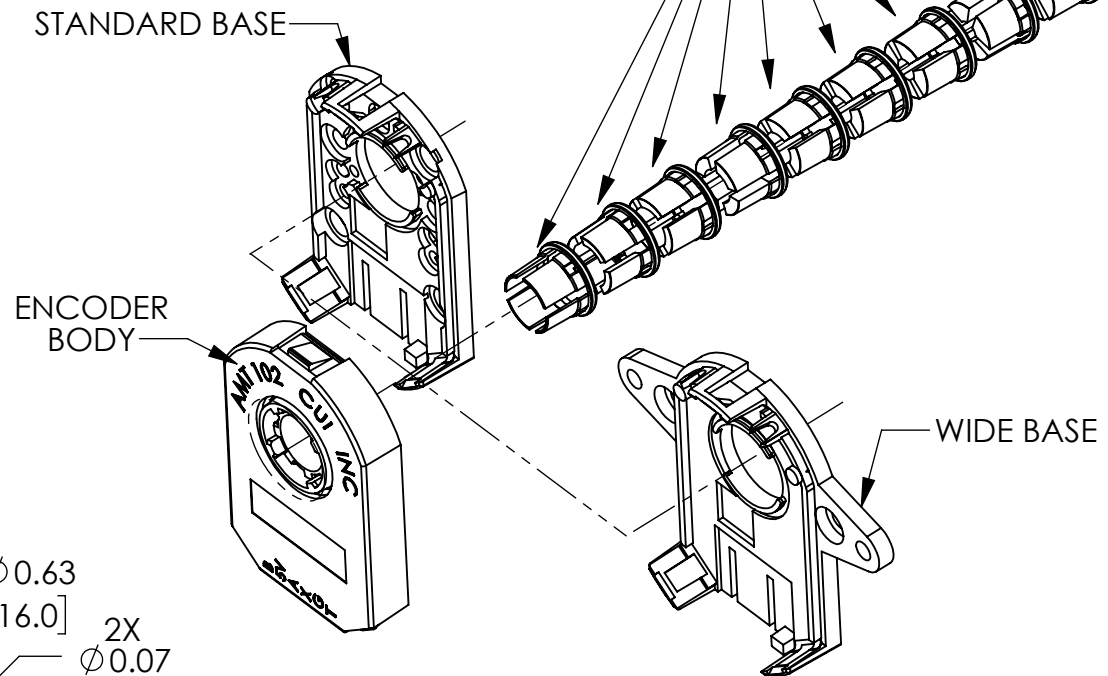


SLEEVE BORE INSERTS



BACK VIEW



1. DIMENSIONS CAN BE CHANGED BY MANUFACTURER WITHOUT NOTICE.
2. DIMENSIONS DO NOT IMPLY TOLERANCE.

CUI INCREMENTAL MODULAR
ENCODER, 5 VDC, RADIAL, TOTEM
OUTPUT, FOR USE WITH NEMA 14,
17, 23 DUAL SHAFT MOTORS

