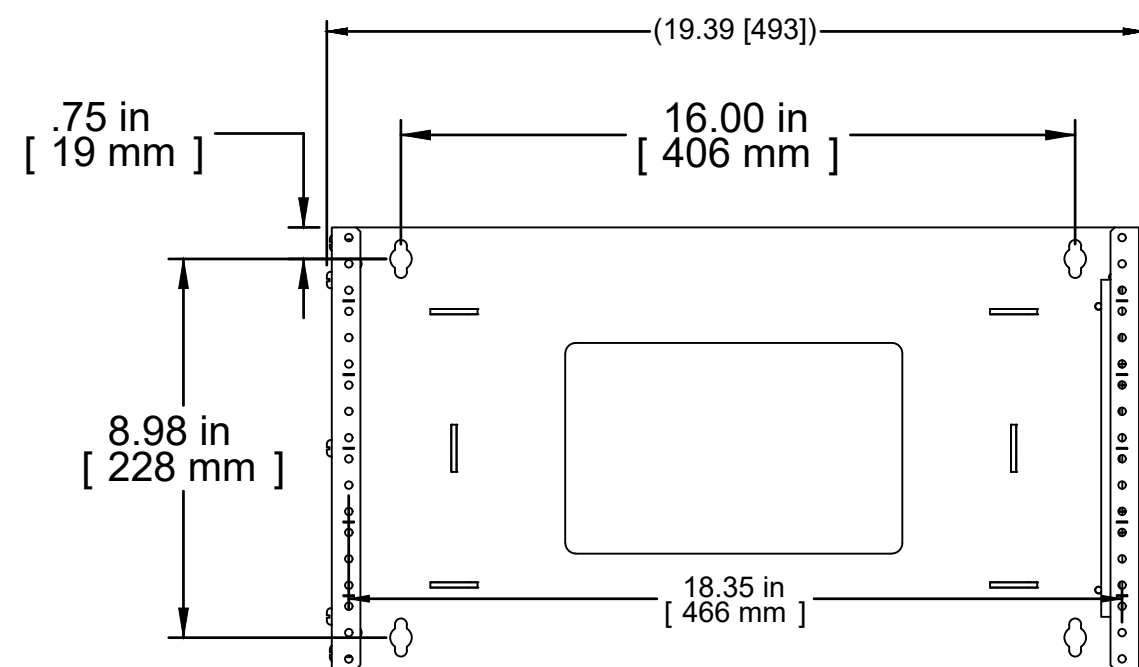
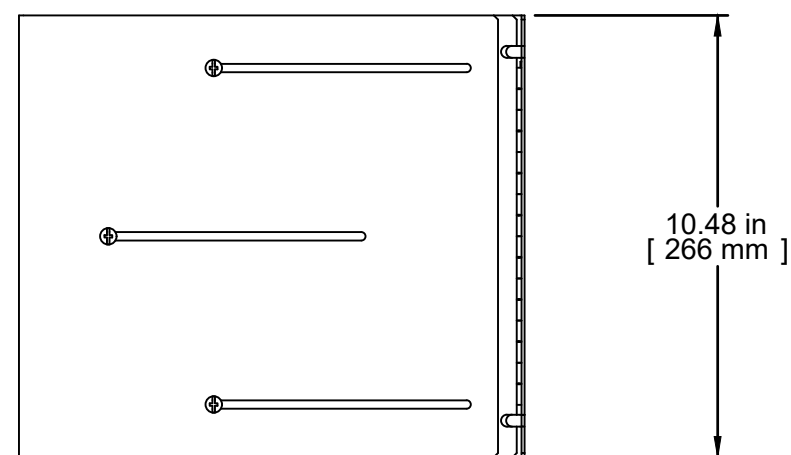


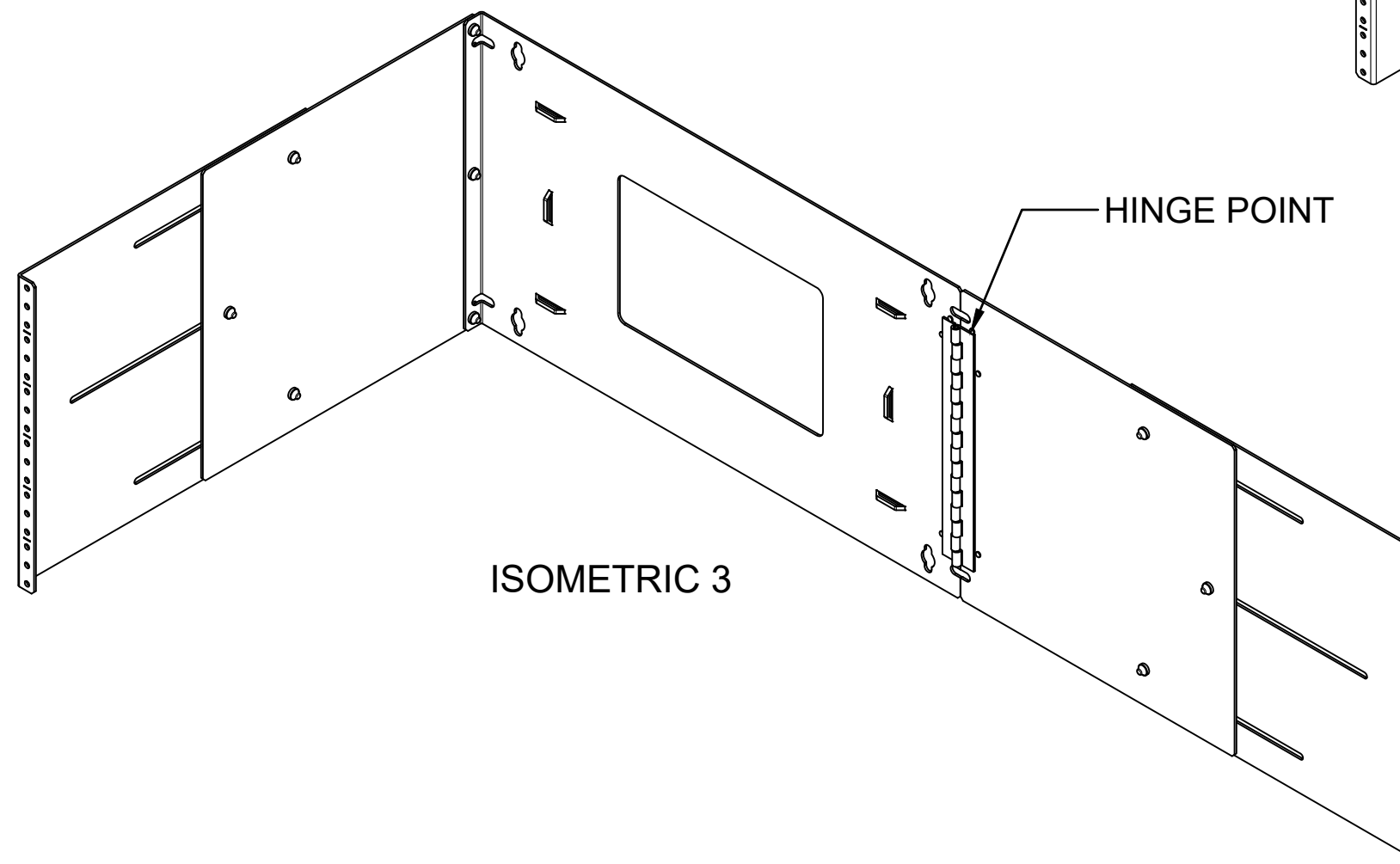
TOP VIEW



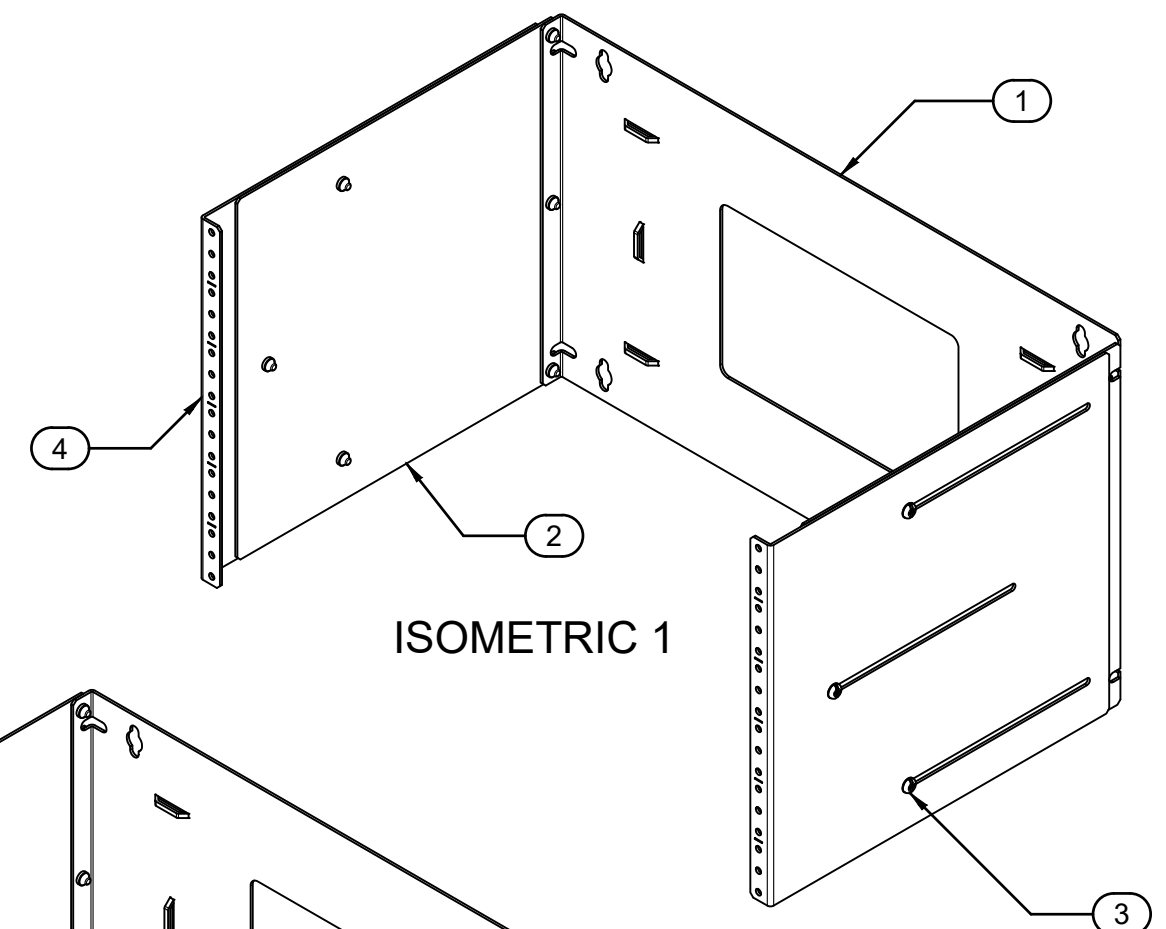
FRONT VIEW



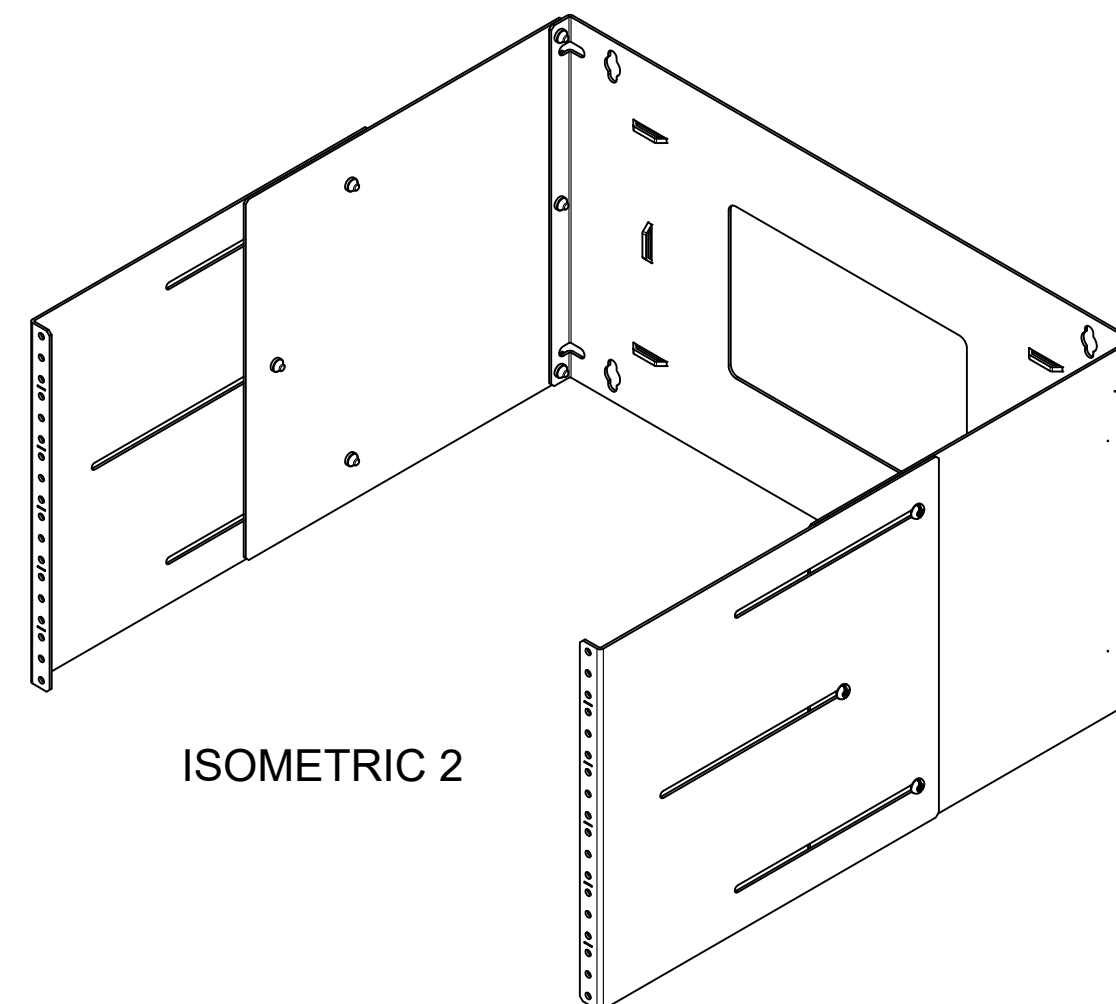
R.S. VIEW



ISOMETRIC 3



ISOMETRIC 1



ISOMETRIC 2

| Item Number | Title                          | Quantity |
|-------------|--------------------------------|----------|
| 1           | ADJUSTABLE PANEL BRACKET ASS'Y | 1        |
| 2           | APB 6U PEM SIDE PANEL W/ PEM   | 1        |
| 3           | SCREW 10-32 X 3/8 BDHD SLZP    | 9        |
| 4           | APB 6U TAPPED SLIDE RAIL       | 2        |

**PART NUMBERS**

APB19010BK1 | PAINTED SMOOTH BLACK

Adjustable depth from 12" to 18". [305mm to 457mm]

Wall mounting hardware "not included".

Equipment mounting hardware supplied

Made from 14 GA steel.

Design and material changed (2017)

Data subject to change without notice. Isometric drawing not to scale.

Les données sont sujettes à changement sans préavis.

**HAMMOND MANUFACTURING.**  
www.hammondmfg.com  
PART NO. **APB19010BK1**