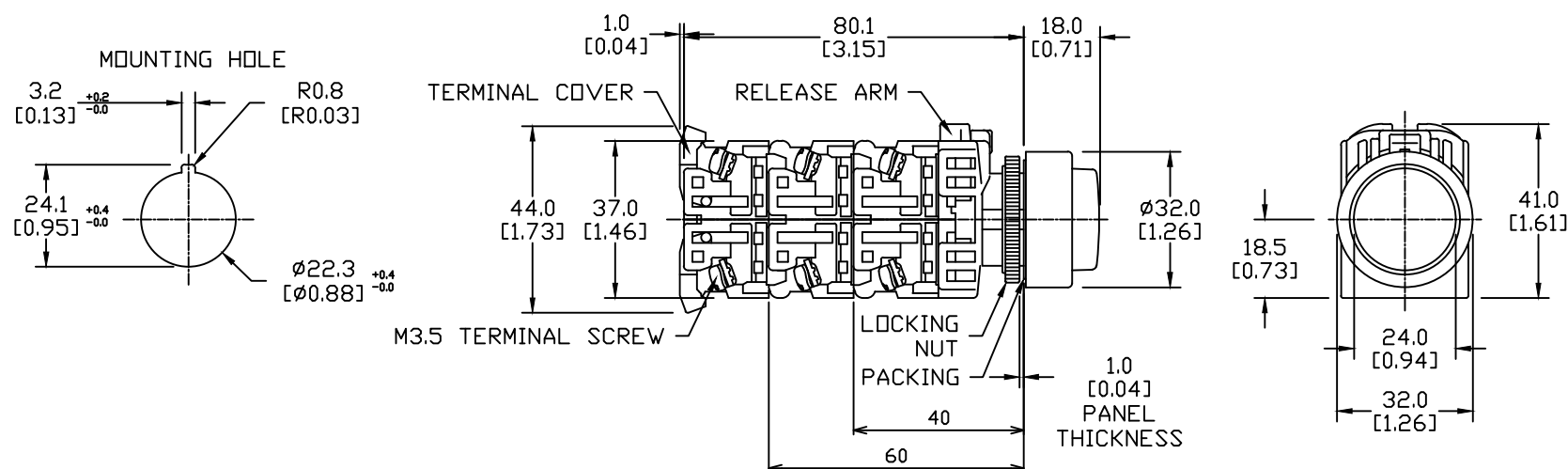



NOTE: IF KEY-WASHER OR LEGEND PLATE  
ARE NOT USED, 3.2MM-WIDE LOCATION  
HOLES NEED NOT BE CUTOUT.



# NOTES:

1. DIMENSIONS CAN BE CHANGED BY MANUFACTURER WITHOUT NOTICE.
2. DIMENSIONS DO NOT IMPLY TOLERANCE.

AR22E0R-10YZA
Units: mm [inch]
Full Scale
PB 22mm, METAL, YELLOW, NORMALLY OPEN, MOMENTARY, EXTENDED, 30mm HEAD
 <b>AUTOMATIONDIRECT</b> .com