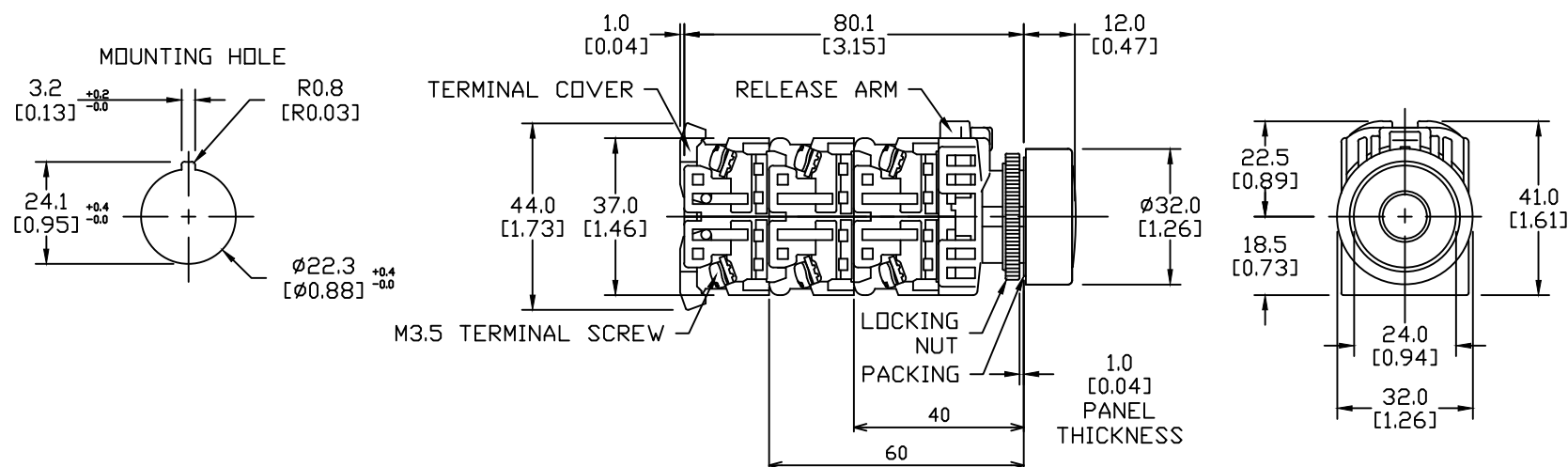


NOTE: IF KEY-WASHER OR LEGEND PLATE
ARE NOT USED, 3.2MM-WIDE LOCATION
HOLES NEED NOT BE CUTOUT.



NOTES:

1. DIMENSIONS CAN BE CHANGED BY MANUFACTURER WITHOUT NOTICE.
2. DIMENSIONS DO NOT IMPLY TOLERANCE.

AR22FAR-01C01ZA

Units: mm [inch]

Full Scale

PB 22mm, METAL, RED, NORMALLY
CLOSED, MOMENTARY FLUSH, 30mm
HEAD W/OFF IMPRINT

AUTOMATIONDIRECT.com