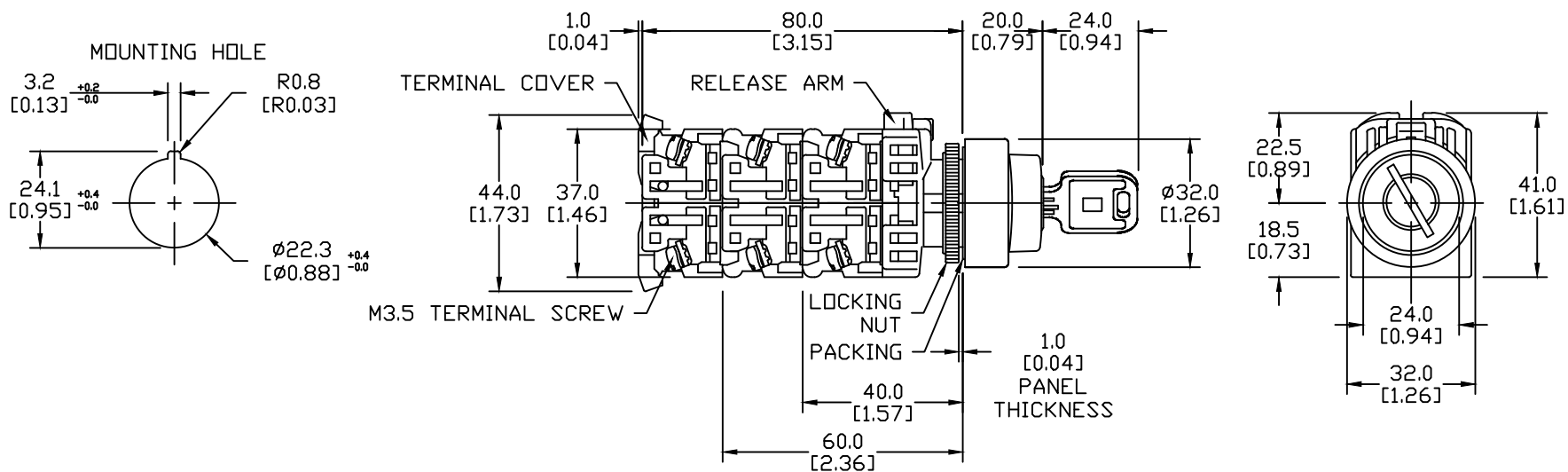


NOTE: IF KEY-WASHER OR LEGEND PLATE  
ARE NOT USED, 3.2MM-WIDE LOCATION  
HOLES NEED NOT BE CUTOUT.



#### NOTES:

1. DIMENSIONS CAN BE CHANGED BY MANUFACTURER WITHOUT NOTICE.
2. DIMENSIONS DO NOT IMPLY TOLERANCE.

AR22JR-2B10AZA

Units: mm [inch]

Full Scale

SEL 22mm, METAL, KEY, NORMALLY  
OPEN, MNTND, 2-POS

**AUTOMATIONDIRECT**.com