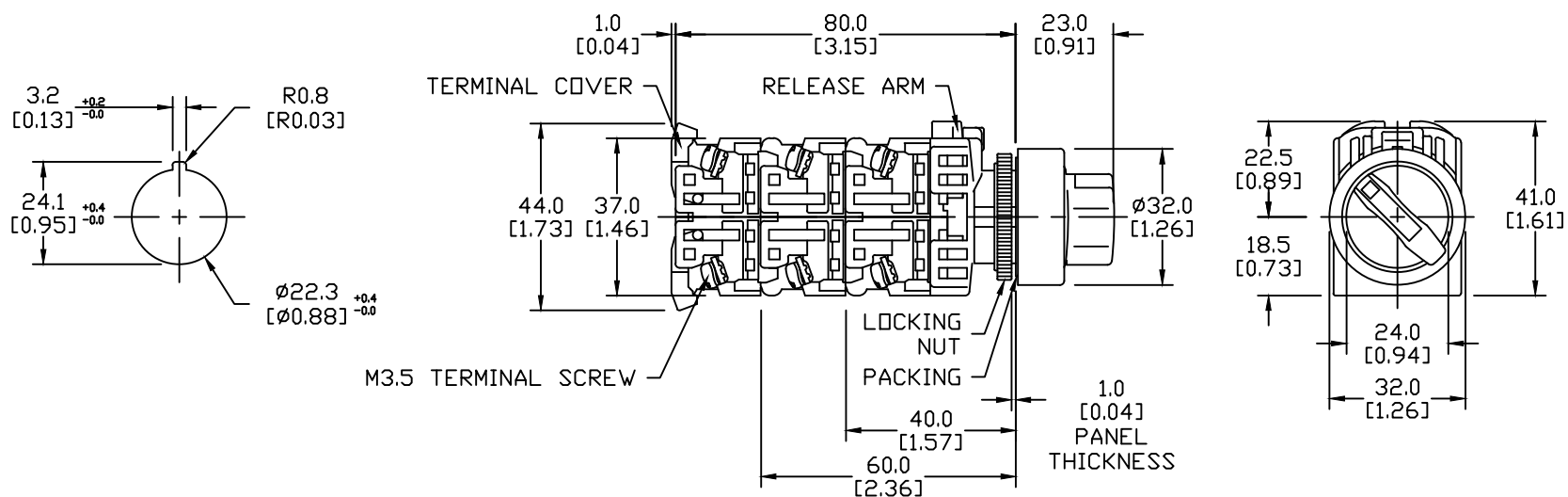


NOTE: IF KEY-WASHER OR LEGEND PLATE
ARE NOT USED, 3.2MM-WIDE LOCATION
HOLES NEED NOT BE CUTOUT.



NOTES:

1. DIMENSIONS CAN BE CHANGED BY MANUFACTURER WITHOUT NOTICE.
2. DIMENSIONS DO NOT IMPLY TOLERANCE.

AR22PR-322BZA

Units: mm [inch]

Full Scale

SEL 22mm, METAL, BLACK KNOB,
2 NORMALLY OPEN / 2 NORMALLY
CLOSED, MNTND, 3-POS

 **AUTOMATIONDIRECT**.com