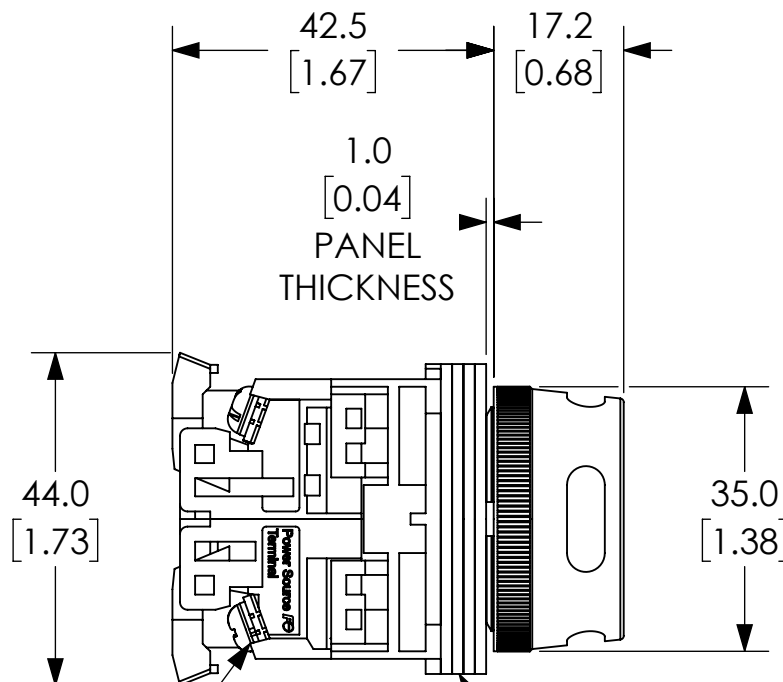


MOUNTING HOLES

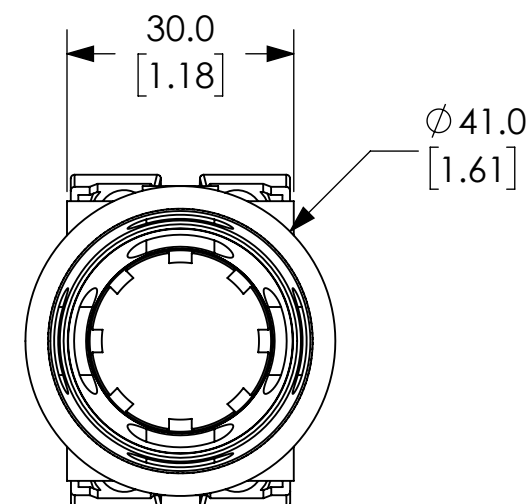
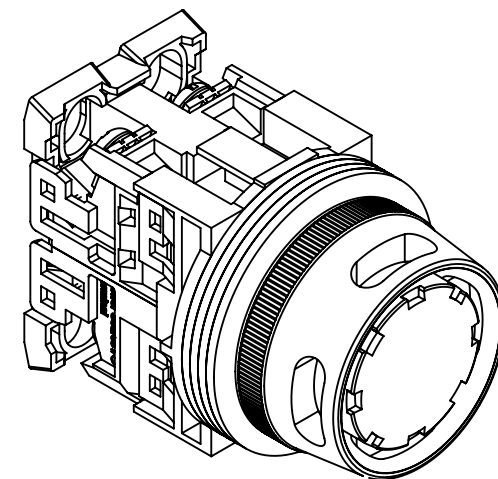
IF KEY WASHER OR LEGEND PLATE ARE NOT USED 4.8MM WIDE LOCATION HOLE NEED NOT BE CUT OUT



TERMINAL COVER

PACKING

M3.5 TERMINAL SCREW



NOTES:

1. DIMENSIONS CAN BE CHANGED BY MANUFACTURER WITHOUT NOTICE.
2. DIMENSIONS DO NOT IMPLY TOLERANCE.

AR30G2L-10E3GZC

Units: mm [inches]

Scale: Full

EXTENDED WITH OPEN FULL
GUARD, 24MM, MOMENTARY, LED
24V, GREEN, 1-NO

AUTOMATIONDIRECT.com