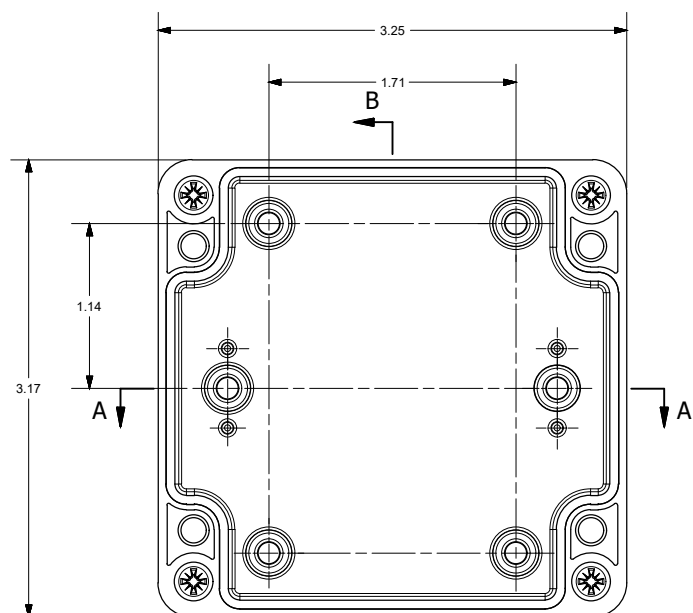
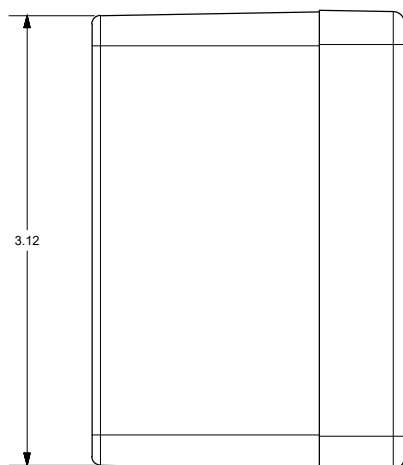
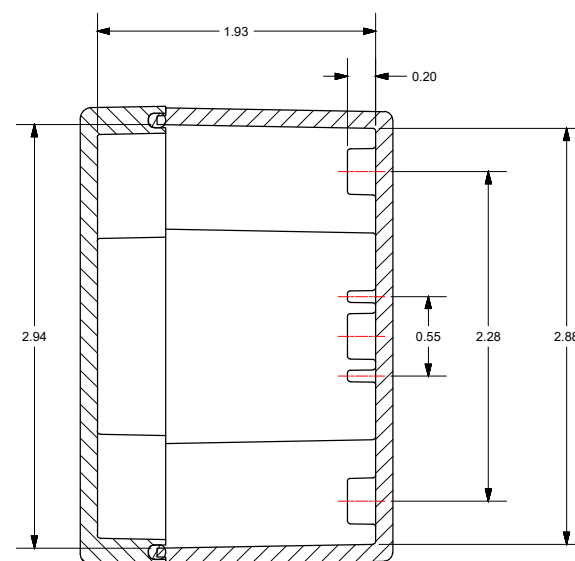


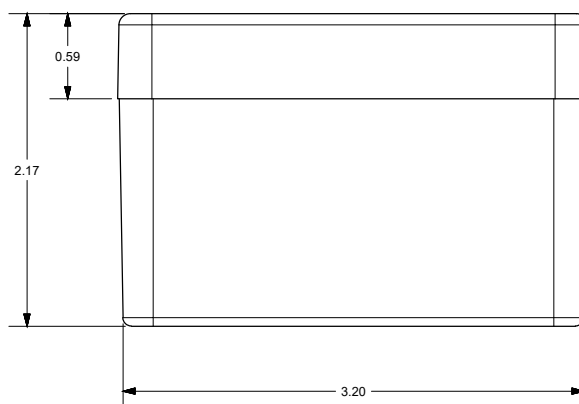
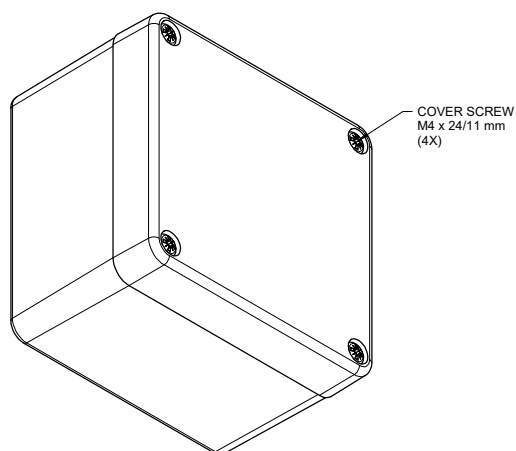
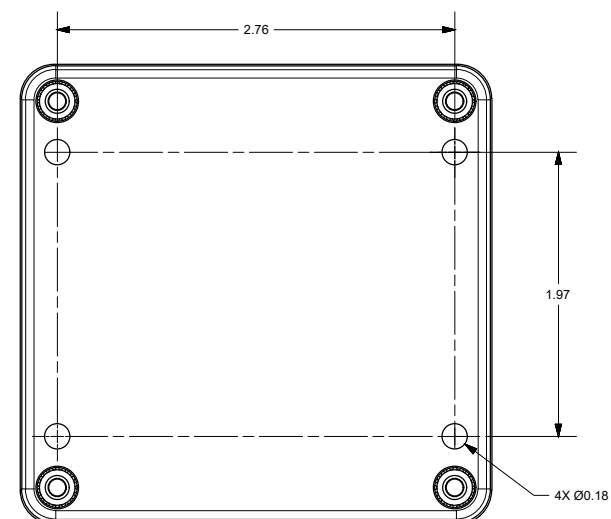
SECTION A-A



WITH COVER REMOVED



SECTION B-B



THIS DRAWING IS THE SOLE AND EXCLUSIVE
PROPERTY OF ROBROY ENCLOSURES.
NO PART OF THIS DRAWING MAY BE
REPRODUCED, DISTRIBUTED, OR PUBLICALLY
DISPLAYED IN ANY FORM OR BY ANY MEANS
WITHOUT THE EXPRESS WRITTEN
PERMISSION OF ROBROY ENCLOSURES.
ALL RIGHTS RESERVED
UNDER THE COPYRIGHT LAWS.
COPYRIGHT © 2017 ROBROY ENCLOSURES

END USER NOTES:
1. TORQUE COVER SCREWS TO 9-17 IN.-LBS. TO MAINTAIN RATINGS

SPECIAL REQUIREMENTS

NEMA 250; TYPE: 1, 3R, 4, 4X, 12 IEC 60529:	IP66	STANDARD P/N:	BCCC080805W	ALL DIMENSIONS ARE IN INCHES UNLESS OTHERWISE SPECIFIED	TOLERANCES	.XX	.XXX
COLOR: LIGHT GREY COLOR STANDARD: RAL 7035		CUSTOMER DWG:			UNLESS SPECIFIED	±0.03	±0.010
MATERIAL: POLYCARBONATE					Robroy Enclosures 500 Maple Street Belding, Michigan 48809 Phone: 616-794-0700 Fax: 616-749-3378		
REVISION HISTORY							
REV.	DESCRIPTION	DATE	ENG.				
-	-	-	-				
-	-	-	-				
				DRAWN BY	DATE	CUSTOMER	DWG
				E91	04/13/17		BCCC080805W
				SCALE	DESCRIPTION	PART NUMBER	
				DO NOT SCALE	STANDARD ENCLOSURE	ATBCC080805W	