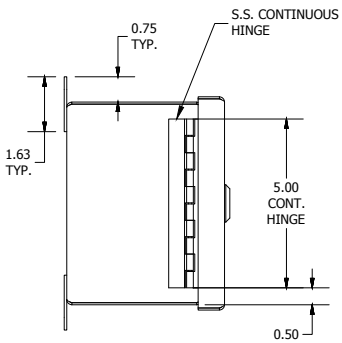
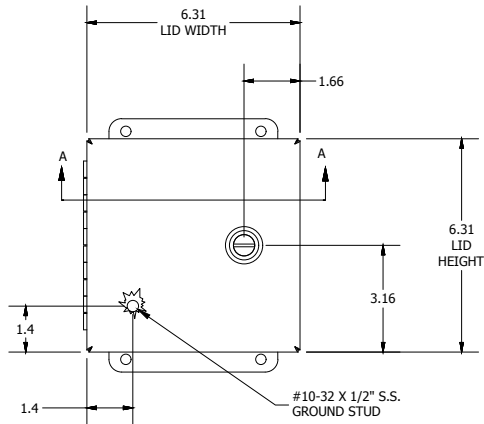


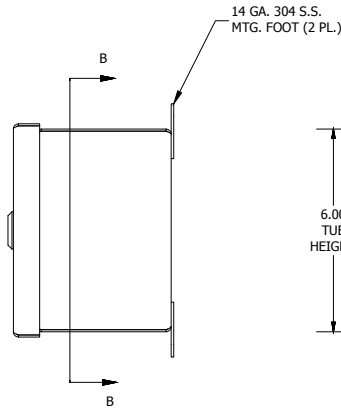
TOP VIEW



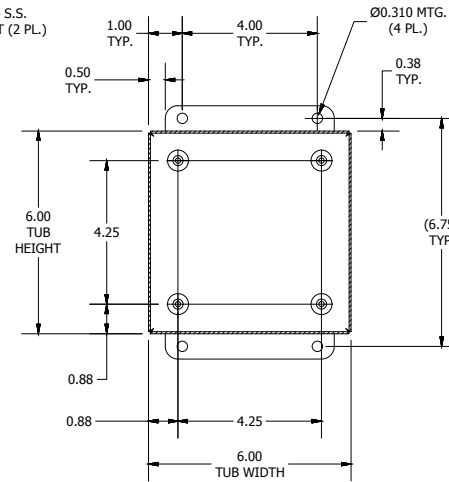
LEFT SIDE VIEW



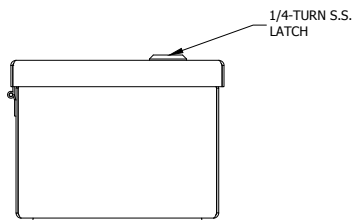
FRONT VIEW



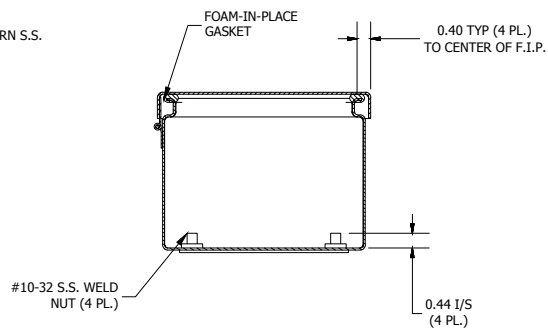
RIGHT SIDE VIEW



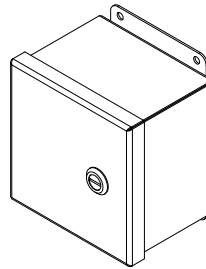
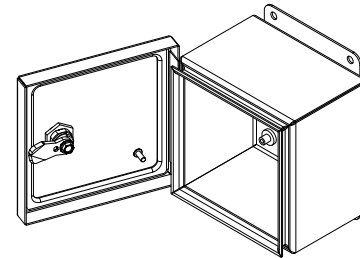
**SECTION B-B**  
(INSIDE BACK OF ENCL.)



BOTTOM VIEW



**SECTION A-A**  
(INSIDE TOP OF ENCL.)



**PART#:BN4060604CHQTSS**  
**(DATA SUBJECT TO CHANGE WITHOUT NOTICE)**

THIS DRAWING IS PROPERTY OF HUBBELL INC. WIEGMANN  
ALL INFORMATION IS PROPRIETARY AND NOT TO BE DUPLICATED