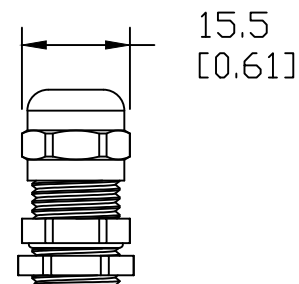


SECTION A-A



NOTES:

1. DIMENSIONS CAN BE CHANGED BY MANUFACTURER WITHOUT NOTICE.
2. DIMENSIONS DO NOT IMPLY TOLERANCE.

BSBCX-01

Units: mm [inch]

Full Scale

PG 7 BRASS CABLE GLANDS WITH LOCK NUTS
CLAMPING RANGE 3mm - 6.5mm

 **AUTOMATIONDIRECT**.com