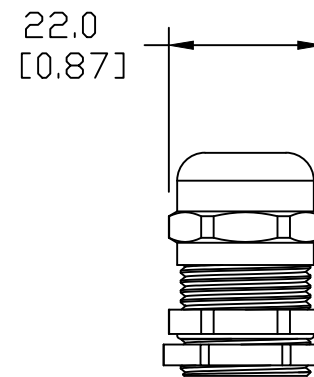


SECTION A-A



NOTES:

1. DIMENSIONS CAN BE CHANGED BY MANUFACTURER WITHOUT NOTICE.
2. DIMENSIONS DO NOT IMPLY TOLERANCE.

BSBCX-03

Units: mm [inch]

Full Scale

PG 11 BRASS CABLE GLANDS WITH LOCK NUTS
CLAMPING RANGE 5mm - 10mm

 **AUTOMATIONDIRECT**.com