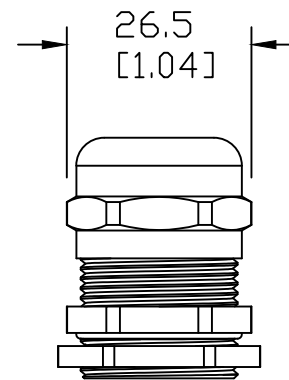


SECTION A-A



NOTES:

1. DIMENSIONS CAN BE CHANGED BY MANUFACTURER WITHOUT NOTICE.
2. DIMENSIONS DO NOT IMPLY TOLERANCE.

BSBCX-05

Units: mm [inch]

Full Scale

PG 16 BRASS CABLE GLANDS WITH LOCK NUTS
CLAMPING RANGE 10mm - 14mm

 **AUTOMATIONDIRECT**.com