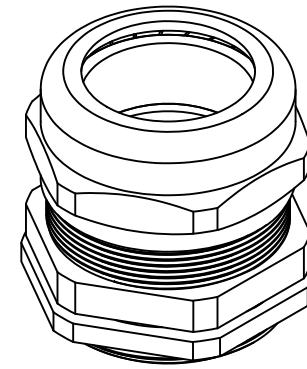
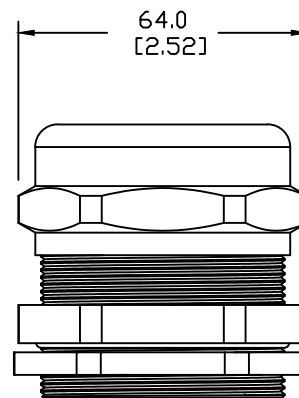


SECTION A-A



NOTES:

1. DIMENSIONS CAN BE CHANGED BY MANUFACTURER WITHOUT NOTICE.
2. DIMENSIONS DO NOT IMPLY TOLERANCE.

BSBCX-09

Units: mm [inch]

Full Scale

PG 42 BRASS CABLE GLANDS WITH LOCK NUTS
CLAMPING RANGE 30mm - 38mm

 **AUTOMATIONDIRECT**.com