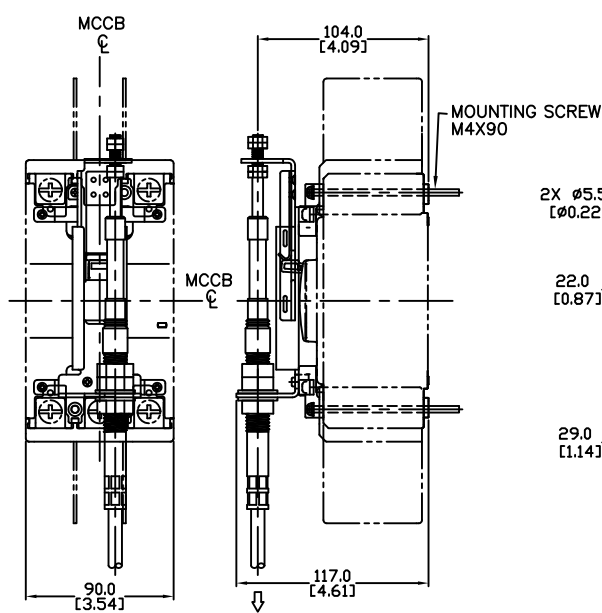
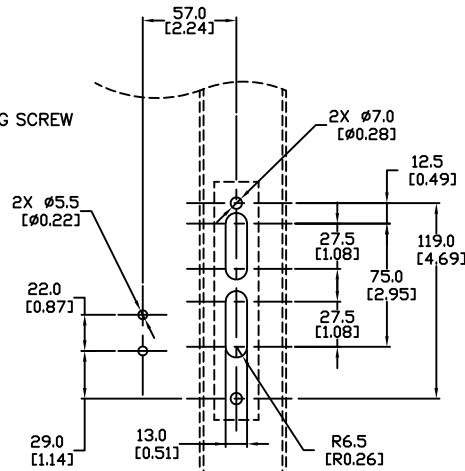


# MCCB MOUNTING ASSEMBLY

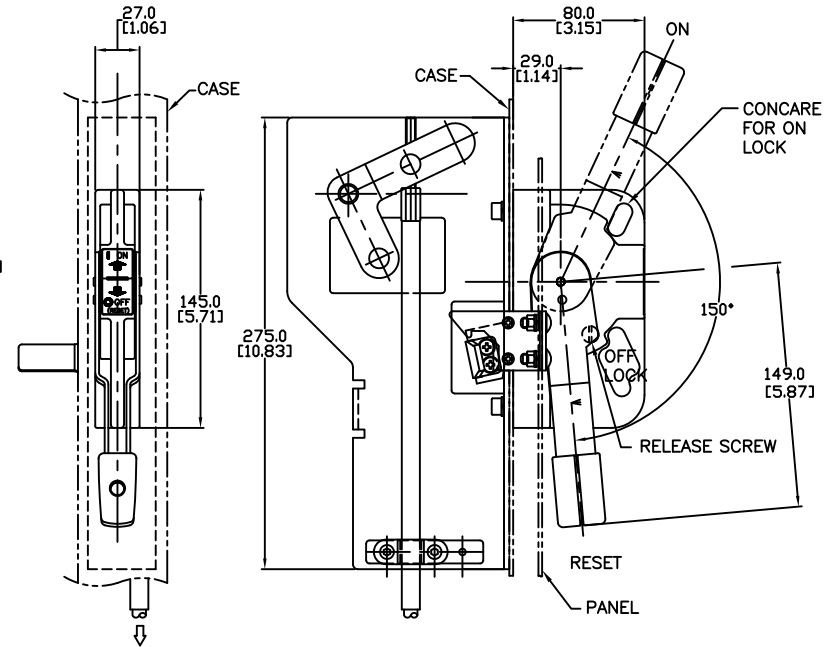


TO OPERATOR ASSEMBLY

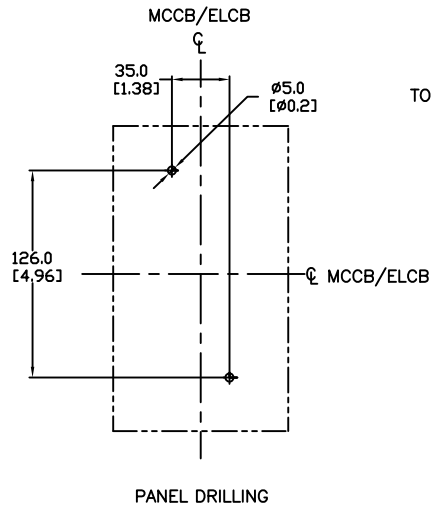


PANEL DRILLING

# OPERATOR ASSEMBLY

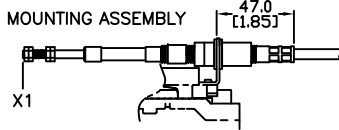


TO MCCB MOUNTING ASSEMBLY



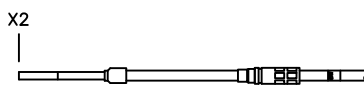
PANEL DRILLING

TO MCCB MOUNTING ASSEMBLY

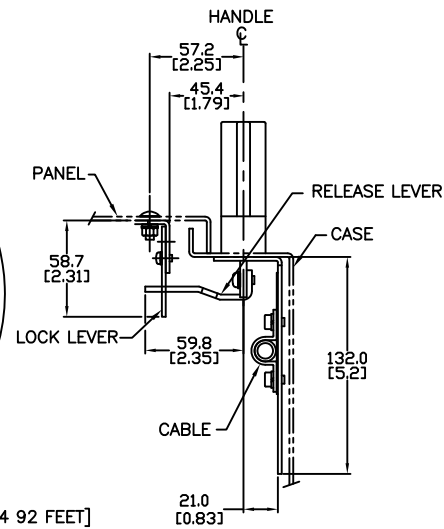


CABLE DETAILS  
NOT TO SCALE

TO OPERATOR ASSEMBLY



NOTE: LENGTH OF CABLE MEASURED FROM X1 TO X2 IS 1.5 METERS [4 92 FEET]



BW9FOCA-15A
Units: mm [inches]
Scale: Full
FLANGE DISCONNECT HANDLE FOR USE W/BW125 W/1.5 METER CABLE MCCB
AUTOMATIONDIRECT