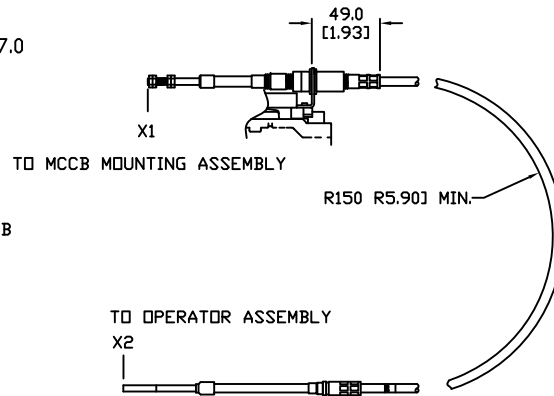
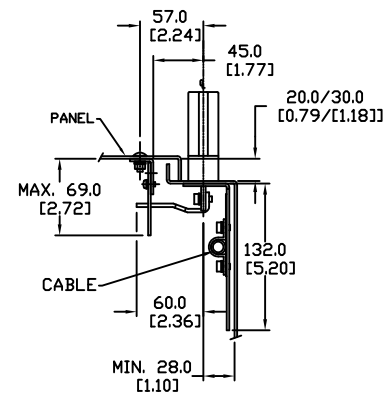


PANEL DRILLING



CABLE DETAILS
NOT TO SCALE

NOTE: LENGTH OF CABLE MEASURED FROM X1 TO X2 IS 1.5 METERS [4.92 FEET]



BW9FOJA-15A

Units: mm [inch]

Full Scale

FLANGE DISCONNECT HANDLE
FOR USE W/BW250 W/1.5 METER
CABLE MCCB

 AUTOMATIONDIRECT.COM