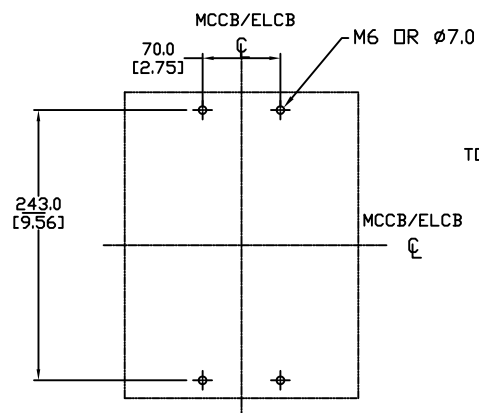
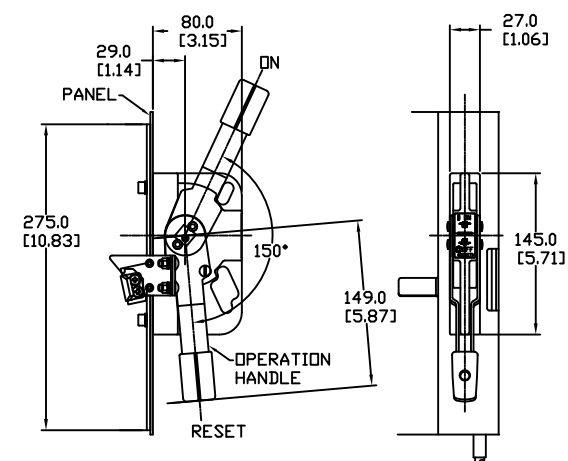
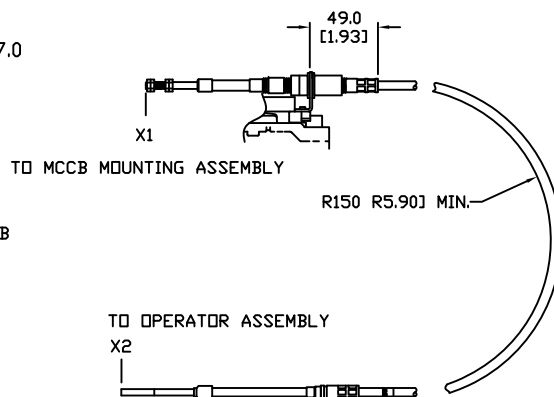


PANEL CUTTING

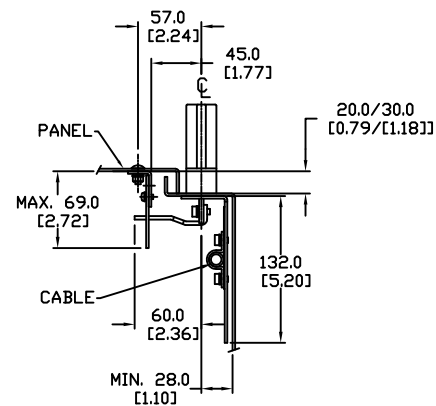


PANEL DRILLING



NOTE: LENGTH OF CABLE MEASURED FROM X1 TO X2 IS 2.0 METERS [5.65 FEET]

CABLE DETAILS
NOT TO SCALE



BW9FOJA-20A

Units: mm [inch]

Full Scale

FLANGE DISCONNECT HANDLE

FOR USE W/BW250 W/2.0 METER

CABLE MCCB

AUTOMATIONDIRECT.com