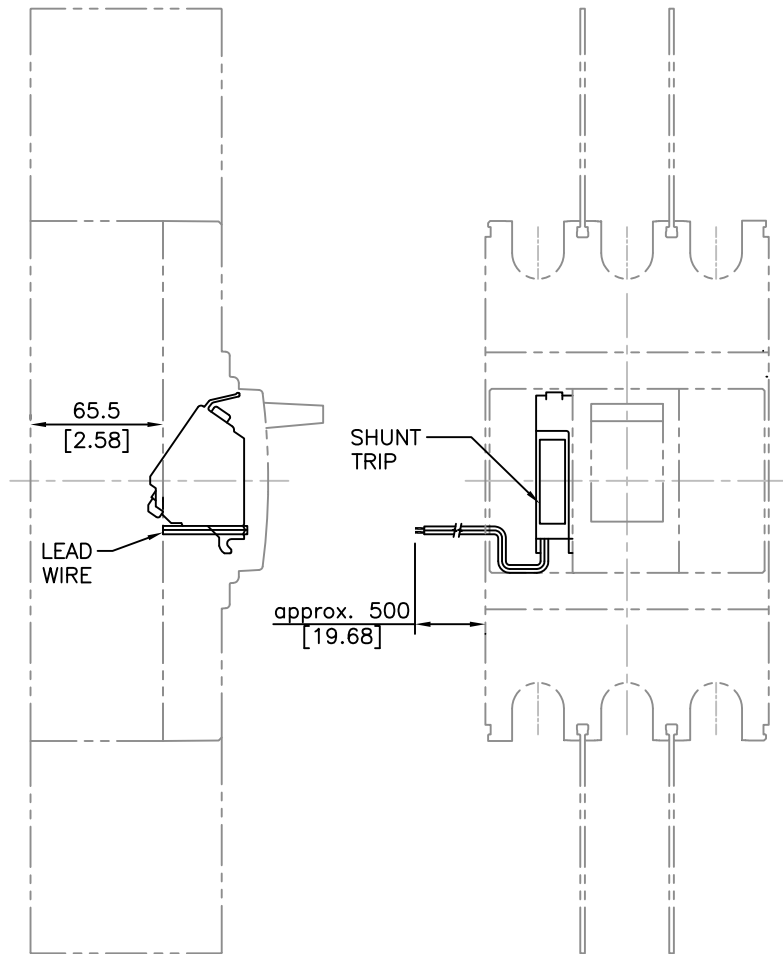
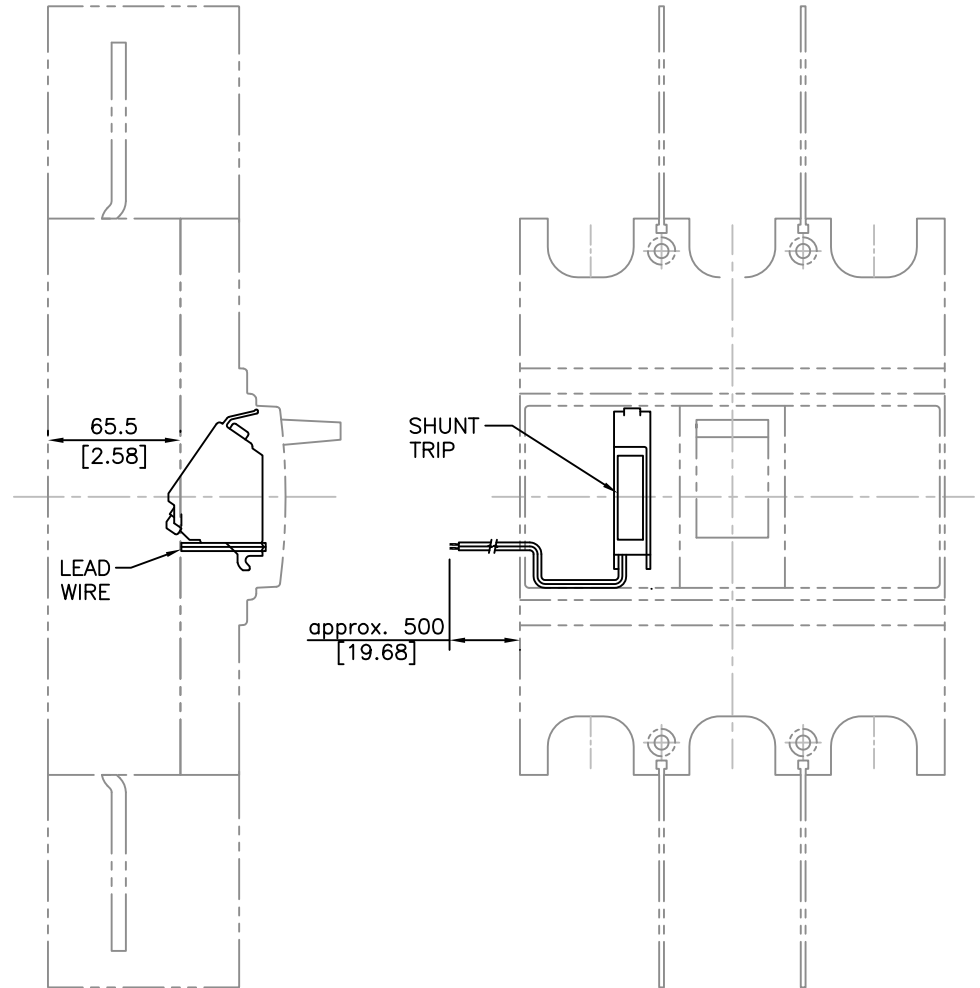


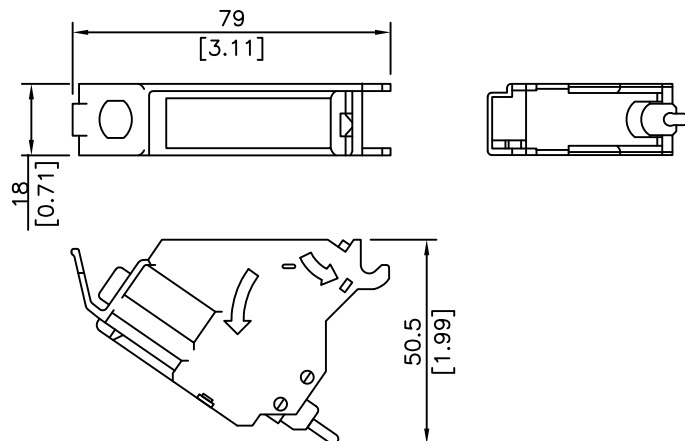
# 400A FRAME



# 630A & 800A FRAME



## SHUNT TRIP NOT TO SCALE



## BW9FHA-R

Units: mm [inches]

Scale: Full—unless otherwise noted

28-48V DC/AC SHUNT TRIP

FOR USE W/ BW400, BW630 & BW800  
MCCBs

**AUTOMATIONDIRECT**.com