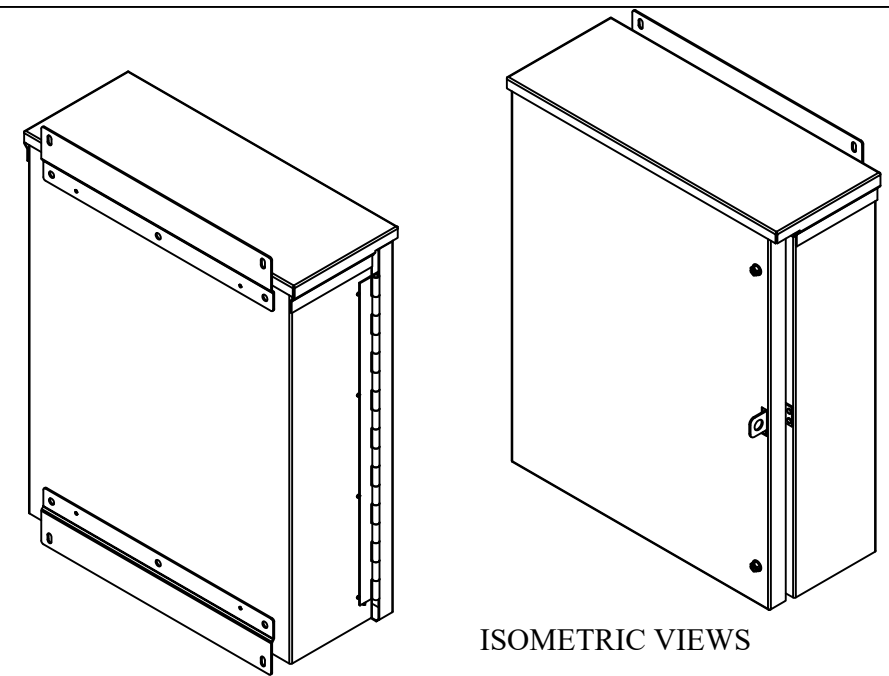
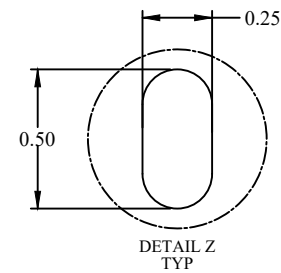
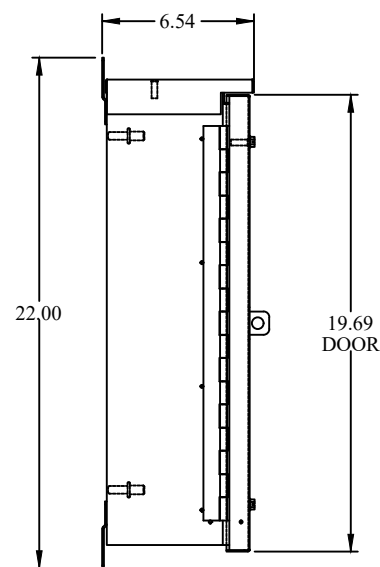


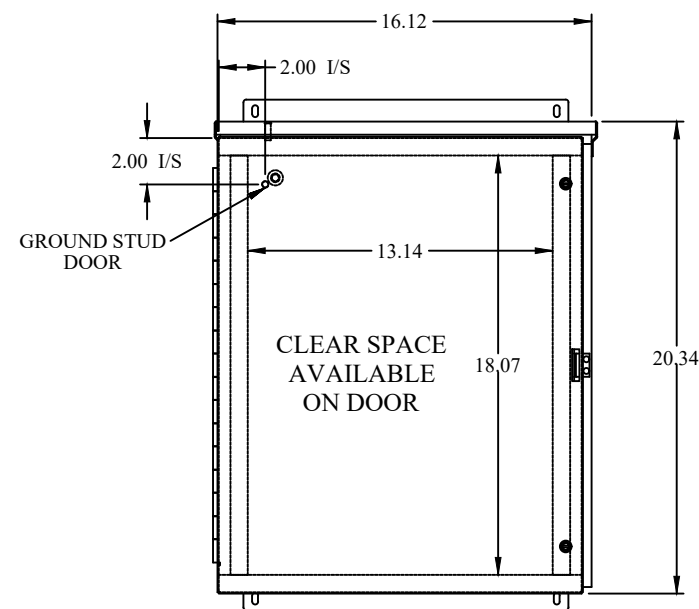
TOP VIEW



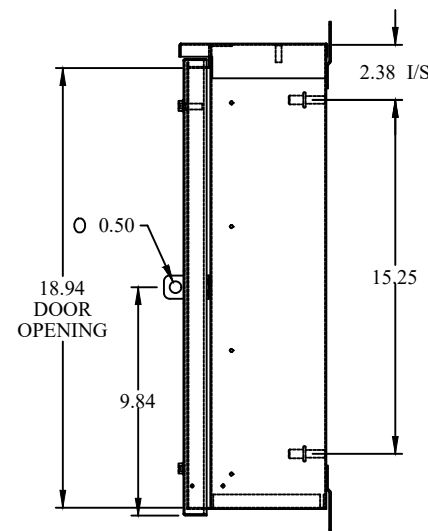
ISOMETRIC VIEWS



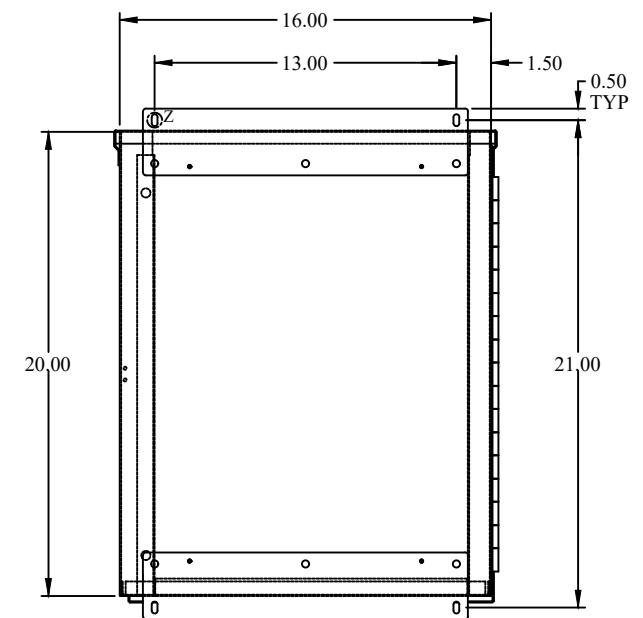
SIDE VIEW



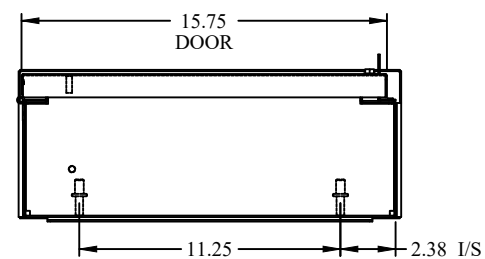
FRONT VIEW



SIDE VIEW



BACK VIEW



BOTTOM VIEW



Data subject to change without notice.

Part #: C3R20166HCR Date: Mar. 24, 2019

Link: [www.hammondmfg.com/C3R20166HCR](http://www.hammondmfg.com/C3R20166HCR)