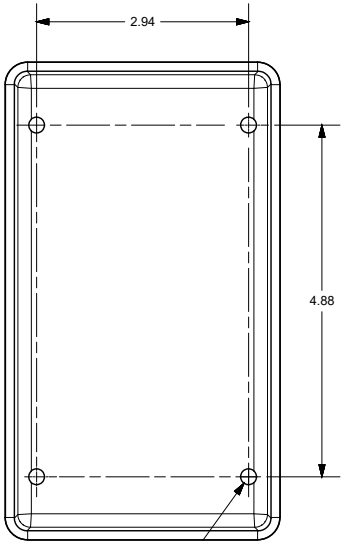
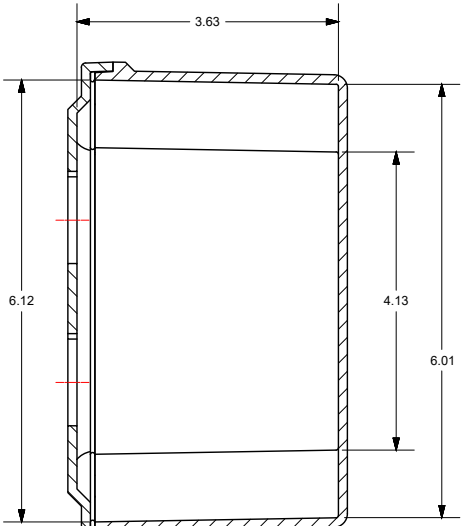
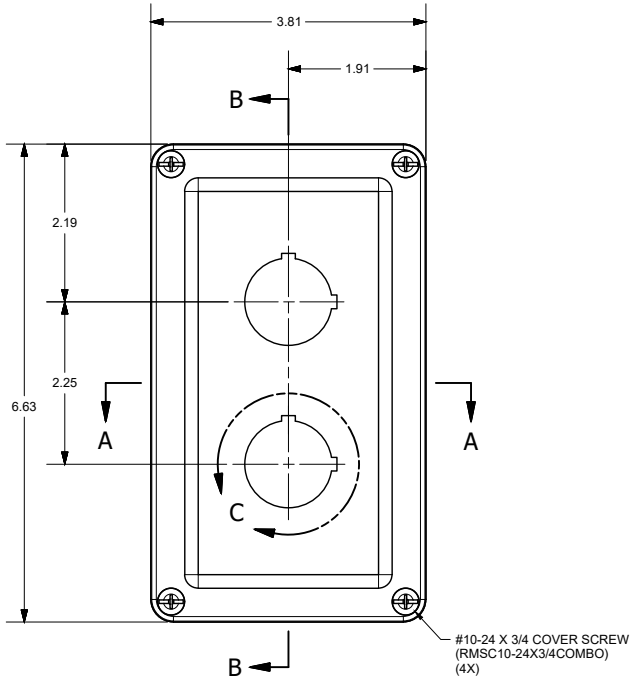
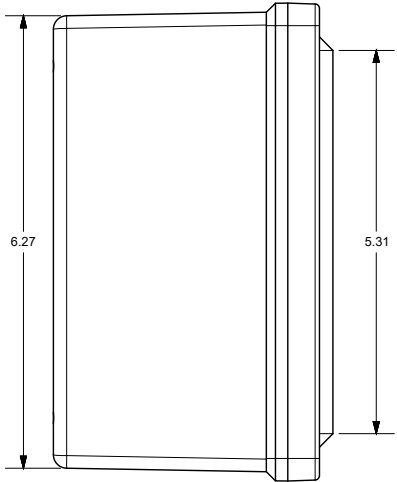
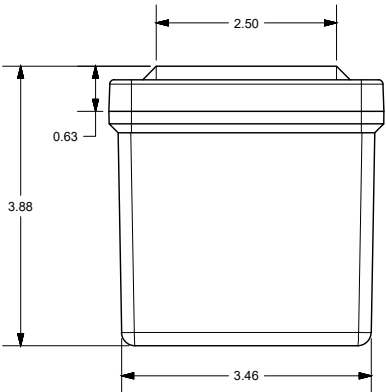
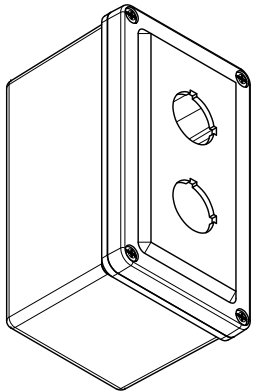


PRODUCT LABEL DETAIL
(BOX)



SECTION B-B



END USER NOTES:
1. TORQUE COVER SCREWS TO 20-24 IN.-LBS. TO MAINTAIN RATINGS

THIS DRAWING IS THE SOLE AND EXCLUSIVE
PROPERTY OF ROBROY ENCLOSURES.
NO PART OF THIS DRAWING MAY BE
REPRODUCED, DISTRIBUTED, OR PUBLICALLY
DISPLAYED IN ANY FORM OR BY ANY MEANS
WITHOUT THE EXPRESS WRITTEN
PERMISSION OF ROBROY ENCLOSURES.
ALL RIGHTS RESERVED
UNDER THE COPYRIGHT LAWS.
COPYRIGHT © 2017 ROBROY ENCLOSURES

SPECIAL REQUIREMENTS

NEMA 250: TYPE 1, 3R, 4X, 6P, 12 IEC 60529: IP66, IP67, IP68 COLOR: GLACIER GRAY (WPR3013) COLOR STANDARD: PANTONE 428 C		STANDARD P/N: CO2PB CUSTOMER DWG:		ALL DIMENSIONS ARE IN INCHES UNLESS OTHERWISE SPECIFIED		TOLERANCES UNLESS SPECIFIED		.XX ± 0.03	XXX ± 0.010
MATERIAL: FIBERGLASS REINFORCED POLYESTER (FRP)		REVISION HISTORY		AttaBox		Robroy Enclosures 500 Maple Street Belding, Michigan 48809 Phone: 616-794-0700 Fax: 616-749-3378		DWG CO2PB	
REV	DESCRIPTION	DATE	ENG						
-	-	-	-	DRAWN BY E91		DATE 05/17/17		CUSTOMER	
-	-	-	-	SCALE DO NOT SCALE		DESCRIPTION STANDARD ENCLOSURE		PART NUMBER ATCO2PB	