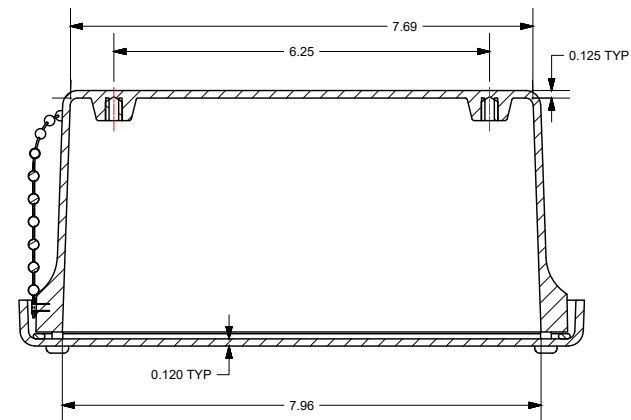
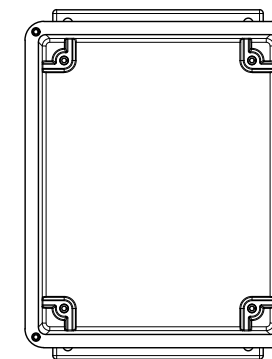


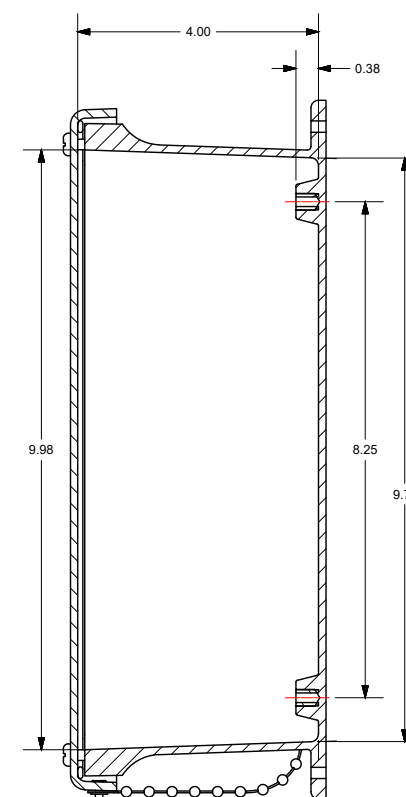
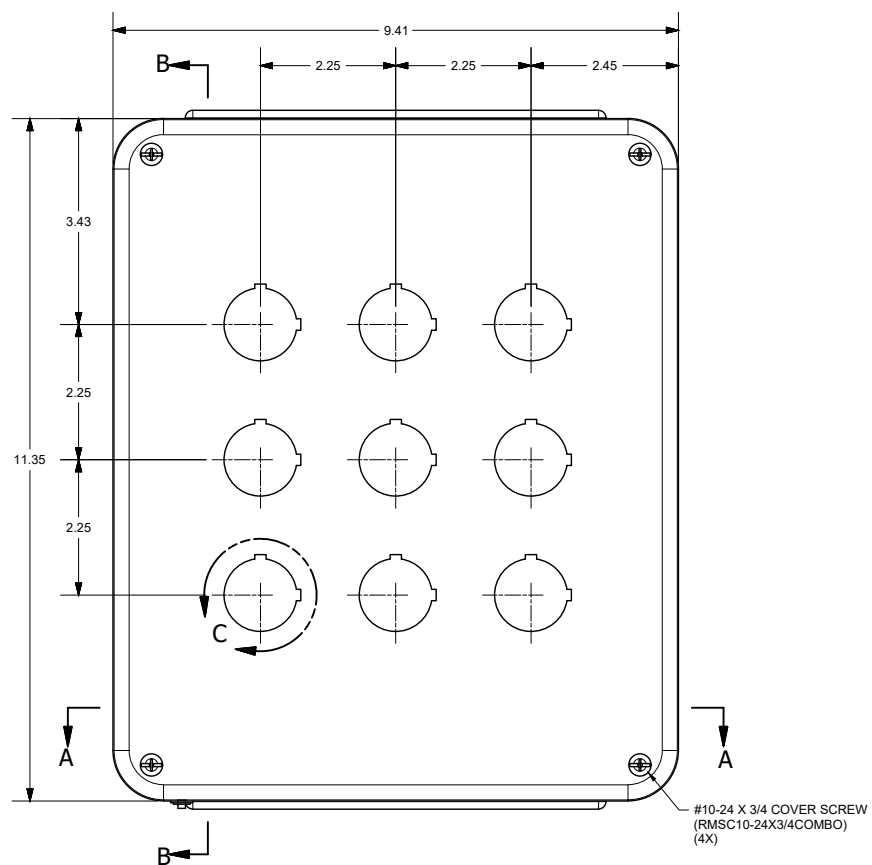
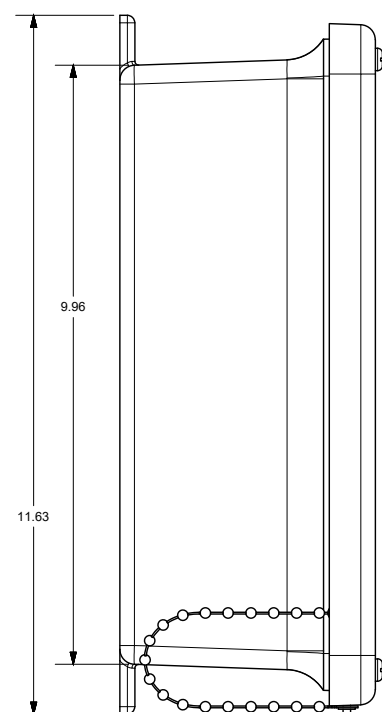
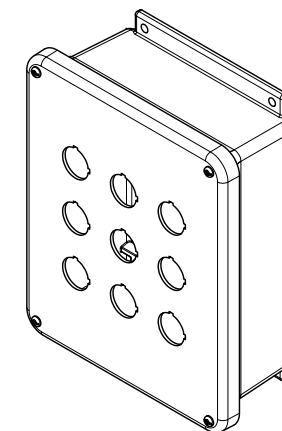
DETAIL C
(9X)



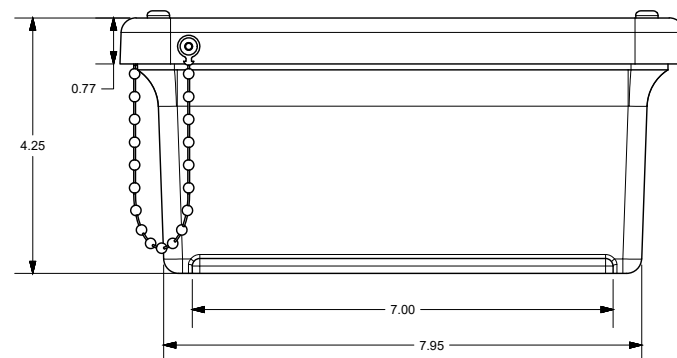
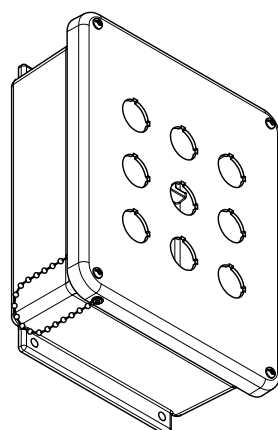
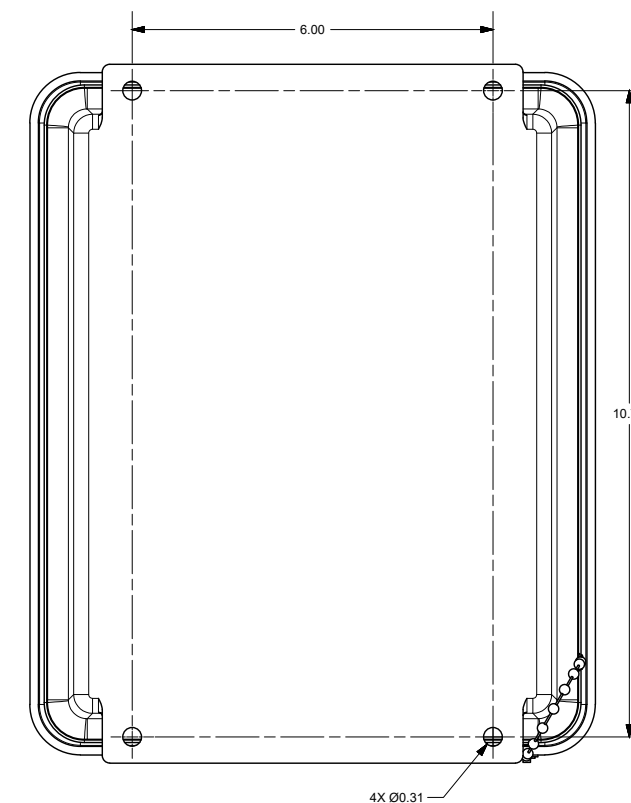
SECTION A-A



PRODUCT LABEL DETAIL
(BOX)




SECTION B-B



END USER NOTES:
1. TORQUE COVER SCREWS TO 20-24 IN.-LBS. TO MAINTAIN RATINGS

THIS DRAWING IS THE SOLE AND EXCLUSIVE
PROPERTY OF ROBROY ENCLOSURES.
NO PART OF THIS DRAWING MAY BE
REPRODUCED, DISTRIBUTED, OR PUBLICALLY
DISPLAYED IN ANY FORM OR BY ANY MEANS
WITHOUT THE EXPRESS WRITTEN
PERMISSION OF ROBROY ENCLOSURES.
ALL RIGHTS RESERVED
UNDER THE COPYRIGHT LAWS.
COPYRIGHT © 2017 ROBROY ENCLOSURES

SPECIAL REQUIREMENTS

NEMA 250: TYPE 1, 3R, 4X, 6P, 12 JEC 6052Z: IP66, IP67, IP68		STANDARD P/N: CO9PBW		ALL DIMENSIONS ARE IN INCHES UNLESS OTHERWISE SPECIFIED		TOLERANCES UNLESS SPECIFIED		.XX ± 0.03		.XXX ± 0.010	
COLOR: GLACIER GRAY (WPR3013) COLOR STANDARD: PANTONE 428 C		CUSTOMER DWG:									
MATERIAL: FIBERGLAS REINFORCED POLYESTER (FRP)				 <div style="float: right; text-align: right;"> Robroy Enclosures 500 Maple Street Belding, Michigan 48804 Phone: 616-794-0700 Fax: 616-749-3333 </div>							
REVISION HISTORY											
REV	DESCRIPTION	DATE	ENG								
-	-	-	-								
-	-	-	-								
-	-	-	-								
-	-	-	-								
-	-	-	-								
-	-	-	-								
-	-	-	-								
-	-	-	-								
				WWW.ATTABOX.COM DRAWN BY E91 DATE 05/18/17		CUSTOMER		DWG CO9PBW			
DO NOT SCALE				SCALE		DESCRIPTION STANDARD ENCLOSURE		PART NUMBER ATC09PBW			