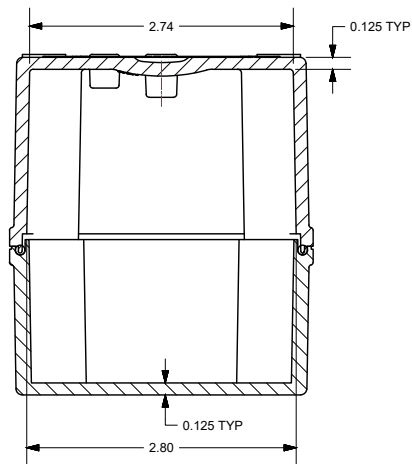
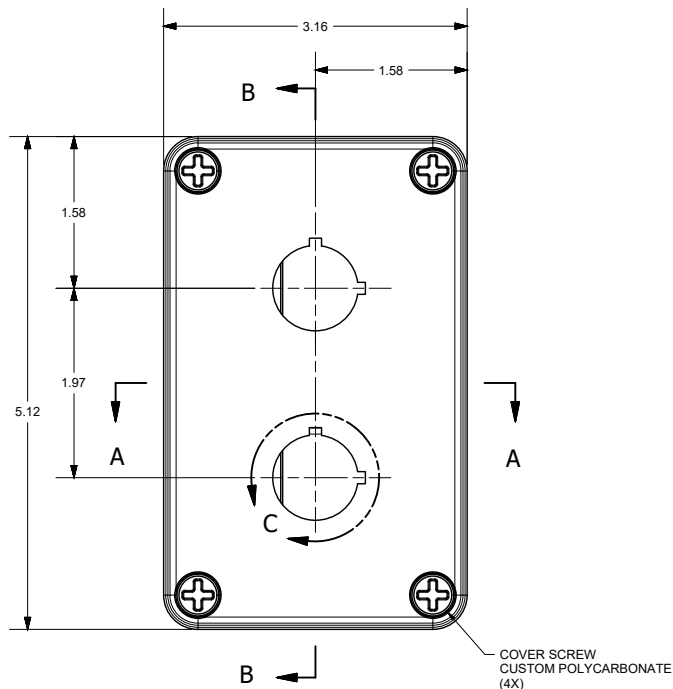
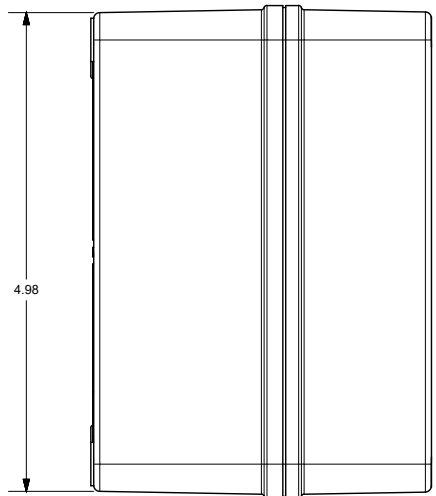
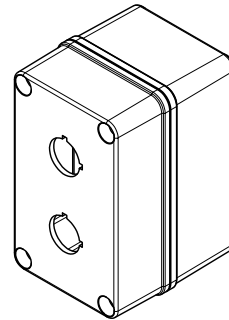


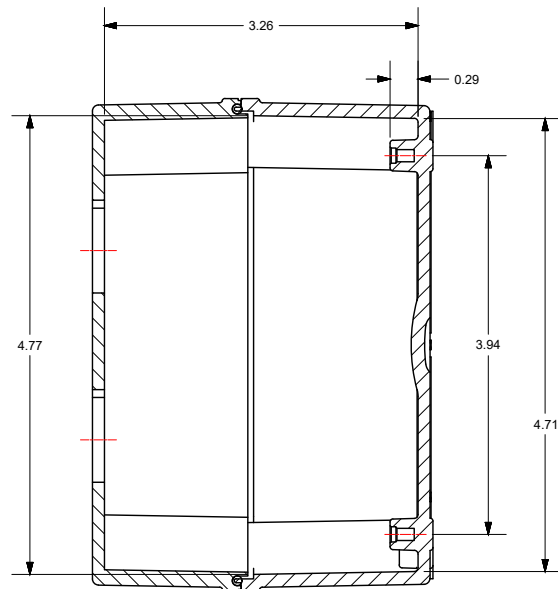
DETAIL C
(2X)



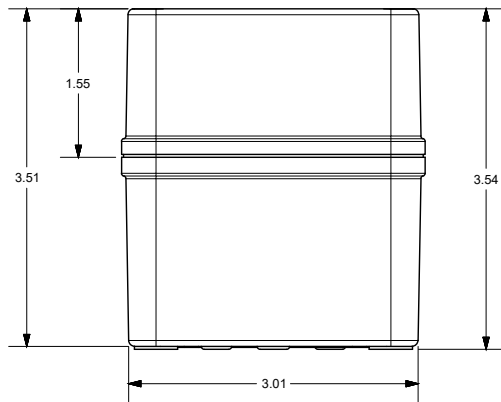
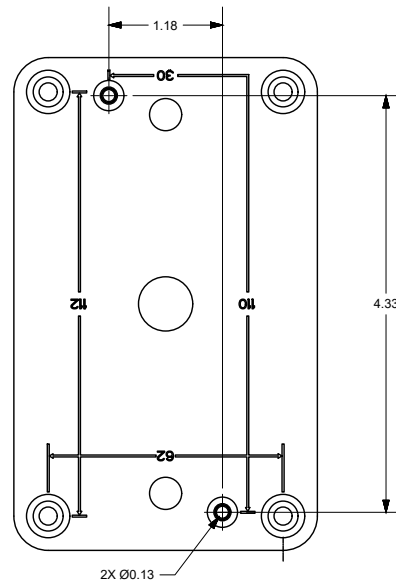
SECTION A-A



COVER SCREW
CUSTOM POLYCARBONATE
(4X)



SECTION B-B



END USER NOTES:
1. TORQUE COVER SCREWS TO 16 IN.-LBS. TO MAINTAIN RATINGS

THIS DRAWING IS THE SOLE AND EXCLUSIVE
PROPERTY OF ROBROY ENCLOSURES.
NO PART OF THIS DRAWING MAY BE
REPRODUCED, DISTRIBUTED, OR PUBLICALLY
DISPLAYED IN ANY FORM OR BY ANY MEANS
WITHOUT THE EXPRESS WRITTEN
PERMISSION OF ROBROY ENCLOSURES.
ALL RIGHTS RESERVED
UNDER THE COPYRIGHT LAWS.
COPYRIGHT © 2017 ROBROY ENCLOSURES

SPECIAL REQUIREMENTS

NEMA 250: TYPE 1, 3R, 4X, 6P, 12 IEC 60529: IP66, IP68		STANDARD P/N: COPC2PB22		ALL DIMENSIONS ARE IN INCHES UNLESS OTHERWISE SPECIFIED		TOLERANCES UNLESS SPECIFIED		.XX ± 0.03	XXX ± 0.010
COLOR: N/A COLOR STANDARD: PANTONE 7541 C		CUSTOMER DWG:		<div><div>AttaBox</div><div>Robroy Enclosures 500 Maple Street Belding, Michigan 48809 Phone: 616-794-0700 Fax: 616-749-3378</div></div>					
MATERIAL: POLYCARBONATE									
REVISION HISTORY									
REV	DESCRIPTION	DATE	ENG						
-	-	-	-						
-	-	-	-						
-	-	-	-						
-	-	-	-						
-	-	-	-						
-	-	-	-						
		DRAWN BY E91		DATE 05/19/17		CUSTOMER		DWG COPC2PB22	
		SCALE DO NOT SCALE		DESCRIPTION STANDARD ENCLOSURE		PART NUMBER ATCOPC2PB22			



Robroy Enclosures
500 Maple Street
Belding, Michigan 48809
Phone: 616-794-0700
Fax: 616-749-3378