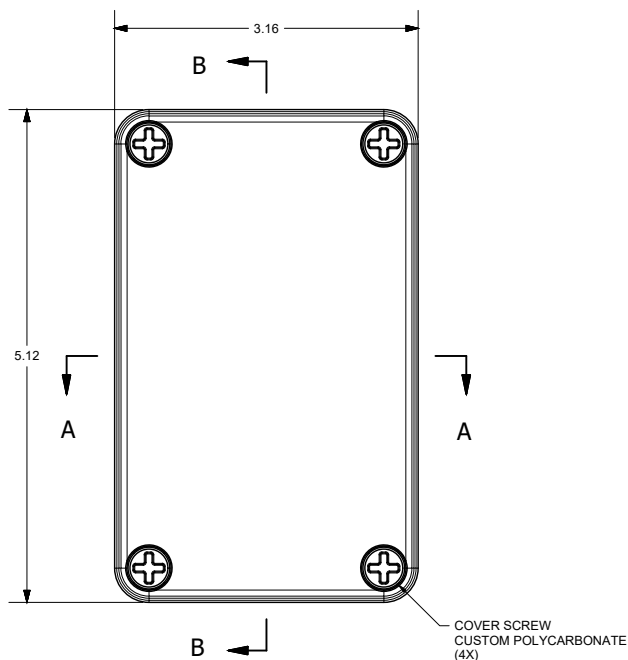
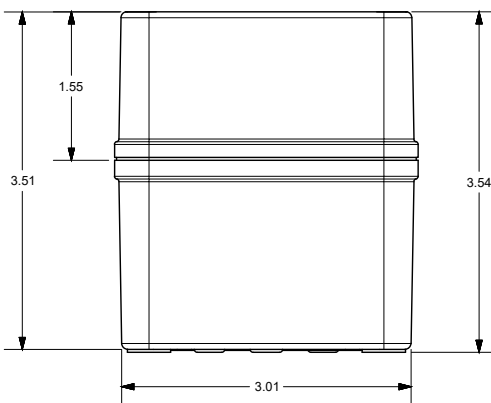
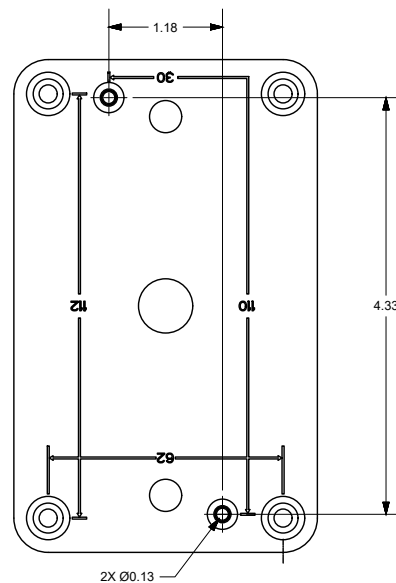


Technical drawing of a book, showing the spine and front cover. The height of the book is indicated as 4.98 units.




Technical drawing of a rectangular component, likely a battery cell, showing dimensions in inches. The overall width is 3.26, the overall height is 4.77, the thickness is 0.29, and the internal height is 3.94. The drawing includes a cross-section view on the right side, showing internal components and a hatched area indicating a specific material or structure.



END USER NOTES:
1. TORQUE COVER SCREWS TO 16 IN.-LBS. TO MAINTAIN RATINGS

THIS DRAWING IS THE SOLE AND EXCLUSIVE
PROPERTY OF ROBROY ENCLOSURES.
NO PART OF THIS DRAWING MAY BE
REPRODUCED, DISTRIBUTED, OR PUBLICALLY
DISPLAYED IN ANY FORM OR BY ANY MEANS
WITHOUT THE EXPRESS WRITTEN
PERMISSION OF ROBROY ENCLOSURES.
ALL RIGHTS RESERVED
UNDER THE COPYRIGHT LAWS.
COPYRIGHT © 2017 ROBROY ENCLOSURES

SPECIAL REQUIREMENTS

NEMA 250: TYPE 1, 3R, 4X, 6P, 12 IEC 60529: IP66, IP68 COLOR: N/A COLOR STANDARD: PANTONE 7541 C				STANDARD P/N: COPC533		ALL DIMENSIONS ARE IN INCHES UNLESS OTHERWISE SPECIFIED		TOLERANCES UNLESS SPECIFIED		.XX ± 0.03		.XXX ± 0.010	
MATERIAL: POLYCARBONATE						<div>Robroy Enclosures 500 Maple Street Belding, Michigan 48809 Phone: 616-794-0700 Fax: 616-749-3378</div>							
REVISION HISTORY													
REV	DESCRIPTION	DATE	ENG										
-	-	-	-										
-	-	-	-	DRAWN BY		DATE		CUSTOMER				DWG	
-	-	-	-	E91		05/18/17						COPC533	
-	-	-	-	SCALE		DESCRIPTION		PART NUMBER					
-	-	-	-	DO NOT SCALE		STANDARD ENCLOSURE		ATCOPC533					

AttaBox

Robroy Enclosures
500 Maple Street
Belding, Michigan 48809
Phone: 616-794-0700
Fax: 616-749-3378