

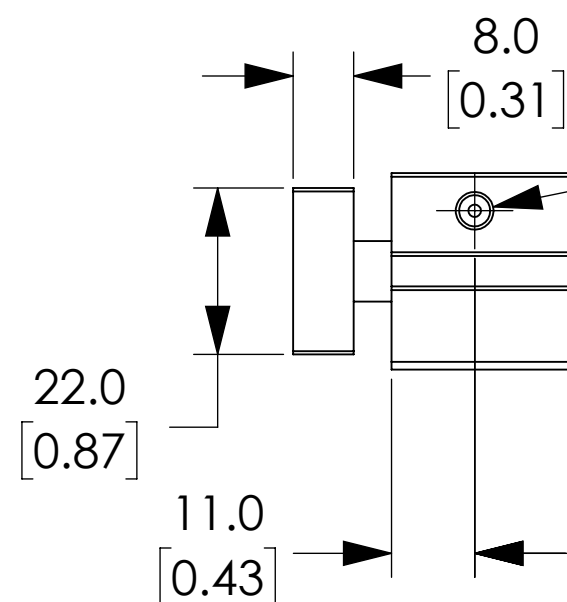
2X  $\phi$  3.0 [0.12] X 6.0 [0.24] DP  
 $\phi$  3.5 [0.14] X 3.0 [0.12] DP

4X M4X0.7 X 10.0 [0.39] DP

14.0 [0.55]

23.0 [0.91]

48.0 [1.89]

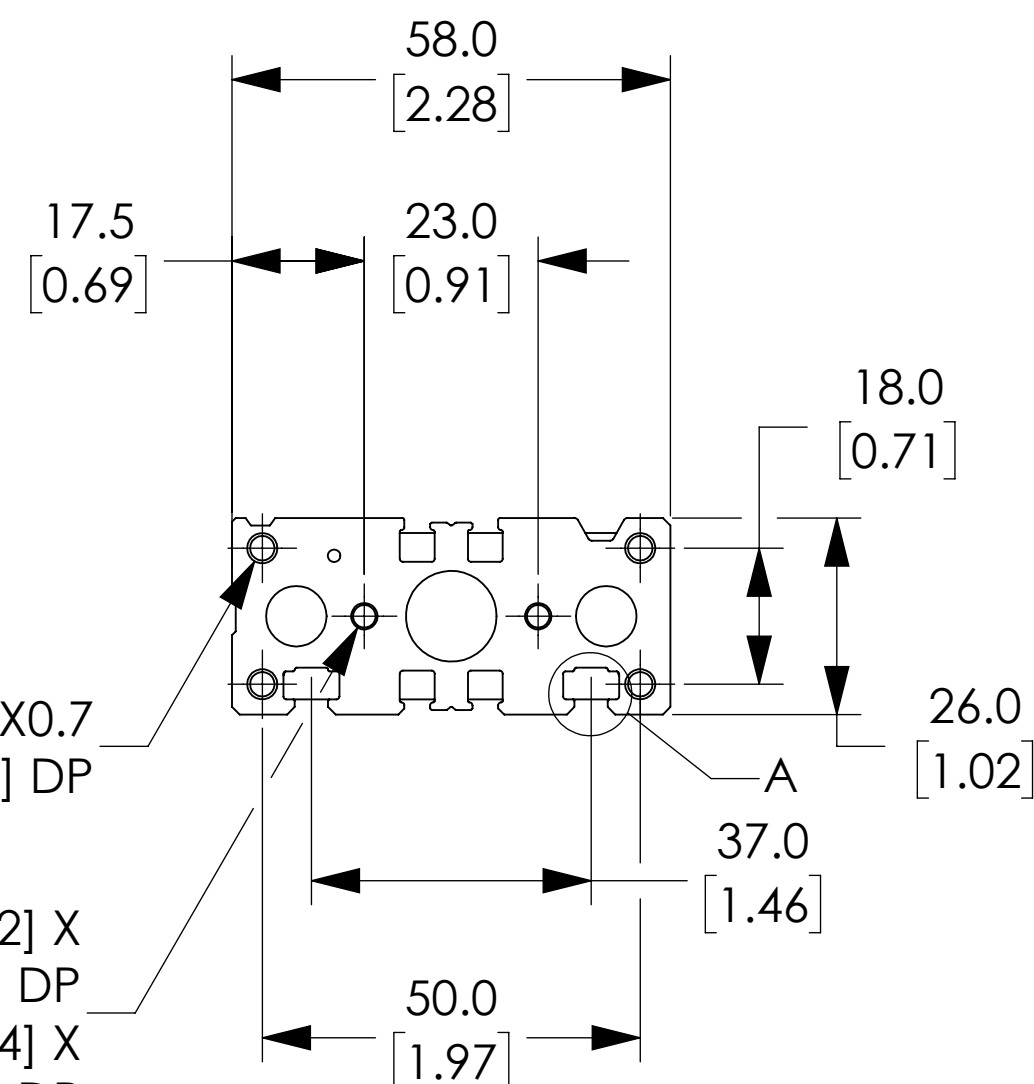


OPTIONAL AIR PORTS

5.0 [0.20]

4X M4X0.7 X 10.0 [0.39] DP

2X  $\phi$  3.0 [0.12] X 6.0 [0.24] DP  
 $\phi$  3.5 [0.14] X 3.0 [0.12] DP



4X M5X.08 X 10.0 [0.39] DP

2X  $\phi$  3.0 [0.12] X 6.0 [0.24] DP  
 $\phi$  3.5 [0.14] X 3.0 [0.12] DP

60.0 [2.36]

#### NOTES:

1. DIMENSIONS CAN BE CHANGED BY MANUFACTURER WITHOUT NOTICE.
2. DIMENSIONS DO NOT IMPLY TOLERANCE.

E12M125MD-M

Units: mm [inches]  
 Scale: Full

CYLINDER, DUAL ROD, 12mm BORE,  
 125mm STROKE, DOUBLE ACTING,  
 MAG PISTON