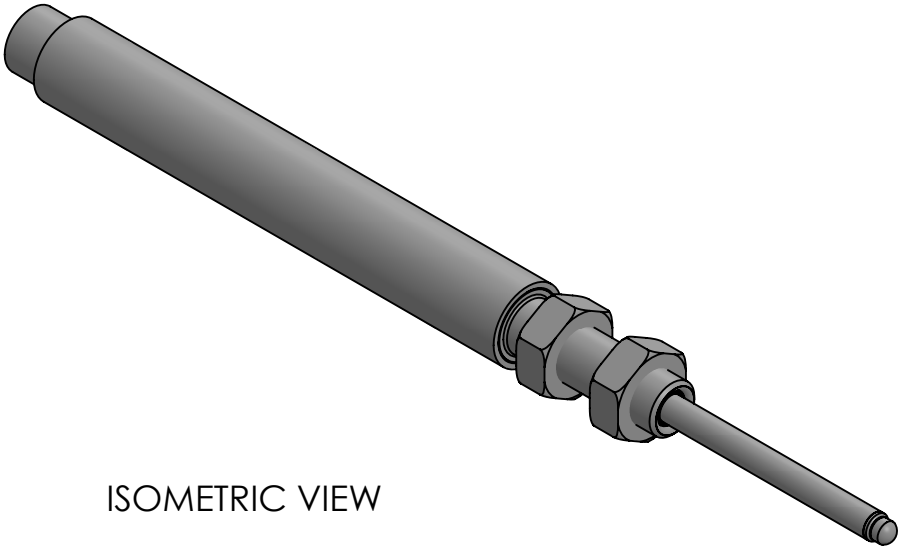
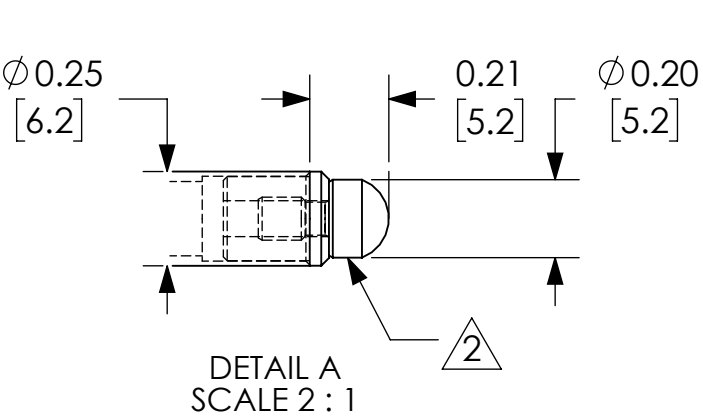
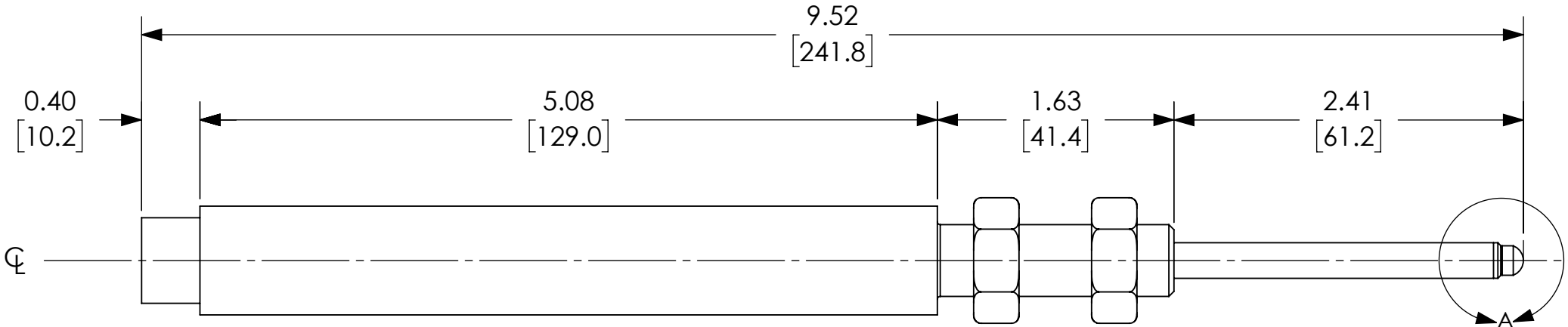


GENERAL NOTES:

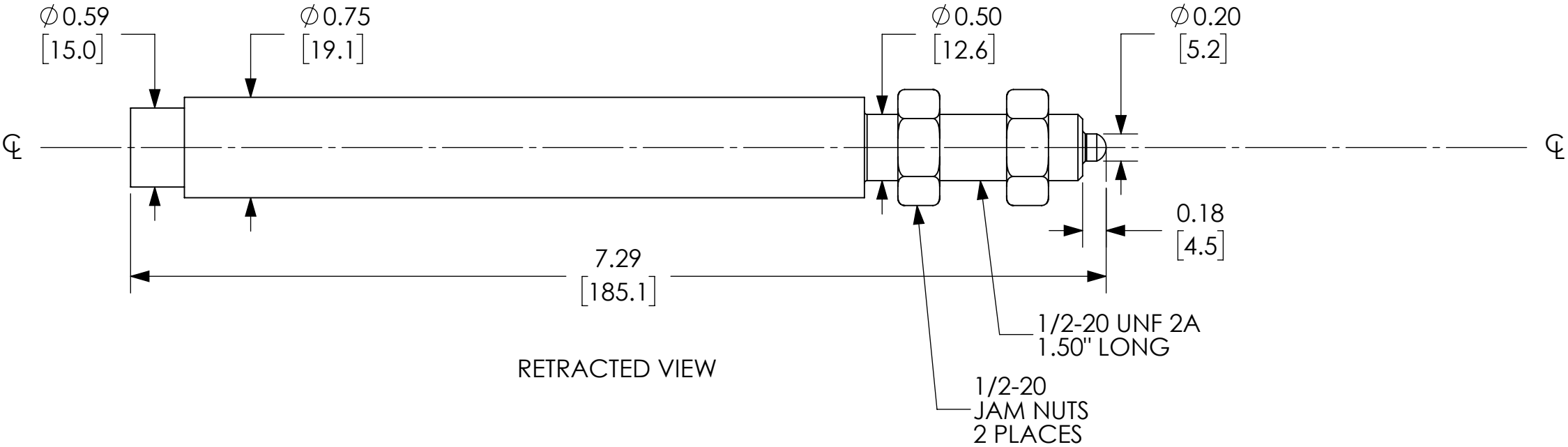
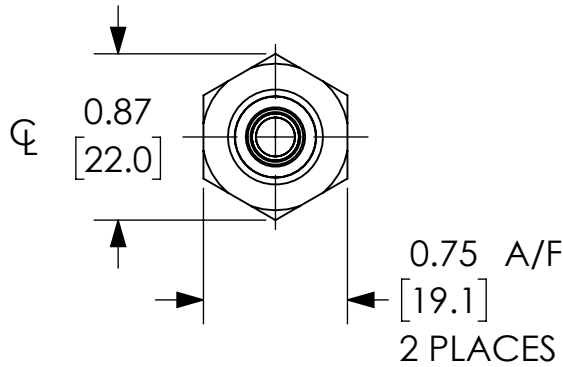
- 1. ANALOG OUTPUT IS MAXIMUM WITH PROBE RETRACTED; SEE TECHNICAL DATA SHEET TO SPECIFY REVERSED OUTPUT.
- 2. SENSOR SUPPLIED WITH AGD #9 CONTACT TIP. (4-48 UNF THD)
- 3. SPECIFICATIONS ARE SUBJECT TO CHANGE WITHOUT NOTICE.



ISOMETRIC VIEW



EXTENDED VIEW



RETRACTED VIEW

NOTES:

- 1. DIMENSIONS CAN BE CHANGED BY MANUFACTURER WITHOUT NOTICE.
- 2. DIMENSIONS DO NOT IMPLY TOLERANCE.

GHSI19-050A-02-20S

Units: inches [mm]

Scale: Full

LINEAR TRANSDUCER, 3/4" O.D. SS  
BODY, 2" RANGE, SPRING LOADED,  
AXIAL PTO CONNECTOR