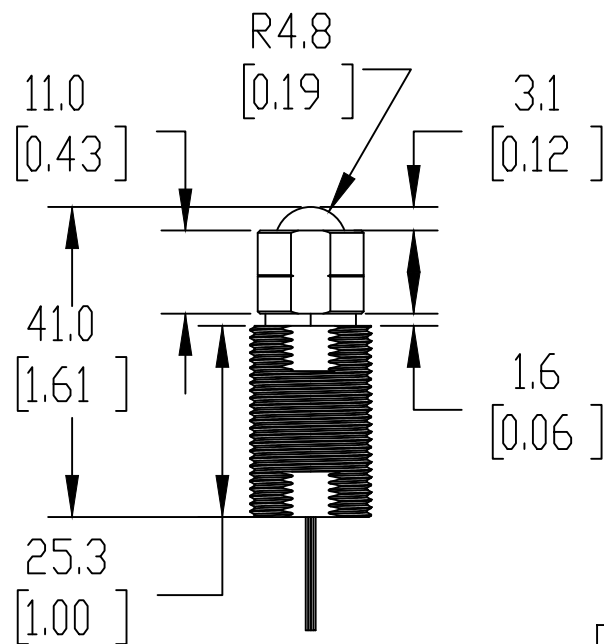


ISOMETRIC VIEW



NOTES:

1. DIMENSIONS CAN BE CHANGED BY MANUFACTURER WITHOUT NOTICE.
2. DIMENSIONS DO NOT IMPLY TOLERANCE.

GN-BP161B

Units: mm [inches]

Scale: Full

HIGH VACUUM RESISTANCE
ANGLED TOUCH PRECISION LIMIT
SWITCH, 2.9MM STROKE, N.C., M16
BODY, STRAIGHT CABLE

AUTOMATIONDIRECT.com