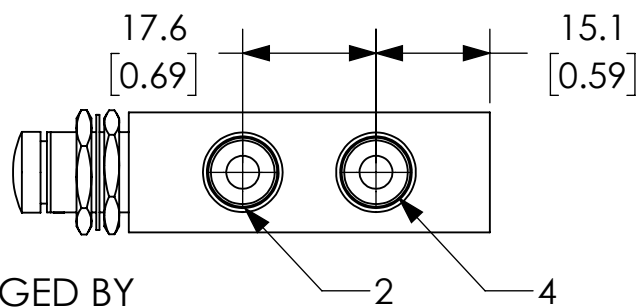
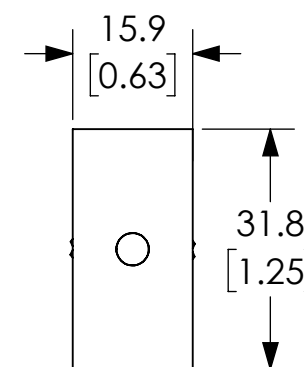
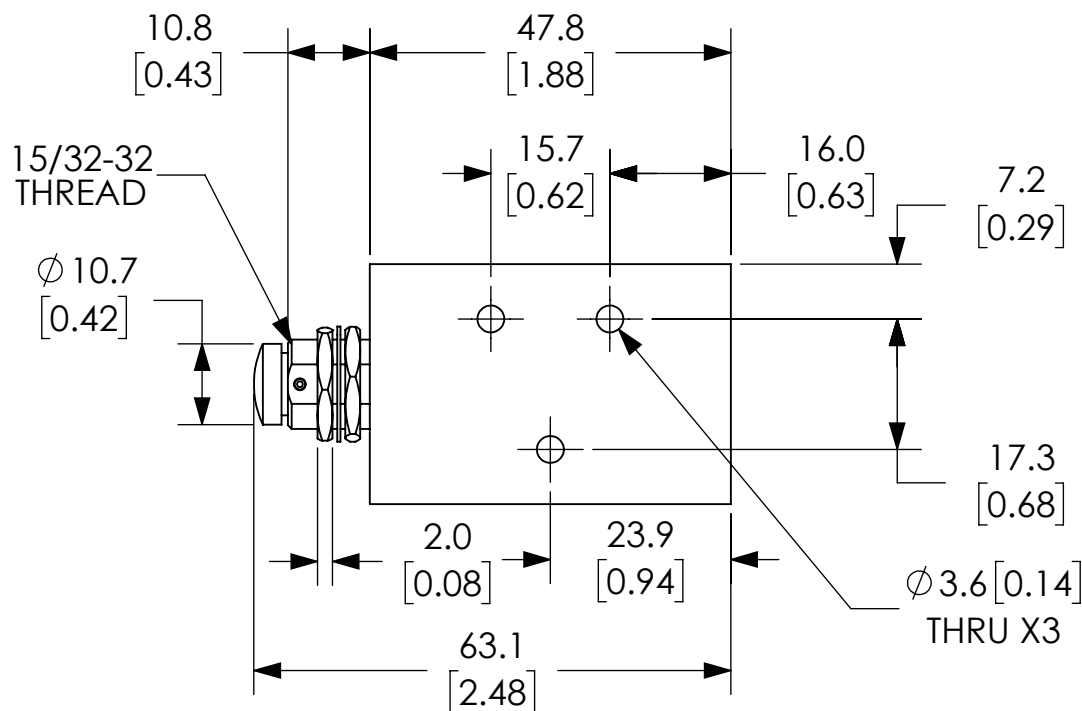
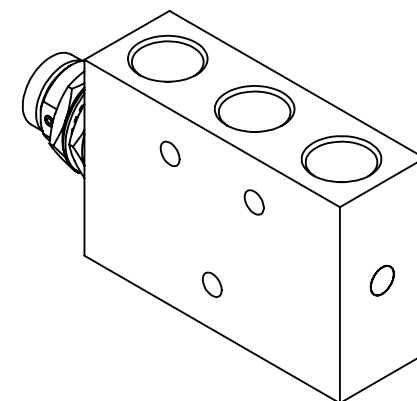
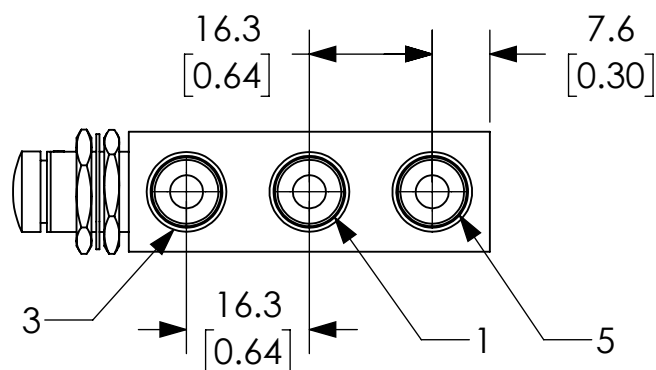


PORT LAYOUT			
PORT	1	2-4	3-5
SPECS	INPUT 1/8 NPT	OUTLET 1/8 NPT	EXHAUST 1/8 NPT



NOTES:

1. DIMENSIONS CAN BE CHANGED BY MANUFACTURER WITHOUT NOTICE.
2. DIMENSIONS DO NOT IMPLY TOLERANCE.

GVS-521F-PB

Units: mm [inches]
Scale: Full

PNEUMATIC MANUAL VALVE: 5-PORT, 4-WAY, 2 POSITION

AUTOMATIONDIRECT.com