

3 13/32

1 15/32

9 23/32

8 1/4

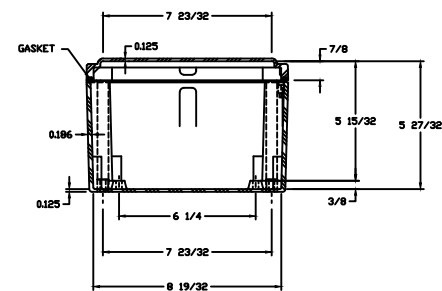
9 23/32

10 19/32

10-32 X 5/16 BP.
BRASS INSERT
(4 PLCS)

Technical drawing of a folder. The drawing shows a top-down view of a folder with a flap. The following dimensions and labels are present:

- S.S. HINGE PIN**: Label pointing to a small circle on the top edge of the flap.
- 6 3/32**: Dimension line indicating the total height of the folder.
- 5**: Dimension line indicating the height of the main body of the folder.
- 1 5/8" DRAFT**: Label indicating the thickness of the folder.



SECTION A-A

[illegible]