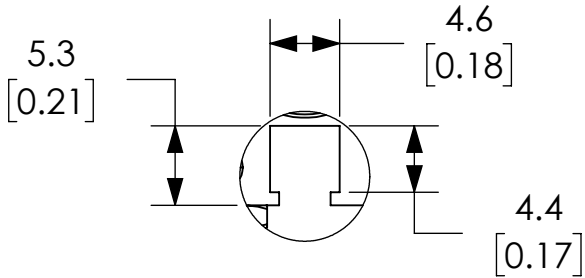
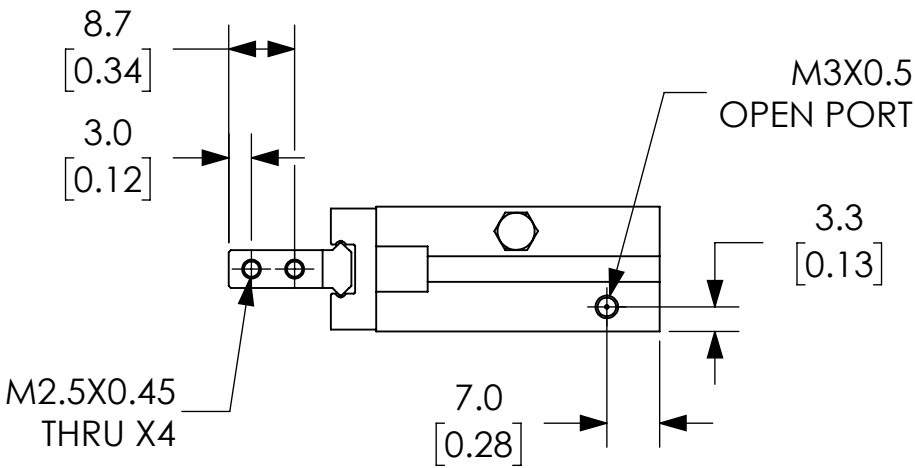
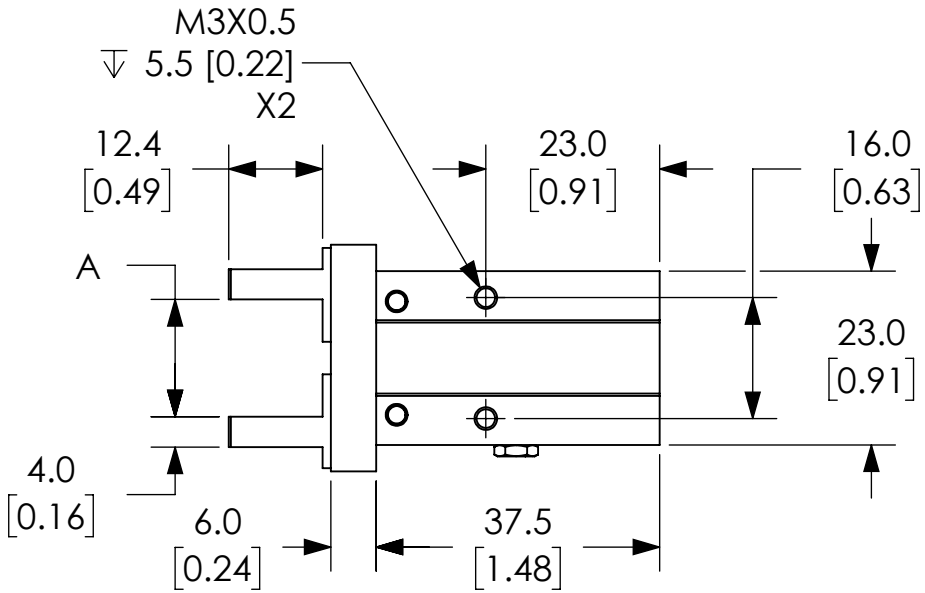
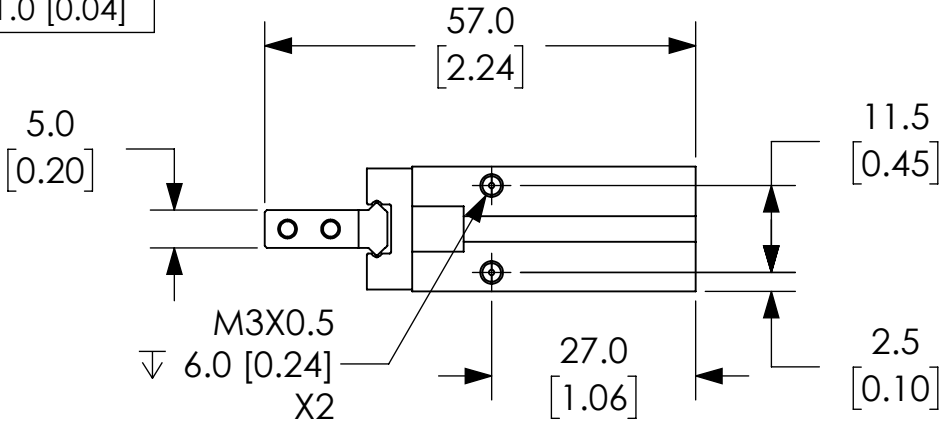
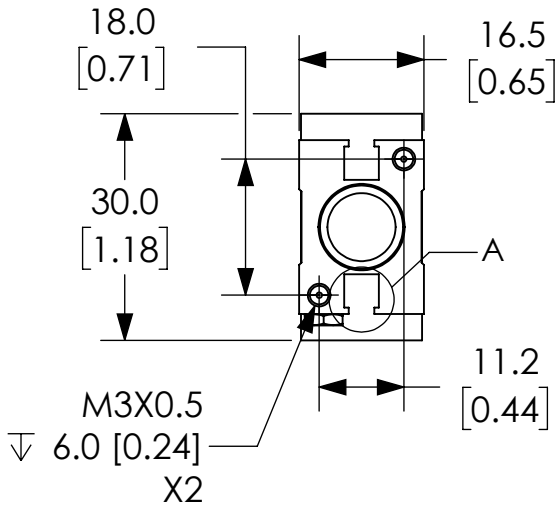


GRIPPER POSITION	DIMENSION A	TOLERANCE
OPEN	15.5 [0.61]	+2.0 [0.08] / -0.0
CLOSE	11.5 [0.45]	+0.0 / -1.0 [0.04]



DETAIL A
SCALE 2 : 1



NOTES:

1. DIMENSIONS CAN BE CHANGED BY MANUFACTURER WITHOUT NOTICE.
2. DIMENSIONS DO NOT IMPLY TOLERANCE.

KP10MSC-M

Units: mm [inches]
Scale: Full

GRIPPER, PARALLEL, 10MM, SINGLE
ACTING, N.C., STRAIGHT FINGER