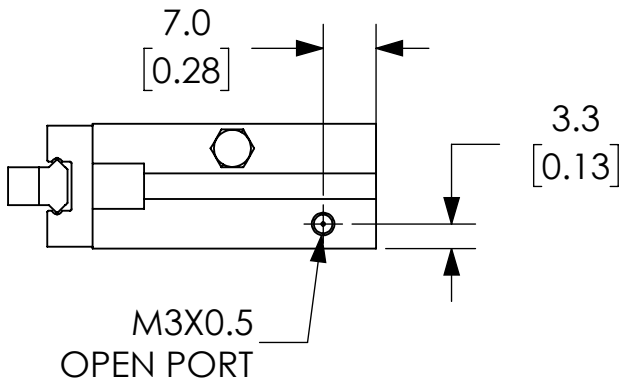
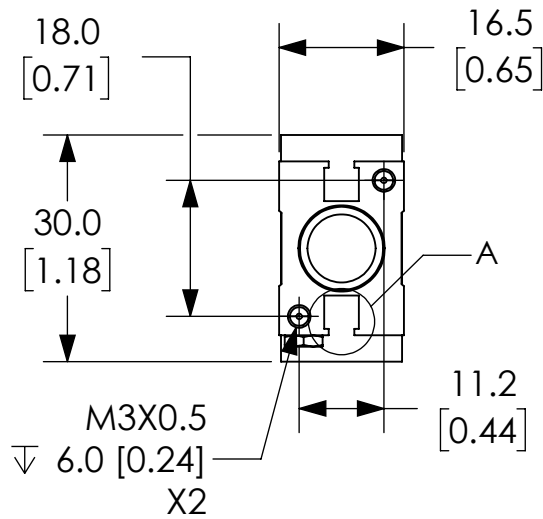
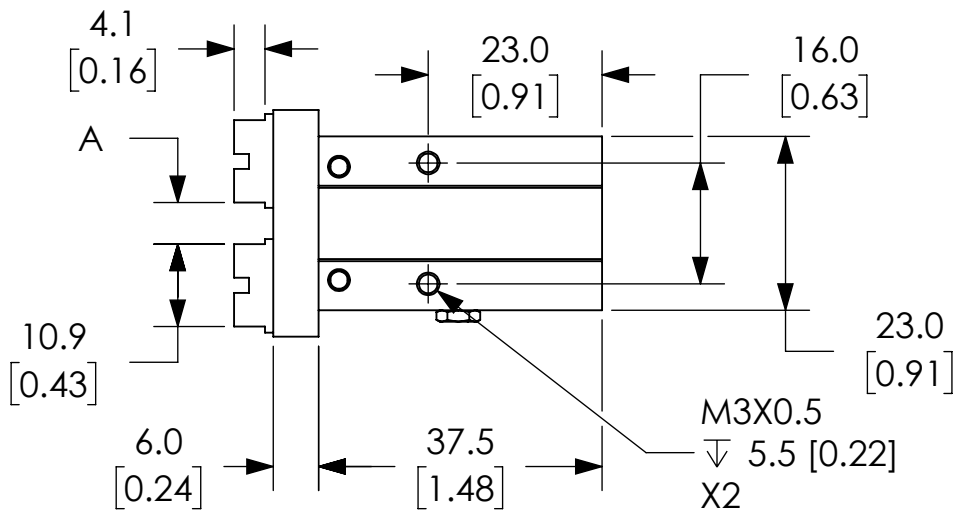
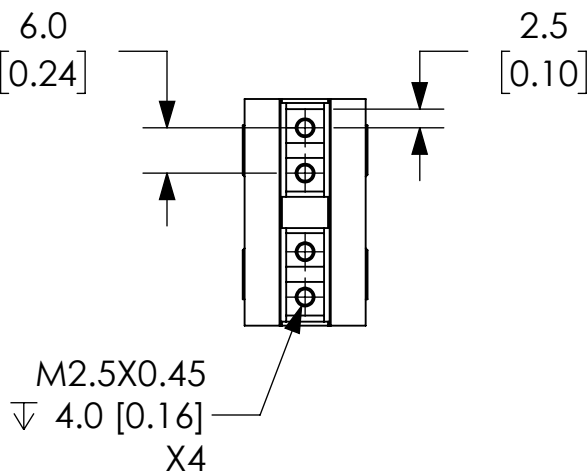
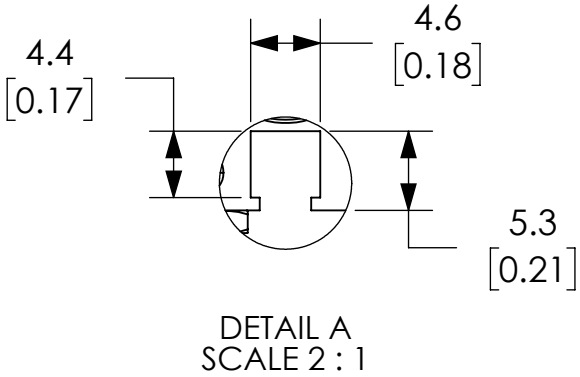
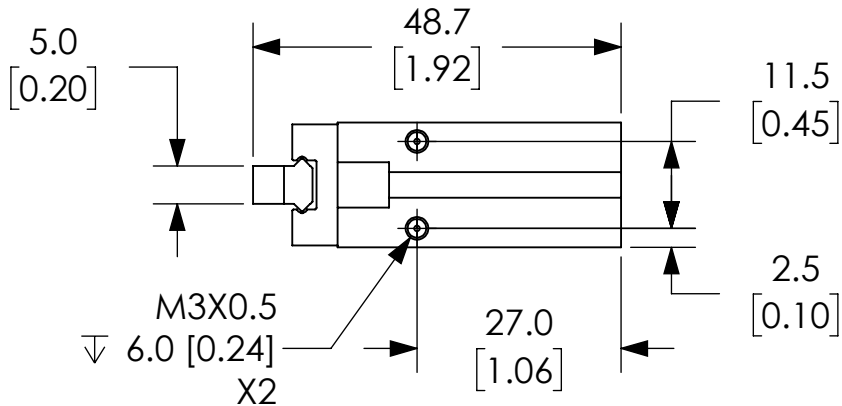


GRIPPER POSITION	DIMENSION A	TOLERANCE
OPEN	5.5 [0.22]	+2.0 [0.08] / -0.0
CLOSE	1.5 [0.06]	+0.0 / -.05 [0.02]



- NOTES:
1. DIMENSIONS CAN BE CHANGED BY MANUFACTURER WITHOUT NOTICE.
 2. DIMENSIONS DO NOT IMPLY TOLERANCE.

KP10MSC-MB

Units: mm [inches]

Scale: Full

GRIPPER, PARALLEL, 10MM, SINGLE ACTING, N.C., BOTTOM MOUNT FINGER

AUTOMATIONDIRECT.com