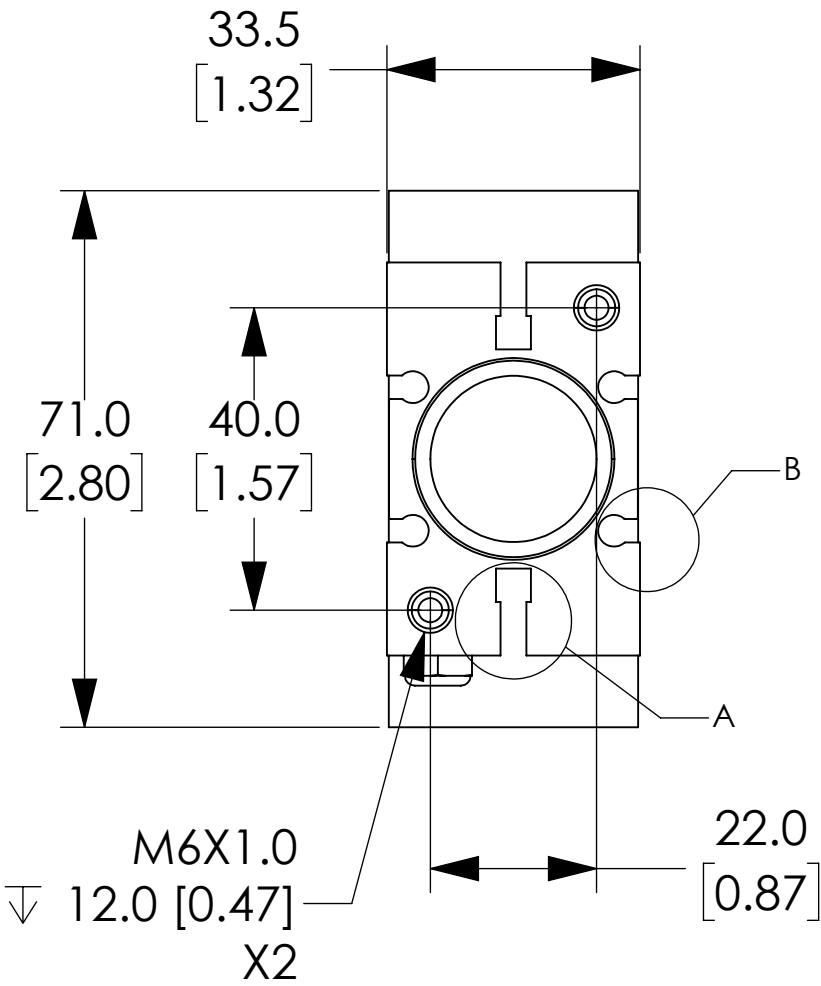
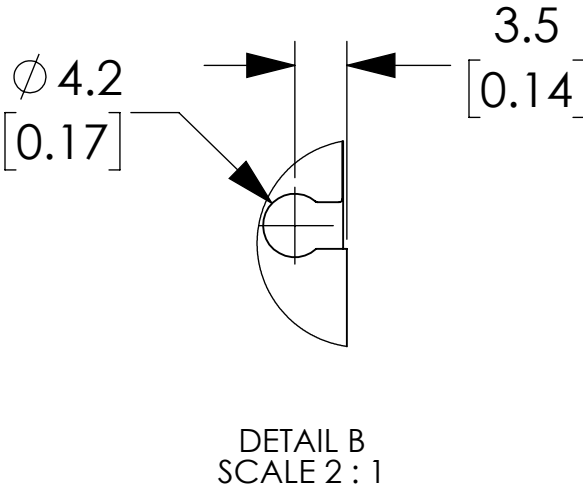
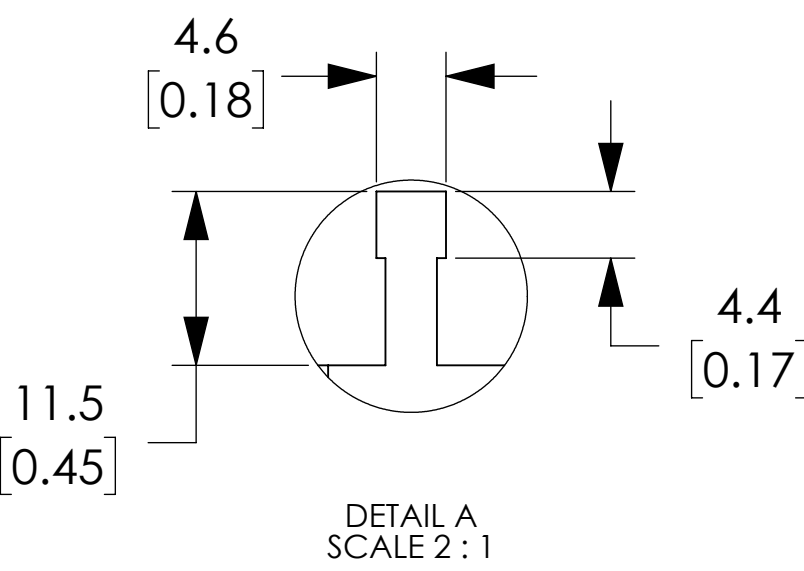
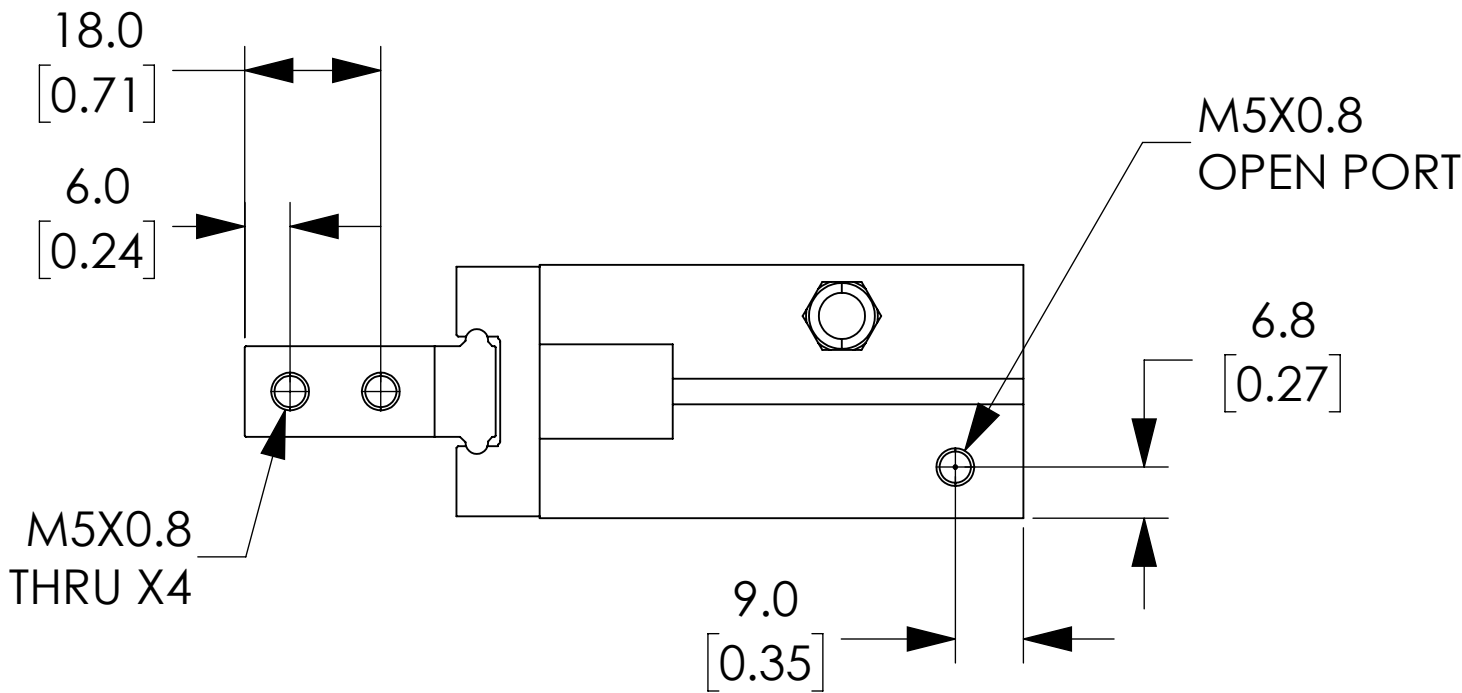
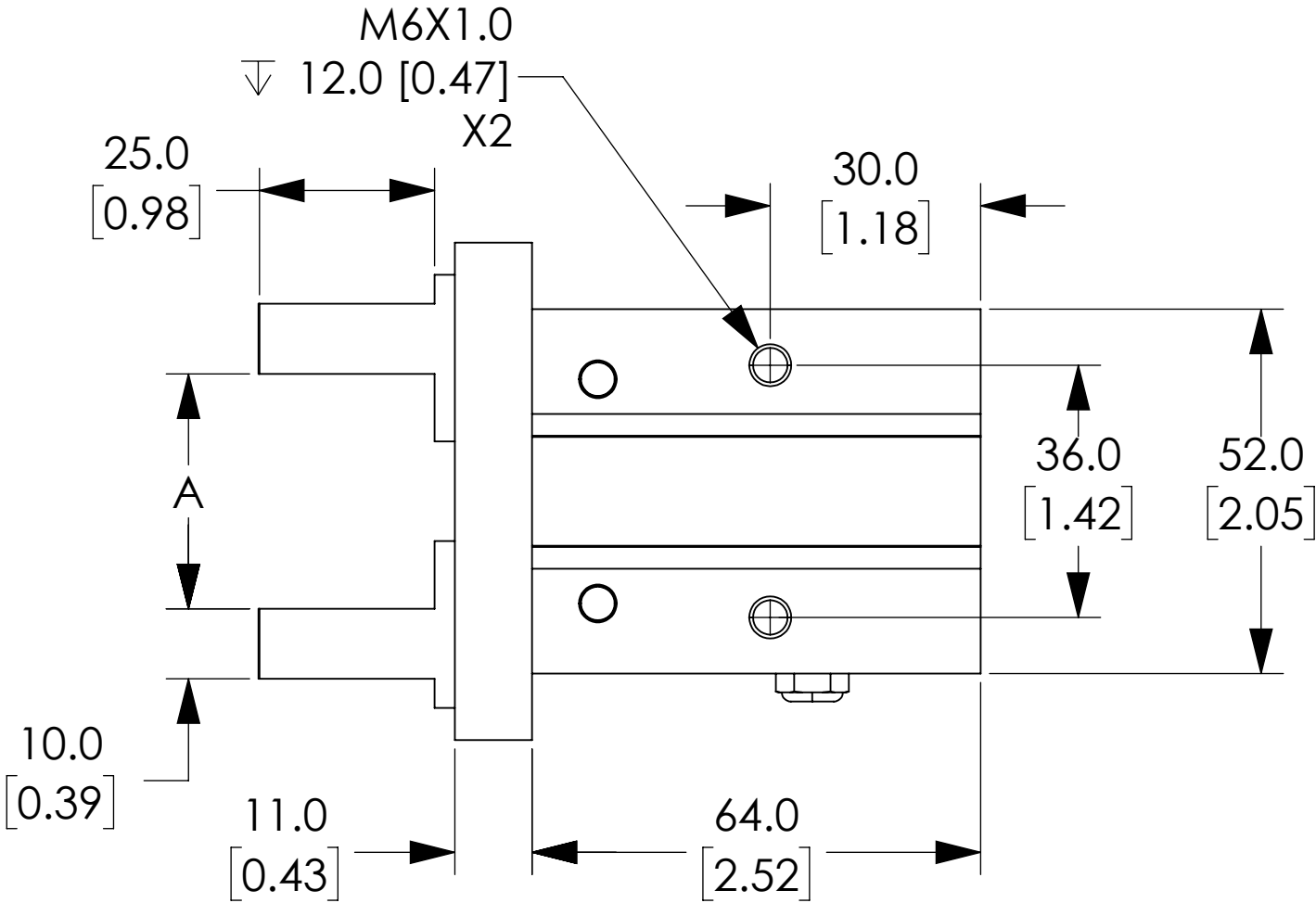
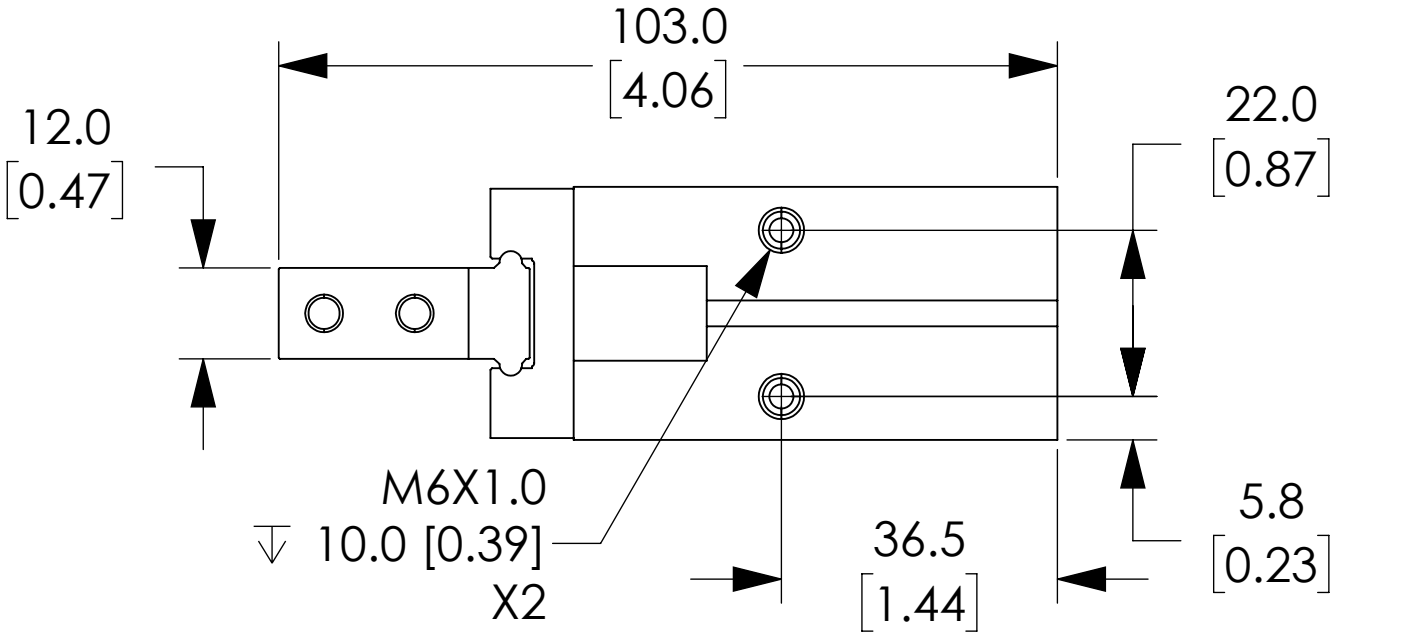


GRIPPER POSITION	DIMENSION A	TOLERANCE
OPEN	33.5 [1.32]	+2.0 [0.08] / -0.0
CLOSE	19.5 [0.77]	+0.0 / -1.0 [0.04]



KP25MSC-M

Units: mm [inches]
Scale: Full

GRIPPER, PARALLEL, 25MM, SINGLE
ACTING, N.C., STRAIGHT FINGER



- NOTES:
1. DIMENSIONS CAN BE CHANGED BY MANUFACTURER WITHOUT NOTICE.
 2. DIMENSIONS DO NOT IMPLY TOLERANCE.