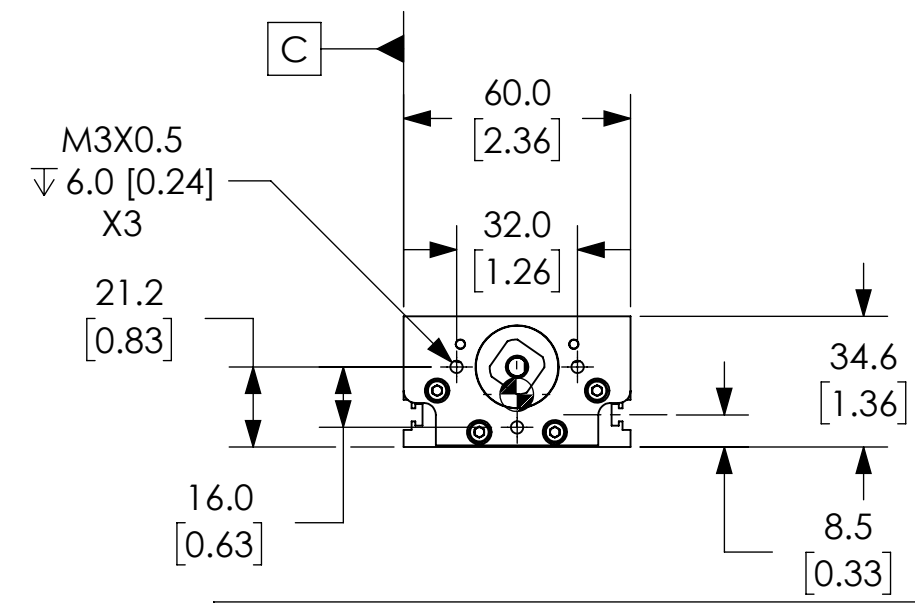


PART NUMBER	L	DATUM TO CENTER OF MASS DISTANCE		
		A	B	C
LAHP-33TM210XXXX	320.0 [12.6]	160.5 [6.32]	15.0 [0.59]	30.0 [1.18]
LAHP-33TM310XXXX	420.0 [16.54]	210.5 [8.29]	15.0 [0.59]	30.0 [1.18]
LAHP-33TM410XXXX	520.0 [20.47]	260.5 [10.26]	15.0 [0.59]	30.0 [1.18]
LAHP-33TM510XXXX	620.0 [24.41]	310.5 [12.22]	15.0 [0.59]	30.0 [1.18]
LAHP-33TM610XXXX	720.0 [28.35]	360.5 [14.19]	15.0 [0.59]	30.0 [1.18]
LAHP-33TM810XXXX	920.0 [36.22]	460.5 [18.13]	15.0 [0.59]	30.0 [1.18]
LAHP-33TM910XXXX	1,020.0 [40.16]	510.5 [20.1]	15.0 [0.59]	30.0 [1.18]

⊙ = CENTER OF MASS - CALCULATED WITH CARRIAGE IN THE CENTER OF TRAVEL (SYMBOL POSITION ON DRAWING IS REPRESENTATIVE AND NOT EXACT)



#### NOTES:

1. DIMENSIONS CAN BE CHANGED BY MANUFACTURER WITHOUT NOTICE.
2. DIMENSIONS DO NOT IMPLY TOLERANCE.

LAHP-33TMXXXXXXXXX

Units: mm [inches]  
Scale: Full

SUREMOTION LINEAR ACTUATOR:  
LAHP-33 SERIES

AUTOMATIONDIRECT.com