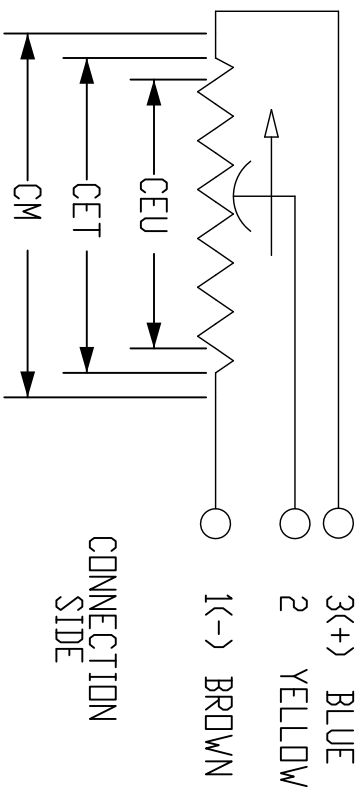
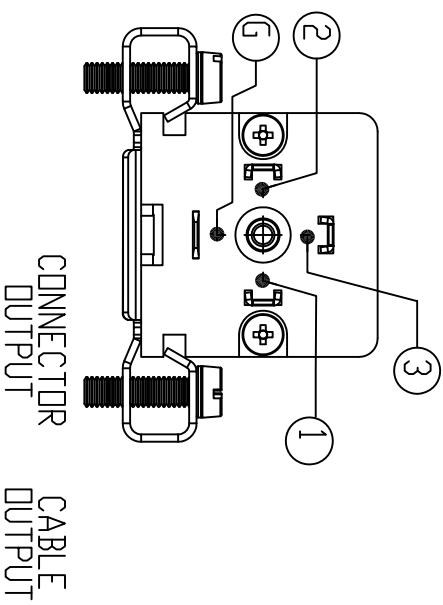
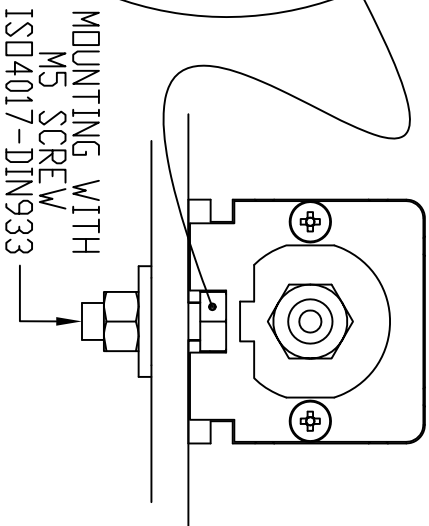
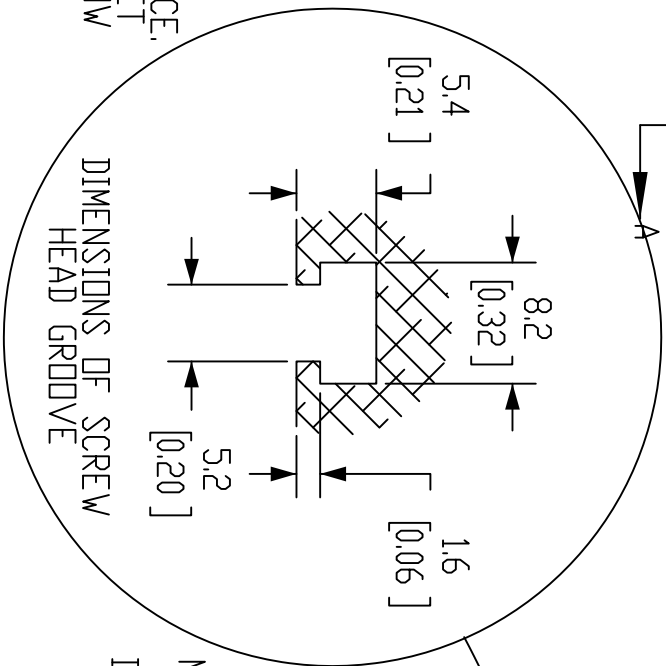
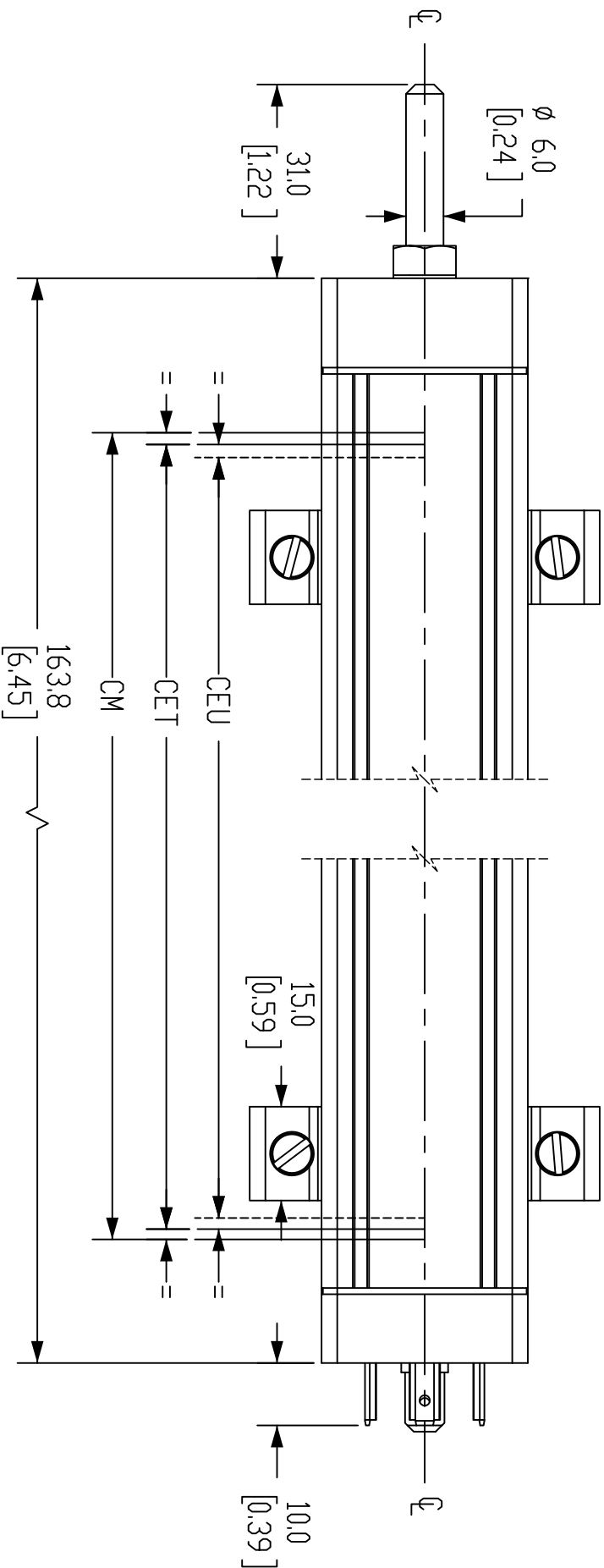
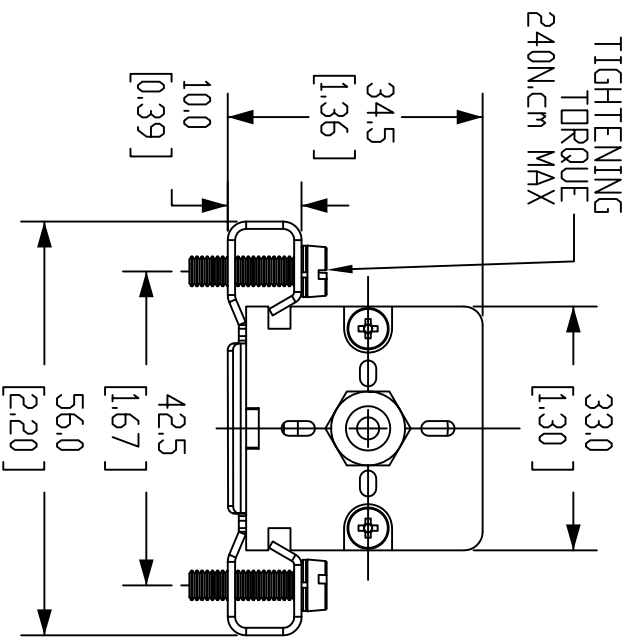


- NOTES:
1. DIMENSIONS CAN BE CHANGED BY MANUFACTURER WITHOUT NOTICE.
 2. DIMENSIONS DO NOT IMPLY TOLERANCE.

INSTALLATION INSTRUCTIONS :

MAKE THE SPECIFIED ELECTRICAL CONNECTIONS.
DO NOT USE THE TRANSDUCER AS A VARIABLE RESISTANCE.
WHEN CALIBRATING THE TRANSDUCER, BE CAREFUL TO SET
THE STROKE SO THAT THE OUTPUT DOES NOT DROP BELOW
1% OR RISE ABOVE 99% OF THE VOLTAGE LEVEL.



Units: mm [inches]

Scale: Full

POTENTIOMETER LINEAR POSITION
SENSOR, SLIDE, 100MM STROKE,
6MM SHAFT DIA., 163MM BODY,
CHANNEL MOUNT, 18MM